

35 TRUCKS & TRAILERS

Looking for a quality rebuilt Chevy V8 car or truck motor with warranty. For prices and delivery Call Tony At **717-762-7940**

FARM SHOW SPECIALS

8'6" Eby Brand New! Cattle Body
 (2) 22' Eby Cattle Body
 (1) Set-Up For Double Decking Hogs Or Calves
 24' Eby Cattle Body
 18' Omaha Grain Body Like New!

M.H. EBY, INC.
 P.O. Box 127
 Blue Ball, PA 17506
 (717) 354-4971

(2) Cab & Chassis Diesel, 5 Speed Trucks

(6) 4WD, Diesel Pickups, In Stock Ready For Delivery

'87 D350 Dump Truck, V8, 4-Spd. Low Miles

SEE OR CALL **UNCLE MILTIE** (Milton Hess) For All Your Truck Needs Serving The Area For Over 35 Years

E-TOWN DODGE
 717-367-6644
 717-653-6667
 Elizabethtown, PA

GOOD DEALS FROM OUR HOSE

WEATHERHEAD
 1 & 2 wire (1/4"-1 1/4")
 4 spiral (3/4"-1 1/4")
 Suction (1 1/4"-2")
 6 a.m. - 6 p.m.
 After hours same #

JIC O-Ring
 Pipe for-seal
 Split flanges
 Swivels
 Adapters

REELS WHILE YOU WAIT

MEMBER **ESA**

BEARTOWN HYDRAULICS
 Jacks, Cylinders and Pumps
 Rt. 322 2 mi. W. of Honey Brook
 (717) 354-5649 FAX (717) 355-0033

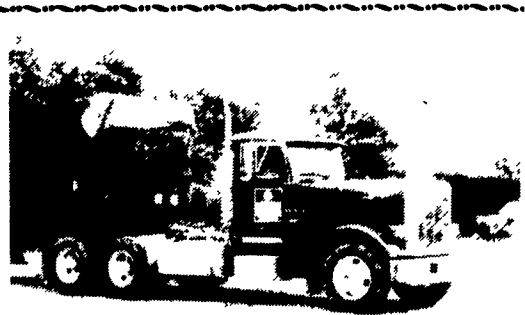


1988 CHEV K-30 10' DUMP
 454 V8 Gas Engine, 4 Spd. Trans., PS, PB, AC, AM-FM Stereo, 4 Wheel Drive, Only 19,000 Miles, 11,000 GVW
\$13,900 Like New
717-859-3168

- 1989 Chevy Camaro IROC-Z, 350 T.P.I., AT, Loaded, T-top, 12,000 mi. **\$12,600**
- 1988 Peugeot 505 Turbo S, 4 cyl., 5 spd., loaded, sunroof, 21,000 mi. **\$10,800**
- 1988 Chevy Celebrity CL, 4 dr., V6 AT, AC, AM-FM, 51,000 mi. **\$6,800**
- 1987 Toyota Camry 4 Dr., 4 cyl. 5 spd., AC, tilt, AM-FM cass., 46,000 mi. **\$7,800**
- 1987 Pontiac Bonneville, 4 dr., V6, AT, AC, CR, tilt, AM-FM cass., 61,000 mi. **\$6,900**
- 1986 Toyota ext. cab, 4x4, PU, 4 cyl. 5 spd., PW, PDL, CR, tilt, AM-FM 59,000 mi. **\$5,900**
- 1986 Pontiac Fiero 4 cyl., 5 spd., AC, tilt, AM-FM cass., 46,000 mi. **\$3,900**
- 1986 Dodge 150 4x4 PU, 318 V8, 4 spd., AC, AM-FM cass., 49,000 mi. **\$6,900**
- 1986 Chevy 10 Pickup, V6, AT, AC AM-FM, 65,000 mi. **\$5,900**
- 1985 Buick Park Avenue, 4 dr., V6, AT, loaded, leather int., 87,000 mi. **\$5,900**
- 1985 Toyota 4x4 PU, V8, 5 spd., AM-FM cass., 46,000 mi. **\$5,900**

Brubaker's Auto Sales
 Myerstown, PA
717-866-5237

Mr. Tarp
Covers For All Your Trailers
 Light weight nylon trash tarps, 19 oz. vinyl coated tarps.
Call 717/738-4671
 1676 W. Main St.
 Ephrata, PA 17522



1988 PETERBILT 379
 400 Cummins, RTO 13 Speed
 Wetline, Only 82,000 Miles
\$48,500 OBO
 In Excellent Shape



1982 DORSEY DUMP
 Steel Demo Trailer, 28' with 6' Sides
\$13,000 OBO



GIBSON DROP NECK TRAILER
 30 Ton - 40' Long
\$3000 OBO
 Days 609-234-7590
 Eves 609-234-3792

 1989 FORD XLT LARIAT F250 Super Cab, 7.3 Liter Diesel, 5 Spd., PS, PB, PW, PDL, Cruise, Tilt, Air, AM-FM Cassette Stereo, Dual Tanks, 8,900 GVW, Michelin Radials, 22,000 Miles, Excellent Condition, Not Actual Photo. \$13,900	 1989 FORD XLT LARIAT F250 , 4x4, 351 EFI, Auto., PS, PB, PW, PDL, Cruise, Tilt, Air, AM-FM Cass. St., Limited Slip Differential, 410 Ratio, 8,600 GVW, 19,000 MI., Blue & White, Like New. \$13,900	 1987 CHEVY HD 1/2 TON 4x4, 350 FI, Auto, PS, PB, AM-FM, Dual Tanks, Lock-Out Hubs, 8600 GVW, 36,000 MI., Ex. Cond. \$9,950
 1989 CHEVY 2500 HD 1/2 Ton, 4x4, 350 F.I., Auto, PS, PB, AM-FM Stereo, Limited Slip Rear, 8600 GVW, 9,000 Miles, With Bal. of Factory Warranty \$13,900	 1989 GMC SIERRA SLX 1500 Extended Cab, 305 EFI, Auto, PS, PB, Air, AM-FM Cass. St., 6200 GVW, 23,000 Miles, Blue & White, Ex. Cond. \$10,900	 1988 CHEVY CHEYENNE 1500 1/2 Ton, 4x4, 4.3 Vortec V6 HD, 4 Speed, PS, PB, Blue, 18,000 MI., Like New \$9,950

A & J AUTO SALES
 798 East Main Street - Rt. 322 East
 Ephrata, PA 17522
 Specializing In Late Model, Low Mileage Trucks
717-733-2873



USED TRUCK CLEARANCE!

All Units Must Go!



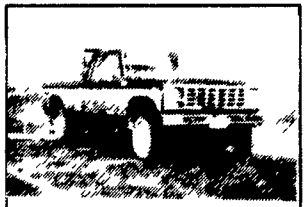
KEYSTONE FORD TRUCK SALES, INC.
 Interstate 83 at 322 E - PO Box 4104 Penhar Road - Hanburg PA 17111

PAUL MYERS, SALES MGR. JON EBY, USED TRUCK MGR
 SALES REPS. BILL VOGEL, CHARLIE KRUGER, BRUCE BINGAMAN & ANDY CHIKOTAS

SALES 8-6 Monday-Friday
 Toll Free (800) 669-6235
 (717) 564-6661



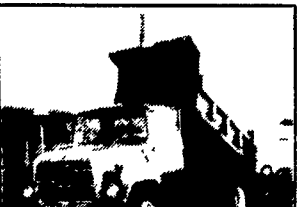
'77 CHEVY C-65 CAB/CHASSIS
 366 Gas, AT, 7,000 Front, 17,000 Rear, 203" Whlbs., 70% Tires, 24,000 GVW, Low Miles, PTO on Trans



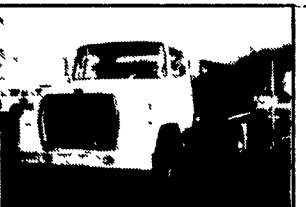
'80 FORD F-250 SUPERCAB 4x4
 Heavy Duty, 351 Eng., 4 Spd., Medh Sound, Current Insp., Body Is Rough



'85 GMC GENERAL
 300 Cummins, 8LL Trans., 58,400 GVW, 14 Ft Steel Heated Dump Body, Pentle Hook, Low Miles



'85 FORD LN700
 205 IIP Diesel, 5/2 Trans., 28,000 GVW, New 10 Ft. Dump Body



'84 FORD LN600 STAKEBODY
 170 HP Diesel, 5/2 Trans., 24,000 GVW, New 16 Ft. Stakebody, 40" Steel Bulkhead



'81 FORD LT-9000
 350 Cummins, 9 Spd., 12,000 Front, 40,000 Rear, Hendrickson Susp., Jake Brake, High Level Trim Pkg.



'85 WESTERN STAR DUMP
 44,000 Lb. Rear, 15 1/2 Ft. Steel Body, 270 Cummins, PS, 8LL Trans.



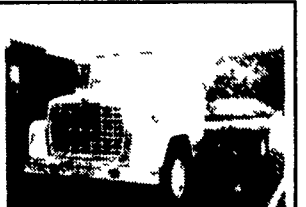
'84 FORD LN-9000
 NTC-240, 9 Speed, PS, 33,000 GVW



(2) '89 FORD LTA-9000
 Aeromax Tractors, Cummins, 315, 9 Speed, PS, AC, Air-Ride, Low Mileage



'86 MACK R686ST
 300 Eng., 7 Speed, PS, AC, Camelback Suspension, PA Inspected



'85 FORD LN700 CAB & CHASSIS
 205 HP Diesel, 5/2 Trans., 28,000 GVW



'85 FORD LN-700
 205 IIP Diesel, PS, 5/2 Trans., 20 Ft. Morgan Van Body, w/Barn Doors, 28,000 GVW