

1972 Int. COE, rebuilt engine and trans., \$2,000. (301)833-2311.

1974 Ford LN8000, 1160 Cat, 14' tandem dump truck, asking \$7,500 OBO. 609/697-1736.

1974 White Tandem tractor, 290 Cummins, 10-spd., RRTrans., Must sell. Excellent condition, \$4,000 301/592-5515

1975 90 Series Chevy 290, Cummins Aluminum body, \$7,500, 1962 Dodge ten wheeler, gas engine, \$2,500, 1962 International ten wheeler, gas engine, \$2,000, 1962 single axle Chevy, gas engine, rough, \$500, (2) fifth wheel low-boys, \$400 each. Chester County 215/932-5209.

1978 Ford LN8000, 3208 Cat, 5+2, 18' Eby aluminum stake body dump, \$7,000 OBO. 215/286-9797.

1978 Int'l. Binder, 14' flatbed dump, 345-eng., 4-sp. trans., new brake drums All around excellent condition Must sell \$5,000 BO 301/592-5515.

1979 Chevy 3/4 ton utility truck, excellent condition. 717-225-5484

1979 Ford 800, 429 gas, 32,000 GVW, 5&2, power steering, air brakes; 1981 Ford 800, 429 gas, 32,000 GVW, 5&2, air brakes and power steering, 1980 Int 1854, 466 diesel, w/22' Morgan van body, 5&2, 27,000 GVW 301-877-9889

1979 Marmon COE BC3 Cummins, 13 speed, Budd wheels, 4 11 ratio, Reyco Suspension, Good Condition 717-354-5049, 1-800-247-5665

1979 Peterbilt 359 conventional with bunk, Silver 92, 445HP, Detroit diesel, RTO 12515 trans., 4 11 SQHD rears, 11x24 5 tires, Peterbilt 4 spring suspension, working everyday 614/383-4932

35 TRUCKS & TRAILERS

FOR SALE



1984 KENWORTH
245" W/Base, NTC400, RTO 14613, Jake Brake, Air Ride, Eaton @ 3.90, 10 Alum. Wheels, 11x24.5 Rubber



TWO 1987 KENWORTH W900
Non-Sleepers, NTC 400, RTO 14613, Jake Brakes, Wheelbase 215", Eaton @ 3.90, 10 Alum. Wheels, 11x24.5 Rubber, 30 CFM Air Compressors, Low Mileage

MOTOR TRUCK - LANCASTER

1670 Rohrerstown Rd.
P.O. Box 4428
Lancaster, PA 17604

Phillip Higgins
Sales Representative
Office (717) 569-8500
Home (717) 656-9943

1-800-732-0345 In State



Lancaster Farming, Saturday, January 5, 1991-B37



75 Chevy, 4 Ton High Lift Coal Truck,
4 Speed Trans., 2 Speed Axle,
Stainless Steel Telescoping Chutes,
Extra Chutes, Good Rubber, Jumper
Blocks, Excellent Condition
\$8200 OBO
717-342-0533 After 5 PM



1980 Chevy Service Truck
With Dual Wheels, Good Cond.
\$3,200
717-438-3354



1985 GMC TOPKICK 7000
30,000 GVW, 3208 Cat 210 HP
5+2 22' Stake Body,
Good Rubber
\$12,500
Ph. (717) 568-1421



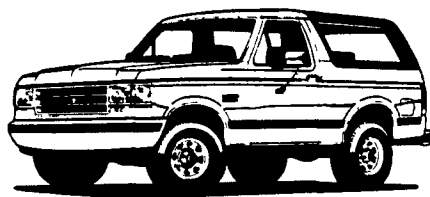
COME SEE THE DIFFERENCE!



✓ All Vehicles Come With Customer Satisfaction As Standard Equipment

✓ Lifetime Lube — Oil Change with Every New & Used Vehicle.

✓ Complimentary Full Tank of Gas With Every New Vehicle



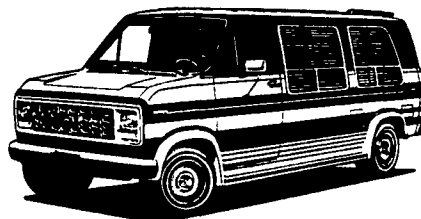
NEW BRONCO XLT 4x4's FULLY EQUIPPED

- 5.0L V8
- Automatic
- Air Cond.
- Cap't Chairs
- Power Windows
- Power Locks
- Tilt Wheel
- Cruise Control
- Much More

CHOOSE FROM 5 AT \$500 UNDER INVOICE

NEW LUXURY CONVERSION VANS LOW TOP AND RAISED ROOFS

- 5.0L V8
- Automatic
- Tilt Wheel
- Cruise Control
- Stereo Cassette
- Power Windows
- Quad Seats
- Luxury Trim
- Much More



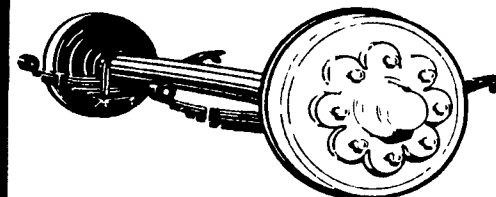
CLEARANCE PRICED FOR IMMEDIATE DELIVERY

HALDEMAN FORD IS YOUR COMPLETE TRUCK HEADQUARTERS
• SUPER CABS • CREW CABS • SUPER DUTIES • CHASSIS CABS • DIESELS



MAIN STREET • KUTZTOWN, PA • (215) 683-3553
BUSINESS HOURS 8:30 AM- 9 PM (MON.-THURS.) 8:30 AM-6 PM (FRI.-SAT.)
CONVENIENTLY LOCATED BETWEEN READING AND ALLENTOWN

SEE US FOR YOUR AXLE REPLACEMENT PARTS AND COMPLETE AXLE ASSEMBLIES



2,000-22,500 Lb. Axles & Suspensions
Metal Trailer Components
Lights & Electrical Supplies
Brakes, Tires & Wheels
Jacks, Couplers & Hitches
Hardwood Accessories & Much More

Check Our Prices On Receiver Hitches!

Buy Where The Quality Is #1 At The Right Price -

Ask For Dean At:



133 Rothsville Station Rd • Lititz, PA 17543
Phone 626-4705