

Belknap Livestock Auction

Dayton, Pa.
Wednesday, January 2, 1991
Report Supplied by PDA
CATTLE 56...PDA...Compared with last weeks market: Few Standard slaughter steers 62.00-68.00 Few Breaking Utility and Commercial sl. cows 49.00-51.50, Cutter and Boning Utility 46.00-50.25, Canner and low Cutter 37.75-45.00, Shells down to 35.00. Individual Yield Grade No. 2, 1540 lbs. sl. bulls 55.25. FEEDER CATTLE: Few Medium & Large Frame No. 1, 390/450 lbs. bulls 75.00-85.00, few Large No. 1, 745/860 lbs. 63.00-67.75.

CALVES 115.. Supply included 85% farm calves sold to return to farm..Standard and Good 60/110 lbs. vealers 45.00-55.00. Farm Calves: No 1, Holstein Bulls 90/130 lbs. 95.00-153.00, one 160.00, 80/85 lbs. 80.00-100.00, No. 2, 90/120 lbs. 55.00-96.00; few No. 1, Hol Heifers 95/130 lbs. 100.00-147.50, 75/90 lbs. 60.00-95.00. Beef cross 65/110 lbs. bulls & heifers 67.00-115.00, one 142.50.

HOGS 179...Barrows and gilts: Couple Lots US No. 1-2 250 lbs. 48.00, 1-3 230/275 lbs. 47.00-47.90, 2-3 230/270 lbs. 45.40-47.00, small lot 1-3 210 lbs. 43.25. Sows US No. 1-3 425/665 lbs. sows 38.25-40.00, one 44.0, one 2-3 340 lbs. 36.25 Few Boars 30.00-33.00.

FEEDER PIGS 30..US No. 1-3 35/50 lbs. feeder pigs 35.00-46.00 - all per head.

SHEEP 9.. Few Choice 50/95 lbs. wool slaughter lambs 45.00-51.00. Few Slaughter sheep 5.00-14.50 - all Cwt

GOATS 2 One Large Billy 71.00, one Large Nanny 40.00 - all per head

New Wilmington Livestock Auction

N. Wilmington, Pa.
Monday, December 31, 1990
Report Supplied by PDA

CATTLE 218 ..PDA. Few Select Holstein steers 66.75-68.00, few Standard 68.00-71.50. Select sl. heifers 68.00-72.00, few Standard 60.00-62.00 Breaking Utility & Commercial sl cows 49.50-53.50, one 55.00, Cutter & Boning Utility 46.00-51.00, Canner & Low Cutter 38.50-46.50, Shells down to 20.00 Few Yield Grade No 1, 1325/1950 lbs. sl bulls

60.00-64.50. Feeder Cattle: Few Medium & Large Frame No. 1, 300/550 lbs. steers 73.00-80.00, few 89.00-96.00, few Medium No. 2, 300/500 lbs. 69.00-74.00. Medium & Large Frame No. 1, 300/485 lbs. heifers 66.00-74.00, few 79.00.

CALVES 242...Standard & Good 90/120 lbs. vealers 46.00-53.00, 60/85 lbs. 30.00-47.00, lot Utility 55 lbs. 20.00. Farm Calves: Hol. Bulls No. 1, 85/140 lbs. 105.00-161.00, lot 80 lbs. 100.00, #2, 90/120 lbs. 61.00-100.00; No. 1, Hol. Heifers 90/125 lbs. 100.00-120.00, few No. 2, 75/100 lbs. 60.00-75.00. Beef cross 60/120 lbs. bulls & heifers 55.00-100.00, few 165.00.

HOGS 311...Barrows and gilts: US No. 1-2 220/250 lbs. 46.50-47.50, 1-3 225/265 lbs. 45.00-46.50, 2-3 240/275 lbs. 44.00-45.25, lot 305 lbs. 43.00. Sows: US No. 1-3 280/585 lbs. sows 42.00-46.50, few 49.00. Couple Boars 32.00&34.50.

FEEDER PIGS 44. US No. 1-3 35/50 lbs. feeder pigs 30.00-47.00 --- all per head.

SHEEP 72...High Choice and Prime 70/90 lbs. wool slaughter lambs 60.00-68.00, Choice 60/85 lbs. 52.00-62.50, mixed Good and Choice 100/125 lbs. 30.00-40.00; few Good & Choice 55/70 lbs. feeder lambs 42.00-56.00 - all cwt. Slaughter sheep 14.00-30.00.

GOATS 5..Few Medium 30.00-40.00 --- all per head.

Leesport Livestock Auction

Leesport, Pa.
Wednesday, January 2, 1991
Report Supplied by PDA

CATTLE 275...PDA... Supply included 65 slaughter steers and 18 feeder cattle steady to weak. Choice 1165/1425 lbs. sl steers 79.00-83.85, few 74.85, Select 70.00-77.25; Choice 1250/1600 lbs. Holsteins 69.00-75.25, Select 65.00-69.00, Standard 60.60-65.25. Few Choice sl. heifers 75.00-79.25, few Select 69.75-72.75, few Select & Choice Holsteins 63.00-64.75, few Standard 56.00-61.25. Breaking Ut. & Commercial sl. cows 51.75-55.25, few 59.50, one 65.00, low dressing 47.25-51.75, Cutter & Boning Utility 48.00-54.00, low dressing 42.50-47.50, Canner & low Cutter 46.25-49.25, Shells down to 34.50. Few Select and Choice Holstein bullocks

60.75-63.75, Standard 58.00-61.75. Few Yield Grade No. 1, 1460/1940 lbs. sl. bulls 60.00-70.25. Feeder Cattle: Few Large Frame No. 2, 700/980 lbs. steers 58.50-60.50. Few Large and Medium Frame No. 1, 450/700 lbs. steers and bulls 64.25-78.50.

CALVES 189 ..Few Choice vealers 101.00-120.00, few Standard & Good 65/105 lbs 42.00-45.50, few Utility 60/80 lbs. 36.00-42.00 Farm Calves: No 1, Holstein Bulls few 130/135 lbs. 102.50-120.00, 90/125 lbs 139.00-150.00, few 80/85 lbs 92.50-112.50, No. 2, 90/120 lbs. 85.00-140, few 60.00, 80/85 lbs 85.00-95, few 50.00, No 1, few 100/115 lbs. heifers 135.00-145.00, few No. 2, 80/110 lbs. 77.50-105.00. Beef cross 90/130 lbs. bulls & heifers 120.00-150.00.

HOGS 326...Barrows and gilts: weak to .75 lower. US No. 1-2 215/255 lbs. 45.75-46.00, lot 46.85, 1-3 225/255 lbs. 45.00-45.85, few lots 43.25, few 1-3 170/185 lbs. 36.00-36.75. SOWS: US No. 1-3 300/480 lbs. sows 39.75-42.00, few 45.50, 500/700 lbs 42.00-43.00, Medium 270/470 lbs. 35.50-40.00. Boars 36.00-37.25.

FEEDER PIGS 215...US No. 1-3 20/25 lbs. feeder pigs 135.00-155.00, 30/35 lbs. 100.00-110.00, 35/65 lbs. 85.00-90, few 75.00 --- all per hundredweight.

SHEEP 19...Few Choice 110/125 lbs. wool slaughter lambs 53.00-58.00, couple 50/65 lbs. 69.00&70.00, lot Choice 137 lbs. 46.00. Few Slaughter sheep 21.00-28.00.

GOATS 3...Few Large 40.00-90.00 --- all per head.

Four States Livestock

Hagerstown, Md.
Wednesday, Jan. 2, 1991
Report supplied by Auction
SLAUGHTER COWS: UTILITY 48.00-53.00; LOW DRESSING 45.00-48.00; HIGH DRESSING TO 55.25; CANNERS 44.00-48.00; SHELLY 44.00 DOWN.

BULLS: YG#1 1800-2200 LBS. 63.50-68.00.

FED STEERS: HIGH CHOICE 1100-1300 LBS. 76.00-82.00; SELECT 67.00-72.00; STANDARD 60.00-64.00.

FED HEIFERS: SELECT 850-1100 LBS. 63.00-68.00.

VEAL CALVES: CHOICE 170 LBS. 96.00; GOOD 80.00-90.00; CULLS 80-110 LBS. 42.00-49.00; 50-80 LBS. 38.00-43.00; WEAK AND ROUGH 37.00 DOWN.

FARM CALVES, HOLSTEIN BULLS: #1 95-125 LBS. 130.00-164.00; #2 80-110 LBS. 80.00-125.00; HOLSTEIN HEIFERS 90-125 LBS. 115.00-157.00; BEEF X BULLS 80 LBS. TO 122.00.

BUTCHER HOGS: #1 AND 2 240 LBS. 47.00-48.00; #1 AND 3 215-260 LBS. 45.00-46.00; #2 AND 3 43.00-45.00; 270-300 LBS. 44.00-45.00; 1 LOT #2 AND 3 318 LBS. 42.00.

SOWS: 300-500 LBS. 41.00-43.50; 500-700 LBS. 43.00-45.00.

BOARS: 34.00-35.25.

STOCK CATTLE, STEERS: FEW 300 LBS. AT 90.50; 600-800 LBS. TO 78.00; 800-950 LBS. 64.00-72.50.

HOLSTEINS: 200-400 LBS. 77.00-91.00.

HEIFERS: 300-500 LBS. 66.00-75.00; 2 AT 84.50; 500-700 LBS. 64.00-74.00; 700-900 LBS. 60.00-66.00.

BULLS: 800-900 LBS. 56.00-59.00.
DAIRY REPLACEMENTS: LARGE SPRINGERS 950.00-1185.00; MEDIUM 700.00-950.00; FRESH COWS 660.00-800.00; SHORTBRED 400.00-710.00.

HOLSTEIN HEIFERS, BY THE POUND: 150-300 LBS. 95.00-114.00; FEW 550 LBS. 88.00.

LAMBS: CHOICE 50-60 LBS. 76.00-79.00.

GOATS: LARGE TO 97.00; MEDIUM TO 65.00.

PIGS AND SHOATS: BY THE HEAD, 20-30 LBS. 25.00-37.00; 30-50 LBS. 35.00-51.00; 50-70 LBS. 46.00-54.00; BY THE POUND, 115 LBS. 50.00; 187 LBS. 47.00.

STOCK BOARS: 215-260 LBS. 38.00-40.00.

NOTE: JAN. 9 SALE 1 HEREFORD-SIMMENTAL BULL 1 YR. OLD, 1000 LBS.; 15 HEAD HEREFORD AND BLACK/WHITE FACE STEERS AND HEIFERS 500-800 LBS. HAD SHOTS AND WORMED.

Morrisons Cove Livestock

Martinsburg, Pa.
Dec. 31, 1990
Report supplied by auction
MARKET REPORT UNAVAILABLE DUE TO HOLIDAY.

HOSTETTER PORK



Wanted To Buy Crippled and Disabled Sows and Boars

Hogs Slaughtered For Federal Inspection
PHONE 717-274-7609

CHESTER COUNTY HAY SALE

"The fastest growing brokerage in Chester County"
Buying & Selling All Types Of Hay & Straw
Satisfaction Guaranteed
For more information on an "A" rated brokerage
Call JOHN PRIMUS
215-384-1069

HORSE SALE
FRI. JAN. 18, 1991
10:00 A.M.
Tack 9:00 A.M.

NEW HOLLAND SALES STABLES INC.
THE ACTION AUCTION

SPECIAL DAIRY SALE
WED. JAN. 9, 1991
SEE SPECIAL
CONSIGNMENTS
PAGE F38

LIVESTOCK IS OUR ONLY BUSINESS

MONDAY

SLAUGHTER HOGS

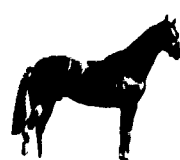


EARLY BIRD HOG SALE
8:00 A.M.

Sell Your Hogs At New Holland Sales Stables, Inc.
See them weighed, sold and pickup your check.

10:00 AM

HORSES MULES



1:30 PM
BEEF SALE

SHEEP



CALVES

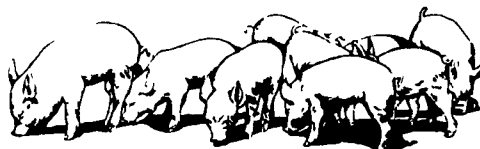
WEDNESDAY

DAIRY COWS
11:00 AM
COW SALE 12:00 NOON



We have the usual run of 50 to 100 Heifers, all ages.
Loads of fresh cows and springers from our regular shippers.
Also some local fresh cows and springers.

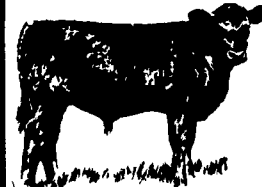
1:30 P.M.
FEEDER PIG SALE



Pigs are accepted after 6:30 A.M. State graded from 8 to 12
Dairy Barn and Feeder Pig Barn are cleaned and disinfected weekly for your protection.

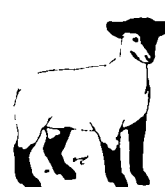
THURSDAY

Beef Auction
10:00 A.M.
BULLS
STEERS
BEEF COWS



STOCKERS
&
FEEDERS

12:30 P.M.



SHEEP
GOATS
CALVES



NEW HOLLAND SALES STABLES, INC.

12 Miles East of Lancaster Off Route 23, New Holland, Penna.

MANAGERS
Norman & David Kolb - 717-397-5538

Field Representatives
Luke Eberly - 215-267-6608 738-1865
Homer Eberly - 215-267-3047

Sale Barn Officer Manager
Roger Floyd - 717-354-4341

Order Buyer
Paul Good - 215-445-6662

Feeder Pig Representative
Mel Hoover - 717-354-8397