

Triplets Debut

(Continued from Page A52)

sewing project. "I like sewing, but I can't sew as good as my sisters," he said.

He prefers soccer, basketball, baseball, and fixing up model trains. He likes to help his dad work in the yard and garden.

His triplet Jana "reads all the time and loves stuffed animals." She is the only one of the triplets to play the piano. Recently, she was named "Student of the Month" at her school.

"It's fun being a triplet, she said. "We are very close to each other,

and we get a lot of attention."

Her sister Kara disagrees. "It's not that great," she said.

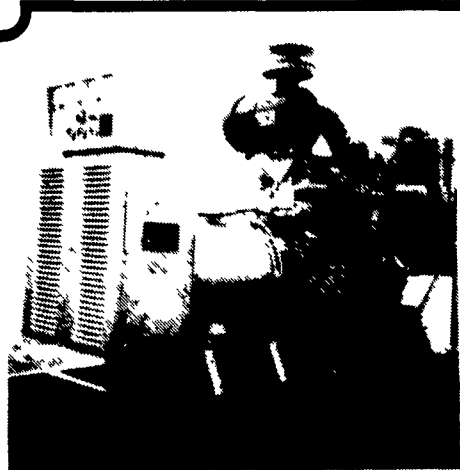
She thinks it would be better if her brother were another girl. He and all boys, she surmises, always think they have to win every game.

Kara is known as the "neatnik." She cleans all the time, is always straightening things and picking things up. Sometimes, she exasperates the family by throwing things away during her cleaning sprees, yet she impresses them by

always fixing her bed and dusting the furniture.

All the Gallagher children will compete in 4-H sewing at the Farm Show. All enjoy sewing and plan to continue it as a hobby. The children also are adept at cooking. The girls have their sights set on becoming teachers; Lance wants to be an architect.

The Gallaghers' projects will be displayed at the 4-H Textile Science display in the 4-H Family Living Department at the Farm Show Complex.



MARTIN ELECTRIC PLANTS

Power You Can Depend On!

New 125 KW Cummins

GENERATOR SETS FOR SALE

- 150 KW Detroit Diesel-Used
- 100 KW Detroit Diesel 12V71N Long Life RPM-Used
- 60 KW Isuzu Diesel-Used
- 150 KW Murphy Diesel-Used
- 100 KW Murphy Diesel-Used
- 25 KW Isuzu Diesel-New
- 15 KW Isuzu Diesel-Used

RD #2 Box 28 Pleasant Valley Rd., Ephrata, PA 17522
Tel: 717-733-7968 Fax: 717-733-1981

Public Auction Register JANUARY

TUES. JAN. 8 - 12:30, Carpet Auction, located Harpursville, NY, Charlie Manassee, Auct.

FRI. JAN. 11 - 12:00, Development Property,

located at W. Clover Ave., & N. Jackson St., Strasburg, PA, Baldwin Industrial Liquidators, Inc., Auctions.

FRI. JAN. 11 - 1:30PM, State Graded Feeder Pig Sale, Carlisle Livestock Market Inc., Exit 12 E. off I-81.

PUBLIC AUCTION AT RUDNICK'S SALES, ROUTE 213, GALENA, MD. SATURDAY, JANUARY 12th, 1991 AT 9:00 A.M.

Furniture And Antiques From Local Estates To Include: Antique Baby Carriage, Bird Cage, Mahogany Hall Table, Queen Anne Style Ball & Claw Footed Chair, 4 Pc. Modern Bedroom Set, 3 Pc. Single Bed Set, A Fine Selection Of Oriental Rugs, Cut Glass, Sterling, Silverplate, Roseville, Hummel's, Decoy Lamp, 2 Air Conditioners, Microwave, Marine Equipment To Include Compass, 3 Depth Finders, Electric Winches, Marine Radio. **Jewelry To Include:** 14K-Y/G Ring With Center Pink Tourmaline w/Side Diamond, 14K-Y/G Ring With Center Blue Topaz & Diamonds, 14K-Y/G Cocktail Ring With Green Emeralds & Diamonds, 14K-Y/G Ring With 1.0CT Diamond, Ladies Diamond Cocktail Ring, 1 ct. Dia. Tennis Bracelet, 14K-Y/G Ladies Diamond Band, Ladies 18K Yellow Gold Estate Ring With Emerald Inlay. More Consignments Are Arriving Daily.

Our Next Furniture & Antique Sale Will Be Sat., January 26th, 1991.

HARRY RUDNICK & SONS, INC.
Sales Manager, Auctioneers,
Real Estate Broker

Galena, MD 21635 Phone: 301-648-5601

MF 245 diesel tractor, orchard model, 38 h.p., 2,000 hrs., all attachments
MF 265 diesel tractor w/quick mount 6' front end loader, 2,200 hrs., 55 h.p., all attachments
1980 FMC speed sprayer, 500 gallon, Detroit diesel engine, bean pump
Hyster H25E forklift, 144" lift, LP gas, all terrain tires
(100) 20 bushel fruit bins, 48"x40"
Bally pref/fab cold storage 80'x60'x18'
(2) 10 h.p. compressors, (4) blowers, condenser

Contact: Ted Barclay
609-799-2074

"Call Us For Your New Equipment Needs. Ask About Our Program Options."

USED EQUIPMENT

- NI 802 Uni System 868 chopper, 768 3R N/W head, 866 windrow p/u, 818 combine w/813 grain head, excellent condition
- (2) NH L35 skid steer
- Ford 555A TLB w/extendable dipper extremely clean
- Ford 555B, TLB, 4WD, less than 500 hrs.
- Ford 2110 SSS, 4 WD, w/776 loader
- David Brown 1210 real nice condition
- David Brown 995
- Ford 800
- Ford 8N
- (2) Ferguson 20
- Ferguson belly mower
- Allis Chalmers C w/belly mower, just rebuilt
- Guappo wheel rake, like new
- NH 269 w/thrower
- (2) NH 273 baler, SS/PU & bale thrower
- NH 850 round baler, manual wrap
- NH Super 717
- JD 65 blower
- Fox 1R corn head f/Fox 2000
- NI: 214, 17 ground drive, ex. cond.
- Knight 252 spreader endgate & top beater
- JD 54 spreader
- NH 520 w/endgate, 510 triple beater, excellent condition
- NH Haybines: 479, 488, 495, 1469 and 1495, partial cab
- Oliver drill 13 disc

(717) 243-2686

R & W EQUIPMENT

Formerly Paul Shover's Inc. Carlisle, PA

PUBLIC AUCTION

VALUABLE 69-ACRE LANCASTER COUNTY LIMESTONE FARM

64 Acres Tillable

MANHEIM TOWNSHIP

Located At The Intersection Of Kiesel Hill Road & Oregon Road, Lititz, Pa.

WED., FEB. 27, 1991
1 P.M.

OPEN HOUSE DATES: Fri., Jan. 25, 1-3; Feb. 1, 1-3. For Additional Information Contact Auction Firm.

High Assoc. Purchased This Farm In 1987 When It Was Zoned Industrial; Having Public Sewer & Water & Airport Nearby. High Assoc. Felt That This Was A Good Investment For Future Development. Since The Property Has Been Rezoned To Agricultural, High Assoc. Has Decided To Sell The Property, Since It No Longer Fits Into Its Strategic Plans.

2 1/2 Story Brick Farmhouse With Wrap-Around Porch With Additional 1 Story Frame & Brick Summer House With Walk-In Fireplace. Modern Panelled Kitchen; LR, DR w/Wall-To-Wall Carpet; Parlor Room; 4 Lg. BRs; Full Attic; Arch Cellar Basement; Heated By Coal Stoker Hot Water Heat.

Large Frame Limestone Bank Barn Converted Into Open Horse Stalls. Concrete Block & Steel Cow Barn With 56 Tie Stalls With Automatic Barn Cleaner, Large Industrial Fans, Attached Milk House With 2 Feed Bins, 2- 18'x70' Concrete Stave Silos; 1- 12'x60' Concrete Stave Silo. Other Buildings Include Large 4-Bay Steel Pole Barn; Wire Corn Crib; Frame 4-Bay Garage; 20 Fruit & Nut Trees.

Terms: 10% Down, Balance By April 15, 1991. All Future Transferable Development Rights Will Be Included In The Auction.

T. Robert Appel, Atty.
Auction For:

HIGH ASSOC. LTD.

Auction Conducted By The
J. Omar Landis Auct. Service
Jay M. Witman AU001127-L
Box 501, Ephrata, PA 17522
717-738-7900, 665-5735

| | |
|---|----------|
| Massey Ferguson 1135 Tractor w/Cab..... | \$10,500 |
| Ford 801 w/Loader | \$6,800 |
| Ford 2000 Diesel w/Power Steering | \$5,900 |
| Ford 1200 4 Wheel Drive NICE..... | \$4,900 |
| Ford 8N Tractor | \$2,900 |
| Farmall 200 Fast Hitch..... | \$1,500 |
| NH L-555 Skid Steer Loader..... | \$11,500 |
| NH 455 Skid-Steer..... | \$9,500 |
| NH L-445 D, Skid-Steer | \$8,500 |
| NH 445 Skid-Steer..... | \$7,500 |
| NH L-225 Gas, Skid Steer | \$5,500 |
| Gehl 4400 Skid-Steer | \$2,900 |
| New Holland 853 Round Baler w/Bale Command LIKE NEW..... | \$12,500 |
| New Holland 855 Round Baler Hydraulic..... | \$9,500 |
| New Holland 630 Round Baler, Like New..... | \$7,500 |
| New Holland 851 Round Baler Auto Wrap | \$7,500 |
| New Holland 850 Round Baler, Manual | \$4,500 |
| New Holland 316 Baler | \$8,500 |
| New Holland 320 w/70 Thrower (Choice of 2)..... | \$7,500 |
| New Holland 315 w/Thrower..... | \$6,000 |
| New Holland 310 w/70 Thrower "Nice"..... | \$5,500 |
| New Holland 276 Baler w/Thrower | \$3,500 |
| New Holland 273 Baler w/Thrower | \$3,000 |
| New Holland 269 | \$2,450 |
| New Holland 271 Baler | \$1,900 |
| New Holland 1495 12 ft. SP Haybine Hydro | \$13,500 |
| New Holland 1495 12 ft. SP Haybine Planetary | \$11,500 |
| New Holland 1469 9 ft. SP Haybine | \$4,900 |
| New Holland 495 Haybine 12 ft. (Choice of 3)..... | \$6,000 |
| New Holland 489 9 ft. (Choice of 3) | \$6,500 |
| New Holland 479 | \$3,500 |
| New Holland 477 Haybine..... | \$3,900 |
| New Holland 55 Rake | \$1,200 |
| New Holland 463 Disc Mower..... | \$2,900 |
| New Holland 1900 S.P. Forage Harvester w/4 Row Head..... | \$65,000 |
| New Holland 890 Forage Harvester (Choice of 2) | \$5,500 |
| New Holland 770 Forage Harvester (Choice of 2) | \$3,850 |
| New Holland 718 Forage Harvester | \$3,500 |
| <i>Corn Heads, Windrow Pickups & Sickle Bar Heads Available</i> | |
| New Holland 30 Forage Blower (Choice of 3) | \$2,000 |
| New Holland 28 Forage Blower..... | \$1,650 |
| New Holland 367 Flail Tank Spreader..... | \$1,900 |
| New Holland 328 Box Spreader | \$2,200 |

Ceresville Ford-New Holland, Inc.



8102 Liberty Road,
Frederick, Md. 21701

- 301-662-4197
- 301-293-6310
- 301-857-0711
- Outside Maryland 800-331-9122



Belarus Tractor, 822, 4WD,
85 HP, 80 Hours, full cab,
AC, Like New..... \$12,700

10' Hi-Co Bushhog,
Like New \$2,000

12' Pasture Harrow,
New \$450

NH 495 Haybine,
12' Cut..... \$2,300

NH 276 Baler \$2,100

(2) NH 56 Rakes \$950/each

703/869-6187