

# QUALITY FARM EQUIPMENT

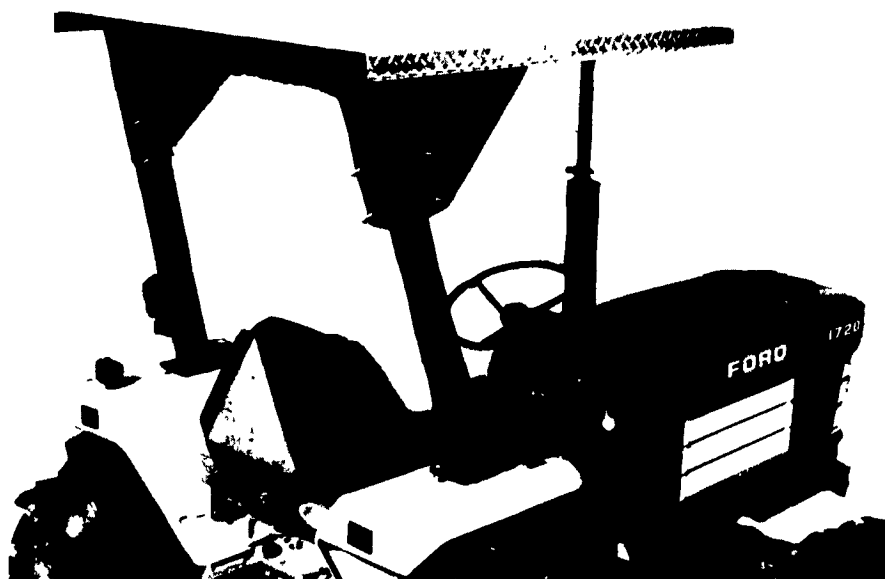
STAY COOL



PERRYCO ALUMINUM TRACTOR CANOPY

**FEATURES:**

1. Made of aluminum deck plate material
2. Undercoated with automotive to absorb sound



**BENEFITS:**

1. Will not rust like steel or deteriorate like fiber glass
2. Helps keep driver cool
3. Reflects the sun
4. Dissipates heat faster



P.O. BOX 7187  
WACO, TX 76714

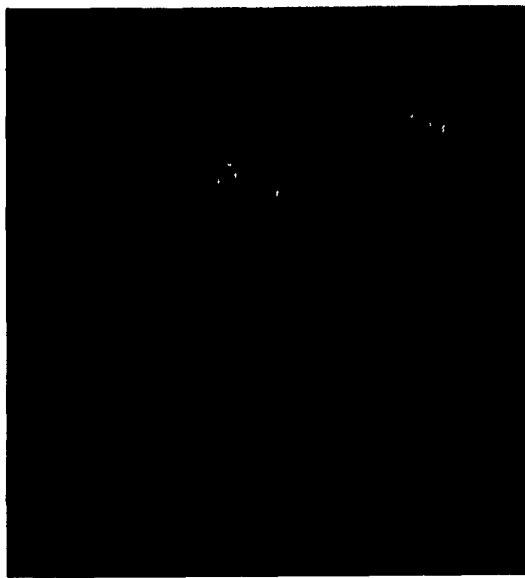
TX WATS 800-792-3246  
USA WATS 800-433-3349



Shaver Post Driver

**DRIVERS**

- Set each post in seconds
- Crank or hydraulic base plate for plumb-true driving
- Front or 3-point mounting
- Square post capacity of 7 1/8" to 10 7/8" with a maximum post length of 10'
- Drives steel, wood or even a railroad tie.



Shaver Post Hole Digger

**DIGGERS**

- Enclosed gearbox
- Straddle-mounted tapered roller bearings for strength
- Fits category I and II, 3-point hitches

3 Models Available with augers, diameters from 4"-30" and length from 42"-56"



Super Slide w/Post Driver

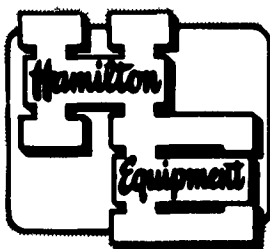
**SUPER SLIDE**

- Features:
- Hydraulic Swivel up to 155°
  - Hydraulic Tool Bar for extension to 24" to the right

3 Models Available

# SHAVER

Graettinger, IA 51342  
Phone (712) 859-3293



Telephone (717) 733-7951

**HAMILTON EQUIPMENT, INC.**

Wholesale Distributors

Visit Our Exhibit During The PA Farm Show, Booth #'s 314-335 Main Floor

Ephrata, PA

Raphine, VA