

# Increased Width On Pickup Heads



New wider Super Sweep windrow pickup heads for New Holland tractor-powered forage harvesters handle large windrows, double windrows, or unranked crops. Closely spaced, curved lines put more of the crop into the harvester.

NEW HOLLAND (Lancaster Co.)— New wider, Super-Sweep windrow pickup heads for New Holland pull-type forage harvesters are more effective in uneven or malformed windrows and simplify crop pickup in field corners and on headlands. Increased width makes it easier to gather doubled or converged windrows.

The new Model 890W windrow pickup is designed for the Model

790 harvester built for tractors of up to 150 horsepower. A full seven feet wide, the 890W has 84 closely spaced curved tines for large windrows or unranked crops.

The Model 990W pickup head fits Model 900 Ford New Holland harvesters designed for tractors of up to 210 horsepower. The new 990W head is seven and one half feet wide with 120 closely spaced curved tines.

Liek the 890W, it features open end side sheet design. The new designs help simplify haylage harvest and boost capacity, according to John Oehler, Ford New Holland product manager for forage equipment.

Coupled to a large tractor, the Model 900 harvester has ample capacity for large double windrows in heavy crops.

## ADC - For the Long Pull

Visit With Us At The Pennsylvania Farm Show, North Building

"When non-members ask me why they should belong to Atlantic Dairy Cooperative, I tell them that ADC offers a guaranteed market, financial stability and outstanding benefits.

"We're the region's most successful co-op. In the past three years, we have returned more than \$75 million to members in dividends, over-order premiums and quality bonuses. That's an average of nearly \$21,000 per member.

"If you are not an ADC shipper and are having second thoughts about your own milk market, then you should talk to the one with staying power."



Robert B. McSparran  
President

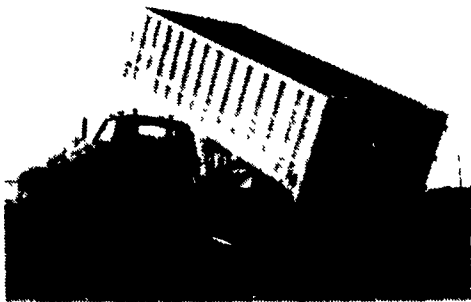


1225 Industrial Highway  
Southampton, PA 18966  
1-800-888-MILK (PA)  
1-800-645-MILK (DE, MD, NJ, NY, VA)

ALUMINUM GRAIN BODIES  
& ALUMINUM REPAIRS by



Rugged  
Strength



Dependable  
Performance

These ultra-light bodies are designed for strength through engineering, not strength with bulk. For example a 16' grain body with tailgate and 48" sides weighs only 1490 lbs. complete. We'll build you any length or any side height up to 60".

Also available

- ★ Double swinging hay hauling tailgate
- ★ Barn door type tailgate
- ★ Slide out cattle chutes
- ★ Diamond Flooring
- ★ Pull out panel tailgates
- ★ Any size grain chute

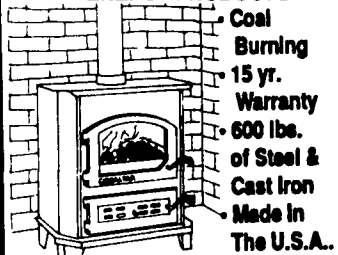
**HEWEY WELDING**

Box 2312, RD 4 Lebanon, PA 17042  
(717) 867-5222

Water  
Problems?

See Ad  
Page #F-26

**GIBRALTAR**  
ENERGY PRODUCTS



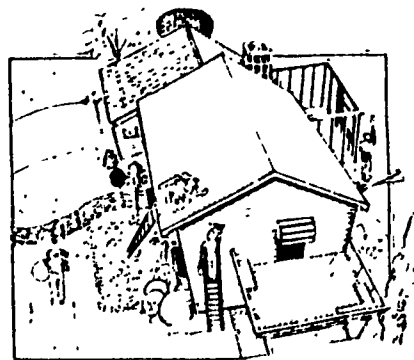
- Wood & Coal Stoves
- Fireplace Accessories
- Ducane Gas Grills

**Bowman's  
Stove Shop**  
(717) 733-4973  
906 E. Main Street  
Ephrata • Rt. 322  
(1 M. E. of Rt. 222)

Mon., Tues. & Wed. 10-6 Th. & Fri. 10-8 Sat. 10-4

# W&J Let Your Dreams Come True At . . . WALTER & JACKSON, INC.

- ◆ Millwork
- ◆ Trusses
- ◆ Owens Corning Roofing
- ◆ Design and Plan Services
- ◆ Anderson Windows
- ◆ Paneling & Ceiling Material
- ◆ Wheeling Channel Drain
- ◆ Cedar Siding
- ◆ Weather Shield Windows



- ◆ Lumber
- ◆ Pole Barns
- ◆ Insulations
- ◆ Stanley Doors
- ◆ Glen Gery Brick
- ◆ Treated Yellow Pine
- ◆ Aristocrat Kitchens
- ◆ Aluminum & Vinyl Siding
- ◆ Metered Concrete

RESIDENTIAL • COMMERCIAL • AGRICULTURAL

SERVING THE AREAS BUILDING NEEDS SINCE 1872



**WE  
DELIVER**  
From All Locations

E. GAY ST., CHRISTIANA, PA 17509  
215-593-5195 / 857-2613

18 N. HESS ST., QUARRYVILLE  
717-786-2171

FARMERSVILLE RD., HINKLETOWN, PA  
717-354-4911

Mon.-Fri.  
6:30-5 p.m.  
Sat.  
6:30-Noon