

**Central U.S. Carlot**

**Pork Report**  
Dec. 26, 1990

Report supplied by USDA

CENTRAL U.S. CARLOT PORK REPORT FOB OMAHA BASIS INCLUDES MAJOR PRODUCTION AREAS IN MIDWEST AS OF 3:00 P.M.

COMPARED FRIDAY'S 3:00 P.M. CLOSE: FRESH PORK LOINS NOT WELL ESTABLISHED; BUTTS WEAK TO \$1.00 LOWER; SKND. HAMS STEADY TO WEAK; SDLS. BELLIES MOSTLY \$1.00 HIGHER. DEMAND LIGHT TO MODERATE, BEST FOR PROCESSING ITEMS. MOVEMENT MODERATE ON MODERATE SUPPLIES AND OFFERINGS.

LOADS PORK CUTS 49.5  
LOADS TRIM/ PROCESS PORK PORK CUTS 7.0  
LOINS, REG., FRESH 14-18 LBS.\* , WGH TD AVG. UNQUOTED  
1/2" TRIM, 14-18 LBS , WGH TD. AVG. UNQUOTED.  
18-22 LBS.\* , 2 LOADS, RANGE 102 00, WGH TD. AVG. 102 00.  
1/2" TRIM 18-22 LBS., 2 LOADS, RANGE 118 00, WGH TD. AVG. 118 00  
COMBOS 22/UP LBS., RANGE 85.00, WGH TD. AVG. 85.00 C.  
LOIN,BLS CTRCT 5-7 LBS. RANGE 224 00, WGH TD AVG 224 00 A

BNLS SIRLOIN .75-1# 5 LD , RANGE 138 00, WGH TD AVG 138 00  
TNDRLN, MUSCLE-OFF RANGE 324 00, WGH TD AVG 324 00 A  
BOSTON BUTT 4-8 LBS \* , 3 5 LOADS, RANGE 79 00-84 00, WGH TD AVG 82 71.  
1/2" TRIM 4-8 LBS , 3 5 LOADS, RANGE 97 00-103 00, WGH TD AVG 101 29  
COMBOS 8/UP LBS , 1 LOAD, RANGE 73 00, WGH TD AVG 73 00  
SPARERIB 1.5-3.5 LBS , 2 5 LOADS, RANGE 110 00-112 00, WGH TD AVG 110 40  
3.5-5.5 LBS , 1 LOAD, RANGE 82 00, WGH TD. AVG. 82 00  
SPARERIB, FROZEN 1.5-3.5 LBS., RANGE 110.00, WGH TD AVG 110 00 B

3.5-5.5 LBS., RANGE 81.00, WGH TD AVG. 81.00 B.

LOIN, BACKRIB (BOXED) FRSH/FRZN 1.75/DN LBS., RANGE 223.00-238.00, WGH TD. AVG. 230.50 E  
HAM, SKINNED, FRESH 14-17 LBS., 1 LOAD, RANGE 72.00, WGH TD. AVG. 72.00.  
17-20 LBS., 15 LOADS, RANGE 68.50-70.00, WGH TD. AVG. 69.83.  
20-26 LBS., 7 LOADS, RANGE 67.00-69.00, WGH TD. AVG. 68.00.  
26-32 LBS., UNQUOTED.  
32/UP LBS., 1 LOAD, RANGE 62.00, WGH TD. AVG. 62.00.

HAM, SKINNED, FROZEN 14-17 LBS., RANGE 75.50, WGH TD AVG. 75.50 A.  
BELLY, SDLS, SKIN-ON, FRESH 10-12 LBS., UNQUOTED.  
12-14 LBS., 2 5 LOADS, RANGE 59.00, WGH TD AVG. 59.00.  
14-16 LBS., 2 5 LOADS, RANGE 59.00, WGH TD. AVG. 59.00.  
16-18 LBS., 5 LOADS, RANGE 54 00-56 00, WGH TD. AVG. 54.60.  
18-20 LBS., 2 LOADS, RANGE 51.00, WGH TD. AVG. 51.00.  
20-25 LBS., 3 LOADS, RANGE 45 00, WGH TD. AVG. 45.00.

PORK TRIMMINGS BONELESS PROCESSING PORK (CHEMICAL LEAN) COMBO 42% FRESH, 2 LOADS, RANGE 28 00-30 00, WGH TD. AVG 29 00  
COMBO 72% FRESH, RANGE 72.00-73 00, WGH TD. AVG 72.43 A.  
BOXED 72% FROZEN, 2 LOADS, RANGE 76.00, WGH TD. AVG. 76 00  
BONELESS PICNIC MEAT COMBO 72% FRESH, RANGE 72 00-74.00, WGH TD. AVG. 73.00 A  
BOXED 72% FROZEN, RANGE 79 00, WGH TD. AVG 79 00 A  
SKINNED JOWLS COMBO FRESH, 1 LOAD, RANGE 21 00, WGH TD AVG 21 00  
BOXED FROZEN, 2 LOADS, RANGE 25 00, WGH TD AVG. 25 00

NOTE: (\*)REFLECTS 1/2" TRIMMED PRODUCT BROUGHT BACK TO A REGULAR COMMODITY BASIS  
ABCDE AFTER QUOTES REPRESENTS DAYS SINCE LAST ACTUAL MARKET TEST QUOTES ARE DROPPED AFTER 5 DAYS OF NO TEST

OR BEFORE IF THEY NO LONGER REFLECT CURRENT MARKET CONDITIONS.

**PORK CARCASS CUTOOUT WEDNESDAY, DEC. 26**

ESTIMATED GROSS CUTOOUT VALUES OF A 175 LB HOG CARCASS BASED ON USDA CUTTING YIELD TESTS AND CARLOT PRICES. WEDNESDAY'S CARCASS GRADES & PRICES PER CWT.:

CHANGE FROM FRI.: US#1 70.22, VALUE-.19; US#2 68.07, VALUE-.21; US#3 65.91, VALUE-.22; US#4 63.75, VALUE-.23.

TODAY'S CALCULATIONS FOR US#2 175 LB. PORK CARCASS: HAM, SKINNED, 14-20 LBS., 21.01% OF CARCASS, 71.00 FOB VALUE; LOINS, 1/2" TRIM, 14-22 LBS., 20.33% OF CARCASS, 123.50 FOB VALUE, CHANGE FROM FRI. -1.00.

BELLIES, SDLS, 12-14 LBS., 13.90% OF CARCASS, 59.00 FOB VALUE, CHANGE FROM FRI. 2.00; SPARERIBS, 3 5 DN. LBS., 3.03% OF CARCASS, 110 00 FOB VALUE, CHANGE FROM

FRI. -4.00.

PICNICS, 8-12 LBS., 10.31% OF CARCASS, FOB VALUE 49.75; BUTTS, 1/2" TRIM, 4-8 LBS., 7.25% OF CARCASS, 101.00 FOB VALUE, CHANGE 3.50.

JOWL, 2.85% OF CARCASS, 21.00 FOB VALUE; NECKBONES, 1.52% OF CARCASS, FOB VALUE 14.00.

FEET, 1.05% OF CARCASS, 20 00 FOB VALUE; TAILS, .22% OF CARCASS, FOB VALUE 53.00.

TRIM 72%, 2.19% OF CARCASS, 72.50 FOB VALUE; LARD, 10.85% OF CARCASS, 12.25 FOB VALUE.

TOTAL CARCASS: 94.51%. US#2 CARCASS VALUE PER CWT. 68.07.

NOTE: VALUE MAY CHANGE WITHOUT ADEQUATE TEST.

**Isenock Auction**

New Park, PA

Monday, Dec. 17, 1990

Report supplied by auction

SLAUGHTER COWS GOOD 53 00-56.50; LOW TO GOOD 51.00-52 00; LOW AND SHELLS 48 75 AND DOWN.

VEAL CALVES 115-125 LBS. 90 00-108.00; 100-110 LBS. 80 00-115 00, 90-95 LBS. 70.00-98.00, 75-85 LBS. 60 00-81.00; WEAK AND ROUGH 59.00 AND DOWN.

FEEDER CATTLE STEERS 930-935 LBS. 70 00-70 25, HEIFERS 295-325 LBS. 80 00-81.00; 370-480 LBS 73 00-77 00.

BULLS 585-590 LBS. 70 00  
SOWS 325-590 LBS 40 75 AND DOWN

SHEEP 85-90 LBS. 49.00-55 00.  
GOATS MEDIUM 49 00-60 00  
HEAD, SMALL 34.00-35.00 HEAD.

WE WILL BE BE CLOSED MON., DEC 31. HAVE A HAPPY AND SAFE HOLIDAY.

**HOSTETTER PORK**

**Wanted To Buy Crippled and Disabled Sows and Boars**

**Hogs Slaughtered For Federal Inspection**

**PHONE 717-274-7609**



**STORAGE TRAILERS**

**For Rent**

- ★ Delivered To Your Location
- ★ Safe And Inexpensive Storage

**KEENS**

SERVICES INC.



**717-626-5420**

850 Keens Road, Lititz, PA 17543

**CHESTER COUNTY HAY SALE**

*"The fastest growing brokerage in Chester County"*

**Buying & Selling All Types Of Hay & Straw**

*Satisfaction Guaranteed*

For more information on an "A" rated brokerage

**Call JOHN PRIMUS 215-384-1069**

**HORSE SALE**

**FRI. JAN. 4, 1991  
10:00 A.M.  
Tack 9:00 A.M.**

**NEW HOLLAND SALES STABLES INC.  
THE ACTION AUCTION**

**START THE NEW YEAR RIGHT. ATTEND THE SPECIAL DAIRY SALE WEDNESDAY, JAN. 2**

LIVESTOCK IS OUR ONLY BUSINESS

**MONDAY**

**SLAUGHTER HOGS**



**EARLY BIRD HOG SALE  
8:00 A.M.**

Sell Your Hogs At New Holland Sales Stables, Inc. See them weighed, sold and pickup your check.

**10:00 AM**

**HORSES MULES**



**1:30 PM**

**BEEF SALE**



**SHEEP**



**CALVES**

**WEDNESDAY**

**DAIRY 11:00 AM COW SALE 12:00 NOON COWS**



We have the usual run of 50 to 100 Heifers, all ages. Loads of fresh cows and springers from our regular shippers. Also some local fresh cows and springers.

**1:30 P.M. FEEDER PIG SALE**

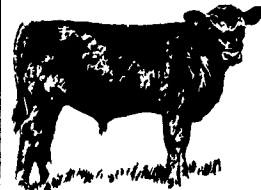


Pigs are accepted after 6:30 A.M. State graded from 8 to 12 Dairy Barn and Feeder Pig Barn are cleaned and disinfected weekly for your protection.

**THURSDAY**

**Beef Auction  
10:00 A.M.**

**BULLS STEERS BEEF COWS**



**STOCKERS & FEEDERS**

**12:30 P.M.**

**SHEEP GOATS CALVES**



**NEW HOLLAND SALES STABLES, INC.**

**12 Miles East of Lancaster Off Route 23, New Holland, Penna.**

**MANAGERS**

**Norman & David Kolb - 717-397-5538**

**Field Representatives**

**Luke Eberly - 215-267-6608 738-1865**

**Homer Eberly - 215-267-3047**

**Sale Barn Officer Manager  
Roger Floyd - 717-354-4341**

**Order Buyer  
Paul Good - 215-445-6662**

**Feeder Pig Representative  
Mel Hoover - 717-354-8397**