

1 FARM EQUIPMENT

10' Brillion Cultipacker \$500; 30' Hance Grain Leg, 100 Bu/Hr, Best Offer; King Wyse Corn Drag \$475; 12' JD spring tooth harrow \$325. 215-693-5027.

1486 International tractor four post tractor. Now being overhauled. Asking \$12,750. 717-438-3354

18438 Ring tractor chains; Gehl 1200 Harvester; 36' Cross elevator; 6-row Case chisel planter; 10' IH offset disc, 2100 gallon vacuum spreader 717-687-7090.

1952 JD cyclone B, NFE, \$900 1953 JD Cyclone B, original WFE, fully restored in show condition, \$2,500. (717)766-2287.

1973 6600 JD diesel combine, rotary screen, gear, 2700 Hrs, 443 corn head, engine overhauled at 1600 Hours \$9000 or/offer, might trade for 213, 215 flex head +cash 304-263-6627.

1975 3300, 1,621 hrs, shedded, immaculate condition, 13' head, \$7,500. Larry Stalter, "The Combine Man" 1-800-248-2151

1977 AC 7040, C A H., 140hp, 4,000 hours, clean and in excellent repair, serviced regularly, duals, \$9,500 OBO 717/426-2659

1977 Deutz 130-06, 125 HP, dual PTO and HYD, \$7000 OBO, 1974 Deutz, 100-06, 105 HP, dual PTO and HYD SP Green \$5500 OBO 717-426-2659

Ronk add A phase, static power convertor, model 80A, in-put 240V single phase, output 240V triple phase 717-354-5049

1989 Miller welder legend, 200 amp, 2 stage compressor w/5 hp Briggs & Stratton engine 717-225-5484

2705 MF tractor w/cab, AC, dual hydraulics, 18.4x38 rubber, weights, good condition \$8900 717-922-3340

'81 MF 850, 4WD, 1,800 hrs., very good, \$24,900.; '81 MF 850, 1,800 hrs., very good, \$22,900. Larry Stalter "The Combine Man". 1-800-248-2151

AC B tractor w/WFE, 1R cultivator and plow, \$1,200. (215)445-4410

NH 489 Haybine, nice, \$3,800. NH 75 Bale Thrower, like new, \$850. JD 7000 6RN corn planter, dry fert., \$3,800. 717/733-0575.

NI 290 9' mower conditioner, good condition. Priced To Sell. \$850. 301-756-4036 or 301-756-6277

Old Farm and Construction Toys, Trucks, Literature, Signs, Pedal Tractors, Advertising Memorabilia, etc. for sale. \$5.00 for 50 page list. Shown by appointment. I Buy-Sell-Trade Lloyd J Wenger, 831A Hilltop Rd., Myerstown, PA 17067. 717/866-7147 evenings.

One used 2550 JD tractor, one owner, low hours, 2360 hrs. Phone 703/433-2640 Dual hyds, 1000 540 pto, new tires

PARTS PRICED RIGHT CRAWLER TRACTOR PARTS

CURRENTLY DISMANTLING AC, Cat, IHC, JD, Case, Michigan, Hough, Galion and others. Loaders, dozers, graders, excavators, backhoes Many parts removed & checked, ship anywhere

NATIONWIDE PARTS LOCATER SERVICE NEW ARRIVALS FOR DISMANTLING

Case 1450, JD 350C LGT, Cat 977H, AC M-100 grader, AC 16B And more inventory changes weekly BALANDA EQUIPMENT PO Box 407 Route 29 Palm, PA 18070 1-800-322-8030

PLOW SHEARS, 16" 4 hole JD, \$6/each Cash and Carry. Also other makes and sizes All \$6/each Tractor Parts Co 717/784-0250

TIRONIE'S TARPS. SHIPPED ANYWHERE. 1-800-874-2928.

TUB GRINDER FARMHAND 880, good condition, \$5,000. 301-833-9091

Tye 10' No-till end wheel drill Legume attach. Excellent Condition, all updates \$4400 OBO. Lanco. 717-529-2723.

USED TRACTOR PARTS, also rebuilt clutches and torques We ship UPS. Hill-T Farm Sales - Service, 4295 Richmond Palestine Road, New Madison, Ohio 45346 513-548-0718

Used underground fiberglass tanks, 1,000 gallon & up Call for quote 215-356-2462

Vermeer round balers, 605J auto-weave, 605H, 605C, 504IS, 504F, 503I, and 403F; Vermeer and Lely round bale wrappers Vermeer 23' twin rake, Haybuster, NH haybine, disc mowers, 20' Lowboy 3 axles, Dyna-hoe and loader w/cab Vermeer parts and service, PZ and Tisco dealer. (412)423-4076

Vermeer stump grinder model 186, very good condition, low hours \$4000, Morback wood chipper, good condition \$4000 215-766-8557

WANTED: 1970-1975 Ford 4000 Tractor w/Select-O-Speed, Select-O-Speed need not work Saxonburg, PA 412/352-1081.

WANTED: Heavy offset disc, 7 or 8 foot. 717-432-4822

WANTED: NH fine litter pans w/hardware to fit 519, 679, 520 & 680 spreaders 717-949-3074 or 703-879-9926

We specialize in flat belting, cut to order baler throwers, self unloading wagons, long table blower belts Franklin Co 717-328-3591 If no answer 717-328-5603

WHEEL LOADER JD 444 w/cab, OROPS, \$11,500 301-833-9091

WHEEL LOADER DRESSER 510, 1979, ROPS, \$9,500. 301-833-9091

LOADERS IHC 1100 lbs Super A thru 140; Ford fits 8N, 9N, Jubilee, 600; Ford fits 600 thru 2000. T.J. Wheary & Sons, (717)687-0102.

LOADER TRACTOR IH 2500A, gas (574) w/2050 loader, runs well, \$4,500. 301-833-9091

LOADER TRACTOR FORD 420 w/torque converter, 3 pt. & no PTO, 1,100 hrs., excellent, \$4,500. 301-833-9091

LONG 1310 w/cab, 4x4, 100 h.p., \$3,000. 301-833-9091

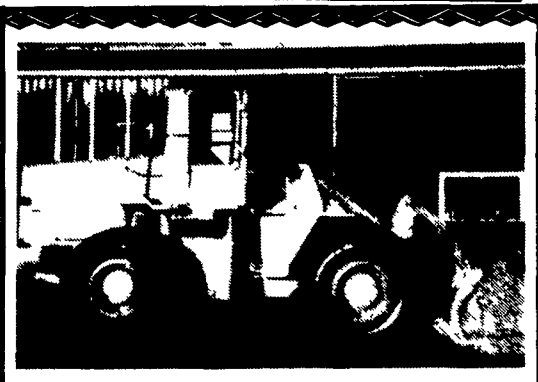
MANURE SPREADERS Farmall Cub #10, 50 bu., 3 to choose from; (2) NI 12A and #14A, 2 wheel; NI #10A, 4 wheel All spreaders are ground drive. (717)687-0102.

MF 20 utility tractor with cab and loader, 3PH, PTO, good tires, needs engine work, \$4,550 215/968-1812.

MF 2675, CAH, \$5,800 301-833-9091

MF 275 diesel 8 speed w/MF 236 loader Q/A, excellent condition, must see, \$7,900. (301)857-1065.

NEW 1988 Zetor 5245, 4WD Diesel Tractor, 52HP, factory heated cab, Sac \$10,500. Case 580C Backhoe, extra nice! \$11,500 607/699-3201



FR15 Flat Allis
1984 Model Runs Well and Has New Paint
\$26,500.00
717-438-3354

Rebuilt 404 diesel engine for JD4020, ready to go. Will sell or trade old engine. 717-597-5623.

Screening plant 1982 Rawson, top soil and sand screen, 20hp trailer mounted, excellent condition, \$9,000. 9 ton trailer, 3 axle, 22' bed, deck between wheels, \$1,400 (215)358-0725.

Sharp 5400 JD chopper, choice of heads, basic unit, \$25,800. Will send pictures Trade and finance Larry Stalter, "The Chopper Man", 1-800-248-2151

Small Farmer Special For Sale: JD 14T Baler; NH 256 Hay Rake, NI Cutter Flail Mower; 2 Grove 16' flatbed wagons, JD 14" 2 bottom plow. Phone 717/285-5781 after 5:30PM

SNOW CHAINS for most size tractors, used and new, reasonable. 42"-8' Snow Blades for L & G, Farm tractors and trucks Tom Wheary 717/687-0102.

Snow Plow, JD ABG-90, 7 1/2' wide, in good condition \$600. 717-428-1170

Soil Saver, Glencoe, 7 tooth, pull type, used very little, \$2,800 301/898-7426.

New air cooled diesel engine, 60 HP, easy cold weather starting, \$2,800. 10 HP air compressor, good condition, \$500 VH4D Wisconsin Engine w/clutch reduction, \$1,200 Smucker's Repair Shop, 94 Summit Hill Dr., Strasburg, PA 17579

New Holland #8 tandem forage wagon, in excellent condition \$4000 each, 301-733-7281.

New Holland 352 grinder mixer in good condition 215-267-2783

New Holland 269 and 268 Balers \$450 each 304-263-6627

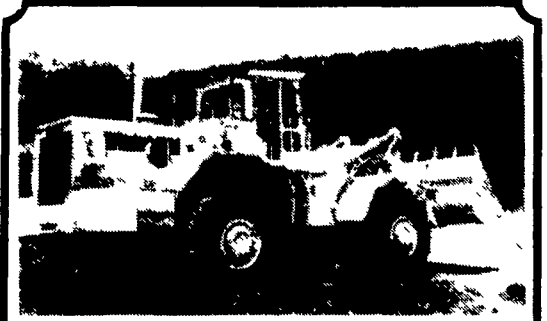
New & Used Parts For Oliver, Mnn. Moline & New Holland. 717-333-4256

NH 1033 stack wagon, 105 bale capacity, good condition (804)421-3114

NH 269 haybaler w/thrower \$700 301-898-7426

NH 275 baler, clean & original w/chute, \$2,250 717-949-3074 or 703-879-9926

NH 479 haybine \$1,800, NH 273 baler w/thrower \$900; Ford 5000 diesel, MF 135 diesel \$3,000, NI 323 1R corn picker \$1,000 (215)488-6491.



71-72 Terex Rubber Tired Loader 7 Yd. Bucket, Rock Tires, Cleaned and Painted, Fresh Engine 4 Months Warranty Left For An Older Machine Very Good Cond. Was ~~\$36,000~~ Reduced to **\$33,000** 717-438-3354

MARSHALL MACHINERY, INC.

Rt 652, Midway Between Indian Orchard and Beach Lake. Honesdale, PA 18431

(717) 729-7117

WE SHIP PARTS DAILY BY UPS. Hours: 8-5 Mon.-Sat.

TILLAGE EQUIPMENT

AUTO RESET PLOWS
AC: 2000 4 Btm
FORD: 3 Btm 3 Pth
IHC: Like New 720 4 Btm, 710 6 Btm. w/On-Land Hitch, 720 6 Btm w/On-Land Hitch, 700 4 Btm, 710 3-5-6 Btm
JD: 3600 Trailer Plow, 2600 6 Btm, 2500 7 Btm w/On-Land Hitch, 2500 7 Btm, 4-5 Btm w/Tandem Hitch; 2600 4 Bottom
KUBOTA: 3 Bottom
WHITE: 588 5 Btm
OTHER UNITS: Brillion 10 & 12 Ft. Cultmulchers, Massey 4 Btm. 3 Pth Rollover Plow, Kewanee 9 Shank Trailer Chisel Plow, Athens 7 Shank 3 Pth Chisel Plow, JD 1250 3 Btm 3 Pth
DISCS
AC: 2300 Tandem 10 Ft Disc, 3300 Transport Offset Disc, 14 Ft Tandem Wing Disc
ATHENS: 131 Tandem 11 Ft Plow Disc
BUSH HOG: 9 Ft Offset Plow Disc
IHC: 350 12 Ft Disc, 480 Tandem 20 Ft Wing Disc, 760 Offset 13 Ft Disc
JD: KBA 10 Ft Disc, 310 14 Ft Plow Disc
KEWANEE: 610 Tandem 16 Ft Wing Disc w/Folding Gang
MASSEY: 12 Ft Tandem Disc
TAYLORWAY: 13 Ft Rock Flex Disc
WHITE: Like New 13 Ft. Tandem Disc.
OTHER ITEMS: New Brillion 16 Ft Danish Tine Transporter Harrow, Glenco 3 Pth 4 Row No-Til Cultivator, 2-4-6 Row 3 Pth Cultivators

MANURE EQUIPMENT

LIQUID: 1500 Gal. Better-Bilt.
VACUUM: VanDale 2250 Gal.
SEMI-SOLID: Hedlund Martin Vanguard 2400 Gal. And 2900 Gal.
BOX SPREADERS: Large Assortment Of Ground Drive And PTO Drive Units From 75 To 350 Bushel.
MISC: 3000 Hedlund Martin Tank Mtd. On 1973 Int. Tandem Truck.

SPECIAL

New Kubota B20 Heavy Duty, 4WD, 20 HP Tractor Loader Backhoe, Regularly \$23,650 1 Only Demonstrator Now At **\$17,584**

Sales, Service & Parts For Deutz Allis, Kubota, New Idea, Hesston, Bush Hog And Brillion

HAY & FORAGE

FORAGE HARVESTERS: Gehl 1000 Tandem Axle w/Pick-Up Head, Hesston 7140 And 2000-150 Each With Choice Of Heads
FLAIL CHOPPERS: NH 36, NH 38 Like New
FORAGE BLOWERS: Gehl 99, NH 28
CHOPPERS: JD 3800, Hesston 7020 Hesston 7165
BALERS:
NI: 484 Round Baler
GEHL: 1310 Round Baler, Makes 4 Ft Bales
JD: 346 Sq Baler w/Thrower
DEUTZ: HD 490 Sq Baler w/Thrower
NH: 275 Square Baler
HESSTON: 5530 Round Baler
HAYBINES:
HESSTON: 1070, 1071, 1090
NH: 472, 489
IHC: 1190
GEHL: 1090
DISCBINES:
HESSTON: 1050
MISC: Good Selection Of Corn Heads, Assorted Rakes & Tedders, NI 272 Cut/Ditioner, Case IH 8610 Bale Processor, Hesston #10 Stack Processor, 40 Ft Round Bale Trailer.

CORNPICKERS

New Idea 323-1 Row, New Idea 324 Wide Row And 325 Narrow Row, Both Available With 8 Or 12 Roll Husking Bed Or Super Shelter

INDUSTRIAL

DOZERS: JD 450C w/6 Way Blade, Case 450 With 4-1 Bucket, Case 450B w/6 Way Blade, AC 653, AC HD10, IH TD15.
TRACTOR/LOADER/BACKHOES: Ford 3000, Ford 3500, Case 480, Case 580, Case W-3, Kubota B8200 4WD, AC 615, AC 715; Belarus 420A 4WD
OTHER ITEMS: AC 714 T/L w/Cab, AC 640 Loader, Oliver OC3 Crawler, JD 440 Log Skidder, Massey 2135 T/L Turf Special, Pettibone B66 Hi-Reach 4WD Industrial Forklift General 3 Axel 9 Ton Tag-A-Long Trailer, Bnkley 28 Ft Deck Equipment Transport Trailer Asplundh Brush Chipper, Brush Bandit Self-Feeding Brush Chipper, Industrial Air Compressor. 1976 GMC 5000 Truck w/45 Ft Ariel Bucket With Very Low Mileage

USED TRACTORS
AC: 160 Diesel w/Ft Ldr, 170 w/Ft. Ldr, 185 Diesel w/Cab, 190, 190XT, 190 w/Cab, 200 w/Cab, 5015, 5040 w/Ft Ldr, 5050 w/Ft Ldr, 6060, 6080, 6140 w/Ft Ldr, 7000, 7000 Diesel w/Cab, D17 Diesel, I-40
CASE: 1070 Diesel w/Cab
DEUTZ: 4006 w/Ft LoaderD6806, DX140
FORD: 545 w/Cab, 545A w/Cab, 3000, 3000 Diesel w/Ft Ldr, 4000 w/Ft Ldr, 5000, 7000, 7600 High Clearance 861, 8N's, Jubalee w/Ft Ldr
IHC: Super A, Super H, M, 574 w/Ft Ldr, 886, 1206 Turbo w/Cab, A High Clearance, 140 High Clearance, 200 Wide Front End, 100, Cubs
JD: G, 820 Diesel, 4440 4WD Dual Rears w/Cab
KUBOTA: L175, B6100 4WD, B7100 4WD w/Snow Plow, M 4950 4WD w/Ft Ldr, M5500 4WD w/Ft Ldr, M7950
MASSEY: 35 Delux w/Ft Ldr, 135 w/Ft Ldr, 275 Diesel

HIGH MOISTURE CORN EQUIPMENT
McKee Corn Hogs, Wetmore Grinder/Blower, Gehl 2 Row Snapper Head, New Holland 1 Row Snapper Head, Kools Re-Grinder/Blower, Speed King 80, 8" Grain Auger 24 Ft PTO Drive, Transport.

MISCELLANEOUS

SPRAYERS: Demco 500 Gal. Trailer Boom Sprayer Like New, Meyers 100 Gal. 3 Pth. Sprayer, Century 250 Gal. 3 Pth. Sprayer, Century 200 Gal. Trailer Sprayer.
LOADERS & CABS: Large Supply Of Front End Loaders And Cabs For Various Tractors.
MISC.: Used Rock Flakes, Bush Hog Mowers And Hammer Knife Mowers, Brillion 12 Ft. Smooth Roller, JD #30 Potato Digger, 3 Pth. Heavy Duty Tree Planter, Case IH Tub Grinder, NH 355 Mixer/Grinder Mill, New & Demonstrator Harley Rock Rakes, New 18.4x38 Radial Tires.
GENERATORS: Several PTO Driven Generators On Wheels-Up To 50 KW- Ideal For Standby Power.

PLANTING EQUIPMENT

AC 6 Row No-Til Corn Planter w/Liquid Fertilizer, Very Good Condition, AC 2 & 4 Row No-Til Corn Planters, Ford, John Deere, AC 2 Row 3 Pth Corn Planters, John Deere 2 Row Potato Planter, Brillion 10 Ft. Cultipacker Seeder; Brillion 5' Cultipacker; JD 8350 Double Disc Grain Drill.