


450x40 Ft. Snavely built Chicken house, excellent condition, 3,200 sq. ft. 1 1/2" beacon auger, with feeder pans every 24", 2000 drinker cups, drive units fans and motors, 12 ton sq. ft. bin, Big Dutchman chain feeder like new, Plasson waterers; Free: 30,000 sq. ft. 6" paperback insulation and ceiling board.
S.L. Stoltzfus
 3875 Old Philadelphia Pike
 Gordonville, PA 17529



Dismantle & Re-erect Preowned Structures
 Preowned Harvestore® Units in Stock
 Rebuilt Goliath® & Hercules Unloaders
 Leasing & Trade-ins

**GLASSLINED
 STRUCTURE
 ENTERPRISE**


2169 Main Street
 Rothsville, PA 17543
 717-626-0036

"The South Eastern School District is offering for sale one self-contained relocatable classroom. This unit can be seen at the Delta-Peach Bottom Elementary School. It is a steel frame structure in good condition. Interested parties may submit a sealed bid to the attention of

of
Ruth Ann Muetze
 Business Manager,
 P.O. Box 217
 Fawn Grove, PA 17321.
 The final date for submission is January 4, 1991 at 1:00 P.M.
Ruth Ann Muetze
 Secretary"

**★ FALL BLAST!!!
 TREMENDOUS SAVINGS
 ON SIZES BELOW**

• 30x50 • 42x60 • 50x110



**ATLANTIC BUILDING
 SYSTEMS, INC.**
 US: 800-431-1338 NY: 800-942-1234

WAIT!

Having roofing problems? Considering a new roof in the next 3-5 years? Before investing big dollars in an expensive new roof consider Poxy Coat II!

Poxy Coat II is good for most roofs.

- extremely flexible for long life
- is heat resistant up to 1000°.
- resists acid rain
- seals and protects
- comes in seven colors, plus black and white
- a fraction of the cost of a new roof.

For more information and a free estimate and consultation on coating your roof with Poxy Coat II contact:

Paul Brosey at (717) 426-3833 or Steve Bowman at (717) 684-8642

Paul Brosey Contracting also does painting, barn restoration and roof replacement.

**POLE BUILDINGS
 ERECTED**

24x32x8.....	\$3,553.00
30x56x8.....	\$7,072.00
28x32x10.....	\$4,699.00
30x40x10.....	\$5,861.00
32x40x10.....	\$6,026.00
32x64x10.....	\$8,996.00
40x64x10.....	\$10,993.00
40x64x12.....	\$11,700.00
40x88x12.....	\$15,365.00

All Prices Include Taxes,
 29 Gauge Painted Galvanized Steel, (Fabral), Trusses Spaced 4' On Center For More Snow Load. All Roofing And Siding Is Screwed On. Additional Charges Outside 30 Mi. Radius
 Call or Write
Stoltzfus Builders
 50 North View Rd., Lititz, PA 17543
 717-664-3540
 24 Hour Services

Pole Buildings
 Quality Custom Designed Buildings to Fit Your Needs
 All Sizes & Types
 Check our Prices
FREE Estimates - Fully Insured

KW
Construction
 Myerstown, PA
 (717) 933-8294

**GLENWOOD
 METAL FORMING**
 809 Glenwood Drive Ephrata PA 17522
717-733-9590

All Panels Cut To Length - Coverage 36" Width

Roofing And Siding

29 Gauge Galvanize	29 Gauge Painted
26 Gauge Galvalume	26 Gauge Painted

A New Product In Our Line

STANDING SEAM ROOFING

Manufactured at the job site. Suitable for flatter roofs with 4 to 5 ft. perlin spacing and 80 lb. per sq. ft. weight rating

We Also Stock The Following Items:

- Pre-Hung Doors
- Agri Build Windows
- Roll Door Track
- Ridge Vents
- Ridgolators
- Trolleys and Hardware

MUSSER & ASSOCIATES, INC.

RD #2
 Box 2881
 East Earl, PA 17519

ETTERVILLE

Hours: Mon.-Fri. 7-5
 (717) 354-7561
 Toll Free 1-800-331-1875

Sales

Come See What We Have!

- Round Roll NAPCO Coil Stock - White, Brown & Matching Colors.
- Trusses Made To Order
- Nails - Pole Barn, Commons, Painted Siding Nails
- Barndoor Track
- Screws
- Insulation-Fiberglass & Rigid, Blown-In Insulation
- Walk-In Doors & Overhead Doors
- Concrete Mix
- Treated Lumber
- NAPCO Vinyl Replacement Windows
- Sno-Jacs
- Spouting
- HAYFIELD Windows
- Painted Roofing & Siding:
- Aluminum Ceiling Material
- WHEELING CORRUGATING COMPANY
- ALUMAX BUILDING PRODUCTS
- AMERICAN BUILDING COMPONENTS

POLE BUILDINGS,
 Garages-Horse Barns-Storage-Commercial
 Completely erected, Overhead/Entrance Doors
 Many sizes/options available WENGER ENTERPRISES 1-800-767-9033

Storage Sheds & Lawn Furniture Brick Lane Woodworks, Elverson, PA 215-286-5370

WANTED Salvage to attic flooring, old farm houses, early log houses, large stone end barns and grist mills! 7PM to 9PM 717-334-0249

WANTED TO BUY Locust posts Must be 3"x6"x7' Paying \$5 00 301-833-9091

Log homes and barns, wide yellow pine flooring, antique wide white pine flooring Call 717-374-7122

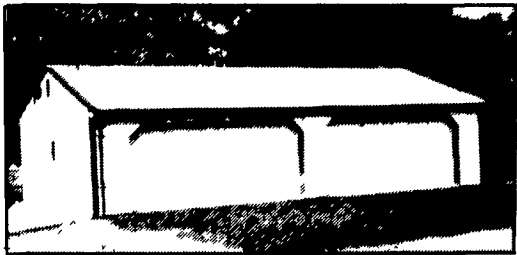
SWEET SAVINGS!

MUSSER & ASSOCIATES, INC.

RD #2
 Box 2881
 East Earl, PA 17519

Hours: M-F 7 to 8

SALES
 Phone For Free Estimates: 717-354-7561



- Custom Designed Pole Buildings
- Special Fabricated Trim
- Lumber
- Track & Overhead Doors
- Vinyl Siding
- Painted Galvalume & Mill Finished Steel

PRE-ENGINEERED TRUSSES
 Made To Order Within 10 Days!

ALUMAX
 BUILDING PRODUCTS



New and Used Structural Sch 40 Pipe For Sale 1/2" thru 8" Pipe.
J & L Equipment
 St. Thomas, PA
 717-369-2637