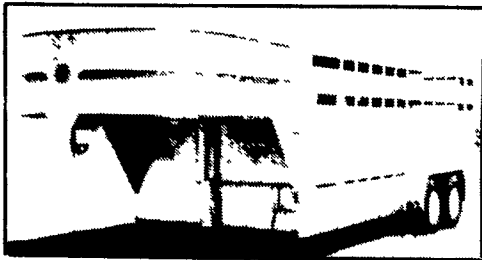




YOU CAN'T BUY BETTER THAN THE BEST

Kelfer Built Deluxe II Aluminum Livestock Trailer



7'x20' Gooseneck Livestock
7000# Rubber Torsion Axles, Radial
Tires on White Spokes, Aluminum
Plank Floor, Rubber Floor Mats,
So Much More
\$10,400.00

**CALL FOR MORE INFORMATION
AND COMPLETE LIST OF TRAILERS
IN STOCK**



**Hostetler Truck
Bodies & Trailers**
Rt. 322 Milroy, PA 17063
1-800-441-5161



**HAMILTON
GMC TRUCK**
E. High St/55 Doe Run Rd.
Manheim, PA 17545
(717) 665-2271

**20 1990 MODEL
LIGHT & MEDIUM
DUTY TRUCKS
IN STOCK**

**MEDIUM DUTY'S
FROM \$19,990**

88 GMC Safari Mini Van, 6 Cyl., Auto, SLE, Loaded
88 Chevy K2500 4x4, V8 Auto
88 Ford F150 4x4 V8 Auto Lanat
87 Chevy Astro 8 Pass V6 Auto
87 K20 P/U 4x4 V8 Auto
86 Chevy C10 V8 Auto Silverado
85 Chevy Cargo Van PS, PB
85 Chevy 228 V8 Auto Loaded
85 Chevy K20 4x4 P/U V8 Auto
82 Ford F150, 4x4, V8, PS, PB
(717) 665-2271

1987 Ravens dump trailer, 36 frame, 34 box, 2-way gate, air ride, 11,24.5 rubber, Budd wheels, tarp and bows. (717)354-5796.

1988 Chevrolet 1/2 ton 4x4, extended cab, rust proofed, extended warranty, 5th wheel hitch, excellent condition. \$11,300 (215)756-6011.

1989 Ford F-150 XLT Lariat, 4x4, V8, automatic, air, \$10,900, 814-893-5589.

'88 Chevy Scottsdale 1500, 1/2 ton, 4.3 V6, 5 spd., PS, PB, AM-FM, brown & tan, excellent condition. \$6,950. 717-733-2873

'88 Ford F250, 1/2 ton, 300 EFI, HD, 4 spd., PS, PB, AM-FM, dark blue, \$7,650. 717-733-2873

'89 Dodge B350 cargo van, 318, auto., PB, PS, AM-FM stereo, 26,000 miles, excellent condition, \$8,950. 717-733-2873

'84 Ford 250, 6.9DL pickup, automatic, 64,000 miles. (215)536-8624.

'85 Chevy Scottsdale C10, HD 1/2 ton pickup, 305 auto., PB, PS, AM-FM, 6,100 GVW, 42,000 miles, 1 owner, excellent condition, \$6,950. 717-733-2873

'86 Chevy C20, HD, 1/2 ton, 350, auto., PB, PS, AM-FM, 8,600 GVW, 61,000 miles, charcoal, good condition, \$5,950. 717-733-2873

'87 F250, super cab, 4WD, dually, AM-FM Cass., trailer towing pack, 4 spd., 460 eng., dual tanks, P/S, P/B. Asking \$9,500 (717) 367-0422



1989 FORD XLT LARIAT F250

4x4, Super Cab, 351 EFI, Auto, PS, PB, PW, PDL, Cruise, Tilt, Air, AM-FM Cass. St., Dual Tanks, 8,600 GVW, Michelin Radials, 32000 Mi., Ex. Cond.

\$14,900



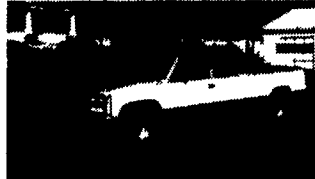
1989 CHEVY 2500
HD 1/2 Ton, 4x4, 350 F.I., Auto, PS, PB, AM-FM Stereo, Limited Slip Rear, 8600 GVW, 9,000 Miles, With Bal. of Factory Warranty
\$13,900



1989 FORD XLT LARIAT F250

250, 4x4, 351 EFI, Auto., PS, PB, PW, PDL, Cruise, Tilt, Air, AM-FM Cass. St., Limited Slip Differential, 410 Ratio, 8,600 GVW, 19,000 Mi., Blue & White, Like New.

\$13,900



1989 GMC SIERRA SLX
1500 Extended Cab, 305 EFI, Auto, PS, PB, Air, AM-FM Cass. St., 6200 GVW, 23,000 Miles, Blue & White, Ex. Cond.

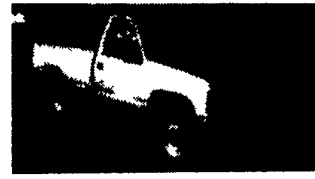
\$11,500



1987 CHEVY HD 1/2 TON

4x4, 350 FI, Auto, PS, PB, AM-FM, Dual Tanks, Lock-Out Hubs, 8600 GVW, 36,000 MI., Ex. Cond.

\$9,950



1988 CHEVY CHEYENNE 1500

1/2 Ton, 4x4, 4.3 Vortec V6 HD, 4 Speed, PS, PB, Blue, 18,000 MI., Like New

\$9,950

A & J AUTO SALES

798 East Main Street - Rt. 322 East
Ephrata, PA 17522
Specializing In Late Model, Low Mileage Trucks
717-733-2873

OVER 60 YEARS IN BUSINESS!

WOLF MOTOR CO.

ROUTES 72 & 283, LANCASTER, PA 17601



**CENTRAL PA'S
FORD TRUCK DEALER**

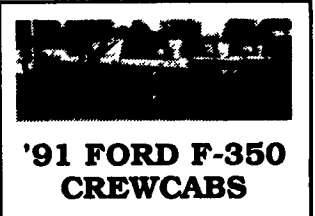


Sales Reps. Ed Boring Nelson Hess Bill Gast Jon Jensen
Dennis Asel, Mgr.

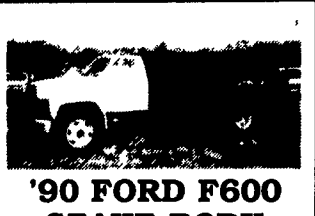
717-299-4331 Toll Free 800-637-6612



**'90 & '91
CARGO VANS**
Choose From 25 In Stock,
Different Packages
Available



**'91 FORD F-350
CREWCABS**
4x4 or 4x2, Diesel or Gas,
Auto. or Stick, Custom or Lariat,
5 To Choose From
From \$16,400*



**'90 FORD F600
STAKE BODY**
20,000 GVW, 370 V8, 5 Spd., 14
Ft. Flatbed w/Lift Gate
\$20,400*

CALL TODAY! WE'RE READY TO DEAL!



**'90 FORD 15 FT.
PARCEL VANS**
2 In Stock
1 - Unicell Van Body
1 - Grumman Van Body
Diesel Or Gas



**'91 FORD
CLT-9000**
425 CAT, 13 Spd., Air Ride,
Air Suspension, Jake Brake,
Loaded!

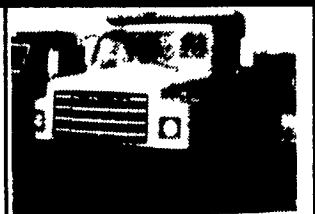


**'90 F-350 4x4
TOTE BED**
460 V8, Gas, 5 Spd., OC, Limited
Slip Rear, HD Front, XL Trim,
Eby Aluminum Trk. Bed.
\$18,990*

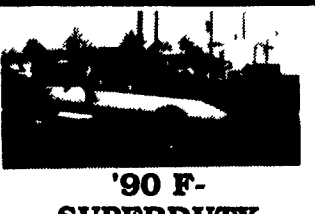
★ ★ ★ DECEMBER TRUCK SPECIALS ★ ★ ★



**'90 F-250
4x4**
351 V8, H.D. Pkg.,
Auto. OD Trans., 8 Ft.
Meyers Snow Plow
\$18,200*



**'80
INTERNATIONAL**
DT466 Engine, 28,000 GVW,
Tan And Brown
\$10,400



**'90 F-
SUPERDUTY**
460 Gas, Auto. OD, XLT,
Loaded, Ideal For Horse
or Cattle Trailer.
SAVE HUNDREDS!

CARGO * Price Includes all applicable rebates **DIESEL**

**Dependable Used Trucks
from Reliable People**



84 IHC 1654 - 14' C&C 6.9L Diesel, 5 Spd., Hyd Brakes, 21,500 GVW, Freshly Painted (White), Extra Nice \$5,500
Nice Selection Of Other C/C's Avail



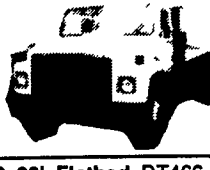
86 KW K100E Double Bunk 3406 Cat, 13 Spd., P/S, A/C, Air Ride Susp., Recent Eng & Trans. Rebuild, Loaded With Extras \$23,000
Other Single & Double Bunk Cab-Overs Ready To Sell Also



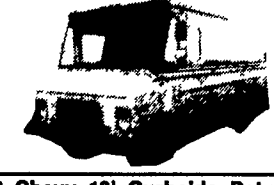
84 Ford LN9000 T.A. Tractor NNTC 300, 9 Spd., P/S, Hendrickson SUsup, Freshly Painted, Real Workhorse \$21,900
Other T.A. Conventionals In Stock.



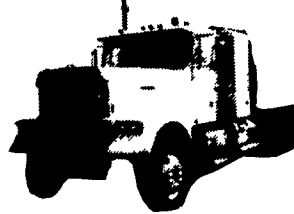
85 IHC 1954 22' Van DT466 (210 H.P.), 5 & 2, P/S, A/C, Air Brakes, Custom Interior, 32,800, Extra Special. \$16,500



85 IHC 20' Flatbed DT466, 5 Spd., Hyd brakes, 25,000 GVW, Freshly Painted \$9,500
83 IHC 24', 33,200 GVW Also Avail.



83 Chevy 13' Curbside Delv. Step Van, 6.2L Diesel, 4 Spd., P/S, Grumman Olsen Alum. Bodies, 10,000 GVW, (2 Selling) \$4,000 Ea.
Several Ford Hi-Cubes Also Available.



84 Frt/Lnr T.A. Conv./Sleeper NTC 350, 9 Spd., P/S, A/C, Very Clean, Reliable Equip \$17,500



85 IHC 2375 S.A. Tractors NTC L10 (240 H.P.), 7 Spd., P/S, A/C, Full Fairings, (3 Avail.) \$15,500 Ea.
85 Ford S.A. Tractor Also Avail.

**MCDONNELL
DOUGLAS TRUCK SERVICES**

FOR MORE INFORMATION
**Call Ray Leed
or Dave Yerger**

**717-569-2648
LANCASTER, PA**