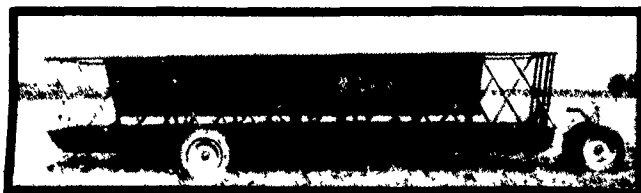


FEEDER WAGONS IN 16', 21', 27' LENGTHS AVAILABLE WITH HOPPER, DOLLY WHEELS, OR SELF-LOCKING HEAD GATES

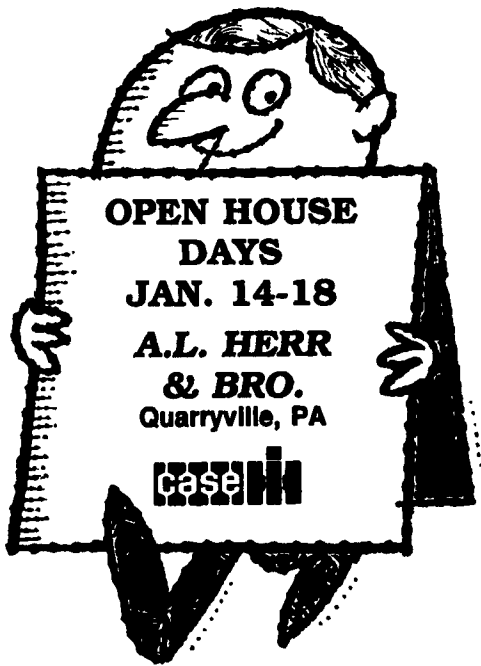


Manufactured By Stoltzfus Manufacturing

R.D. 1 • Honey Brook, PA 19344
Shop: (215) 273-3603 or (215) 273-2136

For More Information Contact:

- | | |
|---|---|
| Derstine Farm Equip.
E. Berlin, PA
717-292-1856 | Siebert Farm Equip.
New Oxford, PA
717-624-8763 |
| Walnut Barn and Dairy Equip.
Port Royal, PA
717-436-8429 | Grumelli Farm Service, Inc.
Quarryville, PA
717-786-7318 |
| Binkley & Hurst Bros. Inc.
Lititz, PA
717-626-4705 | Ralph Greimann
Nicholson, PA
717-222-4432 |



**OPEN HOUSE DAYS
JAN. 14-18
A.L. HERR & BRO.
Quarryville, PA**



843 Bobcat
642B Bobcat
743 Bobcat
1600 Bobcat Articulated Loader

Used Loaders

63 ~~SOLD~~ Cat
L1200 Prime Mover
L554 NH

Used 743 w/New Flat Tires ~~SOLD~~ Wheels, Bad Engine, \$2,800

For More Information Call:
SHEETS BROS.
1061 Carlisle St.
Hanover, Penna.
717-632-3660

ZETOR

Zetor S2110 4WD
13 Hp
\$10,575 Base
Zetor S215 4WD
Cab 13 Hp
\$14,340 Base
Zetor 6245 4WD
5 Hp
\$14,765 Base
Used Tractor
S18 NH Baler

SHEETS BROS.
1061 Carlisle St.
Hanover, Pa.
(717) 632-3660



**SAVE BIG!
YEAR END SALE
DECEMBER 26TH, 27TH AND 28TH**

Best Buys In Used Equipment

TRACTORS

- IH 986D w/cab, 1200 hrs. \$19,500
- IH 4168 4WD w/cab, low hrs. 12,000
- IH 666 Gas 2800 hrs., year-a-round cab, 3 pt. hitch 7,600
- IH 584D, 1500 hrs. 10,700
- IH 884D row crop 9,800
- IH 684D, 3000 Hrs., new clutch T/A 9,500
- Case 1845 uni-loader 7,500
- IH 154 Cub LoBoy w/60" undermount mower 3,200
- F-300 gas 1,000
- F-300 gas coming in
- F-M 850
- F. Cub with 60" mower 2,800
- F. Cub 1 pt., FH, sickle bar mower 3,800
- AC C tricycle reconditioned, like new 1,500
- Sickle bar mower for F. Cub 350
- Cultivator for F-Cub 200

TILLAGE

- IH 700 6x16 auto-reset plow 2,450
- JD 1350 5x16 shifting hitch, semi-mount 2,500
- IH 550 5x18 plow shift hitch 1,350
- IH 510 5x16 plow 1,650
- IH 440, 3 bottom, 18" plow 950
- White #348 3116 3 pt. plow 750
- JD 3x16 3 pt. plow 575
- Brillion chisel plow, 10 ft., 3 pt. hitch, high clearance 1,150
- Dunham trailing plow, 8 ft. high clearance 1,150
- IH #37 transport disk 950

PLANTING

- IH 5100 drill, 18x7 3,650
- IH 58 4-row w/fert. 800
- IH 400 6-row planter 400
- IH 4-row corn planter, double disk parts
- IH 400 air planter make offer

HAY AND FORAGE

- IH 37 baler w/o thrower 850
- IH 47 baler w/o thrower 1,150
- IH 440 baler 1,800
- IH 430 baler w/thrower 2,350
- IH 35 hydraulic drive rake 800
- New Holland 1469 self-prop. mower-cond. 2,300
- IH 1190 mower conditioner, 9 ft. 3,750
- IH 1190 mower conditioner 3,800
- IH 1190 mower cond., 9 ft. 2,200
- Gehl forage harv. w/hay p/u & 2-row corn head make offer
- IH #100, 2 pt. hitch, balanced head, sickle bar mower 275

COMBINES AND HARVESTING

- IH 205 w/13" plat. and corn head parts only
- IH 315 hydro combine w/grain & 2 row corn heads parts only
- Fox #2300 forage harv. w/hay p.u. & corn head 2,800

MISCELLANEOUS

- New Holland #306, tandem axle, 1700 gal. spreader, like new 7,300
- IH 550 spreader w/hydraulic endgate (2 yrs. old) 2,500
- 3 Surge milker unit w/elec. pulsation 300
- IH 2250 loader w/mat. bucket 2,200
- Dunham-Lehr loader 1,200
- Loader for 8N Ford 450
- IH #200, 2 pt. hitch, 8 ft. blade 250

LAWN AND GARDEN

- IH 1772 Cub Cadet, 17 hp diesel w/46" mower, 150 hrs., like new 4800
- IH 1100 Cub Cadet w/mower 1,175
- IH 1200 Cub Cadet 12 HO w/44" mower 1,850
- IH 1100 Cub Cadet w/44" mower 1,175
- 124 Cub Cadet w/mower 950
- 127 Cub Cadet 1,000
- IH 106 Cub Cadet, 10 HP w/mower 1,000
- IH 100 Cub Cadet, 10 HP w/mower 800
- IH 72 Cub Cadet w/mower 775
- 80 Cub Cadet lawn tractor w/mower 650
- Gilson 11 HP w/mower 650
- 42" snow blower 375



Has Your Equipment Had Its Pre-Season Check-Up?

Act now and save time and money. Receive a 10% discount on parts and labor on jobs over \$500 performed in our shop and paid for at completion.

INCH EQUIPMENT CO.

E. Main St. • McAlisterville
(717) 463-2191



ENFIELD EQUIPMENT INC.

720 WHEELER SCHOOL RD
WHITEFORD, MARYLAND 21160
1/2 MILE WEST OF RT 136 ON RT 165
HOURS: MON-FRI 8-5, SAT 8-12

301-452-5252

Material Handling Equipment
301-879-5090

TRACTORS

- JD 4230 Powershift 4 Post Canopy, 20.8-38-Comp-ing Int
- JD 2355, 2WD, 850 Hrs., Excel. Cond.
- JD 950, 2WD, Ag Tires, 630 Hrs.
- JD 850 Tractor, 139 Hrs., 2WD, Turf Tires, PS, Canopy, Excel. Cond.
- JD 40, Wide Front, 3PT Hitch, PTO, \$# 64679
- Farmall 450 Tricycle, Average Shape
- Farmall 560 Tricycle, Fair Shape
- MF 165, Diesel, New Brakes & Clutch w/Kelley Loader
- Ford 1500, Diesel w/Fall Mower, 434 Hrs., 2WD, Turf Tires

HAY EQUIPMENT

- JD 1327 Disc Mower Conditioner, Very Good Cond.
- JD 1219 Mower Conditioner, Non-Clog Guards, Very Good
- JD 1209 Mower Conditioner, Priced To Sell
- NH 279 Cutditcher, 540 PTO
- NH 411 Discbine, Rolls Good, Hyd. Tongue Pos., Hyd. Header Tilt
- NH 268 Baler w/Ejector
- NH 890 Forage Harvester w/5/8 Pickup & 2 Row Wide
- NH 717 w/Low Profile 1 Row Corn Head 5' Hay Pickup & Direct Cut Hay Head
- NH 489 Mower Conditioner, Good Cond.

PLANTERS

- AC 333 4 Row, Air Champ., Dry Fertilizer
- AC 600 4 Row, Plate Planter, Dry Fertilizer, Fair Shape
- AC 600 9 Row, Plate Planter, 9 Row Monitor, Liquid Tanks

SPREADERS

- JD 680 Web Spreader, Tandem Axle, End Gate, Very Good
- NH 214 Web Spreader, Single Axle, End Gate

COMBINES

- JD 3300, Gas Combine w/10' Platform
- JD 4425, 400 Hrs., Also Loaded W/Wh Features, Has A New Factory Warranty, Call Today!
- JD 215, Flex Head, Black Reel
- JD 244 Corn Heads