

Virginia Weekly
Richmond, Va.

Thursday, December 6, 1990
WEEKLY REVIEW IN VIRGINIA MARKETS IN REVIEW; NOV. 29-DEC 5, 1990. FEEDER STEERS AND HEIFERS IN VIRGINIA WERE MOSTLY \$1.50 TO \$5.00 HIGHER AS MIDWEST PRICES WERE \$1.00-2.50 HIGHER. SLAUGHTER STEERS AND HEIFERS IN VIRGINIA WERE \$.50-2.75 LOWER AS MIDWEST PRICES WERE MOSTLY \$1.00-1.50 LOWER. COWS AND BULLS IN VIRGINIA WERE MIXED WITH COWS \$.25-1.50 HIGHER AND BULLS \$3.75 LOWER. MIDWEST PRICES WERE STEADY TO \$1.50 LOWER ON COWS AND BULLS. BEEF PRODUCTION WAS 8% ABOVE A WEEK AGO BUT 10% BELOW A

YEAR AGO. AVERAGE DRESSED WEIGHTS WERE 4 POUND HEAVIER THAN A YEAR AGO. LAMB PRICES IN VIRGINIA WERE STEADY TO \$2.50 LOWER AS MIDWEST PRICES WERE STEADY TO \$1.00 LOWER. LAMB PRODUCTION WAS 20% ABOVE A WEEK AGO AND 11% BELOW A YEAR AGO. AVERAGE DRESSED WEIGHTS WERE 3 POUNDS LIGHTER THAN A YEAR AGO. SLAUGHTER HOG PRICES IN VIRGINIA WERE \$.50 LOWER AS MIDWEST PRICES WERE \$1.00 LOWER. FRESH PORK PRICES WERE \$.50 TO \$6.50 LOWER EXCEPT HAMS WERE \$4.00 HIGHER. HOG PRODUCTION WAS 24% ABOVE A WEEK AGO AND 4% BELOW A YEAR AGO. AVERAGE DRESSED WEIGHTS WERE 1 POUND

HEAVIER THAN A YEAR AGO. THE VIRGINIA DIRECT HOG MARKET NOV. 29-DEC 6, 1990 RECEIPTS FOR THE DIRECT HOG MARKET IN VIRGINIA FOR THE PERIOD TOTALED 3,496 HEAD COMPARED TO LAST WEEK 2,936 HEAD. THE SOUTHEAST VIRGINIA HOG MARKET CLOSED \$.50 LOWER COMPARED TO LAST WEDNESDAY'S TRADING WITH BARROWS AND GILTS: COUNTRY POINTS LOCAL PLANT DELIVERED (30 MILE RADIUS) US 1-3 220-240 LBS 45.50-45.75 46.50-47.00 US 3-4 220-240 LBS 45.00-46.00 US 1-3 200-220 LBS 41.00-44.00 US 2-4 250-270 LBS 41.00-44.00 US 3-4 270-300 LBS 38.00-39.00 SOWS \$36.00-42.90 AND BOARS \$28.00-34.00 VALLEY AND NORTHERN VIRGINIA HOGS; 687 HEAD FOR THE PERIOD. US 1-3 210-250 LBS \$44.55-45.25. SLAUGHTER STEERS AND HEIFERS 1%; SLAUGHTER COWS 18% SLAUGHTER BULLS 2%, SLAUGHTER CALVES AND VEALERS 0%; FEEDER CATTLE UNDER 600 LBS 59%, OVER 600 LBS 20%. PRICE RANGES FOR VIRGINIA WEEKLY AUCTIONS. SLAUGHTER CATTLE STEERS; CHOICE 2-3 1100 LBS & OVER 75.00-79.75 HEIFERS; CHOICE 2-3 1100 LBS & OVER --- SLAUGHTER COWS UTILITY & COMMERCIAL COWS 42.00-55.25 SLAUGHTER BULLS - 1-2 900-1300 LBS 50.00-64.00 1-2 1300-1600 LBS 52.00-65.00 1-2 1600 LBS & OVER 52.00-65.25 SLAUGHTER CALVES AND VEALERS VEALERS - HIGH CHOICE & PRIME 100-250 LBS --- GOOD AND CHOICE 100-250 LBS --- CALVES - GOOD AND CHOICE 250-500 LBS --- SLAUGHTER LAMBS HIGH CHOICE & PRIME 95-125 LBS WOOL 41.50-47.50 SLAUGHTER HOGS US 1-3 200-250 LBS 45.00-48.00, FEW 50.00-54.00*** **FEW LOTS RETURNED FOR HOME SLAUGHTER.** SOWS US 1-3 300-500 LBS 37.80-43.00 500 LBS & OVER 40.00-47.00.

FEEDER CATTLE STEERS; MEDIUM 1 HEIFERS: MEDIUM 1 200-300 LBS 94.00-118.00 300-400 LBS 80.00-98.00 300-400 90.00-115.00 400-500 75.00-91.00 400-500 88.00-107.00 500-600 72.00-85.00 500-600 82.00-97.00 600-700 69.00-83.00 600-700 78.00-91.00 700-800 68.50-78.00 700-800 74.50-87.50 800-900 --- 800-900 74.00-83.75.

BULLS MEDIUM 1 LARGE 1 SMALL 1 MED & LARGE 2 300-400 79.00- 88.50 --- 400-500 79.50- 82.50 --- 79.00- 91.00 500-600 66.00- 79.50 --- 64.50- 80.50 600-700 62.00- 63.00 --- 65.00- 78.00.

Northern Virginia Livestock Summary
Marshall, Va.

Tuesday, December 4, 1990
SLAUGHTER STEERS & HEIFERS 41 HEAD STEERS CHOICE 2-3, 1000-1150 LB. 78.00 CHOICE 2-3, 1150-1300 LB. 75.00 - 80.00 SELECT 2-3, 900-1100 LB. 74.80 - 78.00 SELECT 2-3, 1100 LBS. & OVER 74.25 - 78.50 HOLSTEIN STEERS SELECT 1-2, 1100-1500 LB. 67.00 HEIFERS CHOICE 2-3, 900-1100 LB. 75.75 - 77.25.

SLAUGHTER COWS 138 HEAD COWS CUTTER & BONING UT. 1-3 45.00 - 53.50 BREAKING UT. & COMM. 2-4 47.00 - 55.25 CANNER AND LOW CUTTER 1-2 40.00 - 48.75 SLAUGHTER BULLS 16 HEAD BULLS Y.G 1-2, 900-1300 LB. 50.00 - 64.00 Y.G. 1-2, 1300-1600 LB. 52.00 - 61.75 Y.G. 1-2, 1600 LBS & OVER 53.25 - 60.50.

COWS RETURNED TO FARMS 17 HEAD M-1, 3-6 YRS OLD 950-1100 LBS \$600.00-680.00
BABY CALVES RETURNED TO FARMS 4 HEAD NEWBORN TO 4 WKS OLD 125.00 100 LBS & OVER BY CWT 77.50-100.00

FEEDER CATTLE 340 HEAD STEERS MEDIUM 1 LARGE 1 SMALL 1 MED & 1 LARGE 2 300-400 92.00- 94.00 - 82.00- 89.00 - 400-500 90.50- 94.00 92.00 - - 500-600 83.00- 86.00 - 82.50 - 600-700 82.75 - - - 700-800 81.50 - - - 800-900 77.50 82.25

HOLSTEIN STEER MED & LARGE 2 1100 & OVER 56.50
HEIFERS MEDIUM 1 LARGE 1 SMALL 1 MED & LARGE 2 300-400 83.50- 70.00- 77.00 - 400-500 88.00 88.00 73.00- 76.00 - 500-600 70.50- 76.00 78.00 68.50 - 600-700 71.50

BULLS MEDIUM 1 LARGE 1 SMALL 1 MED & LARGE 2 300-400 100.00 - 77.00- 84.00 - 400-500 76.50- 80.00 - - - 500-600 76.25- 77.00 - 71.50 - 600-700 68.00- 76.50.

Central & Southeast Virginia Livestock Summary

Smithfield Blackstone
Southside, Va.

Wednesday, December 5, 1990

SLAUGHTER HOGS 190 HEAD SLAUGHTER SOWS 1.25-4.00 LOWER SOWS US 1-3, 300-500 LB. 37.80 US 1-3, 500 LBS. & OVER 40.00 - 40.80 BOARS 300-600 LB. 35.50 - 38.10.

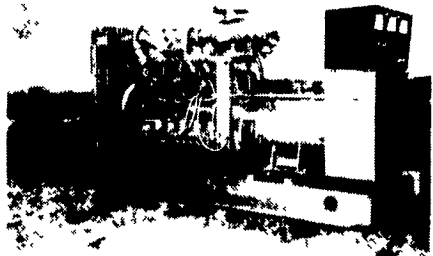
SLAUGHTER CATTLE 101 HEAD SLAUGHTER COWS STEADY SLAUGHTER STEERS & HEIFERS 10 HEAD STEERS SELECT 2-3, 900-1100 LB. 70.00 - 71.50 HEIFERS CHOICE 2-3, 900-1100 LB 69.50 - 72.25 SLAUGHTER COWS 80 HEAD COWS CUTTER & BONING UT. 1-3 44.00 - 52.25 BREAKING UT. & COMM 2-4 44.00 - 50.25 CANNER AND LOW CUTTER 1-2 36.00 - 44.00 SLAUGHTER BULLS 11 HEAD BULLS Y.G 1-2, 900-1300 LB 55.00 - 65.00 Y.G. 1-2, 1300-1600 LB 52.50 - 56.00 Y.G. 1-2, 1600 LBS & OVER 62.00 - 64.00

BABY CALVES RETURNED TO FARMS 16 HEAD NEWBORN TO 4 WKS OLD 25.00-77.50, MOSTLY 40.00-60.00

FEEDER CATTLE 229 HEAD STEERS MEDIUM 1 LARGE 1 SMALL 1 MED & LARGE 2 300-400 98.00 - - 87.00- 90.00 400-500 93.50 - 86.00- 88.00 89.00 500-600 90.00 - - 600-700 82.00 - - 72.50 700-800 78.00- 80.00

HOLSTEIN STEER MED & LARGE 2 300- 500 71.50.

HEIFERS MEDIUM 1 LARGE 1 SMALL 1 MED & LARGE 2 300-400 82.50 - - 78.00 400-500 76.00- 78.00 - 65.00- 66.00 72.50- 76.00 500-600 75.00- 76.00 - - 63.00 600-700 - - - 55.00- 66.00.



GENERATORS

Sales ★ Service ★ Rentals
★ Complete Generator Systems
★ PTO ★ Portables ★ 2-1600 KW
"We Service It If You Have It
And Sell It If You Need It"

34 W. Mohler Church Rd.
Ephrata, PA 17522

Tel: 717-738-0300
Fax: 717-738-4329

CRIPPLED AND DISABLED COWS, STEERS & BULLS

Slaughter Under USDA Inspection

FREE CALL

1-800-234-COWS (2697)

215-286-9400

Wayne Taylor

Lebanon, Berks,
Lancaster & Chester Co.

MULVANEY LIVESTOCK SERVICES



Tom Mulvaney, Jr.
Easton, PA
(215) 258-1670

OFFERING: Order Buying, Livestock Trucking To Leesport Sale In PA & Hackettstown Sale In NJ.

TOP PRICES FOR DOWN & DISABLED CATTLE, Paid On Dressed Weight At Competitive Prices.

Also - Fat Cattle, Bulls and Steers.

NOW AVAILABLE! - Removal of Dead Cattle & Horses
(Subject To Charge Based On Area)
PRESENTLY HANDLING THE FOLLOWING COUNTIES:
PA-Northampton, Lehigh, Bucks, Monroe, Part Of Berks, Carbon and Schuylkill. NJ- Warren, Hunterdon, Sussex
Call (215) 258-1670

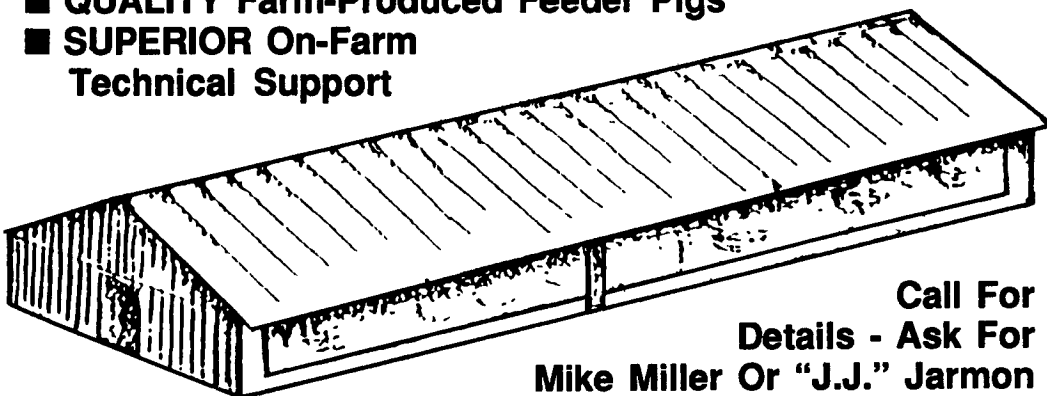


HOG CONTRACTS AVAILABLE!

An Opportunity For People Who Are Capable Of
Managing A New 1,000-2,000 Head Finishing Facility

BENEFITS INCLUDE:

- POSITIVE Cash Flow & Depreciation Write-Offs
- MINIMAL Labor & Flexible Hours
- QUALITY Farm-Produced Feeder Pigs
- SUPERIOR On-Farm Technical Support



Call For
Details - Ask For
Mike Miller Or "J.J." Jarmon

1-800-468-5524

(717) 367-1525

419 West High St., Elizabethtown, PA 17022

Farm Crest Feeds

Contracts Being Offered For...

New Farrow To Finish Units
Preferrably 300-500 Sows. Also Interested
In New And Existing Finishing Floor
To Be Run "All-In-All Out"

We Supply

- Cash Flow Information
- Professional Service Personnel
- Quality Genetics
- Producer Incentive Programs

Become a part of our Planned Growth!
Call now to discuss this opportunity!

717-626-0331

or

1-800-432-3040