

## Warren DHIA Meets

(Continued from Page A21)

The top protein herds with average production were: Floyd Beardsley 675; Maple Place Farm 665; Richard Harrington 661; Gladon Farms 645; Barry Van Ord 638; Twin States Farm Inc. 629; Gary Stoddard 620; Raymond

Lawson 614; Doug & Diane Hastings 609; Jeff Lindell 606; and Willard Hitchcock Farm 600.

High Herds in butterfat production with average were: Floyd Beardsley 788; Maple Place Farm 744; Richard Harrington 751; Gladon Farms 734; Barry Van Ord 704; Twin States Farm Inc. 740;

Gary Stoddard 703; and Edge Grove Farm 704.

Several Warren County 4-H youth were honored at the annual meeting.

Julie Stoddard of Sugar Grove was selected as the Distinguished Junior Holstein Club winner. Runnerup was Paula Brown of Lottsville.

The 4-H dairy judging team was recognized for its accomplishments at state and regional events. Team members were Tim Ludwick, Belmer Hitchcock, Ron Riedel, and Ryan Riedel. Also recognized for their dairy judging participation were Sarah Donaldson, Mandy Hitchcock, Kristen Hitchcock, Candy Hitchcock, and Travis Hitchcock.

Junior dairy show winners from this year's Warren County Fair were presented tote bags courtesy of the Warren County Holstein Club. The winners included: Chris Vanco, Tom Brown, Ron Riedel, Tim Ludwick, Ryan Riedel, Belmer Hitchcock, Jared Lindell, Matthew Wilcox, Travis Hitchcock, and Melissa Wilcox.



From the left, Wayne Gruber presents an award to Jim Cowden of Gladon Farms for having the highest producing cow for protein and butterfat in Warren County.



## Program Provides Low-Interest Loans

**HARRISBURG (Dauphin Co.)** — Farmers interested in obtaining a loan through the state's Agricultural Technology Loan Program should be aware that the application deadline is December 31, according to Senator Noah Wenger (R-36).

Wenger said the program provides low-interest loans to farmers who want to invest in new technology, but are unable to get credit at reasonable rates elsewhere without a matching loan.

The program guidelines are fairly general, but money must be

used to improve productivity or develop new markets. For example, projects funded in the last round of grants included the purchase of computerized feeding equipment and new irrigation equipment.

The senator added that loans of up to \$50,000 are available for terms of no more than seven years.

Interested farmers should contact Christian Herr at the state Department of Agriculture's Bureau of Agricultural Development. The telephone number is (717) 783-8460.

## Health Hazards Seminar

**NEWARK, Del.** — Farming is still one of this country's most hazardous occupations says Ron Jester, University of Delaware Cooperative Extension safety specialist.

The Extension systems of the Universities of Delaware and Maryland, local agribusiness and the American Lung Association of Maryland have scheduled an agricultural health hazards program for the farm community. Slated

for Thursday, December 13, from 9 a.m. to 2:45 p.m., the program will be held at the 4-H park in Williston, Md.

Topics to be covered include respiratory hazards on the farm, traumatic farm injuries, an update on protective equipment, how to react in a medical emergency and skin cancer prevention and protection. Attendees also will have the opportunity to visit exhibits of farm safety equipment.

**SPECIAL PRICES NOW THRU DECEMBER 29th!**



The Best In The Industry!

**END OF YEAR**

# CLEARANCE SALE

**NEW & USED EQUIP.**  
All Items In Stock

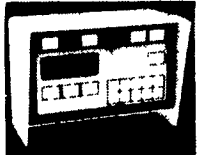
**Financing Available!**

### ELECTRONIC SCALE SYSTEMS



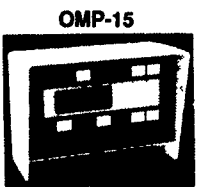
**OMP-5**

- Universal/animal scale Platform scales
- Bins, hoppers and other storage facilities
- Cattle feeding mixers



**OMP-10**

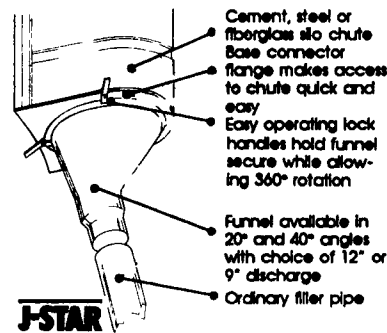
- Cattle feeding mixers
- Insulated batch weighing



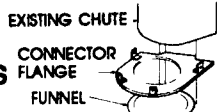
**OMP-15**

**We Will Demonstrate**

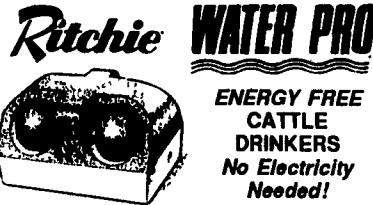
- Platform and universal/animal scales
- Manual batching procedures
- Weighing situations where the accumulating feature has an application
- Printer options for batch or other applications
- Remote option for remote display



**J-STAR FIBERGLASS FUNNEL**



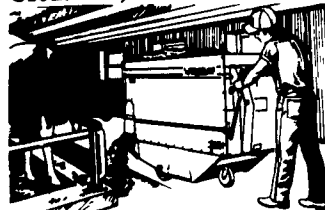
**Dynavent 11 HP PAPER SHREDDER**



**Ritchie WATER PRO ENERGY FREE CATTLE DRINKERS No Electricity Needed!**

### WEAVERLINE FEED CARTS New & Used

Used: 430, 424 & 323 Carts



★ SPECIAL OF THE MONTH ★  
USED 3350 MANURE TANKER -\$6,825

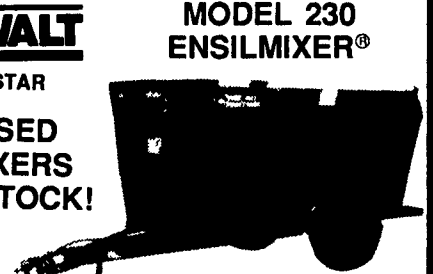
### LIQUI-STOR™ SYSTEM Side Mount Manure Pump

Power & Capacity That Will Earn Your Confidence!



### OSWALT By J-STAR

USED MIXERS IN STOCK!



**MODEL 230 ENSILMIXER®**

**J-STAR UNIVERSAL ANIMAL SCALE**  
7 Ft. Long Platform Can Be Customized To Any Width Up To 4 Ft. Between Channels  
Economy, Precision & Versatility To Meet Your Management Needs

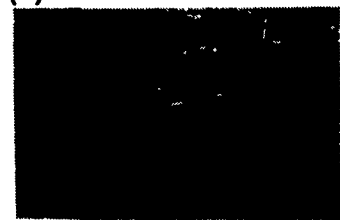
**FOR SALE - 1 DEMO IN STOCK!**

### FOR SALE RENTAL MANURE EQUIPMENT

#### TRAIL 'R PUMP®



#### (3) VERTICAL PUMP®s



(3) PROP AGITATOR®s-2 Models: The Trail'R Prop & 3 Pt. Prop

Call For Free Demonstrations!

**J-STAR SCALE SYSTEMS**

7'x10' Weighing Platform Easily Handles Tandem Axles

Field Proven Reliability & Accuracy At An Affordable Price

**J-STAR MANURE TRANSFER PISTON PUMPS**

1 Used Blue-Oxx™ In Stock

The Industry Leaders... With Higher Capacity, Heavier Construction And Longer Life

**YOU WON'T BEAT OUR PRICES & SERVICE**



## LAPP'S BARN EQUIPMENT

5935 Old Philadelphia Pike  
Gap, PA 17527  
(717) 442-8134



## WALNUT BARN & DAIRY EQUIPMENT

RD 2 Box 737

(717) 436-9429

Port Royal, PA 17082