

# Alliance Appoints Brubaker To CAC

LITITZ (Lancaster Co.) — On November 17, Michael W. Brubaker was appointed to the Citizens Advisory Committee by the board of directors of the Alliance for the Chesapeake Bay.

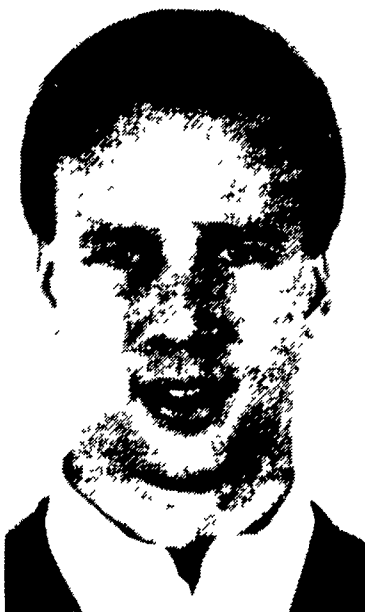
The primary responsibility of the Citizen Advisory Committee (CAC) is to review state and federal bay programs and assess their contribution to achieving the goals of the restoration effort. The committee membership includes representatives from each of the watershed jurisdictions.

The committee helped to shape many of the commitment strategies developed in 1988 and continues to track implementation of these plans through the review of workplans and budgets at its quarterly meetings.

Activities of the CAC in 1989 included representation on the

"blue ribbon" toxics panel, co-sponsorship of the Alliance conference on growth and development, and analysis and comment on the first three fisheries management plans developed under the Bay Agreement. The citizens' panel also gave considerable attention the past year to the role of federal agencies in the bay cleanup effort.

Michael owns an agricultural and environmental consulting firm, which he founded in 1978, B.A.C.S., Inc. helps farmers increase crop production and farm profitability; monitors more than 200,000 acres of farmland under contract in Pennsylvania, Maryland, Delaware and New Jersey; conducts independent contract research; and works with local, state and federal soil conservation services.



Michael Brubaker

# Slack Is Miss Charolais

KANSAS CITY, Mo. — Thea Slack of Kinnear, Wyo., recently was selected to serve as the 1990-1991 Miss Charolais USA. As queen, Slack will be the Charolais ambassador at livestock shows, sales, and other beef industry events throughout the United States and Canada.

Slack, the 20-year-old daughter of Terry and Patty Slack, has lived on a purebred Charolais ranch her entire life. She owns a purebred Charolais herd of 38 cows. Slack has been active in 4-H, FFA, sports, and numerous other extracurricular activities. Highlights of her participation include placing third at the National 4-H Livestock Judging Contest, traveling to Germany and Japan through FFA programs, and serving as Wyoming state FFA president in



Thea Slack

1989-1990.

Currently a sophomore at Laramie County Community College in Cheyenne, Wyo., Slack is majoring in international agriculture. She plans to finish her education at Cornell University.

## New M-F 300 Series Hiline Cab Tractors

# "I thought cabs were a luxury. Now I know better."

When he stopped in at his M-F dealer last month to price a new utility tractor, Joe Bunson got a big surprise. His favorite tractors — the M-F 300 Series — now came with a cab option.



Joe Bunson

"I'm a very practical person...just ask my wife. That's why I like the M-F 300 Series tractors so much. But I just never figured a cab was all that necessary.

"I do now. That M-F Hiline cab really changed my mind.

"For starters, it's tight and quiet... it really fits the tractor to a tee.

"Visibility's good, too, even at night. I can aim the work lights right where I need them. That plus the dual-level heating and air conditioning lets me keep going long after dark without coming home totally beat.



"Of course as much as I like the Hiline cab, I wouldn't have bought it if it was on any other tractor.

"My dealer says more farmers bought M-F tractors last year than any other make...one out of every five tractors sold in the Western World.

"Doesn't surprise me any. Those Perkins engines are just amazing. Lots of low-end torque, and they're still more economical and reliable than anything else I've seen.

"And my neighbors can't figure out how I get such a smooth job of plowing. I tell them it's just skill...but really it's the Ferguson hydraulics.

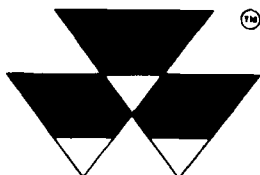
"Yes, sir. Getting that new M-F 390T with the Hiline cab is probably the most practical thing I've done. You ought to go get one for yourself."

### M-F 300 Series Hiline Cab Tractors

MODEL	HP*
M-F 375	60
M-F 390	70
M-F 390T	80
M-F 398	80
M-F 399	90

\*Manufacturer's rated PTO horsepower. All models available with 2 or 4-wheel drive. Some can be equipped for Wide Row Crop or Low Profile applications.

THE ONE TO SEE.



MASSEY-FERGUSON

### See Your Local Dealer

ARNETT'S GARAGE  
Rt. 9 Box 125  
Hagerstown, MD 21740  
(301) 733-0515

M.M. WEAVER & SON  
N. Groffdale Rd.  
Leola, PA 17540  
(717) 656-2321

SCHREFFLER EQUIPMENT  
Pitman, PA 17964  
(717) 648-1120

PEOPLE'S SALES & SERVICE  
Oakland Mills, PA 17076  
(717) 463-2735

TRIPLE H EQUIPMENT  
Peach Bottom, PA 17563  
(717) 548-3775

LEBANON VALLEY IMPLEMENT CO.  
700 E. Linden St.  
Richland, PA 17087  
(717) 866-7518

N.H. FLICKER & SONS, INC.  
Maxatawny, PA 19536  
(215) 683-7252

R.W. KELLER SALES  
Perkasie, PA 18944  
(215) 257-0101

S.G. LEWIS AND SON  
West Grove, PA 19390  
(215) 869-9440  
869-2214

CTF SALES & SERVICE, INC.  
Comly's Turf Farm, Inc.  
Forest Grove Rd.  
Wycombe, PA 18980  
(215) 598-7157

GUS FARM EQUIPMENT  
Seven Valleys, PA 17360-0085  
(717) 428-1967

## MILK. IT DOES A BODY GOOD.



MIDDLE ATLANTIC MILK MARKETING ASSOCIATION, INC.

Tractors Mfg.'s 1 Year Warranty **Belarus**

Barn Equip.	MODEL	HP	CASH
	250	31	\$5,395
	T25 Backhoe Loader	31	\$16,922
	400 AN	57	\$9,848
	T42 4WD Backhoe Loader	57	\$22,975
	420 AN 4WD	57	\$11,495
	505	70	\$10,995
	525A 4WD	70	\$12,825
BERG	562 4WD w/Cab	70	\$13,479
BUTLER	572 4WD w/Cab	70	\$13,975
FARMWAY	820 4WD	85	\$14,895
FIBERDOME	822 4WD w/Cab	85	\$16,222
J-STAR	922 4WD w/Cab	100	\$23,142
JAMESWAY	Engine For Air Skid Loader	31	\$3,650
STARLINE	Plant Placement Cooled Power	57	\$4,995
	Toy Tractor 1/43 Scale		\$15.95

ROVENDALE SUPPLY  
Exit 31, I-80 to I-180  
to Watertown Exit (You Are There!)  
Ph. 717-538-5321 or 742-7521  
Toll Free PA 1-800-232-DALE

M-F 8-7  
Sat 8-5  
Open  
Holidays

Serving you . . .



John Kenamond

Your . . .



## Area Manager

For the best in personalized livestock feeding programs . . .

Ph. 717-966-0637