

# WENGERS FARM MACHINERY, INC.

ROUTE 501 - 1 MILE SOUTH OF MYERSTOWN PA.

717-866-2135 1-800-451-5240

Mailing Address: 251 S. Race St.  
Myerstown, PA 17067



HOURS:  
MON.-FRI. 7:30-5  
SAT. 7:30-NOON



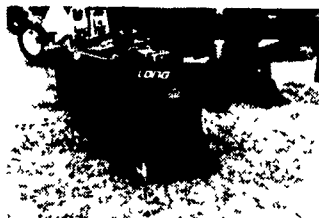
John Deere 8450- 4x18" 3 Pt. Rollover.



International 720- 5x16" Spring Reset With Spring Coulters.



New Idea 272 Cut-Ditcher, 7' Cut, Good Condition.



NEW! Long Nu-Way Swing Plow Available in 3, 4 & 5 Bottoms.



White 508- 4x18" Spring Reset Plows With Spring Coulters.



International 186 Hydro-Cab, Air New 18.4x38's, 2 Remotes, Loader Available, Very Nice.



John Deere 845- 3x16" Rollover



United Farm Tools- 14' Stalk Chopper.



John Deere 3 Pt. 3x16" Plow With Coulters And Coverboards.



International 710- 3x16" Spring Reset Plows With Spring Coulters.



Massey Ferguson 880- 6x18" Spring Reset With Coulters.



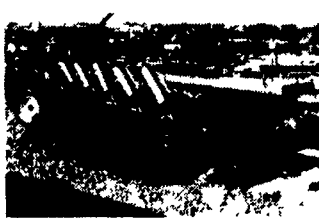
John Deere 1710- 10' Mulch Tiller New Discs And Chisel Spikes.



International 826- 1970, Year-A-Round Cab, 18.4x34 Dyna Torques- 90%, FH, 2 Remotes, Very Clean.



Richardton 1200 Hi-Lift Dump Wagon.



International 710- 5x16" Spring Reset Plows With Spring Coulters.

## FARM TRACTORS

### JOHN DEERE

- 1979- 4440 Cab, Air, Quad Range
- 1974- 4430 Cab, Quad Range
- 1974- 4430 Quad Range
- 1985- 850- 4WD w/#75 Loader
- 1969- 4520 Cab, 1000 PTO
- 2010- Gas-WF

### INTERNATIONAL

- 1980- 186 Hydro Cab, Air- Ldr. Avail.
- 784 4WD w/Loader
- 1976- 986, Cab, Air
- 1978- 84 Hydro, Loader Available
- 1256 With Duals
- 1980- 686 15.5x38's.....\$6900
- 574 Diesel.....\$5900
- 140 With 5' Woods Belly Mower, Good Condition.....\$4900
- 140 HI Clear With Side Dressers, Good Condition.....\$4900
- 140 Fast Hitch, Very Nice Condition, 1X Plow & Snowblade & Cult., Available.....\$4900
- 1978- 184 Cub Lo-Boy With Loader And Woods L-59 Belly Mower.....\$4250
- (2) Super A.....\$3900
- Cub Yellow & White With 1000 Loader.....\$3500
- 460 Diesel, WF.....\$3250
- 185 Cub Lo Boy With 5' Belly Mower.....\$3250
- 2424 w/Sickle Mower.....\$2900

### LONG

- New 2360, 4WD, 35 HP
- New 2460, 4 WD w/Loader 42 HP
- New 2510, 4WD, 48 HP
- New 2610, 4WD, 64 HP
- New 610 w/Loader, 64 HP
- New 610, 4WD w/Loader, 64 HP
- New 510, 4WD, 48 HP
- New (2) 460, 4WD, 42 HP
- New 360, 4WD w/Loader, 35 HP
- New (2) 360, 2WD, 35 HP
- New (4) 310, 4WD, 28 HP

### OLIVER

- 1972- 1855, 18.4x38's.....\$6900
- 1950- GM Diesel, 18.4x34's, Rear Wheel Weights.....\$6500

### OLIVER

- 1961- 1900 GM Diesel, 18.4x34's Rear Wheel Weights.....\$4500
- 1963- 1800 Gas, NF, 18.4x34's, Front Weights.....\$3900

### ALLIS CHALMERS

- 1970- 220 Cab, Front Weights
- 1971- 185, 18.4x28's, 2 Remotes, Front & Rear Weights.....\$7900
- 1964- 190XT, 18.4x34's, 2 Remotes.....\$4900

### FORD

- 1988- 5900 16.9x30's, 2 Remotes, Under 100 Hrs., Like New
- 7000 Diesel, New Tires
- 5000 Diesel
- 3000 4WD, 13.6x28's, 7.5x20's, 3 Pt., PTO.....\$6900
- 2000, 4 Cyl., Gas, 12.4x28's, 3 Pt., PTO, 1400 Hrs., Very Clean....\$4900

### MASSEY FERGUSON

- 178 Diesel, 13.6x36's, 948 Hrs.....\$7900
- 1965- 165 Gas, 16.9x28's, Multipower, 2 Remotes.....\$5500

### CASE

- 1967- 1030-Cab.....\$6900
- 1968- 1030 Cab, 18.4x34's, Rear Wheel Weights.....\$5900

### SKID STEER LOADERS

- 1983- Case 1835B, Gas.....\$8900
- 1978- Case 1845 Gas, New Tires.....\$7900

### OTHER NAME BRANDS

- Jacobsen F-10, 7 Gang Mower

## TILLAGE

- JD 1450- 6x18" Trip
- JD 2500- 5x16" Spring Reset
- JD 8450- 4x18" Rollover 3 Pt. Plow
- IH 550- 5X- 14" Cushion Trip
- IH 710- 5X- 16" Spring Reset
- IH 710- 3X- 16" Spring Reset
- IH 720- 5X- 18" Spring Reset
- JD 1450- 4X- 16" Cushion Trip
- White 348 4x16 3 Pt. Plow
- White 508 4x16" Spring Reset
- Oliver 508 3x16 Spring Reset
- MF 880 6X- 18" Spring Reset
- IH 540- 4X Cushion Trip
- JD 3X Rollover Plow
- Ford 3X Rollover Plow
- (3) JD 3X 3 Pt. Plows
- JD 4x14- 3 Pt. Plow
- Ford 3X Plow
- Oliver 2X Rollover
- MF- 3X 14- 3 Pt. Plow
- IH 2X And 3X Trailer Plows
- JD 3X Trailer Plow
- 2X And 1X Plows
- Glenco 14 Shank- 3 Pt. Chisel Plow
- JD 12 Shank Pull Chisel Plow
- IH 12 Shank- Pull Chisel Plow
- IH 10 Shank Pull Chisel Plow
- Taylorway 10' Chisel Plow w/Coulters Nice
- JD 1710- 10' Mulch Tiller
- MF 9 Shank Chisel Plow 3 Pt.
- Pico 9 Shank, 3 Pt. Chisel Plow
- Paulk- 7 Shank Chisel Plow
- Taylorway 7 Shank 3 Pt. Chisel Plow
- Brillion 7 Shank 3 Pt. Chisel Plow
- Buster Bars 7', 12' & 20'
- Krause 21' Wing Disc
- Krause- 11' Disc
- IH 370- 12' Finishing Disc
- JD 13' Disc
- JD 310- 14' Disc
- Bush Hog 10' Offset Disc- Coming In
- JD 8' Offset Disc
- AC 8' Wheel Discs
- IH 37- 13' Wheel Disc
- IH 5'- 1 Pt. Disc
- JD C11- 12' or 15'- 3 Pt. Field Cult.
- Glenco 10' Or 13'- 3 Pt. Field Cult.
- JD RM6- 3 Pt. Cult.
- JD RG-6- 3 Pt. Cult.
- JD RM- 438 3 Pt. Cult.
- Super A Cult.
- JD- 14' Pull Type Rotary Hoe
- King Kutter 50" Rototiller
- JD 10'-12' Cultipacker
- Bearcat- 12' Cultipacker- New
- Brillion 14' Crowfoot Cultipacker
- Brillion 11'-13' Cultipacker
- IH 12' Cultimulcher

## HAY EQUIPMENT

- JD 3960 Harvester w/2 RN Cornhead
- (2) NH 846 Round Balers
- Deutz-Allis- SM-70RC Discbine
- (2) NI 279 Cutditchers
- (2) Bale Wagons
- JD 450 7' Pull Sickle Mower
- IH Pull Type Sickle Mower
- NH 707 Harvester w/Corn Head
- Peques Hay Tedder- New 710 PTO
- NH 258 Hay Rake- Nice
- JD Hay Rake
- NI 272 Cutditcher
- NH 487 Haybine
- Gehl Forage Wagon 3 Beater w/Roof
- NH 450- 3 Pt. Sickle Mower
- NH 451- 3 Pt. Sickle Mower
- JD 336 Baler w/Ejector

## NEW EQUIPMENT

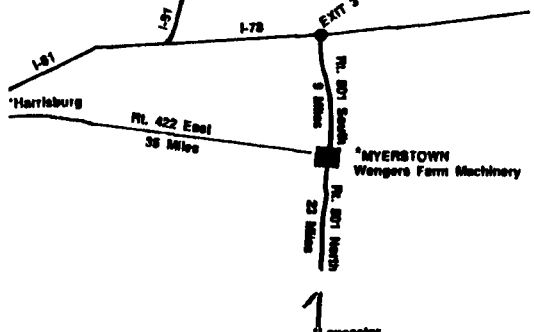
- King Kutter Scraper Blades 6' And 7' Heavy Duty 7' And 8'
- King Kutter Scraper Blades 6', 7' And 8'
- King Kutter Post Hole Diggers 6", 9" and 12" Augers
- King Kutter Discs 5 1/2' And 6 1/2' - 3 Pt.
- King Kutter Grading Boxes 4', 5 1/2', 6', 7' & 8'
- King Kutter Stone Rakes 4', 5', 6', 7' & 8'
- Cornshellers- 3 Pt. And Pull Type
- Hay Tedders- 9'- 3 Pt. Or Pull Type
- Hay Wheel Rakes- 3 Pt.
- Seeders- Broadcasters- 3 Pt.
- Cultivator 1 Row- 3 Pt.
- Potato Diggers 1 Row- 3 Pt.
- Ag-Tech Preseeder
- Shaver Post Driver HD-8
- Cement Mixers-3 Pt.
- 10' Pasture Drag
- Woodsman- 3 Pt. Saw

## MISC. EQUIPMENT

- Heads- NI 766- 6' Pickup
- IH 810 13' w/Floating Cutterbar
- IH 960 13' Platform
- NH 960 15' Platform w/Floating Bar
- JD 443 Corn Head
- JD 343 Corn Head
- JD 243 Corn Head
- 1X Flat Trailers
- Richardton Hi-Lift Dump Wagon
- (5) Bin Wagon On Gear
- Bearcat 6 Ton-8 Ton Gears On Rubber- New
- 65 Gal. 3 Pt. Sprayer- New
- Kuker 400 Gal. Sprayer, Cent. Pump- 30' Boom
- NH 305 Side-Delivery Manure Spreader- New
- NI 10 Manure Spreader
- NI 12A Manure Spreader
- NI 18 Manure Spreader
- NH 206 Manure Spreader
- NI 212 Manure Spreader
- NI 217 Manure Spreader
- NI 218 Tandem Manure Spreader
- (2) JD-N Manure Spreader
- (3) Cub Manure Spreader
- Brillion 8' Seeder
- Rock Picker
- (2) 3 Pt. Transplanters
- JD 43 Cornsheller
- JD 8300- 23x7" Grain Drill
- IH 510-16x7" Grain Drill w/Grass & Fert.
- Cruet Buster- 3 Pt. Grain Drill 20x7" DD
- JD Loader, 148
- IH 2200 Loader
- (5) Set Of Duals-Various Types- Including 20.8x38- New
- (16) Manure Forks
- Cabs- AC 7000
- Woodsplitter- 3 Pt.
- Wood Chipper- Royer, 3 Pt., 8"
- United 14' Stalk Chopper
- NI 310- 1X Cornpicker

## ROTARY MOWERS

- Woods RM48
- Ford 909- 5' Pull Type
- Bush Hog- 6'
- Bush Hog 13' Batwing
- King Kutter Rotary Mowers- New 4', 5' And 6' 3 Pt. And Pull Type
- King Kutter Finish Mowers- New 4', 5', 6' & 7'- 3 Pt.



COME SEE US  
YOU'LL BE  
GLAD YOU DID!