

# THE OLD FARMER'S ALMANAC

NOV. 26-DEC. 2, 1990

Full Cold Moon, Dec. 2.

Nov 28, 1895, J Frank Duryea wins America's first automobile race, averaging 7 miles per hour round-trip from Chicago to Evanston, Ill., in his gasoline-driven car Nov 29, 1890, first of the Army-Navy football games is won by Navy, 24-0, at West Point Dec 1, 1955, Mrs Rosa Parks is arrested in Montgomery, Ala., for refusing to give up her bus seat to a white man *There is no medicine to cure fear*



**Ask the Old Farmer:** I want to soak pine cones in a chemical solution that will make them burn various colors Can you tell me what solution to use? C M, N Y

*Soak the cones in a solution of Epsom salts and water Then dry them out, they should give you the colors you want*

**Home Hints** Use ordinary catsup to clean copperware Rinse and dry right away

## OLD FARMER'S WEATHER FORECAST

**New England:** A day of clear and cold, then another wintery blast with freezing rain and snow Clearing to end the month December comes in with light snow  
**Greater New York-New Jersey:** Starting cold, then becoming more seasonable, but turning colder again to finish November December begins cloudy and cold  
**Middle Atlantic Coastal:** November ends in typical fashion, first rain, then cloudy and cold December brings flurries, sprinkles in the south, and turning colder  
**Piedmont & Southeast Coastal:** Cold air and light rain begin the week Rain increases, heavy in the east, to end the month December begins sunny and cool

(All Rights Reserved Yankee Publishing Incorporated, Dublin, NH 03444)

## Valley Livestock

Athens, Pa.

Monday, Nov. 19, 1990

Report supplied by auction

HOLSTEIN HEIFER CALVES TO 140 00

VEAL CALVES TO 90 00

VEALER BULL CALVES TO 140 00

SLAUGHTER CALVES 70 00 AND DOWN

GRASSERS & FEEDERS 50 00-70 00

LAMBS 40 00-50 00

SHEEP 12 00-20 00

HOGS 200 TO 250 LBS 52 00-56 00

SOWS 38 00-45 00

BOARS 32 00-43 00.

PIGS 10.00-30.00.

HEIFERS 46.00-57.75.

STEERS, NO TOP STEERS.

FEEDER STEERS 55 00-78 00.

BULLS 46 00-62 00

COWS 46 00-50 00, FEW TO 53 00

COWS MEDIUM 40 00-44 00

COWS POOR OR SMALL 38 00 AND DOWN

CATTLE MARKET SOME HIGHER

CALF MARKET STEADY

HORSES, NO GOOD ONES.

GOATS 25 00-75 00.

HAVE A GOOD THANKSGIVING.

## Eighty-Four Livestock

Eighty-Four, PA

Nov. 19, 1990

CATTLE 416...PDA...Compared with two weeks ago market: Choice slaughter steers 75.00-77.50, Select 69.50-74.00, Standard 63.00-68.00, few Utility 57.00-59.00; Holsteins; Select (few) 64.00-66.00. Choice sl. heifers 73.00-77.75, Select 66.50-71.50, Standard 58.50-64, Utility 49.00-55.50. Breaking Utility & Commercial sl. cows 49.00-53.50, high yielding 55.00, one 57.00, Cutter & Boning Utility 46.00-50.00, Canner & Low Cutter 38.00-45.50, Shells down to 12.00. Yield Grade No. 1, 1000/1900 lbs. sl. bulls 53.00-63.00, No. 2, 900/1300 lbs 48.50-54.00. Feeder Cattle: Medium & Large Frame No.1, 240/320 lbs. steers 90.00-110.00, 350/550 lbs. 75.00-93.00. Small lot Large No. 1, 420 lbs. 95.00. Medium and Large Frame No.1, 300/500 lbs. heifers 72.00-82.00, 240/300 lbs. 80.00-85.00. Medium & Large Frame No. 1, 300/530 lbs. bulls 79.00-85.00, small lot Medium No. 2, 785 lbs. 63.00, Small No 1, 385/550 lbs. 64.00-74.00.

CALVES 227...Few Choice vealers 100.00-116.00, few Good 91.00-97.00, Standard & Good 90/120 lbs. 54.00-67.00, 60/85 lbs. 43.00-55.00. Farm Calves: Hol.

Bulls #1, 90/130 lbs. 100.00-135.00, No. 2, 70.00-105.00; Hol. Heifers 90/120 lbs. 90.00-124.00. Beef cross 80/120 lbs. bulls and heifers 60.00-114.00.

HOGS 105...US No. 1-3 230/265 lbs. barrows and gilts 48.00-49.50, 1-3 217/267 lbs. 46.50-47.75, few 2-3 210/230 lbs. 45.00-46.00, 1-3 155/200 lbs. 43.00-44.00. US No. 1-3 400/650 lbs. sows 46.00-49.25. Boars 36.00-41.00.

FEEDER PIGS 24...US No. 1-3 30/42 lbs. feeder pigs 22.00-39.00 --- per head.

SHEEP 144...High Choice & Prime 80/105 lbs. sl. lambs 49.00-51.00, small lot 75 lbs. 61.50; Good & Choice 60/70 lbs. feeder lambs 48.00-60.00. Slaughter sheep 13 00-23.00.

GOATS 11...Large 50.00-53.00, few Medium 33 00-41 00 --- all per head

## Mercer

### Livestock Auction

Mercer, Pa.

Tuesday, November 20, 1990

Report Supplied by PDA

CATTLE 304...PDA...Compared with last weeks market: Slaughter steers .50 higher; Cows 1.50 to 2.00 higher. Choice slaughter steers 77.00-81.00, Select 72.00-77.25; Holsteins: Choice 73.00-75.50, few Select 67.00-69.00, Standard 63.00-69.00. Choice 74.20-77.00, one

High Choice 80.50, Select 68.50-74.00, Standard 60.00-65.50. Breaking Utility & Commercial sl. cows 48.50-54.00, Cutter & Boning Utility 44.50-50.00, Canner & low Cutter 37.50-45.00, Shells down to 19.00. Yield Grade No. 1, 1200/1700 lbs sl. bulls 53.00-68.00. Feeder Cattle Medium No. 1, 325/500 lbs. steers 70.00-74.00, couple 260 lbs. 80.00, Holsteins 750/820 lbs. 55.00-61.00; Medium #1, 350/550 lbs. heifers 63.00-75.00, 600/800 lbs. 57.50-64.00. Medium Frame No. 1, 400/550 lbs. bulls 70.00-74.00

CALVES 104...Standard and Good 90/120 lbs. vealers 55.00-64.00, 60/85 lbs 44.00-56.00. Farm Calves: No. 1, Holstein Bulls 90/130 lbs. 95.00-130.00, No 2, 70.00-95.00. Hol. Heifers 90/120 lbs 105.00-140.00. Beef cross 85/115 lbs bulls and heifers 75.00-112.00.

HOGS 129.. Barrows and gilts fully 2.00 lower. US No. 1-2 215/250 lbs 48.00-49.75, lot 51 10, 1-3 220/260 lbs 46.75-48.10, few 2-3 230/255 lbs 45.50-46.00, few 2-4 211/325 lbs 43.60-44.35. One US No 1-3 320 lbs 52.00, few 2-3 300/450 lbs. 44.00-47.00 One Boar 31.00

FEEDER PIGS 10...Lot US No 1-3, 30 lbs. feeder pig 18.00 - per head.

SHEEP 5...Couple Utility 63 lbs. 19.00 Few Slaughter sheep 7.00-15.00 - all cwt GOATS 0... --- all per head.

## STORAGE TRAILERS

For Rent

- ★ Delivered To Your Location
- ★ Safe And Inexpensive Storage

# KEENS

SERVICES INC.



717-626-5420

850 Keens Road, Lititz, PA 17543



Every Wednesday  
At 11:00 A.M.

## GOOD'S AUCTION

111 Maple Ave.

Leola, PA 17540

717-656-8911

717-656-9554

## PREMIUM LEAN BEEF

- Less Fat
- Lower Cholesterol
- Increasing Demand

## PREMIUM DOLLARS

- For Holstein Bull Calves
- For 1990 Investors

J. E. KAUFFMAN

LIVESTOCK MANAGEMENT SERVICES

White Oak Mills

419 W. High St., Elizabethtown, PA 17022

717-367-1525

PA TOLL FREE 1-800-468-5524

Replace Your Bulbs - Save Electricity  
FLUORESCENT LIGHTS



### PRICES

AS

LOW

AS

\$6.99

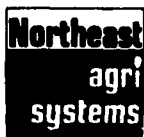


- Save Energy Replaces up to 75 watt incandescent
- Easy Installation
- Economical Lasts 10 times longer than standard bulb
- Fewer Lamp Changes
- Lower Maintenance Cost
- Durable Polycarbonate Housing
- 45,000+ Hour Ballast
- 10,000+ Hour Lamp Life
- Air Cooled
- Water Resistant Ballast
- 120 Volt
- Ratcheted Brass Socket
- Medium Base
- Starting Temperatures 0
- Made in USA

MODEL	WATTS	INCANDESCENT EQUIVALENT	INITIAL LUMENS
3000	5	25 WATTS	250
3200	7	40 WATTS	400
3500	9	60 WATTS	600
3700	13	75 WATTS	900

Call Toll Free 1-800-673-2580

SOLD AND SERVICED BY



NORTHEAST AGRI SYSTEMS, INC.

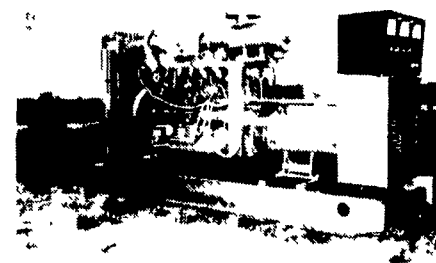
FLYWAY BUSINESS PARK

139 A West Airport Rd.

Lititz, PA 17543

(717) 569-2702

Dealer Inquiries Invite.



## GENERATORS

- Sales ★ Service ★ Rentals
  - ★ Complete Generator Systems
  - ★ PTO ★ Portables ★ 2-1600 KW
- "We Service It If You Have It  
And Sell It If You Need It"

34 W. Mohler Church Rd.  
Ephrata, PA 17522

Tel: 717-738-0300

Fax: 717-738-4329



## Contracts Being Offered For...

New Farrow To Finish Units  
Preferrably 300-500 Sows. Also Interested  
In New And Existing Finishing Floor  
To Be Run "All-In-All Out"

We Supply

- Cash Flow Information
- Professional Service Personnel
- Quality Genetics
- Producer Incentive Programs

Become a part of our Planned Growth!  
Call now to discuss this opportunity!

717-626-0331

or

1-800-432-3040



LOOKING FOR EXTRA  
CASH FLOW FOR YOUR  
FAMILY FARM?



## EXCELLENT CONTRACT AVAILABLE FOR HOGS & POULTRY

★ A STEADY MONTHLY INCOME

★ A GUARANTEED LONG TERM CONTRACT

Check Our Prices  
On Quality  
Buildings And  
Equipment!

Full Line Of Parts In Stock  
For Your Poultry &  
Hog Needs

WE SHIP UPS

SWINE & POULTRY SYSTEMS SPECIALISTS

# FARMER BOY AG.

200 E. LEBANON AVE. MYRTLE TOWN, PA 17067

24 Hour Service

Hours: M-F 9:00 AM - 5:00 PM

717 866 7565