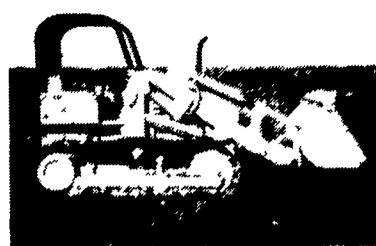




6,000 Lb. Cap. Mastercraft,
22' Lift, Sideshift, Ford Diesel,
Very Good Condition
\$7,500
301-486-6691



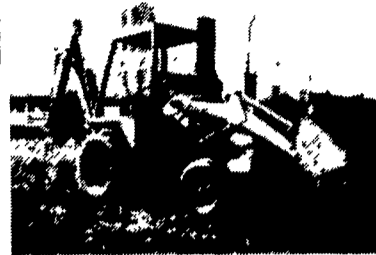
1983 JOHN DEERE 4450
Front Wheel Assist; 15 Speed Power-
shift Trans; Duals; Cab with Heat &
Air; 540 & 1,000 PTO; 3300 One Own-
er Hours; Will Trade.
\$39,500
Let's Deal
Call 1-800-345-2829
Curry Supply Co.
Curryville, PA



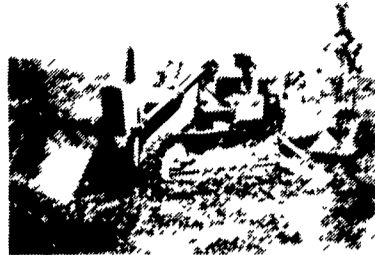
JD 450B excellent
\$12,000



JD Backhoe attachment
\$2800 choice



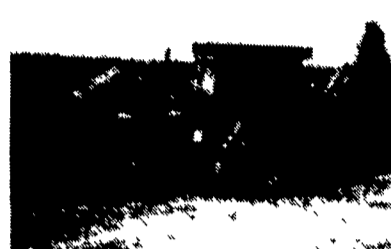
Case 480C **\$7,000** \$6,800



JD 2010 **\$7500**



Nelson Payloader Cummins
diesel **\$4,000** \$3,800



JD 310A excellent condition
\$12,000 \$11,000

JD 450C, 6 way engine overhauled, good cond., **\$12,000** \$11,000
IH 100C crawler/loader backhoe, engine overhauled, **\$9,500** \$8,500
JD 410 Backhoe engine overhauled **\$10,500** \$10,000
JD 350B 6 way, A1 condition **\$7,500**

J & F Equipment
(717) 859-3283
No Reasonable Offer Refused

COMBINES

Waiver of Interest Till Sept. 1, 1991
1983 JD 6620, 1,260 Hrs.
1975 JD 7700 rotary screen w/215 flex
cutter bar
1979 JD 7720 w/Mud Hog drive, 216 flex
cutter bar
1982 JD 8820 w/4WD, 1,965 hrs. w/222
flex cutter bar, JD 843 corn head
1982 JD 8820, 4WD w/224 flex cutter
bar
1981 JD 8820 w/4WD, dual tires w/JD
220 flex cutterbar, 843 corn head
1981 JD 7720 w/218 Flex Cutter Bar
JD 444 Corn Head, Hi-Tin
JD 643 corn head

TRACTORS

1983 JD 4450, cab, w/MFWD, power shift
1977 Kubota L225, 25 h.p., 950 hrs.
1985 JD 4450, cab w/MFWD, quad range,
1,085 hrs., w/dual 18.4x38 tires
IH 460 w/loader

MISCELLANEOUS



1989 JD 6000 Hi-Cycle, 60 Ft. Boom
\$24,950

IH #60 flail mower, 14'
JD RG 4 row cultivator, (4 row wide)
JD 7000 6-30 planter, dry fert., insecticide
monitor
JD 14 row soybean special planter
JD 27 Flail Shredder
JD 265 loader
AC 11 row planter
Dunham 14' Crowfoot Packer
Brillion 18' Gang Crowfoot Packer

W.N. COOPER & SON, INC.
Morgne Rd. Rt. 291
Chestertown, MD
301-778-3464



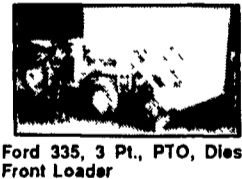
Douglas
EQUIPMENT & SUPPLY CO.
717/741-2626 or 717/741-1797

2449 SOUTH QUEEN ST (rear),
YORK, PA 17402

Interstate 83 • Exit 6E
FAX 717/741-1518



Huber F-1700, 6V-53
Detroit, Power Shift,
Cleaned & Painted
\$11,500



Ford 335, 3 Pt., PTO, Diesel
Front Loader
\$10,500



1987 Case 580E
Extend-A-Hoe, Wobble
Sticks, Very Good Cond.
~~\$22,500~~ **\$20,500**



(2) Clark 45C, 4-53 GM
Diesel, full cab & heater,
17.5x25 tires, 2 yd., exc.
cond.
\$19,900



Ford 3600, Gas, Power Shuttle,
w/Snow Plow **\$3,250**



9 Ft. Bin Type Hyd. Spreaders
\$1100
Also Tailgate Spreaders
\$500



Trojan 1900, GM Diesel, Full
Cab & Heater, Exc. Rubber,
Exc. Cond **\$12,500**



Cat D4D, Tilt Blade, 1600 Act-
ual Hrs. **\$24,000 OBO**

FORKLIFTS

Lull 31 ft. Lift, New Tires, C&P**\$6,500**

RUBBER TIRE LOADERS

Case W-18, full cab & heater, good rubber,
good cond.....**\$18,500**

TENNANT SWEEPERS

Model 92, 4 cyl. water cooled, hydrastatic,
good cond.....**\$6,500**
240 w/front power broom, 2 cyl. Kohler.....**\$2,500**

ROLLERS

Gallon 10-14T tandem, 6 cyl. IH gas,
hydrastatic**\$5,850**
Ferguson 9 wheel rubber tire roller
Oliver gas Call For Price
Mauldin 3-5 ton w/towing package, hydrostatic
vibratory, ex. cond**\$3,850**
Raygo romper 2-36, vibratory, hydrastatic,
Dautz diesel.....**\$4,995**
Western 2 ton vibratory roller,
Wisconsin gas.....**\$2,500**

3-5 ton Littleford w/towing package,
V4 Wisconsin.....**\$1,500**

BACKHOES

Case 580C, full cab, extend-a-hoe, 4 in 1 bucket,
cleaned & painted, excellent cond.....**\$13,500**

GRADERS

Huber F-1700 6V-53 Detroit, full cab & heater,
power shift.....**\$11,500**
Huber M-52 Maintainer, 4 cyl. cont.,
sideshift center blade.....**\$3,995**

MISC.

Schramm Pneuma Tractor, 125 Comp.
w/post driver..... Call For Price
1989 Used custom 10 ton, air brakes.....**\$5,500**
New Custom trailers in stock, 3 ton
thru 20 ton..... Call For Prices
(2) MF 40B tractors, 3 pt. PTO, diesel,
sickle bar mower..... Call For Price
New & Used Buckets

Best Buys in Used Equipment

TRACTORS

AC D17	IH 966	MF 20, Gas
AC 220	IH 3488H	Case 1835C Skid Steer
AC 190XT	JD 8630	Case 2590
AC WD	JD 8650	ST 251
White 2-135	JD 4440	ST PT225
IH 986 w/Loader	JD 7020	Farmall F20

DISCS

JD 220, 20'	IH 496, 22'	KR 1577 17'
JD 230, 12'	IH 37, 10'	KR 1425, 20'
Ford 230 16'	IH 370, 12'	SF 29'
BH 24'	IH 496, 22'	SF 24'
IH 490, 22'	(2) KR 1966, 31'	

TILLAGE

AC 6x16 On Land Plow	JD 2350-2450 8x18 Plow
WR 32' Field Cultivator	JD 145 Plow, 4x16
Athens 15' Chisel Plow	BR 25' Cultimulcher
White 20' Field Cultivator	BR 19' S Packer
MK 6R Cultivator	BR 12' Packer
JD 1010 Field Cultivator 18'	WR 10x18 Plow

MISCELLANEOUS

Haybuster Tandem No-Till Drill 24'	NH 717 Forage Harvester
Krause 5215 No Till Drill 15'	NH 791 Manure Spreader
FD F-600 Dump Truck	Case IH 900 Planter 6RN
JD 737 15' Mower	IH 510 Drill 18x7
JD 7000 Planter, 8 Row	IH 50 Shredder
JD 66 Blower	

HAY EQUIPMENT

IH 46 Baler	NH 90 Bale Stacker
IH 440 Baler	NH 488 Mower Conditioner
IH 47 Baler w/Thrower	NH 499 Mower Conditioner

COMBINES

NH TR70 4WD	IH 915	MF 760
IH 1460	(3) JD 8820 4WD	MF 510
IH 715	JD 7720 4WD	(2) MF 750

Large Selection Of Cornheads And Platforms Available
* Just Traded

HOOPER
HOOPER EQUIPMENT INC
MIDDLETOWN, DE

(302) 378-9555 1-800-341-4028

