

THE OLD FARMER'S ALMANAC

NOV. 19-25, 1990
Now prune grapevines.

Nov 19, 1863, President Lincoln delivers the Gettysburg Address. Revered by later generations, it is ridiculed by newspapers of the day. Nov 22, 1963, President John F. Kennedy is fatally shot in Dallas, Texas. Nov 23, 1945, all food rationing, except sugar, is ended. Nov 25, 1834, dinner for two at Delmonico's in New York: soup, steak, coffee, and a whole pie for 25 cents. *There's no serving the public and pleasing it too.*



Ask the Old Farmer: My father was a cabinetmaker. He used to use something he called "French polish" as a finish on the wood. Do you know what it was? A.S., Mich.

French polish was a white shellac thinned way down with alcohol. Many coats made a nice, clear finish to show the grain of woods, but it wouldn't stand spilled liquids or damp, cold weather.

Home Hints: Don't struggle with forks and potholders, put on some rubber gloves and lift the turkey from the pan to the platter!

OLD FARMER'S WEATHER FORECAST

New England: A cold, cloudy beginning this week. Sleet, snow in the north, hamper holiday travel plans. By the weekend it's clearing, but rather cold.
Greater New York-New Jersey: Cold all week, with showers in the south, giving a hint of the winter to come. The month's average of 45° F is 1° below normal.
Middle Atlantic Coastal: November continues cold and wet. A cold wave starts the week. Rain, then cloudy and cold, with rain confined to the south.
Piedmont & Southeast Coastal: Rainy and cool to start the week, becoming seasonable with showers. Finally more rain, heavy in the west, and cold.

(All Rights Reserved Yankee Publishing Incorporated Dublin NH 03444)

Isennock Auction

New Park, PA

Monday, Nov. 12, 1990

Report supplied by auction

SLAUGHTER COWS GOOD 51 00-52 00, LOW TO GOOD 48 75 50 50 LOW AND SHELLS 47 00 AND DOWN VEAL CALVES 220-295 LBS 60 00-75 00, 1 AT 180 LBS 90 00, 120-130 LBS 89 00-126 00, 100-110 LBS 100 00-111 00, 85-95 LBS 70 00-110 00, 55-65 LBS 57 00-83 00, WEAK 64 00 AND DOWN

HEIFERS CALVES UP TO 106 00 FEEDER CATTLE BULLS 485-785 LBS 60 00-75 00

SOWS 385-540 LBS 46 25-50 25 BOARS 1 AT 675 LBS 40 00

St. Louis Cattle, Hogs

Thursday, November 15, 1990

OPENING MID-SESSION WEEKLY CLOSE CATTLE AND CALVES: 725 (0 SLTR, 725 FDRS) SUPPLY CONSISTS OF FEEDER CATTLE AND CALVES FOR REGULAR THURSDAY'S AUCTION

NO SALES REPORTED ON SLAUGHTER CATTLE. SLAUGHTER CLASSES NO SALES. COWS, CUT,

UTIL, COMM BULK SALES HI-DRESS % LO-DRESS % BREAKING 2-4 BONDING 1-2 LOW TO AVG CUTTER.

RECEIPTS THIS WEEK 1,700. WEEK AGO 1,700. YEAR AGO 1,700

COMPARED WITH LAST WEEK'S TERMINAL MARKET CLOSE, SLAUGHTER STEERS AND HEIFERS STEADY TO WEAK. OVERALL QUALITY BELOW PREVIOUS WEEK'S LEVEL. COWS AND BULLS WEAK TO 1 00 LOWER. SUPPLY MAINLY MIXED SELECT AND CHOICE STEERS AND HEIFERS WITH AROUND 15% COWS

New Holland Horses

New Holland Sales Stables

New Holland, PA

Monday, Nov. 12, 1990

REPORT SUPPLIED BY AUCTION

REGISTERED RECEIPTS OF 319 HEAD OF HORSES, MULES AND PONIES. MARKET LOWER

DRIVING HORSES. 450 00-700 00. RIDING 375 00-635 00.

LIGHTWEIGHT KILLERS. 350 00-425 00

HEAVYWEIGHT KILLERS: 450 00-575 00

THIN HORSES 135 00-275 00

MARE PONIES 45 00-110 00

COLTS 30 00-85 00

GELDINGS 45 00-110 00

LARGER PONIES 160 00-250 00

Oklahoma City Feeder Cattle

Oklahoma City, Okla.

Wednesday, November 14, 1990

OKLAHOMA NATIONAL STOCKYARDS: WEEKLY CATTLE SUMMARY: COMPARED TO LAST WEEK'S CLOSE: FEEDER STEERS, STEER CALVES, & HEIFER CALVES STEADY TO \$2.00 HIGHER. FEEDER HEIFERS OVER 500 LB. FIRM. QUALITY OF CALVES MUCH IMPROVED FROM TWO WEEKS AGO WITH FAT CALVES NOW AT A MINIMUM. BULK OF CALVES IN AVERAGE TO MODERATELY THIN CONDITION. WHEAT PASTURES MUCH IMPROVED AFTER RAINS TWO WEEKS AGO FOLLOWED BY INDIAN SUMMER WEATHER. YEARLING FEEDER CATTLE CONTINUE IN LIGHT SUPPLY WITH BUYERS VERY AGGRESSIVE FOR THOSE IN DECENT FLESH CONDITION. BUYERS ALSO ACCEPTING 600-700 LB CALVES MORE READILY THAN IN PAST WEEKS. SLAUGHTER COWS CLOSED STEADY. SLAUGHTER BULLS \$1.00-\$1.50 LOWER. PACKER DEMAND CLOSED FAIR. RECEIPTS THIS WEEK 12,400, LAST WEEK 7,197, LAST YEAR 11,720. SUPPLY INCLUDED 44% YEARLINGS, 47% CALVES, AND 9% COWS & BULLS. BULK PRICE RANGES FOR THE WEEK FOLLOW:

FEEDER STEERS MEDIUM AND LARGE FRAME 1, 250-300 LB \$123.50-\$134.00, 300-350 LB \$120.00-\$129.00, 350-400 LB \$111.00-\$120.50, 400-500 LB \$104.00-\$113.00, 500-600 LB \$92.00-\$100.50, FEW BWF \$106.50-\$108.00; 600-700 LB \$90.50-\$97.00, 700-750 LB \$92.25-\$95.50, LOAD 730 LB \$97.00, 750-800 LB \$89.00-\$94.50; 800-900 LB \$84.50-\$89.50. LARGE FRAME 2 HOLSTEINS, 390 LB. \$99.00, 475-600 LB \$81.00-\$86.00; 625-700 LB. \$75.00-\$80.00, LOT 875 LB \$67.75.

LARGE FRAME 1, 200-300 LB. \$109.00-\$122.00; 300-450 LB. \$98.50-\$105.00; 450-500 LB. \$93.00-\$97.00; 500-550 LB. \$87.00-\$93.50; 550-600 LB. \$86.00-\$88.00; 600-700 LB. \$84.00-\$89.00; 700-800 LB. \$82.75-\$85.75.

SLAUGHTER COWS: CUTTER, BONING AND BREAKING UTILITY Y.G. 1-4 AVERAGE DRESSING \$45.00-\$48.00, HIGH DRESSING \$47.00-\$49.25; LOW DRESSING \$42.50-\$45.00. CANNER AND LOW CUTTER OVER 900 LB \$39.50-\$42.50, UNDER 900 LB. \$35.50-\$39.50.

SLAUGHTER BULLS: Y.G. 1 1250-2000 LB. AVERAGE DRESSING \$57.50-\$60.50; HIGH DRESSING \$60.25-\$62.50; HIGH DRESSING/HIGH BONING \$62.50-\$66.75. Y.G. 1-2 1200-2000 LB. LOW DRESSING \$54.50-\$57.75

FEEDER COWS: 775-925 LB HEIFERETTES \$64.00-\$70.50, YOUNG COWS 775-1000 LB \$57.00-\$63.00, 1100-1150 LB \$51.00-\$54.50

North Jersey Livestock

Hackettstown, NJ

Tuesday, Nov. 13, 1990

Report supplied by auction

CALVES 30-113.

COWS 31%-.53%.

EASY COWS .16-.45%.

HEIFERS .40%-.66%.

BULLS 48-.69%.

STEERS .46-.72%.

HOGS .39%-.51.

BOARS .34%-.37%.

ROASTING PIGS, EACH 30.00-57.00.

SOWS .35-.48.

SHEEP .08-.47.

LAMBS EACH 15.00-73.00.

LAMBS PER LB. .15-.83.

GOATS EACH 15.00-82.50.

KIDS EACH 10.00-67.00.

TOTAL 1,290.

Livestock Auction

N. Wilmington, Pa.

Monday, November 12, 1990

Report Supplied by PDA

343 HEAD.

COWS: 1.00-2.00 LOWER.

STEERS: STEADY, FEW CH

76.50-78.50; GOOD 70.00-75.00; STAND

DARD 55.00-65.00.

HEIFERS: GOOD 65.00-68.00; STAND

DARD 60.00-65.00; UTILITY

45 00-50 00.

COWS: UTILITY AND COMMERCIAL

47.00-50.00; COUPLE 50.50, 1 AT

51.75 AND 1 AT 52.25; CUTTERS

44.00-48.00; CANNERS AND LOW

CUTTERS 35.00-43.75; SHELLS DOWN

TO 25 00.

BULLOCKS: CHOICE 1355 LBS

TINA AND BLACK ANGUS CLASS 63

BULLS: YG #1 1720-1830 LBS

60 00-61 50, YG #2 1475-1880 LBS

54.00-58 00.

FEEDER STEERS: MD. #1 250-520

LBS. 81.00-88.00; 210 LB HOLSTEIN

HEIFERS .88; 280-495 LBS. 73.00-83 00,

BULLS 440-545 LBS. 67.00-75.00.

CALVES: 360. FEW CHOICE

90 00-99.00; GOOD 80.00-90.00; STAND

DARD AND GOOD 60 00-80.00; UTILI

TY 55.00-60.00; HOLSTEIN BULLS

95-133 LBS. 117.50-127.50.

HOLSTEIN HEIFERS 91-117 LBS

89 00-110 00, 85 LBS .60

HOGS 266. US#1 & 2 229-233 LBS

49 00-49 50; 252-267 LBS. 50 60-51 50, 1

& 3 214-253 LBS 44.00-48.10; LIGHT-

WEIGHTS 160-177 LBS. 43.00-43 25.

SOWS. 1 & 3 355-395 LBS.

43 50-52 00, 420-595 LBS. 49.00-51 00

BOARS: 37 00-42.25.

FEEDER PIGS: 5, NO MKT. TEST

SHEEP: 117. CHOICE LAMBS 80-110

LBS. 54.00-59.00, FEW AT 68.00; GOOD

60-75 LBS. 46.00-56.00; UTILITY FEED-

ER LAMBS 40-50 LBS. 26 00-32 00

GOATS: 10. MEDIUM 37.00-42 00,

LARGE 40.00-58 00.

PARADISE CONCRETE METERED DELIVERY!

You can't over or under order! Guaranteed Savings! Call us for Prices. Variable Pricing!

DELIVERY ANYTIME!

Dedicated To The Farm Community

19 Meadow Lane Paradise



717-687-0990

Mitch White Eric R. Probst

HOSTETTER PORK

Wanted To Buy Crippled and Disabled Sows and Boars



Hogs Slaughtered For Federal Inspection PHONE 717-274-7609

"WANTED IMMEDIATELY" SWINE FINISHING FLOORS

- 3 (New) 1,440 head capacity
- 3 (New) 1,200 head capacity

We Supply:

- Single source 45 lb. Feeder Pigs
- Top Base Contract Payment
- Feed Conversion Bonus
- Sort Bonus

IF INTERESTED IN CONTRACT SWINE FEEDING Phone today!

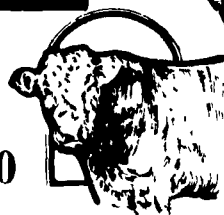
717-626-6566 1-800-223-4479

"ECHS" - Ask For Tom

ATTENTION CATTLE FEEDERS

SPECIAL GRADED FEEDER SALE

Friday, November 30, 1990



- 150 Head Angus Calves, 400 to 500 Lbs., From Maryland
- 100 Head Mixed Colored Cattle From Northern Pennsylvania
- 250 Head Other Local Cattle

Walter M. Dunlap and Sons

Lancaster Stockyards Tel. (717) 397-5136

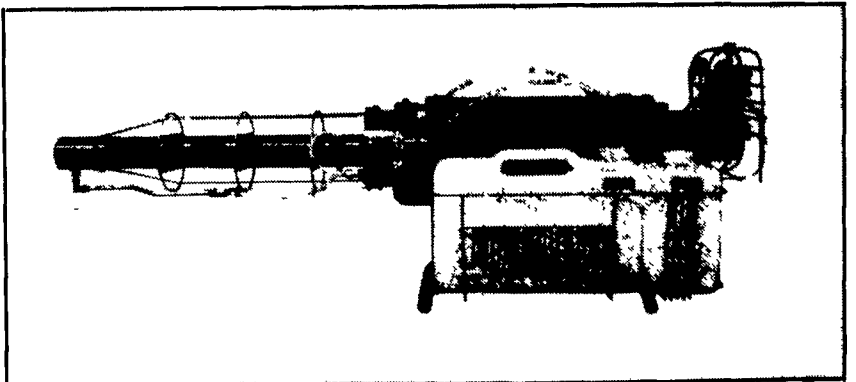
An Old Line Commission Firm Keeping Abreast With The Times

MELHORN SALES, SERVICE, TRUCKING CO.

1010 W. Main St., Mount Joy, PA 17552

BIOFOGGER

A Revolutionary Way To Disinfect Your Poultry Or Hog Buildings



- Thermal Fogger Using Bioguard X-185
- Cost Effective Method For Disinfecting

Call For Price On Unit Or For Us To Do The Job For You

The only full service company, in this area, to handle the total needs of the poultrymen.



For More Information Phone:

717-653-1102

Monday - Friday 8:30 AM - 4:00 PM

