

**Mercer County DHIA
September, 1990
Rolling Herd Average**

Name	Brd.	No. Cows	% Irr	Days Milk Lbs.	Fat Lbs.	Protein Lbs.
Rollin & Dennis						
James	B3	47.2	88.9	24,227	899	760
DeWayne & Wm. Coulter	3	82.6	90.3	21,989	825	678
Dale L Kepner	B3	38.0	85.9	20,591	764	661
Canon Dairy	B8	83.3	88.6	19,548	757	620
Lengel Brothers	G3	164.6	90.4	18,976	732	628
Donald Yasnowsky	B3	31.8	85.9	20,193	722	623
Arthur Baxter	3	36.2	89.3	19,519	717	595
Shannon Dairy	G3	159.1	86.9	19,757	703	615
Larry Stevenson	B3	36.2	88.1	19,348	687	613

Lactation Reported Over 800 Lbs.

Name	Brd.	No. Cows	% Irr	Days Milk Lbs.	Fat Lbs.	Protein Lbs.
Lengel Brothers						
817		6	1	305	26,401	1087
874		4	3	305	26,529	1002
759		6	11	305	25,557	841

Name	Brd.	No. Cows	% Irr	Days Milk Lbs.	Fat Lbs.	Protein Lbs.
Rollin & Dennis James						
Dana		5	11	305	32,363	1074
Gina		6	0	305	26,618	1022
Juliet		3	0	305	23,545	998
Blizzard		3	2	305	25,331	990
Dutches		8	2	292	25,859	980
Gold		3	3	291	26,315	957
Leesa		3	3	305	26,216	942
Saber		6	8	305	24,870	904
Maize		6	4	305	25,429	886
Vantage Jerseys						
427		5	3	305	22,493	1031
438		5	1	305	18,777	978
409		5	9	302	21,763	962
352		6	11	305	21,801	909
539		3	0	305	19,074	842
545		3	0	305	17,097	821
479		4	3	305	16,952	820
Hunting Valley Dairy						
357		4	7	305	24,318	975
342		4	7	305	23,037	892
339		4	8	305	20,938	881
375		3	9	305	23,655	840
269		6	9	305	24,404	839
MacHaven Dairy Farm						
250		5	2	305	22,042	974
261		5	9	305	24,702	940
139		8	0	305	24,045	928
221		4	3	305	23,704	874
243		5	5	305	19,765	870
114		4	1	305	20,002	845
254		5	0	282	19,242	821
118		7	0	305	19,604	801

Name	Brd.	No. Cows	% Irr	Days Milk Lbs.	Fat Lbs.	Protein Lbs.
David J Woods						
53		3	1	305	25,260	970
13		3	0	305	20,410	856
Van De Jersey						
Aurora		5	1	305	18,983	964
Jenna		5	9	305	17,459	907
Sunbeam		6	1	297	18,000	872
Rose		3	4	305	16,721	837
Augusta		3	2	305	16,524	825
Donald Yasnowsky						
7		4	7	305	24,672	955
15		4	3	299	20,333	824
Mrs. Charles Robinson						
Maxine		5	5	305	23,687	931
John Ligo						
85		8	9	305	22,585	922
Canon Dairy						
Free		5	10	297	20,828	891
Odie		2	11	305	21,561	862
Frolic		5	5	305	22,106	815
Debbie Moose						
Tia		3	11	305	15,305	862
Lulu		3	3	305	20,329	803
David & Leigh King						
22		9	10	305	25,222	859
68		3	9	395	18,186	806
21		8	2	301	23,742	801
Romar Jersey Farm						
Norma		7	5	305	16,751	859
Peg		4	8	305	18,014	850
Minnie		3	11	305	15,729	829
Irishtown Acres						
G95		3	11	305	17,978	853
Larry Stevenson						
11		6	0	305	21,753	842
17		5	6	305	22,246	816
Dale L Kepner						
123		6	4	305	21,692	841
West Branch Holstein						
339		4	5	305	23,059	840
Ralph & Gary Oakes						
Heidi		4	8	305	21,531	836
Clan Campbell						
76		3	1	305	19,551	812
Shannon Dairy						
146		3	9	305	22,368	811

**A NEW DESIGN
STEWARD AIR CLIPPERS**



MODEL #BP-100B \$169.50

- Lightweight & versatile
- Operates on 25 P.S.I.
- Built-in regulator
- Handy off-on trigger
- Weighs less than 3 lbs.
- 1 year warranty

Extra Blades- \$17.50 Per Set
Add \$2.00 per order for shipping.
Send check to your nearest dealer.

We can change your clipper from 12 volt or electric to air.

- H & K Sales - 59547 C.R. 35, Middlebury, IN 46540
- Pequea Batteries - 103A N. Ronks Rd., Ronks, PA 17572
- Beiler's Pneumatics - 718 Vintage Rd., Christiana, PA 17509
- Winter Rd. Diesel Service - Rd. #1, Box 14, Loganton, PA 17747
- Beiler Plumbing & Supply - 171 Newport Road, Leola, PA 17540
- Muncy Hill Repair - Rd #3, Box 493, Muncy, PA 17756
- Air Works - 10412 Dover Road, Apple Creek, OH 44606
- Newport Repair - 3818 E. Newport Rd., Gordonville, PA 17529
- Charm Engine Corp. - 4741 S R 557, Millersburg, OH 44654
- Troyers Chair Shop - Rd. #2, Box 220, Mifflintown, PA 17059
- Spring Garden Plumbing - 335 Spring Garden Rd., Kinzer, PA 17535
- Yoder's Air & Hydraulics - Rt. #1, Box 113, Meyersdale, PA 15552
- Sam Yoder Jr. - 17522 A Peters Rd., Middlefield, OH 44062
- C.S. Supply - Rd. #1, Box 495 A1, Mill Hall, PA 17751

Canada orders write for prices to:
Rufus Kuepfer, R.R. #1
Newton, Ontario, NOK 1R0

Dealer inquiries write 718 Vintage Rd., Christiana, PA 17509



SUPER BOWL

ENERGY FREE WATERER

the MOST ADVANCED Design In Livestock Waterers!



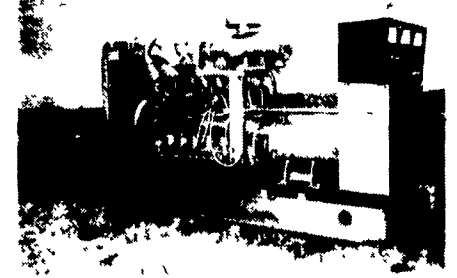
LOCAL DEALERSHIP AVAILABLE

WE SHIP VIA UPS ANYWHERE

- A MODEL FOR EVERY NEED — 1, 2 AND 4 OPENING
- UNIQUE HINGED DOOR CLOSURE — EASY TO OPERATE
- LOWEST PRICES — BUY DIRECT AND SAVE
- SUITABLE FOR ALL ANIMALS — COWS, CALVES, SHEEP, HOGS ETC.

U S AGRI-SYSTEMS, INC.
1-800-222-2948

MARTIN MACHINERY



GENERATORS

- Sales ★ Service ★ Rentals
 - ★ Complete Generator Systems
 - ★ PTO ★ Portables ★ 2-1600 KW
- "We Service It If You Have It
And Sell It If You Need It"*

34 W. Mohler Church Rd.
Ephrata, PA 17522

Tel: 717-738-0300
Fax: 717-738-4329

Real Rubber

Waterproof



AMERICAN MADE
WHY PAY RETAIL

Toplace - 3 eyelet
Ideal For Barn Use
Insulated \$47.95
Not Insulated \$32.95

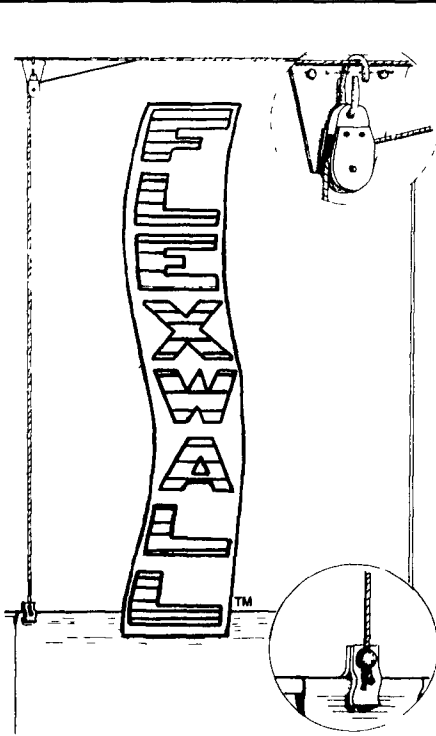
Zipper Front - Extra
Insulation - Suitable For
The Coldest Weather \$54.95

These Boots Run Large To Fit Over Heavy Socks
Order Same As Shoe Size - Available Size 6-13

Name _____
Address _____
City _____ State _____ Zip _____

	Size	Price Each
Toplace Insulated		\$46.95
Zipper Insulated		\$53.95
Toplace Not Insulated		\$30.95
Total		
NY 6% Sales Tax		
Amount Enclosed		

Send To
W-R Supply Co.
Lake Craine Rd., Box 310
Earlville, NY 13332
800-533-1675
We Ship In 24 Hours



**NORBCO INTRODUCES
HEAVY DUTY SIDEWALL CURTAIN SYSTEM
DESIGNED FOR DAIRY BARN**

- **DROP LINE PULLEYS** — Heavy duty steel pulleys with oil-impregnated bronze bearings to insure life-time self-lubrication. Pulleys mounted on rugged 3-bolt bracket.
- **HEM PIPE** — Heavy structural 1" O.D. on both top and bottom of curtain.
- **CABLE** — Aircraft cable on all drop lines and main lines.
- **CONTROLLER** — Heavy duty manual chain lift or automatic controller.
- **CURTAINS** — Several types available including insulated, non-insulated & translucent. Featuring — Custom formulated extended-life dairy curtain with 7-year warranty.

Call for the Name of Your Nearest Dealer



BARN EQUIPMENT — Manufacturer/Distributor
Rt. 233 P.O. Box 370 • Westmoreland, NY 13490
Tel. 315-853-3936 • FAX 315-853-8429