

Lebanon Valley Livestock Auction

Fredericksburg, Pa.
Tuesday, October 30, 1990
Report Supplied by PDA

CATTLE 133...PDA...Compared with last weeks market: Slaughter cows mostly 1.00 to 2.00 lower. Couple Choice slaughter steers 78.00; Holsteins; few Choice 67.50-68.00, few Select 63.50-65.75, one Standard 59.75. Few Choice sl. heifers 72.75-74.75; few Choice Holsteins 65.25-67.25, one Select 61.25, two Holsteins 60.25-60.50. Few Breaking Utility & Commercial sl. cows 48.00-53.25, Cutter & Boning Utility 45.00-50.25, few 53.25, Canner & Low Cutter 42.50-46.75, few Shells down to 28.50. Two Yield Grade No. 1, 515/1685 lbs. sl. bulls 60.75&64.75.

CALVES 239...Vealers steady to 5.00 lower. One Choice 90.00, Standard & Good 70/105 lbs. 55.00-62, few 67.00, Utility 45/100 lbs. 40.00-65.00. Farm Calves: Hol. Bulls No. 1, 90/130 lbs. 110.00-135, few 145.00, few 85/90 lbs. 90.00-107.00, No. 2, 80/115 lbs. 85.00-115, few down to 60.00; Hol. Heifers 90/115 lbs. 100.00-180.00, few No. 2, 75/90 lbs. 74.00-90.00. Beef cross 90/110 lbs. bulls and heifers 74.00-127.00.

HOGS 92...Barrows and gilts small supply weak to 5.00 lower. US No. 1-2 220/240 lbs. 50.75-51.00, two lots 51.75-52.25, 1-3 220/235 lbs. 50.00-51.25. Sows: US No. 1-3 315/540 lbs. sows 45.00-51.50, mostly 46.50-59.50. Few Boars 41.50-43.25, few lt. weights 43.25-44.50.

FEEDER PIGS 0... - Cwt.
SHEEP 7...Few Choice 90/95 lbs. wool slaughter lambs 40.00, two Good 50/55 lbs. 53.00&59.00. Two Slaughter sheep 10.00&15.00 - all cwt.

GOATS 1...Medium 43.00 - all per head.

Leesport Livestock Auction

Leesport, Pa.
Wednesday, October 31, 1990
Report Supplied by PDA

CATTLE 202...PDA... Supply included 26 head feeder cattle and 78 slaughter steers. Compared to last Wednesday's market: Slaughter steers steady to strong; Cows steady to 3.00 lower. Few High

Choice & Prime 1235/1325 lbs.1120/1375 lbs. slaughter steers 78.75-81.25, Choice 2-4 950/1415 lbs. 75.75-79.00, Select 70.00-76, few 77.25; Choice 1120/1475 lbs. Holsteins 67.00-72.25, Select 63.25-66.75, Standard 67.50-71.75. Few Choice sl. heifers 73.75-79.25, two Choice Holsteins 68.75&71.25, one Select Holstein 58.50. Few Breaking Ut. & Commercial sl. cows 48.50-57.50, one 55.25, Cutter & Boning Utility 46.00-50.50, few high dressing to 53.00, Canner & low Cutter 42.25-45.75, few Shells down to 35.00. Few Select sl. bullocks 64.25-75.75, few Standard 60.25-62.25. Yield Grade No. 1, 1130/1655 lbs. sl. bulls 60.50-66, few 71.75. Feeder Cattle: Few Large #2, 685/840 lbs. steers 63.50-67.25. Few Medium Frame #1, 365/455 lbs. heifers 68.00-75.00, few Large #2, 690/760 lbs. 52.00-53.25. Med. & Large Frame #1, 640/840 lbs. bulls 59.50-67.00.

CALVES 189...Vealers mostly steady. One Choice 108.50, one Good 74.00, Standard & Good 70/110 lbs. 55.00-65.00, 50/100 lbs. 40.00-58.00. Farm Calves: No. 1, Holstein Bulls 90/125 lbs. 110.00-135.00, few 142.00, No. 2, 80/120 lbs. 70.00-110.00; Holstein 85/110 lbs. heifers 140.00-165.00. Beef cross 85/180 lbs. bulls & heifers 85.00-140.00. Good & Choice 270/425 lbs. slaughter calves 73.00-92.00.

HOGS 318...Barrows and gilts mostly 3.00 lower. US No. 1-2 220/250 lbs. 51.00-51.75, two lots 52.00&52.25, lot 54.00, 1-2 250/260 lbs. 50.00-50.50, 1-3 215/265 lbs. 50.00-50.75, lot 206 lbs. 49.00, lot 295 lbs. 48.75, 2-3 245/260 lbs. 49.75, lot 265 lbs. 48.85, 1-3 140/185 lbs. 37.00-39.00. Sows: mostly steady. US No. 1-3 290/760 lbs. sows 44.50-50.00, mostly 47.00-48.00. Boars 40.00-43.50.

FEEDER PIGS 192...Lot US No. 1-3 17 lbs. feeder pigs 20.00 perhead; 1-3 22/30 lbs. 75.00-97.50, two loads 100.00, 35/40 lbs. 87.00-90.00, lot 1-3 54 lbs. 87.00, 2-3 35/40 lbs. 75.00-80.00 --- all per hundredweight.

SHEEP 61...Few High Choice & Prime 75/125 lbs. wool slaughter lambs 45.00-58.00, Choice 75/125 lbs. 44.00-53.00, lot 40.00; few Good & Choice 45/55 lbs. 50.00-82.50. Slaughter sheep two 16.00&20.00; two Yearlings 20.00&29.00 - all cwt.

GOATS 23...Few Large 45.00-62.50, Medium 25.00-49.00, few Kids 38.00-45.00 --- all per head.

Carlisle Livestock Market

Carlisle, Pa.

Tuesday, Oct. 30, 1990

SLAUGHTER STEERS: SELECT AND LOW CHOICE 70.25-75.00; STANDARD 66.00-68.50. SLAUGHTER HEIFERS CHOICE LIGHTS 73.00-73.75; SELECT 68.00-72.00; STANDARD 62.75-67.50.

SLAUGHTER COWS: BREAKING UTILITY AND COMMERCIAL 50.75-54.75; CUTTER AND BONING 50.50-53.00; CANNER AND LOW CUTTER 46.00-50.00; SHELLY 45.00 DOWN.

SLAUGHTER FAT BULLS, YIELD GRADE 2 UP TO 65.00.

FEEDER CATTLE, FEEDER STEERS, ALL WEIGHTS, MEDIUM #1 85.00-102.00; MEDIUM AND LARGE #2 60.00-74.00; LARGE #1 75.00-82.00. FEEDER HEIFERS ALL WEIGHTS, MEDIUM #1 84.00-90.00; LARGE #1 66.00-76.00.

FEEDER BULLS: ALL WEIGHTS, MEDIUM #1 82.00-107.00. LARGE #1 78.00-81.00. VEAL CALVES CHOICE 90.00-106.00; GOOD 75.00-89.00; STANDARD 60.00-72.00; LIGHT WEAK 58.00 AND DOWN.

FARM BULLS: 115.00-140.00. HOGS, BARROWS AND GILTS US #1-3 210-260 LBS. 52.50-54.00; OVER 290 LBS. 47.00-51.75; UNDER 200 LBS. 45.00-48.75; 2's and 4's 49.00-51.50.

SOWS OVER 450 LBS. 46.75-48.00; UNDER 450 LBS. 45.75-47.25; 2s AND 4s ALL WEIGHTS 42.00-45.00. BOARS: 41.50-43.50.

FEEDER PIGS. BY THE HEAD 20-25 LBS. 17.00-24.00; 30-45 LBS. 26.00-36.00.

SHEEP EWES AND BUCKS: 17.00-30.00.

LAMBS: CHOICE 40-55 LBS. 82.50-90.00. CHOICE 70-100 LBS. 56.00-72.50. GOOD 70-100 LBS. 50.00-55.00; MEDIUM ALL WEIGHTS 41.00-49.00.

GOATS: BY THE HEAD, LARGE 67.50-87.50; SMALL MEDIUM 31.00-58.50.

SALE EVERY TUES. EVE. RABBITS, POULTRY AND EGGS 5 P.M. LIVESTOCK 7 P.M.

STATE-GRADED FEEDER PIG SALE FRI. NOV. 9 1:30 P.M.

PIGS TO 38.00.
HEIFERS 48.00-54.00.
MEDIUM STEERS 52.00-66.00.
FEEDER STEERS TO 75.00.
BULLS 50.00-65.00.
COWS GOOD 46.00-51.00.
COWS MEDIUM 43.00-46.00.
COWS POOR OR SMALL 38.00 AND DOWN.
CATTLE MARKET UNSETTLED.
CALF MARKET SOME EASIER.
HORSES TO 450.00.
GOATS TO 80.00.
HERD OF 39 HEREFORDS SELLING NOV. 5.

Valley Livestock

Athens, Pa.

Monday, Oct. 29, 1990

Report supplied by auction

HOLSTEIN HEIFER CALVES TO 162.50.

VEAL CALVES TO 90.00.
VEALER BULL CALVES TO 150.00.
SLAUGHTER CALVES 75.00 AND DOWN.

GRASSERS & FEEDERS 50.00-75.00
LAMBS 50.00-62.00.
SHEEP 14.00-28.00.

HOGS 200 TO 250 LBS. 54.00-57.50.
SOWS 42.00-46.00.
BOARS 38.00-44.00.

North Jersey Livestock

Hackettstown, NJ

Tuesday, Oct. 30, 1990

Report supplied by auction

CALVES 20-125.

COWS .30-.54% .

EASY COWS .06-.45.

HEIFERS .36% -.65.

BULLS .40-.70.

STEERS .59-.75.

HOGS .30-.53.

BOARS .40.

SOWS .42-.44% .

SHEEP .09-.44.

LAMBS EACH 15.00-61.00.

LAMBS PER LB. .23-.92.

GOATS EACH 37.00-100.00.

KIDS EACH 10.00-57.00.

TOTAL 1,222.

HAY, STRAW & GRAIN SALE
Every Thursday at 1 p.m.
Auction will continue all year long
Vintage Sales Stables, Inc.

(Rt. 30, 10 miles east of Lancaster in Paradise, PA)

For info. L. Robert Frame, Sr. president
717-442-4181 business
215-458-8518 home Glenn S. Frame Mgr.

CRIPPLED AND DISABLED COWS, STEERS & BULLS

Slaughter Under USDA Inspection

FREE CALL
1-800-234-COWS (2697)
215-286-9400
Wayne Taylor

Lebanon, Berks, Lancaster & Chester Co.

TWO DAIRY HERD DISPERSALS
WED. NOV. 7
11:00 A.M.

NEW HOLLAND SALES STABLES INC. THE ACTION AUCTION

SPECIAL FEEDER CATTLE SALE
FRI. EVE. NOV. 23
7:00 P.M.

LIVESTOCK IS OUR ONLY BUSINESS

MONDAY

SLAUGHTER HOGS

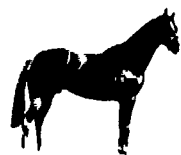


EARLY BIRD HOG SALE
7:30 A.M.

Sell Your Hogs At New Holland Sales Stables, Inc. See them weighed, sold and pickup your check.

10:00 AM

HORSES MULES



1:30 PM

BEEF SALE



SHEEP



CALVES

WEDNESDAY

DAIRY HEIFERS COWS
11:00 AM
COW SALE 12:00 NOON



We have the usual run of 50 to 100 Heifers, all ages. Loads of fresh cows and springers from our regular shippers. Also some local fresh cows and springers.

1:30 P.M.

FEEDER PIG SALE

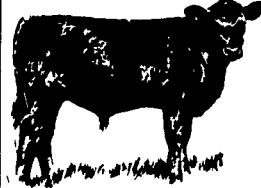


Pigs are accepted after 6:30 A.M. State graded from 8 to 12 Dairy Barn and Feeder Pig Barn are cleaned and disinfected weekly for your protection.

THURSDAY

Beef Auction
10:00 A.M.

BULLS STEERS BEEF COWS



STOCKERS & FEEDERS

1:30 P.M.

GOATS CALVES

NEW HOLLAND SALES STABLES, INC.

12 Miles East of Lancaster Off Route 23, New Holland, Penna.

MANAGERS

Norman & David Kolb - 717-397-5538

Field Representatives

Luke Eberly - 215-267-6608 738-1865

Homer Eberly - 215-267-3047

Sale Barn Officer Manager
Roger Floyd - 717-354-4341

Order Buyer
Paul Good - 215-445-6662

Feeder Pig Representative
Mel Hoover - 717-354-8397