

# Farm City Set For Full Agenda

(Continued from Page A26)

banquet, the people involved in farm-city week work exchange program provide recaps of their day in another's shoes.

Also during the banquet, the shawl made at the mall show is to be auctioned off to raise money for next year's farm-city week activities. Door prizes are to be awarded.

Other counties which provided Farm-City Week program schedules to Lancaster Farming for publication include Lancaster, Berks, Franklin and Chester.

All four of those counties are planning open-house farm tours. Berks county also has a banquet scheduled.

## Lancaster County Tours

In Lancaster County, nine of farms are slated for Saturday, Nov. 17, and Sunday, Nov. 18. Details of the locations of the farms will be in the next issue of Lancaster Farming.

The tours are basically open invitations to visit some of Lancaster County's different agricultural operations.

DDL Farm is owned by the Landis family. The 70-acre horse farm has been one of the more popular sites during Farm-City

Week. On Saturday only, \$1 pony rides are to be offered by the Saddle Clinches 4-H club, all proceeds are to go to the "Misty of Chincoteague" Foundation. The farm has facilities to house 27 horses. There are seven Belgians, three Perchons and 17 boarding horses.

Landis Bros. John Deere farm machinery is located along Route 72. New farm machinery will be on display. The equipment company has been in business since 1920 and offers an opportunity to browse and check price tags which will be on the machines during the two days.

Dairy Farm of Mr. and Mrs. John Landis is located at 1801 Colebrook Road, near the intersection of State Road. The 270-head milking herd operation also maintains about 200 head of replacement cattle. Those who wish to see cows milked can visit between 1 p.m. and 5 p.m. on both days.

Sporting Valley Turf Farms Inc., is a new addition to the type of agricultural operation in business today. The farm maintains 400 acres of turf grass and is a cultivated sod production wholesale grower. The farm is at the intersection of Colebrook and Junction roads.

Mr. and Mrs. Daniel Rohrer and son operate a 70-acre farm with 20 acres of orchard and 100 head of Angus and Angus-cross bred beef cattle. Rohrer's Farm Mart & Fruit Orchard is a century farm (been in the same family for at least 100 years) and produces raspberries, apricots, cherries, plums, nectarines, apples, pears and peaches. Located along Junction Road, near Colebrook Road.

Penn State University Experimental Farm is managed by John Yocum. The place is PSU's southeastern research location and work is done on field crops, plant breeding, pest control soil fertility, and soil management. The farm is located along Auction Road, near Shenck Road.

Balmer Bros. Hog Operation is a 1,200 hog finishing house. The operation finishes about 3,600 head of hogs a year. The operation is located along Breneman Road, near Rt. 283.

Fairveiv Farms is owned by Mr. and Mrs. John Wogelmuth and sons. This Mt. Joy area poultry farm is home to 100,000 Leghorn laying hens and is located along Orchard Road, near Schwanger Road.

Bill and Peggy Longenecker, also of Mt. Joy, is a commercial breeding facility of some 300 PLY-pay and Suffolk sheep. In addition,

Bill has been a reverend at Stevens Hill Community Church for the past 42 years. The farm is located along Risser Road near Mt. Pleasant Road.

## Berks County

Berks County has been a winner of the statewide Farm-City Week program contest. However, officials said they prefer not to create as heavy a schedule as Lebanon County.

"We don't do a lot of things during Farm-City Week," said Clyde Myers, extension agent for Berks County. "We like to spread our activities throughout the year."

The two events Berks County does in November for Farm-City are holding a banquet and listing a number of farms that are open to the public for a specific time.

This year the Berks County Seventh Annual Farm-City Banquet is being held at the Riveredge Restaurant on Nov. 8. The restaurant is located along Rt. 183, south of Reading Airport.

Myers said he expects about 400 people to attend the evening festivity. On the menu is a choice of stuffed pheasant breast or filet mignon wrapped in bacon. The price of the meal is \$14 per person.

Those interested in purchasing tickets should contact Myers

immediately.

The evening begins at 6 p.m. with a social hour. Two highlights of the program are presentations by the people who have been involved in the county's work exchange program between city people and farm people and the presentation of awards.

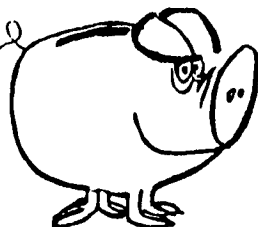
There will also be a quilt raffle to raise money for the Farm-City program. The quilt was made by the Pomona Grange.

Berks County farm tours are set for Nov. 11 and Nov. 12 from 1 p.m. to 5 p.m. include 11 participating operations. This is the 17th year the farm tours have been offered. They are sponsored by the Berks County Farmers Association.

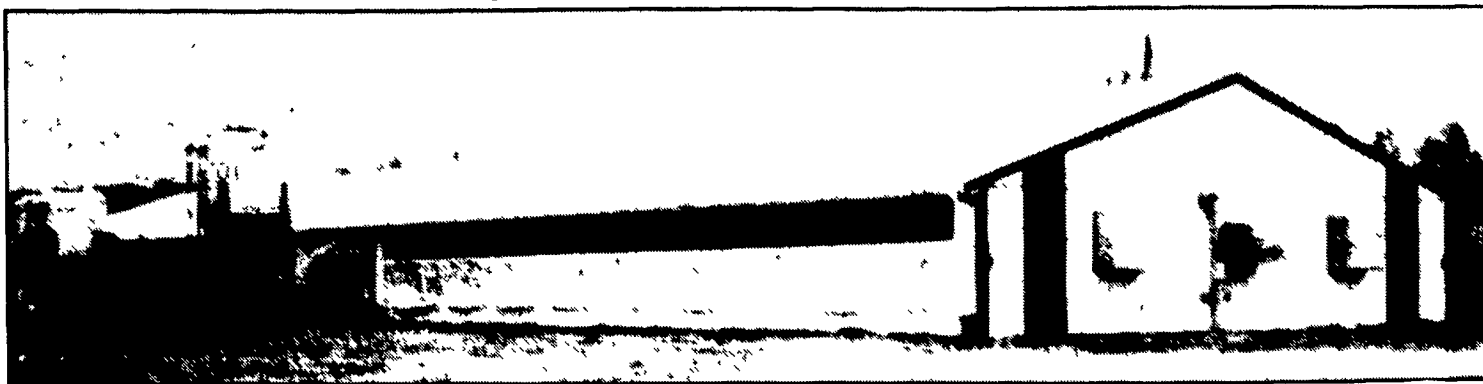
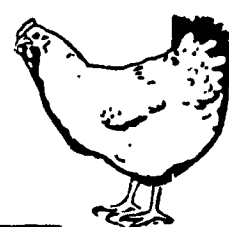
or farms. The farms and businesses involved are:

- Wilbur and Arlene Hershey, Bethel.
- Keeney and Zigler Apiaries, Bethel.
- Way-Har Farms, Bernville.
- Calvaresi Winery, Bernville.
- Booncroft Farms, Ole.
- Skyline Acres Inc., Shartelsville
- Temple Greenhouse, Temple
- Willow Creek Animal Hospi-

(Turn to Page A30)



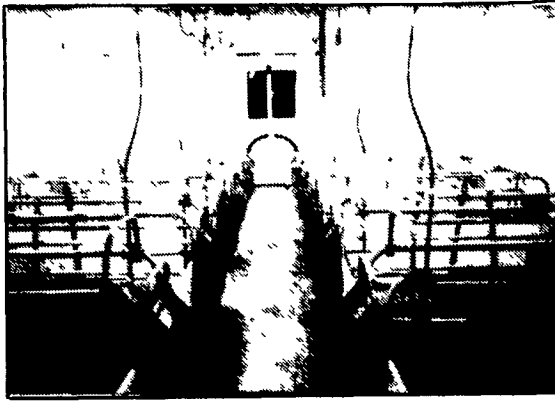
## LOOKING FOR A GUARANTEED INCOME? Talk To Us About A Family Size Swine Or Poultry Operation! (Contracts Available)



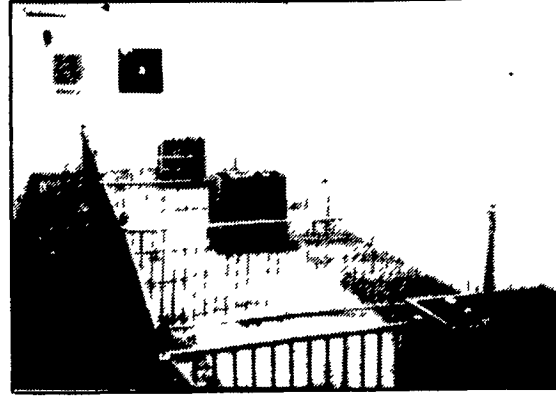
Farrow Thru Feeder Pig Swine Facility



Gestation



Farrowing



Nursery

INTERIOR VIEW

### THIS UNIT FEATURES:



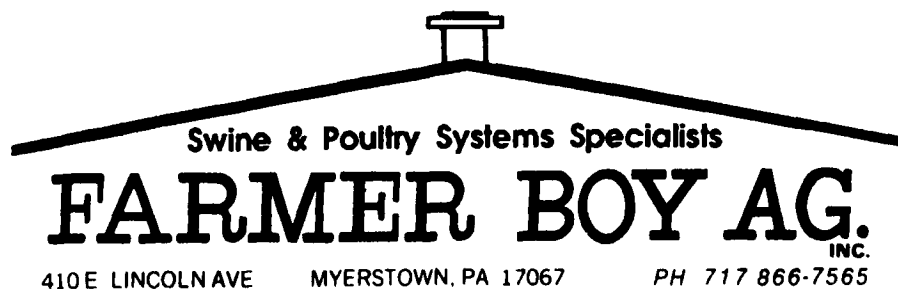
Hot-Dipped Galvanized Solid Steel Stabling

• **ALUMAX** Building Products



Bins, Augers And Automatic Sow Feeding Systems

Let FARMER BOY AG's Experienced Staff Design To Build, Remodel Or Repair Your Facility To Your Specifications.



410 E LINCOLN AVE MYERSTOWN, PA 17067 PH 717 866-7565

HOURS: Monday Thru Friday 7:00-5:00  
Saturday 7:30-11:30

24 Hour Service