

Lancaster Co. Livestock Market Auctions

Lancaster County Weekly
Lancaster, Pa.
Friday, October 26, 1990

	Cattle Calves	
This Week	3700	1840
Last Week	3752	1806
Last Year	4150	1725

Lancaster Livestock Auction

Lancaster, Pa.
Monday, October 22, 1990
Cattle Calves Hogs Sheep Goats

Monday's Auction	Cattle	Calves	Hogs	Sheep	Goats
1004	124	218	1021	211	
Last Monday's Auction					
1074	93	158	772	373	
Last Year's Auction					
1072	113	470	956	416	

CATTLE: Slaughter steers steady; slaughter heifers fully steady; cows 1.00 lower, extremes 2.00 lower; bullocks steady; yield grade 1 bulls steady instances 1.00 lower, yield grade 2 mostly 1.00 lower. Supply included 51% slaughter steers, 15% slaughter heifers, 20% cows, and 14% bulls.

SLAUGHTER STEERS: Choice 2-3 few 4 1100-1475 lb 74.50-77.60, mainly 75.50-77.00; couple Choice 2 1100-1350 lb 77.50-79.00; Select and low Choice 2-3 1050-1450 lb 72.00-75.35; Select 2-3 1050-1350 lb 68.00-72.00. **HOLSTEINS:** Choice 1080-1450 lb 67.50-69.50, couple high Choice and Prime 70.50-73.50; couple Select 1125-1525 lb 64.00-65.75.

SLAUGHTER HEIFERS: Choice 2-3 980-1250 lb 71.50-74.60; couple Choice 2 1025-1225 lb 74.75-75.75; Select 2-3 925-1200 lb 68.75-71.50; Select to low Choice 2-4 950-1200 lb heiferettes 55.00-59.00.

COWS: LO DRESSING BULK HI DRESSING Breaking Utility & Commercial 2-4 51.50-54.00 54.00-55.00 Cutter & Boning Utility 1-2 49.00-51.00 51.00-53.50 53.50-54.50 Canner and low Cutter 46.50-47.00 47.00-49.00.

BULLOCKS: Choice 2-3 1050-1350 lb 66.50-69.75, couple 72.00-75.25; Select 1-3 950-1200 lb 59.00-64.25.

BULLS: Yield grade 1 1350-2000 lb 63.25-69.00, few 1375-2310 lb 71.00-76.25; yield grade 2 1000-1500 lb 60.00-64.25, low dressing 58.75-60.00.

VEAL CALVES: Vealers steady; slaughter calves 5.00-8.00 lower. Demand fair for Holstein bulls to return to farm.

VEALERS: Couple Choice and Prime 240-325 lb 105.00-118.00; high Good and low Choice 140-300 lb 80.00-95.00, 80-115 lb 63.00-70.00.

SLAUGHTER CALVES: Good and Choice 300-500 lb 66.00-79.00, few Good 60.00-65.00.

RETURNED TO FARM: Bulk 100-125 lb Holstein bulls 110.00-132.00, 90-95 lb 100.00-115.00; small frame 85-115 lb 80.00-105.00.

HOGS: Compared to last Wednesday barrows and gilts 1.50-2.00 lower; sows 2.00-2.50 lower.

BARROWS AND GILTS: US 1-2 210-255 lb 54.50-55.50 US 1 215-235 lb 56.00-56.50. US 1-3 210-260 lb 54.00-56.00.

SOWS: US 1-3 300-650 lb 45.00-47.50. Few Medium 300-450 lb 42.00-45.00.

BOARS: Bulk 350-700 lb 43.50. Few 200-250 lb 46.50.

SHEEP: Slaughter lambs 3.00-5.00 lower, slaughter ewes firm, instances 5.00 higher

Vintage Livestock

Paradise, PA
Oct. 23, 1990

CATTLE 869...USDA...(Supply included 42% steers, and 50% cows)...Compared with Monday's market: Slaughter steers unevenly steady; Heifers not tested, Cows steady to weak; Bulls steady. Mixed Choice & Prime 2-3, 1125/1450 lbs sl steers 78.25-79.50, Choice 2-3 few 4, 1100/1425 lbs. 75.00-78.00, mainly 75.35-77.50, few Choice 3-4, 1450/1585 lbs. 73.75-75.75, few Choice 2-3 1000/1150 lbs. 74.00-75.00, Select & low Choice 2-3, 1100/1350 lbs. 72.00-75.00, Select 2-3 1000/1350 lbs. 68.50-72.00. Breaking Utility & Commercial cows 2-3, 52.00-54.75, high dressing 54.75-57.25, Commercial 3-4, 48.00-52, Cutter & Boning Utility 1-2, 50.00-53.50, high dressing 54.00-56, low dressing 48.00-49.75, Canner & Low Cutter 46.00-48.50, low dressing 44.00-46.00. Yield Grade No. 1, 1750/2210 lbs sl bulls 63.50-66.25, YG #2, 1100/1970 lbs. 56.75-61.75.

CALVES 1027.. Supply included 736 in graded sale of which 86% sold to return to farm.. Vealers weak to 5.00 lower, very few going to slaughter. High Good & low Choice 150/190 lbs. 79.00-90.00, 80/110 lbs. 53.00-60.00, Standard & low Good 60/75 lbs. 35.00-50.00. Farm Calves: Holstein Bulls 100/125 lbs. 116.00-124.00, 100/105 lbs. 128.00-131.00, 95 lbs. 114.00, 80/90 lbs. 84.00-90.00, Small frame 100/115 lbs 90.00-96.00, 90/95 lbs. 81.00-83.00, 75/85 lbs. 60.00-75.00; Hol. Heifers 100/115 lbs. 152.00-156.00, 80/95 lbs. 112.00, Small frame 70/105 lbs. 92.00-102.00.

SHEEP 18...Insufficient volume to fully test trend; altho few Good 65/115 lbs. wool slaughter lambs 37.00-45.00. Few Slaughter sheep 12.50-22.50 - all cwt.

GOATS 0. No Market test.

WOOLED LAMBS: Choice and Prime 80-110 lb 55.00-60.00, 60-80 lb 55.00-65.00, few 40-55 lb buck lambs 65.00-85.00; Good to low Choice 75-90 lb 50.00-55.00.

SHORN LAMBS: Choice and Prime 80-105 lb with #1 Pelts 60.00-65.00.

SLAUGHTER EWES: Utility and Good 15.00-35.00; Yearlings and two-year olds 35.00-45.00.

GOATS: All goats sold by the head. Large Billies 75.00-100.00, with around 10 head 100.00-125.00; thin 50.00-65.00. Large Nannies 50.00-60.00. Medium 50.00-60.00, thin 40.00-50.00. Small, mainly kids, 30.00-40.00, few thin 20.00-30.00

Lancaster Livestock

Wednesday, Oct. 24, 1990

Cattle Calves Hogs Sheep Goats

Wed's Auction	Cattle	Calves	Hogs	Sheep	Goats
34	0	308	0	0	
Last Wed's Auction					
16	0	315	0	0	
Last Year's Auction					
19	2	264	0	0	

CATTLE: Insufficient volume of any one class to fully test trends.

SLAUGHTER STEERS: Few Select and low Choice 2-3 1150-1435 LB 71.75-75.25.

COWS: Few Breaking Utility and Commercial 2-4 51.50-55.25; Few Select and Choice 2-3 1300-1600 lb heiferettes 60.50-63.00.

VEAL CALVES: Insufficient volume for a market test.

HOGS: Small supply barrows and gilts 1.00 higher; sows 1.00-2.00 higher.

BARROWS AND GILTS: US 1-2 210-255 lb 55.50-56.50

SOWS: US 1-3 300-650 lb 47.00-50.00. Medium 1-2 300-500 lb 44.00-46.50. Few Medium 300-450 lb 42.00-44.00.

SHEEP: No market test.

GOATS: No market test.

Valley Livestock

Athens, Pa.

Monday, Oct. 22, 1990

Report supplied by auction

HOLSTEIN HEIFER CALVES 140.00-170.00.

VEAL CALVES TO 100.00.

VEALER BULL CALVES 125.00-162.50.

SLAUGHTER CALVES 75.00 AND DOWN.

GRASSERS & FEEDERS 50.00-88.00

LAMBS 50.00-55.00.

SHEEP 14.00-26.00.

HOGS 200 TO 250 LBS. 52.00-58.50

SOWS 40.00-43.00.

BOARS 35.00-46.00.

PIGS 20.00-38.00

HEIFERS 52.00-58.00.

MEDIUM STEERS TO 70.00.

FEEDER STEERS TO 88.00.

BULLS TO 62.00.

COWS GOOD 48.00-54.00.

COWS MEDIUM 44.00-48.00.

COWS POOR OR SMALL 40.00 AND DOWN.

CATTLE MARKET CHEAPER.

CALF MARKET CHEAPER.

HORSES TO 380.00

PONIES NONE.

GOATS TO 60.00

MILK
AMERICA'S HEALTH KICK

LEBANON VALLEY LIVESTOCK MARKET, INC.

1 mile East of Fredericksburg along Rt. 22
PHONE JONESTOWN 865-2881

Flea Market Auction every Tuesday at 12:30. Tools, Eggs, Produce, etc.

Buyers & Sellers Welcome



Open 24 hours a day

365 days a year

(717) 394-2611

AUCTIONS

MONDAY

9:00 A.M. — Slaughter Bulls, Heifers, Steers, Cows

10:00 A.M. — Goats, Veal Calves, Lambs

12 Noon — Slaughter Hogs

WEDNESDAY

8:00 A.M. — Slaughter Hogs

10:00 A.M. — Slaughter Bulls, Heifers, Steers, Cows

11:00 A.M. — Veal Calves, Lambs

FRIDAY

11:00 A.M. — Stocker and Feeder Cattle

SATURDAY

8:00 A.M. — Slaughter Hogs

Next Feeder Cattle Sale
Fri., Nov. 2 11:00 A.M.

LANCASTER STOCKYARDS, INC.

1147 Lititz Pike Lancaster, Pennsylvania 17601
Serving The Community For 90 Years

VINTAGE SALES STABLES, INC.



COMPETITION IS THE ADVANTAGE MARKET YOUR LIVESTOCK THE VINTAGE WAY



TUESDAY 11:00 A.M.

SLAUGHTER CATTLE AUCTION— STEERS, BULLS, HEIFERS, COWS, FEEDER CATTLE

7:30 P.M.

CALVES, SHEEP, GOATS * GET CALVES IN EARLY— OUR STATE GRADER STARTS AT 1:00 P.M.

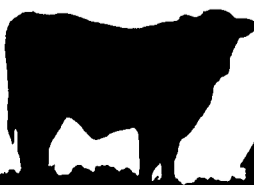
★ NEW ★

FEEDER & STOCKER ORDERS NOW BEING TAKEN

"A VINTAGE CUSTOMER IS A HAPPY CUSTOMER"

L. ROBERT FRAME, SR., PRESIDENT
GLENN S. FRAME, MANAGER
BUS (717) 442-4181
BUS (717) 768-8204
HOME (215) 458-8518
IRWIN MARTIN, FIELD REP. (717) 733-7434
KENNETH E. HERSHEY, FIELD REP. (717) 442-4874

TRUCKING SERVICE AVAILABLE—LOCAL & LONG DISTANCE (RT. 30, 10 MILES EAST OF LANCASTER IN PARADISE, PA)



B&R CATTLE CO.
RD 1, Marietta, PA 17547

Office Phone— (717) 653-8164
Specializing In Stockers & Feeders

JOHN BOWMAN
Ph (717) 653-5728
RON RANCK
Ph (717) 656-9849

HAY, STRAW & CORN — SALE —

Every Friday At 11 AM

GREEN DRAGON MARKET & AUCTION

RD No. 4 Ephrata, Pa. 717-738-1117
1 mile North of Ephrata on N. State St.

Out of State Buyers - Cash or Certified Check Only