

Phila. Vegetables

Oct. 24, 1990

PARTLY CLOUDY 58-69.
ARTICHOKES LOWER CA ctn 24s few 18.00 36s 14.00-15.00 48s 10.50-11.00.
ASPARAGUS ABOUT STEADY CA 15-lb ctn lge 22.00 crt exlge & lge ord cond 5.00-6.00 CHILE 11-12-lb crt exlge 18.00 poor cond 2.00-3.00 lge 18.00 bchd 12s exlge 18.00.
BEANS ABOUT STEADY various bu containers Round Green type unless otherwise stated SC 14.00 few hgr VA fair cond 8.00.
BEETS STEADY NJ crt bchd 12s 5.50 topped bubkt few 8.00.
BROCCOLI LOWER CA ctn bchd 14s 9.00-11.00 mos 10.00 few 11.00 one label few 13.00 fair qual 7.00-8.00 fair cond 5.00 18s fair cond 5.00 lse crowns 14.00-14.50 ME ctn bchd 14s 8.00-10.00 18s 11.00-12.00 NJ ctn bchd 14s 8.00 CANADA ctn bchd 18s 11.00.
BRUSSEL SPROUTS CA 25-lb ctn 14.00-16.00.
CABBAGE ABOUT STEADY 1-3/4 buctn & crt med green unless otherwise stated NJ 4.00-5.00 one label 5.50 Savoy type 5.00 PA 4.00 few hgr & lwr Red 7.00 NY 5.50 50-lb sks lge 3-3.50 mos 3.00 CANADA 4.50-5.00 Savoy type & Red 7.00.
CARROTS ABOUT STEADY 48-1 lb film bags in film sacks CA med-lge 8.00-9.00 few 9.50 occ 10.00 MI med 6.50-7.50 50-lb sacks loose jumbo CA 5.00-6.00 fair cond 4.00-5.00 WI 5-5.50 MI 6.00 CANADA 5-5.50 mos 5.50 ctn bchd 24s CA 10.00 mini type CA ctn bchd 24s 11.00.

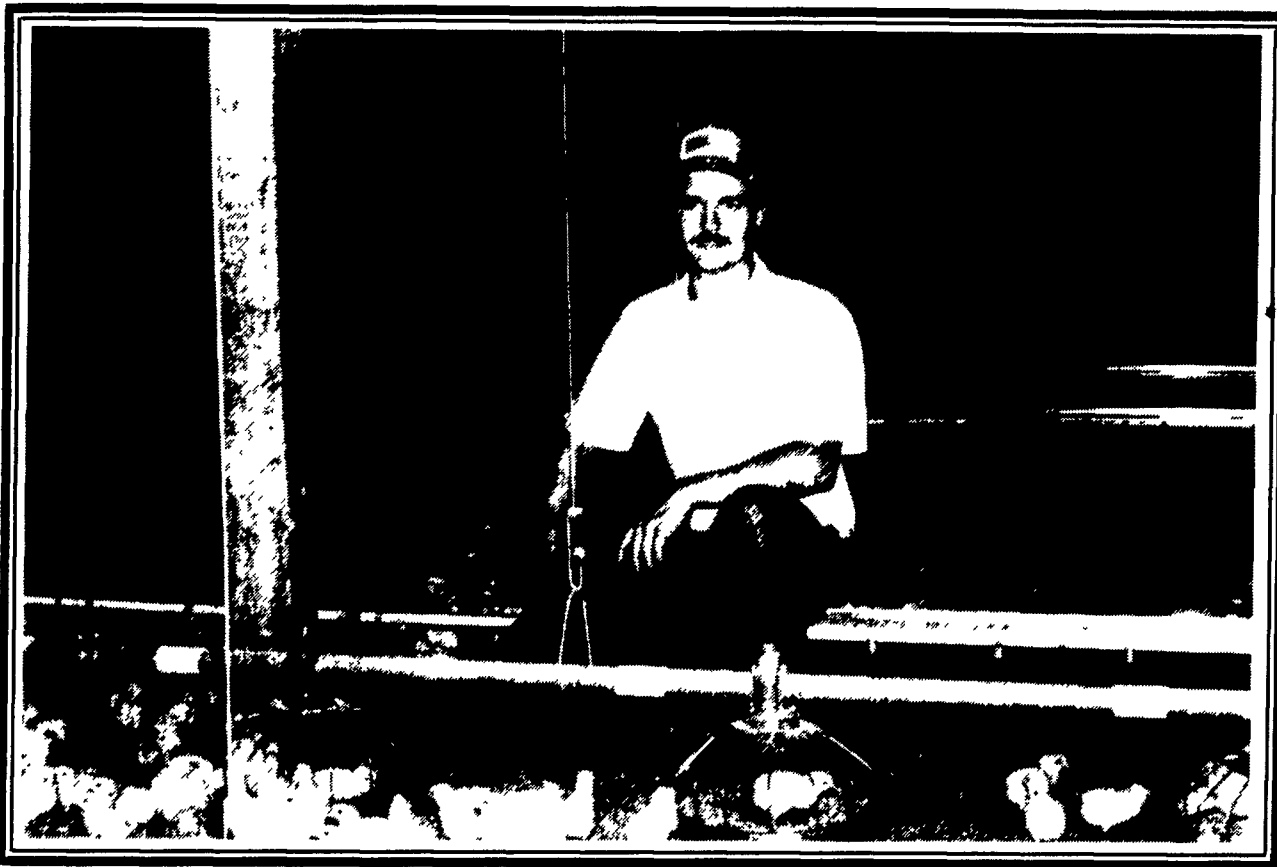
CAULIFLOWER ABOUT STEADY CA ctn film wrpd 9s 10.00 12s 10.00-12.00 few loas 9.00 NYLI Long Island crt jacket pack 12s fair cond 6.00 CANADA flat ctn jacket pack 9s ord cond 2.00-4.00.
CELERY HIGHER CA ctn 1-1/2 dz 11.00-12.00 fair cond 7.00-8.00 2 doz 12.00-13.00 mos 13.00 some 11.50 fair cond 7.00-8.00 2-1/2 doz 12.00-13.00 mos 12.50-13.00 fair cond 7.00-8.00 Hearts film wrpd 18s 12.00 MI ctn 1-1/2-2-1/2 dz 7.00-8.00 CANADA ctn CD#1 2-1/2 dz 9.00.
CHINESE CABBAGE ABOUT STEADY NJ celery crt 6.00-7.00 few 8.00 Nappa 1-3/4 buctn 6.00 CA 50-lb ctn Bok Choy 13.00 Nappa 14.00 poor cond 1.00-3.00 30-lb ctn Nappa 8.00.
CORN HIGHER wirebound crt approx 4-1/2 doz FL Yellow 8.00-9.00 White 8-8.50 mos 8.50 fair cond 3.00-4.00 few 2.00 Bi-color fair cond 3.00-4.00 few 2.00 GA White ord cond 2.00-3.00.
CUCUMBERS ABOUT STEADY 1-1/9 bucrts & ctms waxed medium unless otherwise stated FL 12.00 fair appear 8.00-10.00 mos 10.00 fair qual 6.00-8.00 ord cond 1.00-2.00 GA fair appear 8.00-10.00 NC fair appear 9.00 fair qual & appear 7.00.
DAIKON CA 40-lb ctn 14.00.
EGGPLANT ABOUT STEADY GA 1-1/9 buctn med 6.00-7.00 NJ 1-1/9 buctn med fair qual 5.00-6.00 FL 1-1/9 buctn sml fair qual 5.00-6.00.
ENDIVE STEADY NJ 1-1/9 buct & ctn 5.00-6.00 mos 5.00 few 7.00 CA ctn 24s 10.50 BELGIUM 10-lb ctn Witloof type 21.00.
ESCAROLE STEADY NJ 1-1/9 buct & ctn 5.00-6.00 mos 5.00 few 7.00 CA ctn

24s 10.50.
GARLIC New Crop CA 30-lb ctn per lb Super Colossal 1.07 Colossal 1.03 Super jbo .97 exjbo .88 Late Keeping Colossal 1.00 Super jbo 1.00 Extra jbo .88 CHINA 22-lb ctn per lb Super jbo .75.
GREENS ABOUT STEADY crt & ctn approximately 1-1/2 bu bchd unless otherwise stated & Rape 5.50 NJ Collards, Turnip Tops, Kale & Rape 5.00-6.00 Mustard 6.00 CA 24s Kale 8.00 Red Kale 12.00-12.50 20-lb ctn Broccoli Rabe fair cond 20.00-22.00 one label lse 29.00-30.00.
LEEEKS STEADY NJ crt bchd 12s 8.00 CA ctn bchd 12s 10.50-11.00.
LETTUCE HIGHER ICEBERG ctn 24s unless otherwise stated CA Wide range in qual & appear 14.00-16.00 mos 15.00 30s fair cond 6.00-7.00 film wrpd 14.00-15.00 30s 12.00-13.00 mos 12.00 NJ few 10.00 ROMAINE CA LOWER, NJ ABOUT STEADY CA 24s ctn 16.00-17.00 mos 17.00 few 19.00 sml 13.00-14.00 crt 19.00-20.00 mos 20.00 few 21.00 NJ ctn 24s few 10.00 crt 24s 9.00 BIG BOSTON CA ctn 24s 8.00 few 9.50 BIBB NJ sml crt 24s 5.00-6.00 LEAF wide range in price CA ctn 24s 9.00-11.00 few 13.00 Red 8.00-11.00 few 13.00.
MUSHROOMS STEADY PA 4-qt bkt med-lge 5-5.50 sml-med 4-4.50 10-lb ctn med 9-9.75 mos 9.00 lge 11.00-11.50 mos 11.00 packages 10-12 oz 9-9.50 10.00-12.00 3-lb ctn Shii-take 17.00-18.00 fair qual 10.00-12.00.
OKRA SUPPLIES LIGHT GA buhmprs & crts sml-med few 28.00.
ONIONS-GREEN CA LOWER, OTHERS ABOUT STEADY ctn bchd 48s

unless otherwise stated NJ 14.00-15.00 OH 14.00 CA 18.00 fair cond 15.00.
PARSLEY PLAIN LOWER, OTHERS STEADY bchd 5 doz Curly unless otherwise stated NJ crts & bubkt 7.00-8.00 mos 8.00 few 10.00 Plain 7.00-9.00 few 10.00 CA ctn 10.50.
PEAS-GREEN NO SUPPLIES.
PEAS-SOUTHERN SUPPLIES LIGHT GA buhmprs & crts Purple Hull type few 12.00.
PEAS-SUGAR ABOUT STEADY 10-lb ctn per lb CA 1.70-1.80 fair qual 1.40-1.50 GUATEMALA 1.80 some 1.60-1.70.
PEPPERS ABOUT STEADY 1-1/9 bucrts & ctms Calif Wonder type Green unless otherwise stated NJ lge 10.00-12.00 med 8.00-10.00 mos 9.00 Mixed Red med-lge 8.00 med 5.00-6.00 Red lge fair qual 10.00 Cubanelle lge few 14.00-15.00 PA lge 10.00-12.00 fair cond 6.00-7.00 med 8.00-9.00 fair cond 6.00 VA & MD med 9.00 few 10.00 CA exlge 17.00 lge 14.00-16.00 mos 15.00 med 12.00-13.00 few 15.00 sml-med 13.00 FL Cubanelle lge 15.00 NC lge 15.00-16.00 med fair qual 6.00-7.00.
RADISHES ABOUT STEADY ctn Red 30-6 oz film bags unless otherwise stated FL 3.75-4.00 14-1 lb film bags 3.75 MN 3.00.
RHUBARB NO SUPPLIES.
RUTABAGAS LOWER CANADA 50-lb ctn CD#1 waxed med 6.00-7.50.
SPINACH ABOUT STEADY NJ Savoy type bubkt 5.00-6.00 bchd 7.00-9.00 mos 8.00 few 6.00.
SQUASH 1/2 & 5/9 bucrts & ctms unless

otherwise stated FL Zucchini sml 12.00 med 10.00 fair cond 5.00-6.00 Yellow Straightneck sml 14.00 GA Zucchini sml 12.00 med 10.00 CA 28-lb ctn Zucchini med 10.00.
SWEET POTATOES SLIGHTLY LOWER NC 40-lb ctn US#1 uncured Jewel type med 6.50-7.00 mos 7.00 few 7.50 NJ 1/2 buctn uncured Yellow Jersey med 7.00-8.00 Red Jersey med 12.00.
TOMATOES LOWER 25-lb ctn Pink to Light Red 85% or better US#1 qual unless otherwise stated FL fair qual 5x6s 9.00-10.00 6x6s 8.00-9.00 CA 5x6s 9.00-11.00 6x6s 8.00-9.00 ord cond 3.00-4.00 few hgr 6x7s 7.00 ord cond 3.00-4.00 few hgr fair qual 5x6s 8.00-9.00 6x6s 6.00-7.00 Vineripe 2-lyr ctn 4x4s 10.00 4x5s 10.00 fair qual 7.50 1-lyr ctn 4x4s 8.00 4x5s 8.00 VA fair qual 5x6s 4.50 6x6s 4.00 fair cond 3.00 ord qual 5x6 4.50 6x6s 4.00 fair cond 3.00 6x7s 3.50 fair cond 3.00 GA Vineripe no grade mark med fair cond 2.50 NJ viner-ipe no grade mark lge fair cond 5.00-6.00 med fair cond 2.00-3.00 PA viner-ipe no grade mark lge 6.00-7.00 fair cond loas 4.00 REPACKED LOCALLY CA 5x6s 13.50 6x6s 11.50 6x7s 10.00 PLUM TYPE FL NO SALES REPORTED CHERRY TYPE flats 12-1 pint trays CA fair cond 7.50 FL Red 6.00-8.00 mos 7.00 ord cond 2.00-4.00 mos 2.00 NJ film wrpd fair cond 5.00.
TURNIPS Topped PA 25-lb film bags sml-med 5.00.
VEGETABLES-OTHER ITALY 1-lyr ctn Radicchio 12s 8.00-10.50 9.00.
WATERCRESS FL ctn bchd 24s 10.50-11.00.

Prove it yourself



"I PROVED IT FOR MYSELF AND FOUND OUT THAT BIG DUTCHMAN PAN FEEDERS DELIVER THE BEST FEED CONVERSION"

Brian Grimm of Willow Street, PA Has Just Installed The Big Dutchman Pan Feeding System In His Second Broiler House.

PROVE IT YOURSELF!

BUY THE BIG DUTCHMAN "ORANGE ONE" PAN FEEDER FOR YOUR BROILER HOUSE



Big Dutchman.



HENSHEY EQUIPMENT COMPANY, INC.

Designers of Quality Systems for Poultry, Swine and Grain Handling

SYCAMORE IND. PARK
 255 PLANE TREE DRIVE
 LANCASTER, PA 17603
 (717) 393-5807

Route 30 West
 at the
 Centerville Exit.

Tractors Mfg.'s 1 Year Warranty **Belarus**

Barn Equip.	MODEL	HP	CASH
	250	31	\$5,395
	T25 Backhoe Loader	31	\$16,922
	400 AN	57	\$9,848
	T42 4WD Backhoe Loader	57	\$22,975
	400 AN 4WD	57	\$11,495
BERG	505	70	\$10,995
BUTLER	S25A 4WD	70	\$12,825
FARMWAY	562 4WD w/Cab	70	\$13,479
FIBERDOME	572 4WD w/Cab	70	\$13,975
J-STAR	820 4WD	85	\$14,895
JAMESWAY	822 4WD w/Cab	85	\$16,222
STARLINE	922 4WD w/Cab	100	\$23,142
	Engine For Air Skid Loader	31	\$3,650
	Plant Placement Cooled Power		
	Plant	57	\$4,995
	Toy Tractor 1/43 Scale		\$15.95

ROVENDALE SUPPLY
 Exit 31, I 80 to I-180 MF 8-7,
 to Watsonstown Exit (You Are There!) Sat. 8-5
 Ph. 717-538-5521 or 742-7521 Open
 Toll Free PA 1-800-732-DALE Holidays

BIG PUMP!

LITTLE PRICE!

The first time you use this new shredder pump you'll know it's a real Nesseth! It's all new, it's tough and it features our high-capacity Starburst impeller that rips even the hardest packed material apart to form a smooth homogenized mixture for easy handling.
 Convenient, easy to maneuver and built to last.

Nesseth
 by J-STAR

RENTAL UNITS AVAILABLE
 ★ STAR SILOS ★
 717-866-5708 After Office Hours Call:
 630 E. Lincoln Avenue Bob Brubaker 717-464-3136
 Myerstown, PA 17067 John Swope 717-933-4758

STAR SILOS 630 E. Lincoln Ave Myerstown, Pa 17067

Name _____
 Address _____
 City/State _____
 Zip _____ Phone _____
 Best Time To Call _____ County _____

Please send information on:

<input type="checkbox"/> 1. Bottom Unloading Concrete Silos	<input type="checkbox"/> 4. Manure Pits
<input type="checkbox"/> 2. Top Unloading Concrete Silos	<input type="checkbox"/> 5. Feed Bunks
<input type="checkbox"/> 3. Upright Bunker Silos	<input type="checkbox"/> 6. Cattleguards
	<input type="checkbox"/> 7. Industrial Silos/Tanks

LF