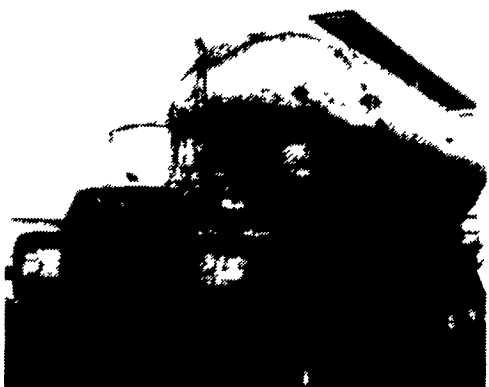




Sprout Waldron bulk trailer, self-contained power supply w/blower.



'74 Mack DM685, 237 Maxidline 5 speed w/5 compartment feed tank.

903 Cummins engine parts, also Jake brake.

Mack 450 rears - Rayco 411 rear cut off Lebanon
Ask For Wayne
(717) 272-9595

1973 Ford Louisville w/1984 22' Danco Roll Back Bed, Bad Engine \$6,000

1963 IH Loadstar, 1600 Tractor w/1979 Diamond S 26' Gooseneck Trailer \$3,500

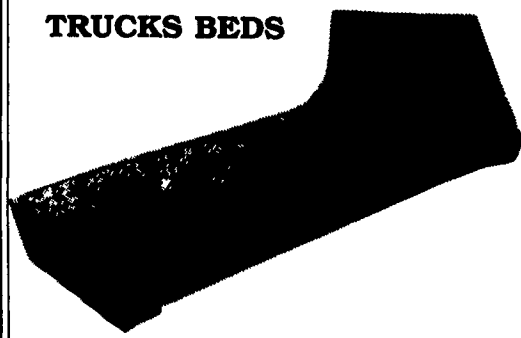
717-866-7066

35 TRUCKS & TRAILERS

1966 F1000 single axle re-built 534 CI new clutch, new brakes, \$4,000 32' single axle Freuhauf flatbed, \$2,200 Please call (717)823-1295

COME SEE OUR NEW DESIGN

TRUCKS BEDS

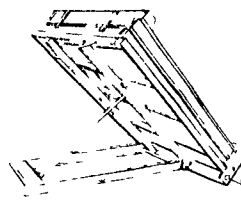


TRUCK BEDS

- 6'10"x60" or 72"\$550
- 8 1/2' x80" or 90"\$595
- 10'x90"\$725
- 11'x90"\$850
- 12'x90"\$900
- 14'x90"\$1050

RINGO HILL FARMS EQUIPMENT CO., INC.
Rt. 212, Pleasant Valley RD
Quakertown, Pa. 18951
215-346-7340

Replacement Dump Body Package For 3/4 Ton And 1 Ton Pickups



Complete With Hoist, Body, Pump, All Needed Hardware, Ready To Paint And Install

\$1,995⁰⁰

Call For More Information!

Hostetler Truck Bodies & Trailers
Rt. 322
Millroy, PA 17063
1-800-441-5161



FOR SALE

74 International Truck Tandem Axle, 318 Detroit, 13 Speed Transmission, Roll Back, 26 Ft. JerrDan Winch.
\$12,500 Or Best Offer
Call **Frank Weaver**
215-445-6724

YES!!

ENGLE FORD DOES MAKE IT EASIER!!

Over 100 New & Used Trucks, Vans & 4x4's

- 1989 Chevy 4x4 Sport Truck, AC
- 1988 Chevy 4x4 Super Cab, Automatic, AC
- 2- 1989 Ford Customized Vans, Automatic, AC
- 1988 Ford F350 Dually V8, Automatic, AC
- 1988 Ford Aerostar Eddie Bauer Edition, Auto, AC and more
- 1986 Chevy Beauville Window Van, 5 passenger, 6 cyl., automatic, 16,000 mi
- 1988 Ford 1/2 ton cargo van, 6 cyl., auto

ENGLE FORD, INC.

Rt. 147 North
Millersburg, PA 17061
In PA The Call's On Us 1-800-242-8075
Out of State Call 1-717-692-4841

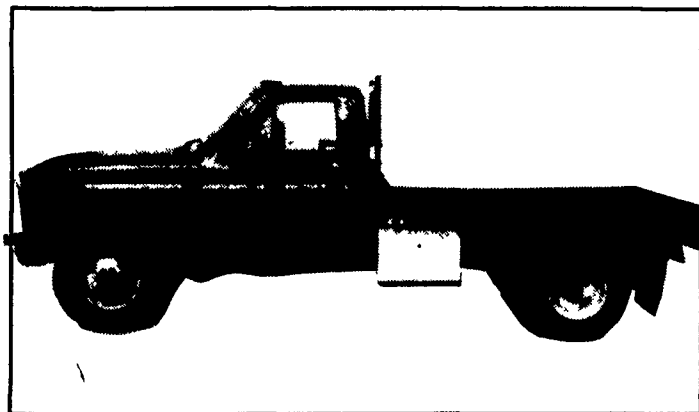
BADGER Truck Bodies from



Omaha Standard has engineered and built the toughest all-purpose body on the market. The "Badger" is rugged enough to withstand heavy day-in and day-out use. These attractive, light-weight bodies offer you the best value available today for your 1/2, 3/4 or 1-ton chassis. Optional gooseneck style hinged access door with drawbar.

"BADGER" Features and Specifications

- 12 gauge (nom. 1/8" thk.) treadplate steel deck with integral formed side rails.
- 3-1/2" channel cross members.
- 4" structural channel long members.
- ICC approved armored clearance lights and reflectors.
- Stake pockets on 24" centers.
- Heavy-duty 3/8" x 2-1/2" rub rails.
- 12 gauge (nom. 1/8" thk.) treadplate steel reinforced rear apron with three-light cluster.
- Heavy-duty square tube contoured bulkhead with 12 gauge (nom. 1/8" thk.) lower panel and heavy expanded metal upper panel.
- Bulkhead is welded and gusseted to platform and designed to accept 12" sideboards.

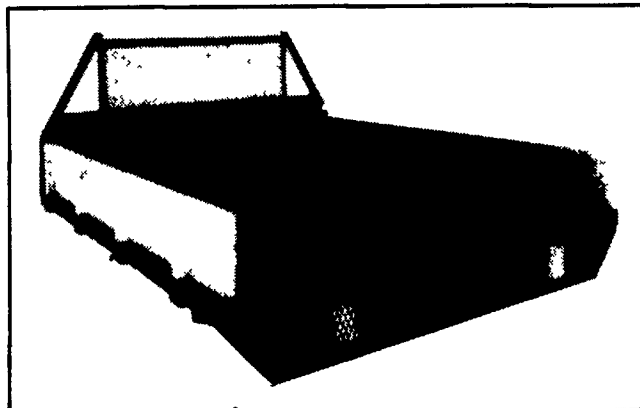


- Painted black.
- Optional equipment: gooseneck style hinged access door with drawbar.

Specifications

MODEL	LENGTH	WIDTH	C.A.	APPROX. WEIGHT
B8N	8'	82"	54"-60"	556 lbs
B8W	8'	91"	60"	604 lbs
B9	9'	91"	60"	708 lbs
B11	11'	91"	84"	841 lbs
B12	12'	91"	84"	957 lbs

**All Sizes In Stock
Prices Starting at \$949⁰⁰
Installation Available**



717-354-2150

FARMERSVILLE EQUIPMENT
R.D.4, East Farmersville Road, Ephrata, PA 17522

717-354-2150

SPECIAL END OF YEAR CLEARANCE ON OUR SPECIALLY EQUIPPED SHOW TRAILER



FEATHER-LITE ALL ALUMINUM GOOSENECK HORSE TRAILER



4 Horse, 5' Dressing Room, Sep. Tack Room, Saddle Racks, Bridle Hooks, Rear Ramp, All Padding and Matting, Stainless Steel Front, Special Striping, Beautiful Trailer
List \$24,800.00
Regular Advertised Price \$22,300.00

End of Model Year Price \$20,995.00
Call for more details



Hostetler Truck Bodies & Trailers
Rt. 322 Millroy, PA 17063
1-800-441-5161