

Corn Test Plots Harvested

SMOKETOWN (Lancaster Co.) — A series of 210 test plots representing hybrid corn varieties with potential for production in southeast Pennsylvania were harvested on site Monday.

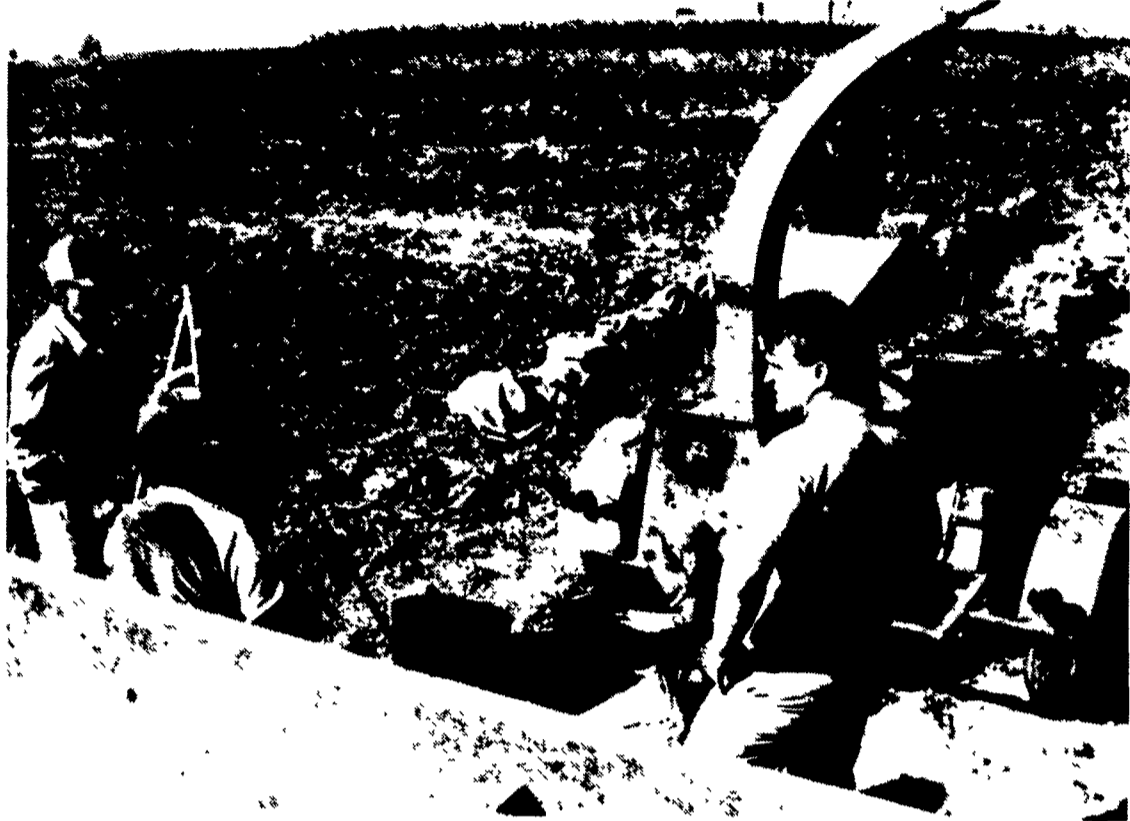
The test plots are part of the ongoing effort by P. L. Rohrer and AgriPro to develop varieties that will produce well east of the corn

and compare varieties from other competitive sources.

Dr. Frank Loeffel, senior corn breeder, Brookston, Indiana, said that since Pennsylvania has different growing conditions than out west, AgriPro brings varieties into the state test plots that show potential for use here.

"We can use a fuller season variety here than what we can usually grow in the central corn belt," Loeffel said. "But you have more disease pressure here such as gray leaf spot, anthracnose (stalk rot), and rust."

The Rohrer/AgriPro test plots have been grown each year since 1979.



Samples of corn from test plots are shelled and weighed to check yields.



Earl Rohrer, left, and Frank Loeffel harvest test plots for AgriPro.

"I'm telling you, mister - this was a dead herd! But six months on the Fertrell feeding program and we have better health, higher production and fewer vet bills. I wish we'd been on Fertrell ten years ago!"

Box 265
Bainbridge, PA 17502
(717) 367-1566
(800) 347-1566

Contact the representative nearest you.

Harry Barner
Box 265, Lamar, PA 16848
(717) 726-3275

Zimmerman Lime & Fertilizer
325 W Burkholder Rd., Litz, PA 17543
(717) 733-7674

Randy Bottelcher
RD #2, Box 8, Belleville, PA 17004
(717) 935-5406

Christ B. Miller
Box 164, Bird-in-Hand, PA 17505

Tri Our Organic
RD #2, Box 113, McAllisterville, PA 17049
(717) 463-2551

Ed Ott
2039 Dark Shade Dr. Windbar, PA 15963
(814) 467-5909

Cochran Co-op
Box 245, Pine St., Cochran, PA 16314
(814) 425-7401

Fred Clark
PO Box 43, McEwensville, PA 17949
(717) 323-0962

Bob Ellis
RD #3 Box 470, Lewisburg, PA 17837
(717) 568-0530

Elwood Winter
RD #4, Box 86, Muncy, PA 17756
(717) 546-6361

Max Reapsome
RD #1, Loysville, PA 17047
(717) 789-3223

George Bechtel
RD #3, Emberton, PA 16373
(412) 867-2468

Farm Basics
2409 Marsh Pike, Hagerstown, MD 21740
(301) 733-0796

William Barr
PO Box 309, Saegertown, PA 16433
(814) 333-8118

MORIDGE GRAIN DRYERS

Saves Crops Saves Fuel.

Moridge grain dryers operate at up to half the per bushel cost of some dryers. Since the 1960's fuel conscience European farmers have preferred the Moridge dryer economy. On American farms and

at country elevators Moridge has handled the drying because of its reliability and low investment-low labor costs. Now there's an even bigger reason to dry with Moridge—fuel economy.

Dries Grain Evenly
Improves Grain Quality
Dries High Moisture Grain Efficiently
Completely Portable, Not Just Movable

Dries All Types of Grain
Grain Sorghum
Soybeans
Corn • Rice
Wheat • Barley
Sunflowers
Flax • Rape



MORIDGE
MANUFACTURING, INC.
Moundridge, Kansas 67107



For The Name Of Your Nearest Dealer, Contact
HAMILTON EQUIPMENT, INC.
567 S. Reading Road Ephrata, PA 17512
(717) 733-7951