

# Members, Quality Producers

Robert and Norman Grove, Greencastle; Abner and Fannie King, Paradise; Henry and Vernie Kin-

singer, Myersdale; and Levi and Rachel Lapp, Quarryville. Also, Harold and Joyce Rauben-

stine, Hanover; Phillip and Pamela Risser, Greencastle; Helen and Carl Seiler, Westminster; Arlie and Charles Smith, Thurmont; Norman and Mary Stauffer, Love-

ville; Stephen Trout, Forrest Hill; W. Kenneth and Darlene Vansant, Jr., White Hall; Carl and Grace Weant, Taneytown; Wenger Ridge

Farms, Samuel E. Jr. and Nelson Wenger, Shippensburg; Amos and Nancy Yoder, Garrett; and David and Sarah Zook, Lititz.



Middle Atlantic young dairymen winners Mike and Debble Herring will represent the division at Dairymen Inc.'s corporate contest during the December 13-14 annual meeting in Nashville, Tennessee.



Dairymen silver quality award winners include, from left, Robert and Norma Grove, Sam and Helen Wenger, Joyce and Harold Raubenstein, Grace Weant and Helen Seller.

## 39 Earn ADC's Quality Premium Award

SOUTHAMPTON (Bucks Co.)— Thirty-nine members of Atlantic Dairy Cooperative have earned the cooperative's 1990 Quality Premium Award, which recognizes superior quality milk production.

The award is presented to members who qualify for either the 10-cent or 20-cent per hundred-weight quality milk bonus all 12 months of the fiscal year. A plaque will be awarded to each winner at local and district meetings either this fall or next spring.

Begun in 1987, Atlantic's two-tier quality premium program provides a financial incentive to members to produce milk of the highest quality. Members must meet a series of seven quality standards to obtain the bonus.

During the 1989-1990 fiscal year, \$2.2 million was paid out in quality bonuses on more than 1.6 billion pounds of milk. On the average, 46.5 percent of members earned the extra payments. Of this 31.4 percent received the 10-cent premium, and 15.1 percent received the 20-cent premium.

"A great deal of credit and congratulations goes to our members for their hard work in producing a good, wholesome, quality product," said Don M. Breiner, quality and field services manager.

According to Breiner, the percentage of members receiving the quality bonus has grown from 38.6 percent in 1987 to this year's average of 46.5 percent.

"It takes a commitment to do the job right and to pay attention to detail," Breiner said of earning the premium. "We are proud of these members."

Following is a list of this year's recipients:

**District 1:** Harold Halteman, Telford; and David W. Wurster, Ottsville.

**District 2:** Myerlyn Farm, Elmer, N.J.; and Charles E. Rogers, Ringoes, N.J.

**District 3:** J. Richard Breneman, Quarryville.

**District 4:** Level Square Associates, Henderson, Md.; W. Franklin and Barbara L. Moore, Centerville, Md.; W. Levis Phipps Jr., Wilmington, Del.; and Howard A. and Katharine C. Webb, Lincoln, Del.

**District 5:** Glenn E. Burkholder, Washington Boro; and John J. Landis, Leola.

**District 7:** Jacob M. Conley, Mt. Joy; Paul M. Fahnstock, Manheim; Robert E. Kulp, Manheim; Eugene W. Martin, Lebanon; Mark C. and Alta G. Patches, Lebanon; Benuel L. Petersheim, East Petersburg; and Rhelda E.

and Lynn H. Royer, Lancaster.

**District 8:** Lowell C. and Laura A. Kurtz, Oley; and Welsh Hill Dairy Farms, Morgantown.

**District 9:** Darwin S. Derstine, Kempton; Rothrock Farms Golden Holstein, Kempton; Robert L. Seidel, Lenhartsville; and Nelson Sensenig, Newmanstown.

**District 11:** Leon D. and Sarah Jane Kurtz, Cochranville.

**District 14:** Ja-Lene Farm, Spring Mills.

**District 15:** Jack and Roger Beck, Mercersburg; Harold J. and P.J. Goshom, Dry Run; Richard E. and Helen Hoffeditz, Mercersburg; Harlan R. and Lois E. Martin, Greencastle; and Weaver Farms, Chambersburg.

**District 16:** Lester E. and Wayne L. Deardorff, East Berlin; Leroy Deputy, East Berlin; Wayne H. and Gladys M. Rodgers, Gettysburg; Glenn L. and Marie J. Wentz, Dillsburg; and Witmer Creek Farms, Carlisle.

**District 20:** Harold W. Guyer, Martinsburg; and Thomas W. and Margaret Kelly, Tyrone.

**District 23:** Alton and Paula Olver, Honesdale.



**GIGANTIC SELECTION**  
IN  
**Lancaster Farming's CLASSIFIEDS**

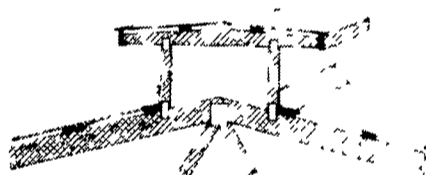
Telephone: (717)866-6581



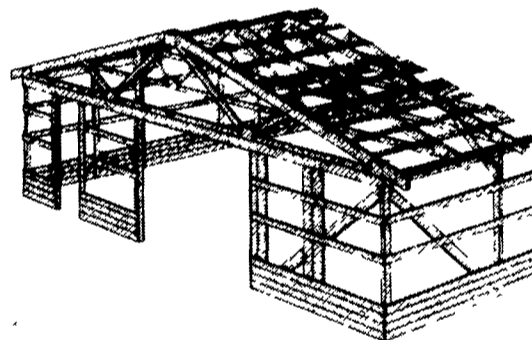
MANUFACTURERS of  
LAMINATED RAFTERS  
and WOOD ROOF TRUSSES

701 E. Linden St., RICHLAND, PA 17087

Fax: (717) 866-7237



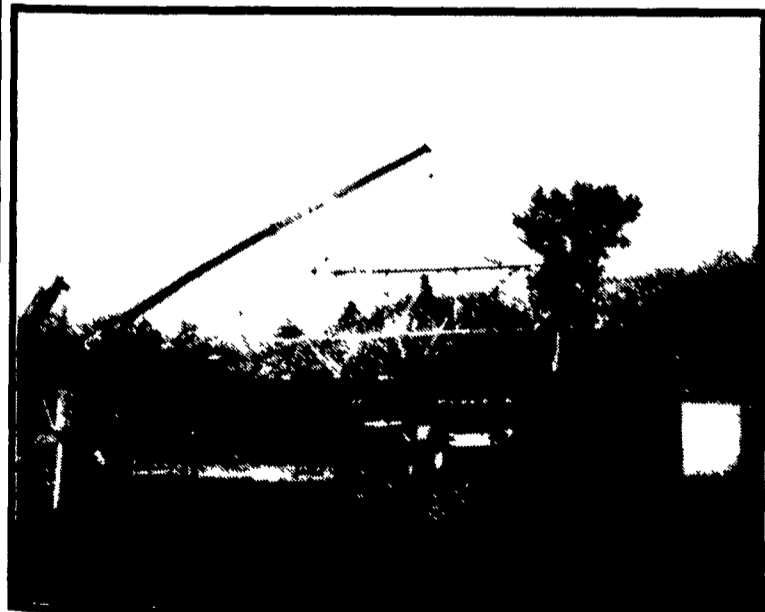
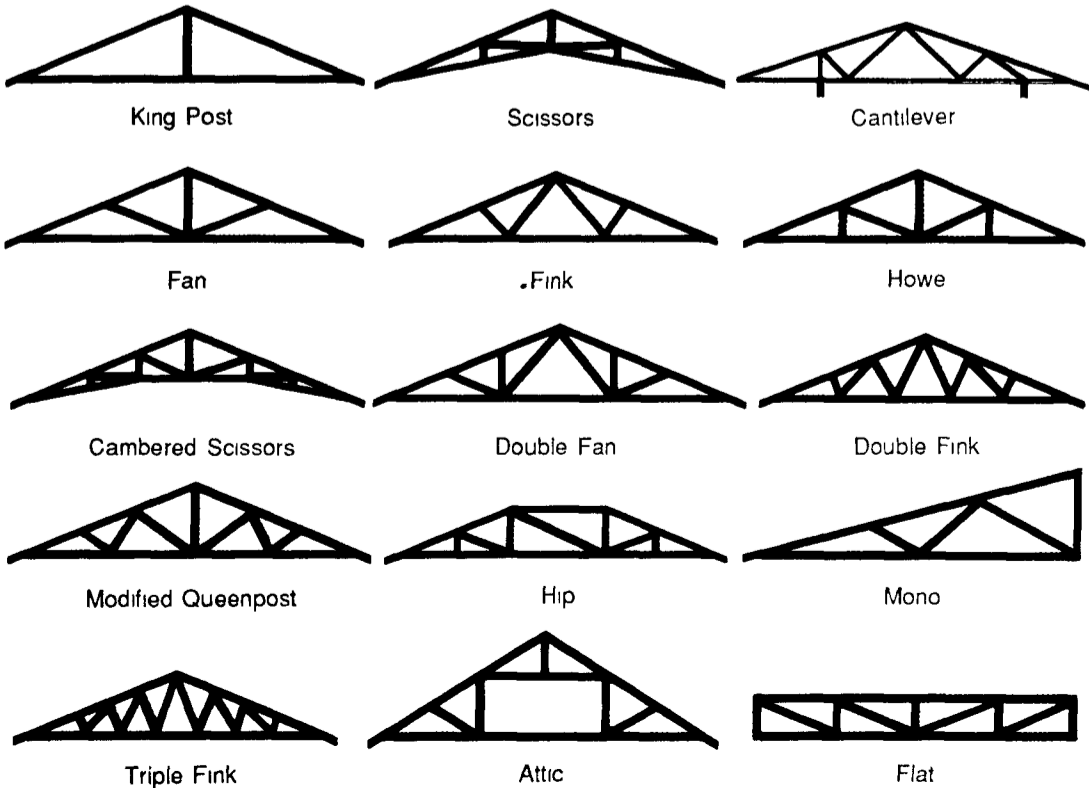
New Ridge Ventilator for increase air flow



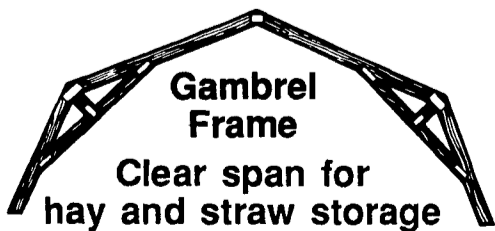
This dimension adjustable

Ridge Alternate ventilator with one-piece vent cap

### COMMON TRUSS CONFIGURATIONS



Commercial Building Featuring 80' Clear Span Trusses



Gambrel Frame

Clear span for hay and straw storage

We also manufacture heavy timber trusses with epoxy coated bolt through connections.