

# Keystone Announces Scholarships

**SHOEMAKERSVILLE** (Berks Co.)—Keystone Farm Credit, ACA announces the availability of two \$500 scholarships toward the higher education of students planning to pursue careers in agriculture.

Keystone, serving the financial needs of agriculture and rural residents in the 15-county southeastern Pennsylvania area, will award one scholarship in each of its two regions.

Region I is comprised of Chester, Delaware, Lancaster, Lebanon, and Lower Dauphin counties. Upper Dauphin, Berks, Bucks, Carbon, Lehigh, Monroe, Montgomery, Northampton, Philadelphia, Pike and Schuylkill are in Region II.

An applicant's parent(s) or guardian(s) must reside in one of the above counties. Applicants must be high school seniors planning to attend a four-year college on a full-time basis with agricul-

ture or agribusiness as the major emphasis of study.

Notification of the availability of the scholarships is being sent to the administrators of the secondary schools in the 15-county area. Keystone Farm Credit, ACA also intends to reach as many of the private schools in the area as possible; scholarships are not limited to the public school systems.

Anyone whose educational institution was not contacted should not consider himself or herself excluded from requesting an application form. Contact Keystone Farm Credit, ACA, Attention Carol M. Mercner, P.O. Box 687, Avondale, PA 19311, (215) 268-3865.

## Low-Interest Tech Loans Available

**HARRISBURG** (Dauphin Co.)—Pennsylvania farmers who want to employ new technology on the farm can fund projects through low-interest loans from the Department of Agriculture, Agriculture Secretary Boyd E. Wolff said recently.

The Agricultural Technology Loan Program (ATLP) will accept applications from Oct. 15 until Dec. 31.

"Pennsylvania farms are small businesses that generate jobs and economic activity," Wolff said.

"These loans are economic development tools for rural areas."

Matching loans of up to \$50,000 are available at an interest rate one-half of the federal discount rate. Last year's loan rate was 3.5 percent.

Farmers demonstrating the greatest need and proposing the most innovative use of technology will be awarded the low-cost loans for projects that will increase productivity or provide entry into new product areas, Wolff said.

### Morrisons Cove

**Livestock**  
Martinsburg, Pa.  
Oct. 15, 1990

Report supplied by auction

**CATTLE** 271. STEERS: H. CHOICE & PRIME 73.50-75.10, CHOICE 72.75-73.50, GOOD 70.50-72.75, STANDARD 66.50-70.25.

**HEIFERS:** CHOICE 69.25-72.10; GOOD 66.50-69.50.

**COWS:** UTILITY & COMMERCIAL 51.00-56.00; CUTTERS 51.00-55.00, CANNER & LOW CUTTER 40.00-49.75. **BULLOCKS:** GOOD & CHOICE 63.75-70.10.

**BULLS:** YIELD GRADE NO. 1 61.00-66.50.

**FEEDER CATTLE:** STEERS 72.00-95.00, BULLS 65.00-79.75; HEIFERS 65.00-75.00.

**CALVES** 259. PRIME 95.00-150.00; CHOICE 90.00-95.00, GOOD 85.00-90.00, STANDARD & GOOD 80.00-85.00, 90-110 LBS. 65.00-70.00, 65-90 LBS. 60.00-69.00, HOLSTEIN BULLS 90-130 LBS. 135.00-170.00; HOLSTEIN HEIFERS 90-130 LBS. 135.00-160.00.

**HOGS** 65. US NO. 1-2 58.50-59.75, US NO. 1-3 55.00-55.75.

**SOWS:** US NO. 1-3 51.00-53.00. **BOARS** 43.00-46.25.

**FEEDER PIGS** 39. US NO. 1-3 20-35 LBS. 25.00-27.00 PER HEAD, NO. 1-3 35-50 LBS. 28.00-35.00 PER HEAD.

**SHEEP** 92. CHOICE 50.00-65.00; GOOD 45.00-55.00; SLAUGHTER EWES 17.00-23.50.

**GOATS:** 20.00-55.00 PER HEAD. 17 LOADS HAY. ALFALFA: 90.00-130.00. TIMOTHY: 46.00-74.00.

### Dewart Livestock Auction

Dewart, Pa.  
Monday, October 15, 1990  
Report Supplied by PDA

**CATTLE** 128...PDA...Compared with last weeks market: Few Choice Holstein steers 68.75-72.00, couple Select 63.50&67.25. Breaking Utility & Commercial slaughter cows 51.00-55.25, couple 57.00, Cutter & Boning Utility 50.00-54.75, few to 58.75, Canner & Low Cutter 45.00-48.00, Shells down to 40.00. Few Yield Grade No. 2, 1080/1350 lbs. sl. bulls 55.00-60.50. Feeder Cattle: Few Medium Frame No. 1, 300/450 lbs. steers 85.50-92.50, few 760/920 lbs. 69.50-75.00. Large No. 2, 680/800 lbs. 61.25-66.50.

**CALVES** 232...Couple Good vealers 80.00&90.00, Utility and low Standard

60/85 lbs. 60.00-70.00, few down to 50.00. Farm Calves: Holstein Bulls No. 1, 90/130 lbs. 130.00-167.50, No. 2, 80/120 lbs. 78.00-125.00; few Hol. Heifers 70/120 lbs. 82.50-175.00.

**HOGS** 59...US 1-3 210/290 lbs. barrows and gilts 57.50-58.00. Few US No. 1-3 400/780 lbs. sows 47.75-50.00.

**FEEDER PIGS** 96...Few Lots US No. 1-3 20/35 lbs. feeder pigs 21.00-29.50, few lots 40/50 lbs. 30.00-36.50 --- all per head.

**SHEEP** 2...Couple Choice 95 lbs. wool slaughter lambs 48.00&50.00 - all cwt. **GOATS** 0... - per head.

### Green Dragon Hay

Ephrata, Pa.  
Friday, Oct. 12, 1990  
Report Supplied by Auction

**TOTAL LOADS:** 89. **MIXED HAY:** 60.00-137.00. **ALFALFA:** 68.00-109.00. **TIMOTHY:** 83.00-120.00. **CLOVER:** 50.00-100.00. **STUBBLE HAY:** 61.00-63.00. **CORN STALKS:** 52.00. **STRAW:** 84.00-112.00. **EAR CORN:** 58.00-110.00. **OATS:** 1.00-1.90 BU. **RYE:** 4.30-5.00 BU.

### Buffalo Produce

Mifflinburg R3  
Oct. 16 and Oct. 18, 1990  
Report Supplied by Auction

**APPLES:** YELLOW DELICIOUS, MACINTOSH 5.00-9.00 BU. **CABBAGE:** 3.25-4.50 50 LBS. **CAULIFLOWER:** .15-.70. **BROCCOLI:** 6.50-11.00 (18 COUNT). **GOURDS:** 2.00-9.50 1/4 BU. **SQUASH:** BUTTERNUT 3.25-4.50 BU; ACORN 3.25-4.25 BU. **PUMPKINS:** NECK .95 EACH; FACE .25-1.35 EACH. **PEPPERS:** 4.00-10.50 FOR LARGE; 3.00-7.00 FOR MEDIUMS; RED 5.00-9.00; YELLOW 8.50, ALL 1 1/9 BU. **TOMATOES** 4.00-14.00 25 LB. 1/4 BU. **INDIAN CORN:** .10-.70 BUNCH; **LONG INDIAN CORN** .20-.90 BUNCH. **AUCTION DATES NEXT WEEK ARE TUESDAY AND THURSDAY. WATCH FOR CHRISTMAS TREE AND CRAFT AUCTION TUES. NOV. 20, AND TUES. DEC. 4.**

## Farm Drainage & Soil Conservation... That's Us!

We Are Fully Equipped To Install Tile With Laser Beam Control

We Specialize In Soil Conservation And Land Improvement Work



- Improved Land Use and Efficiency
- Better Soil Conservation
- Deeper Root Development
- Increased Crop Yield
- Longer Growing Seasons
- Improved Plant Quality
- Better Livestock Farming

We're Equipped With:  
Dozers, Pans And Excavators  
To Handle Any Excavating Jobs,  
Such As Terraces, Waterways,  
Diversion, Ponds, Etc.



**COCALICO EQUIP. CO.**  
FARM DRAINAGE & EXCAVATING

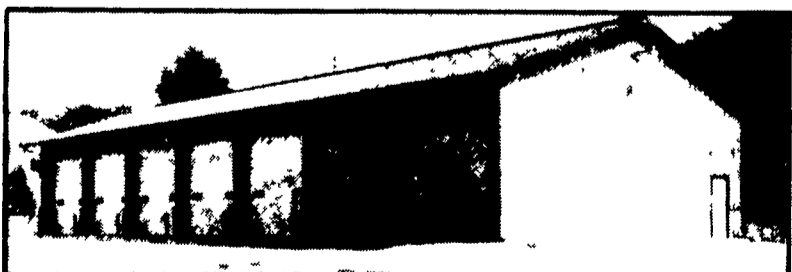
RD#4, BOX 317, DENVER, PA. 17517 PH: 215-267-3808  
717-738-3794



## MORTON BUILDINGS

Since 1903

- Horse Barns
- Riding Arenas
- Garages
- Warehouses
- Offices
- Shops
- Equipment Storage
- Aircraft Hangars



**MORTON BUILDINGS, INC.**  
Excellence — Since 1903

CONTACT:

3368 York Rd.  
Gettysburg,  
PA 17325  
717/624-3331

P.O. Box 126,  
Phillipsburg,  
NJ 08865  
201/454-7900

Call or write today for more information

1-800-447-7436

Illinois only, call 1-800-428-0888



**BINKLEY & HURST BROS. INC.**

133 Rothsville Station Rd. • Lititz, PA 17543  
Phone 717-626-4705

**Store Hours**  
Mon.-Fri. 7 AM - 5 PM  
Sat. - 7 AM - 11:30 AM  
Sun. Closed - Lord's Day

**WE SHIP PARTS DAILY**

FEDERAL EXPRESS

TRUCK FRT.

AIR FRT

B&H DELIVERY SERVICE

HIGH PRESSURE WASHERS:



David Brown



TRAILERS

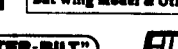
SUNFLOWER



**LIGHTWEIGHT PORTABLE CASE III GRAIN MOISTURE TESTER** - Provides Direct Readout For Corn, Wheat, Soybeans  
List \$189.95 **SALE \$165.00**  
White Supply Lasts

**KINZE**  
CORN PLANTERS & GRAIN CARTS

**BUSH HOG**  
ROTARY CUTTERS  
Bat Wing Model & Others



**WOODS**  
MOWERS & BLADES

**ATHENS**  
DISK HARROW, COULTER, CYBELS, CHISEL PLOW



Busy As A Bee?

No Matter Where You Are - You're Never Too Far!

Your Parts Are Just A Phone Call Away!