

# PFU Says Floor Needed On Milk Prices

HARRISBURG (Dauphin Co.) — After carefully analyzing the declining milk prices being paid to area dairy farmers, the Pennsylvania Farmers Union (PFU) is urging the United States Department of Agriculture (USDA) to place a floor under manufacturing milk prices across the United States.

At the National Milk Hearing held in Syracuse, New York on October 5, 1990, PFU urged the USDA to place a \$14.00 per cwt floor under the manufactured milk price in all federal milk marketing orders.

PFU had originally submitted four different proposals for consideration at the hearing. The proposals dealt mainly with restructuring the pricing mechanism on Class I and Class II milk.

After observing that prices being paid to dairy were falling way short of expectations, and with the recent news of the declining price level of the M and W price series, PFU believes that immediate action must be taken to prevent further chaotic conditions on dairy farms.

With the announcement on October 5 of the severe drop in the M and W price of 59¢ per cwt, the September M & W is \$12.60 per cwt. Also on October 5 the cheese prices dropped 8¢ a pound, which certainly means severe declines in the M & W series price will be forth coming in October and November.

Estimates now are that the manufactured milk prices could go

under \$12.00 per cwt for the rest of 1990. PFU believes this kind of news clearly illustrates the need for immediate action to "shore-up" milk prices to area dairy farmers. To continue to price milk at the Farm Level in this manner is suicidal at best, according to PFU.

### PFU Proposal

1. Establish a \$14.00 per cwt price on manufactured milk which would become the basic formula price for all milk regulated by our federal milk marketing orders. (Replace the M & W Series)
2. Adjust the \$14.00 price twice a year in relationship with the rate of inflation. We recommend - January 1 and July 1.
3. Immediately increase the transportation differentials in all markets to cover the cost of transportation. Adjust the differentials twice a year.
4. As soon as possible develop a milk pricing formula that reflects the actual average cost of production at the farm level.
5. Urge the USDA to implement the supply-management provisions of the new Farm Bill when it becomes law.

Everyone realizes by now that predicting milk prices is very difficult, according to PFU. They believe the unorthodox prices are unrealistic for dairy farmers, milk handlers and consumers.

Blend prices paid to dairy farmers for September, October, and November will fall short of expectations. December blend price could go below \$12.50 per cwt or nearly \$3.00 per cwt. Under 1989's December price using USDA's cost of production figures for the Northeast during 1988, and applying a 4 percent inflation factor for 1989 and a 6 percent factor for 1990, PFU finds the following:

1. Establish a \$14.00 per cwt price on manufactured milk which would become the basic formula price for all milk regulated by our federal milk marketing orders. (Replace the M & W Series)

### North East Cost of Production

1988	—	\$12.92
1989	—	\$13.44
1990	—	\$14.24

### Federal Order #2 Average Blend Price

1988	—	\$11.87	\$1.05
1989	—	\$13.10	\$ .34
1990	—	\$13.75	\$ .49

These cost of production figures do not allow anything for management and/or profit. As dairy farmers enter 1991, the cost of production factor versus the actual paid blend price will widen even further and by May of 1991 actual blend prices could be down to the 1979 level.

Immediate action must be taken to prevent any further erosion of milk prices said PFU. They believe premiums in many areas are declining dramatically, when in fact these premiums should be escalating to help compensate dairy farmers for the drop in actual market order prices.

For comments, contact PFT at (800) 932-4629 or (717) 234-4311.

# Stanford Forms HYTEST Seeds

BUFFALO, N.Y.— Stanford Holdings, Ltd, formerly The Stanford Seed Co., Buffalo, NY, proudly announces the formation of HYTEST SEEDS, INC.

Joe Butwin, newly appointed President of HYTEST SEEDS, INC., said that although the company is new, the name HYTEST has been a brand name sold by Stanford Seed for the past 10 years. HYTEST products include

NCGA-winning corn hybrids and naturally recognized alfalfa varieties such as Allstar, Victory, and Eclipse.

Previously the farm seed division of Stanford Seed, HYTEST personnel and ownership remain the same. Butwin said, "It's the same company the farmer has known since 1912, selling products specifically bred for the eastern United States."

# Manheim Dairy Goat

(Continued from Page D7)

### HAMPSHIRE

Ram Ewe Lamb: 1. Wendall Landis. 2. Regina Landis. 3. Peter Hoffines. Yearling Ewe. 1. Amy Hoffines. 2. Peter Hoffines. Ewe Lamb 1. Wendall Landis. 2. Regina Landis 3. Wendall Landis Pair Ewe Lambs 1. Wendall Landis. 2. Regina Landis 3. Peter Hoffines Flock: Peter Hoffines.

CHAMPION: Wendall Landis, RESERVE Amy Hoffines

### POLYPAY

Ram Ewe Lamb 1. Tim Stoner Yearling Ewe 1. Tim Stoner. Ewe Lamb: 1. Tim Stoner. 2. Tim Stoner.

CHAMPION: Tim Stoner, RESERVE Amy Hoffines

### SHROPSHIRE

Ram Ewe Lamb 1. Michelle Kerdeman 2. Mike Kerdeman Yearling Ewe: 1. Arissa Snaveley. 2. Michelle Kerdeman. Ewe Lamb 1. Arissa Snaveley. 2. Michelle Kerdeman 3. Jessica Hill Pair Ewe Lambs: 1. Michelle Kerdeman 2. Mike Kerdeman Flock: 1. Michelle Kerdeman

CHAMPION: Arissa Snaveley, RESERVE Arissa Snaveley

### SUFFOLK

Ram Ewe Lamb: 1. Jeff Martin. Yearling Ewe: 1. Jeff Martin. 2. Jason Stoltzfus. 3. Jerry Bollinger. Ewe Lamb: 1. Kerra Allen. 2. Jerry Bollinger. 3. Jeff Martin Pair Ewe Lambs: 1. Jeff Martin. 2. Kerra Allen. 3. Travis Donough Flock: Jeff Martin.

CHAMPION: Jeff Martin; RESERVE: Kerra Allen

### SUPREME CHAMPION

Wendall Landis

### MARKET LAMBS

Lightweight Class 1: 1. Diane Musser 2. Angie Erb. 3. Enc Fntz. Class 2: 1. Travis Donough 2. Kendall Reiff. 3. Jessica Stoltzfus Class 3: 1. Tracy Bollinger. 2. Lydon Reiff. 3. Enc Fntz. Class 4: 1. Jessica Stoltzfus. 2. Raphael Peters. 3. Joelle Boll. Class

5: 1. Carrie Groff 2. Carne Groff 3. Amy Bollinger.

CHAMPION LIGHTWEIGHT: Carrie Groff, RESERVE CHAMPION LIGHTWEIGHT: Lydon Reiff; MEDIUM WEIGHT: 1. Lydon Reiff 2. Jeff Martin. 3. Jason Stoltzfus

CHAMPION MEDIUM WEIGHT: Lydon Reiff; RESERVE MEDIUM WEIGHT, Jeff Martin; HEAVYWEIGHT: Class 7: 1. Lisa Reiff. 2. Aaron Groff. 3. Wendall Landis Class 8 1. Regina Landis 2. Travis Donough 3. Raphael Peters Pen-Of-Three: Lightweight 1. Carrie Groff 2. Jason Stoltzfus. 3. Jessica Stoltzfus Heavyweight: 1. Andrea Mylin. 2. Raphael Peters 3. Amy Bollinger.

CHAMPION HEAVYWEIGHT: Regina Landis, RESERVE HEAVYWEIGHT: Lisa Reiff.

### SALE LAMBS

Lightweight. Class 1 Ryan Tracy 2. Jenny Stauffer 3. Connda Erb. Class 2 1. Mark Tracy 2. Joelle Boll 3. Diane Musser Class 3 1. Aaron Groff 2. Melissa Becker 3. Keith Bollinger Class 4. 1. Carne Groff 2. Rodney Boll 3. Brian Hoffer. Class 5 1. Lisa Reiff 2. Jason Stoltzfus 3. Brian Hoffer. Class 6 1. Michael Fyock. 2. Jamery Longnecker 3. Jessica Stoltzfus

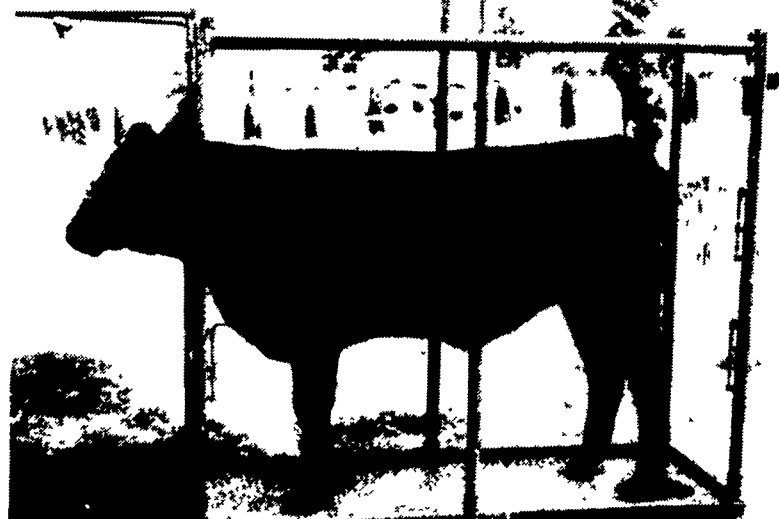
CHAMPION LIGHTWEIGHT: Lisa Reiff, RESERVE LIGHTWEIGHT: Michael Fyock, Heavyweight: Class 7: 1. Tracy Bollinger 2. Lydon Reiff. 3. Jeff Martin. Class 8 1. Jill Hoffines. 2. Karen Becker 3. Andrea Mylin Class 9: 1. Regina Landis. 2. Angie Longnecker. 3. Amy Hoffines. Class 10 1. Raphael Peters. 2. Travis Donough. 3. Wendall Landis.

CHAMPION HEAVYWEIGHT: Tracy Bollinger; RESERVE HEAVYWEIGHT: Regina Landis; CHAMPION SALE: Tracy Bollinger, RESERVE CHAMPION SALE: Regina Landis; GRAND CHAMPION MARKET LAMB: Regina Landis

# MILK. IT DOES A BODY GOOD.™



## BLOCKING CHUTE



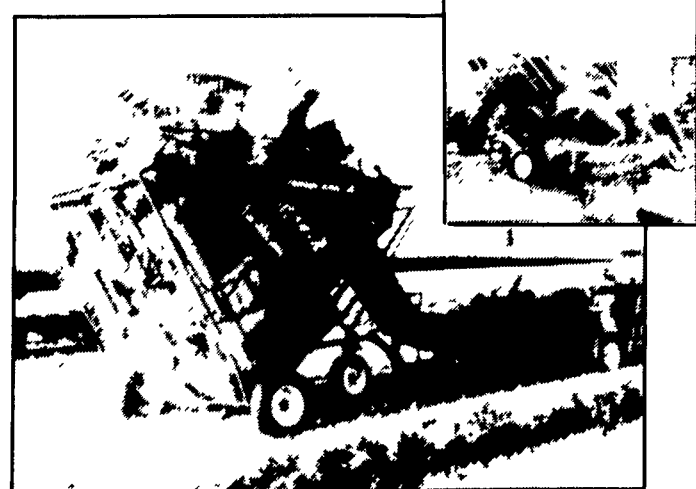
- For safe and easy grooming, washing and clipping cattle
- Expanded metal floor stays cleaner and gives more traction
- Assembles and disassembles quick and easy
- Can easily be moved and loaded by one person

# PAUL B. ZIMMERMAN, INC.

Call or Write For Additional Information And Your Nearest Dealer  
 295 Woodcorner Rd. Lititz, PA 17543  
 1 Mile West of Ephrata Phone: 717-738-1121



THE PRACTICAL WAY TO HANDLE SQUARE BALES FROM THE FIELD TO THE BARN.



### ADVANTAGES OF "HAYBASKET"

- Reduces baling time by up to one-half since you can unload at the barn with the flip of a lever.
- Reduce the number of broken bales caused by a bale thrower.
- Eliminate maintenance cost of a kick/thrower.
- If you presently are not using a kicker or need a new baler, eliminate the entire cost of a kicker.
- Eliminate the aggravation and back breaking labor of unloading tangled, wedged bales from a slippery floor three feet off the ground.
- Replace three hay wagons with two haybaskets since unloading time is so fast.
- Eliminate the "Swaying" problem with 4 wheel wagons on the road. Increase transport speed
- The Haybasket acts like a "Two-Wheel" Trailer. Since the front wheel casters, it is easy to maneuver.
- The Haybasket is priced close enough to a new kicker wagon that it is very affordable.

### QUESTIONS MOST FREQUENTLY ASKED.

- HOW MANY BALES DOES IT HOLD?  
The Haybasket will hold from 95-100 full size bales.
- WHAT ABOUT CORNERS?  
Owners report that they can follow average raked corners with no problem. One owner said he can make a 90 degree turn.
- WHAT ABOUT HILLS?  
With a 10' Wheelbase and a very low center of gravity the haybasket is much more stable on hillsides than a wagon with a 72" treadwidth and high center of gravity.

\$2250.00 FOB per wagon

Haybasket  
 144 Fair.  
 Ephrata, Pa. 17526

717-354-0282  
 Dealer call for price discount