

WENGBERS FARM MACHINERY, INC.

ROUTE 501 - 1 MILE SOUTH OF MYERSTOWN, PA.

HOURS:
MON.-FRI. 7:30-5
SAT. 7:30-NOON

PHONE- 717-866-2135

1-800-451-5240

FAX- 717-866-4300

HARVEST SEASON SPECIAL PRICING, TILL OCT. 31, 1990



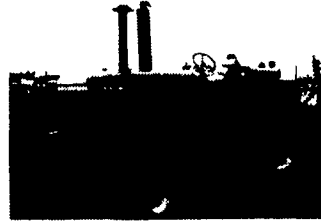
John Deere- 1982, 4440 Cab, Air, Powershift, 18.4x38 Dyna Torque Radials, Very Nice, 130 HP.



John Deere 1979, 4440 Cab, Air Quad, New 18.4x38 Radials, 3 Remotes Front & Rear Weights, 130 HP.



John Deere 1974 4430, Hinkler Cab Quad, 18.4x38 Dyna Torques Rear Wheel Weights, 125 HP.



John Deere 1974, 4430, Quad 18.4x38's, Front Weights, Dual Remotes, 125 HP.



Ford 1984, TW15 Cab, Air, 18.4x38 Dyna Torques, Power Adjust Rims Front & Rear Weights, 121 HP.



International 1977, 1486, 4WD, Cab, Air, 3648 Hrs., New 18.4x38", New 13.6x24", 540/1000 PTO, Dual Remotes, Good Condition, 145 HP.



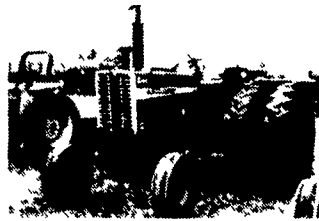
Ford 1984- 5610, 4WD, Cab, Air, 777F, QT Loader, 16.9x38's & 14.9x24's Rear Wheel Weights, 500 Hrs., 62 HP.



International 1976, 986, Cab, Air 18.4x34's 540/1000 PTO, Dual Remotes, Rear Wheel Weights, Good Condition, 105 HP.



Allis Chalmers 1970, 220 Cab, 3 Pt., PTO, 2 Remotes, 18.4x38's, Front Weights, 135 HP.



International 1256 With Duals 18.4x38's, Dual Remotes, 540/1000 PTO, 116 HP.

TOP QUALITY PREOWNED TRACTORS CALL AND ASK FOR DAVE OR DENNIS FOR DETAILS

"Working To Make Farming Affordable"

FARM TRACTORS

JOHN DEERE

- 1966- 2020 Gas With #48 Loader.....\$6900
- 1985- 850- 4WD w/#75 Loader, 3 Pt., PTO, 320 Hours.....\$10,500
- 4520 With Cab Coming In

INTERNATIONAL

- 1978- 84 Hydro, 16.9x28's.....\$8900
- 1980- 686 15.5x38's.....\$6900
- 1978- 184 Cub Lo-Boy With Loader And Woods L-59 Belly Mower.....\$5250
- 140 With 5' Woods Belly Mower, Good Condition.....\$4900
- 140 Hi Clear With Side Dressers, Good Condition.....\$4900
- 140 Fast Hitch, Very Nice Condition, 1X Plow & Snowblade & Cult., Available.....\$4900
- 185 Cub Lo Boy With 5' Belly Mower.....\$3900
- Cub Yellow & White With 1000 Loader.....\$3500
- 1980- 186 Hydro, Cab, Air..... Coming In

LONG

- New 2360, 4WD, 35 HP
- New 2460, 4 WD w/Loader 42 HP
- New 2510, 4WD, 48 HP
- New 2610, 4WD, 64 HP
- New 610 w/Loader, 64 HP
- New 610, 4WD w/Loader, 64 HP
- New 510, 4WD, 48 HP
- New (2) 460, 4WD, 42 HP
- New 360, 4WD w/Loader, 35 HP
- New (2) 360, 2WD, 35 HP
- New (4) 310, 4WD, 28 HP

OLIVER

- 1974- 1365 4WD, 16.9x30's, 9.5x24's, 707 Leon Loader.....\$7900
- 1950- GM Diesel, 18.4x34's, Rear Wheel Weights.....\$6500
- 1968- MM 900, 18.4x38's, 540/1000 PTO, 2 Remotes.....\$4900

OLIVER

- 1961- 1900 GM Diesel, 18.4x34's Rear Wheel Weights\$4500
- 1963- 1800 Gas, NF, 18.4x34's, Front Weights.....\$3900
- 1972- 1855, 18.4x38's.....\$6900

ALLIS CHALMERS

- 1971- 185, 18.4x28's, 2 Remotes, Front & Rear Weights.....\$7900
- 1964- 190XT, 18.4x34's, 2 Remotes\$4900

FORD

- 1988- 5900 16.9x30's, 2 Remotes, Under 100 Hrs., Like New.....\$14,900
- 3000 4WD, 13.6x28's, 7.5x20's, 3 Pt., PTO.....\$6900
- 2000, 4 Cyl., Gas, 12.4x28's, 3 Pt., PTO, 1400 Hrs., Very Clean.....\$4900
- 8N, 11.2x28's, 3 Pt., PTO, Very Nice.....\$3250

MASSEY FERGUSON

- 178 Diesel, 13.6x36's, 948 Hrs.....\$7900
- 1965- 185 Gas, 16.9x28's, Multipower, 2 Remotes.....\$5500
- 20- With Loader, Shuttle.....\$5000

CASE

- 1968- 1030 Cab, 18.4x34's, Rear Wheel Weights.....\$5900

SKID STEER LOADERS

- 1983- Case 1835B, Gas.....\$8900
- 1978- Case 1845 Gas, New Tires.....\$7900

OTHER NAME BRANDS

- Jacobsen F-10, 7 Gang Mower.....\$8500

TILLAGE

- Long NU-Way 4x18" Plow
- JD 1450- 6x18" Trip
- Oliver 548- 5x18" Spring Reset
- JD 2500- 5x16" Spring Reset
- JD 8450- 4x18" Rollover 3 Pt. Plow
- IH 550- 5X- 14" Cushion Trip
- IH 710- 5X Spring Reset- Coming In
- IH 710- 4X Spring Reset- Coming In
- IH 720- 5X Spring Reset
- JD 1450- 4X- 16" Cushion Trip
- White 348 4x16 3 Pt. Plow
- White 508 4x18" Spring Reset
- Oliver 508 3x16 Spring Reset
- MF 880 6X Spring Reset- Coming In
- IH 540- 4X Cushion Trip
- JD 3X Rollover Plow
- Ford 3X Rollover Plow
- (3) JD 3X 3 Pt. Plows
- JD 4x14- 3 Pt. Plow
- (2) Ford 3X Plows
- Oliver 2X Rollover
- MF- 3X 14- 3 Pt. Plow
- IH 2X And 3X Trailer Plows
- JD 3X Trailer Plow
- (10) 2X And 1X Plows
- Glenco 14 Shank- 3 Pt. Chisel Plow
- IH 12 Shank- Pull Chisel Plow
- Brillion 9 Shank- Pull Chisel Plow
- Taylorway 10' Chisel Plow w/Coulters Nice
- MF 9 Shank Chisel Plow 3 Pt.
- Pico 9 Shank, 3 Pt. Chisel Plow
- Paulk- 7 Shank Chisel Plow
- Taylorway 7 Shank 3 Pt.- Chisel Plow
- Brillion 7 Shank 3 Pt. Chisel Plow
- Case 7 Shank 3 Pt. Chisel Plow
- Buster Bars 7', 12' & 20'
- Krause 21' Wing Disc
- White 281- 12' Offset Disc
- Krause- 11' Disc
- IH 370- Finishing Disc
- JD 13' Disc
- JD 310- 14' Disc
- JD 8' Offset Disc
- (2) AC 8' Wheel Discs
- JD KBA Disc
- IH 37- 13' Wheel Disc
- JD 6' Pull Disc
- IH 5'- 1 Pt. Disc
- Glenco 10' Pull Type Field Cult.
- JD C11- 12' or 15'- 3 Pt. Field Cult.
- Glenco 10' Or 13'- 3 Pt. Field Cult.
- JD RM6- 3 Pt. Cult.
- JD RQ-6- 3 Pt. Cult.
- JD RM- 438 3 Pt. Cult.
- JD RQ4- 4X 36" 3 Pt. Cult.
- Super A Cult.
- JD- 14' Pull Type Rotary Hoe
- King Kutter 50" Rototiller
- IH 12' Cultimulcher
- JD 10'-12' Cultipacker
- Bearcat- 12' Cultipacker- New
- Brillion 14' Crowsfoot Cultipacker
- Brillion 11'-13' Cultipacker

NEW EQUIPMENT

- King Kutter Scraper Blades 6' And 7'
- Heavy Duty 7' And 8'
- King Kutter Scraper Blades 6', 7' And 8'
- King Kutter Post Hole Diggers 6", 9" and 12" Augers
- King Kutter Discs 5 1/2' And 6 1/2' - 3 Pt.
- King Kutter Grading Boxes 4', 5 1/2', 6', 7' & 8'
- King Kutter Stone Rakes 4', 5', 6', 7' & 8'
- Cornshellers- 3 Pt. And Pull Type
- Hay Tedders- 9'- 3 Pt. Or Pull Type
- Hay Wheel Rakes- 3 Pt.
- Seeders- Broadcasters- 3 Pt.
- Cultivator 1 Row- 3 Pt.
- Potato Diggers 1 Row- 3 Pt.
- Ag-Tech Preseeder
- Shaver Post Driver HD-8
- Cement Mixers-3 Pt.
- 10' Pasture Drag
- Woodman- 3 Pt. Saw

MISC EQUIPMENT

- Heads- NI 766- 6' Pickup
- IH 810 13' w/Floating Cutterbar
- NH 960 13' Platform
- NH 960 15' Platform w/Floating Bar
- JD 343 Corn Head
- JD 243 Corn Head
- Farmhand 817 Grinder Mixer
- Bin Wagon On Gear
- Bearcat 6 Ton-8 Ton Gears On Rubber- New
- 65 Gal. 3 Pt. Sprayer- New
- Kuker 400 Gal. Sprayer, Cent. Pump- 30' Boom
- NH 305 Side-Delivery Manure Spreader- New
- NI 10 Manure Spreader
- NI 18 Manure Spreader
- NI 212 Manure Spreader
- NI 217 Manure Spreader
- NI 218 Tandem Manure Spreader
- (2) JD-N Manure Spreader
- (3) Cub Manure Spreader
- NI 10' Lime Drill
- Brillion 8' Seeder
- (2) Rock Pickers
- (2) 3 Pt. Transplanters
- Little Giant 32' Elev.
- AC- 600 4 Row- No Till
- JD 43 Cornsheller
- JD 8300- 23x7" Grain Drill
- IH 510-16x7" Grain Drill w/Grass & Fert.
- Crust Buster- 3 Pt. Grain Drill 20x7" DD
- JD Loader, 148
- IH 2200 Loader
- (5) Set Of Duals-Variety Types- Including 20.8x38- New
- (16) Manure Forks
- Cabs- AC 7000
- Woodsplitter- 3 Pt.
- Wood Chipper- Royer, 3 Pt., 8"
- Unkitt 14' Stalk Chopper

HAY EQUIPMENT

- JD 3960 Harvester- Coming In
- (2) NH 846 Round Balers
- Deutz-Allis- SM-70RC Discbine
- (2) NI 279 Cuddltoners
- (2) Bale Wagons
- (7) Sickle Bar Mowers
- JD 450 7' Pull Sickle Mower
- IH Pull Type Sickle Mower
- NH 707 Harvester w/Corn Head
- 3 Pt. Bale Mover
- Pequesa Hay Tedder- New 710 PTO
- NH 258 Hay Rake- Nice
- NI 272 Cuddltoner
- NH 467 Haybine
- Gahl Forage Wagon 3 Beater w/Roof
- NH 450- 3 Pt. Sickle Mower- Coming In

ROTARY MOWERS

- Woods RM48
- Ford 909- 5' Pull Type
- Bush Hog- 6', 7'
- Woods 6' Pull
- Bush Hog 13' Batwing
- King Kutter Rotary Mowers- New 4', 5' And 6' 3 Pt. And Pull Type
- King Kutter Finish Mowers- New 4', 5', 6' & 7'- 3 Pt.

COME SEE US
YOU'LL BE
GLAD YOU DID!

