



64 Ford F-600
 12 Ft. Stake Dump
 4x2 Trans
\$1,200
Belmont Farm
301-833-9091

Stainless Steel Dry Fertilizer Spreader Box for Flotation Unit.
 10' wide, 14 ton capacity.
301-928-3009
 Daytime
301-648-5751
 Evenings

FOR SALE
 JD 7720 Combine, 4WD, 2 heads
 JD 8430 Tractor w/duals
 JD 4630, PS, 4WD, with or without 280 loader
 Various tillage and planting equipment to go with above tractors
 MC 975 grain dryer
215-932-8510
 Eves. after 7 PM



IH 175C
 1985 Good mechanical cond.
\$14,000
 Also Available:
IH 250C
 1981, good cond.
\$13,000
Belmont Farm
301-833-9091



1987 New Holland L555 Skid Steer Loader, 42 HP Diesel, Quick Detach Bucket \$10,500
ALSO: Case 1845 Skid Steer Loader, 45 HP Diesel \$8,500
Let's Deal
Call 1-800-345-2829
Curry Supply Co.
 Curryville, PA

ENFIELD EQUIPMENT INC.
 720 WHEELER SCHOOL RD.
 WHITEFORD, MARYLAND 21160
 1/2 MILE WEST OF RT. 136 ON RT. 165
 HOURS: MON.-FRI. 8-5; SAT. 8-12.
 301-452-5252
 Material Handling Equipment
 301-879-5090

TRACTORS
 JD 3020 Tractor, Power Shift
 JD 2355, 2WD, 850 Hrs., Excel. Cond.
 JD 950 Tractor, MFWD, Turf Tires, 6' Midmount Mower, Front Blade, Exc. Cond.
 JD 950, 2WD, Ag Tires, 630 Hrs.
 JD 850 Tractor, 139 Hrs., 2WD, Turf Tires, PS, Canopy, Excel. Cond.
 JD 40, Wide Front, 3PT Hitch, PTO, S# 64679
 Farmall 450 Tricycle, Average Shape
 Farmall 560 Tricycle, Fair Shape
 MF 165, Diesel, New Brakes & Clutch w/Kelley Loader
 Ford 1500, Diesel w/Flail Mower, 434 Hrs., 2WD, Turf Tires

HAY EQUIPMENT
 JD 1327 Disc Mower Conditioner, Very Good Cond.
 JD 1219 Mower Conditioner, Non-Clog Guards, Very Good
 JD 1209 Mower Conditioner, Priced To Sell
 NI 279 Cuditioner, 540 PTO
 NH 411 Discbine, Rolls Good, Hyd. Tongue Pos., Hyd. Header Tilt
 NH 268 Baler w/Ejector
 NH 890 Forage Harvester w/5/8 Pickup & 2 Row Wide
 NH 717 w/Low Profile 1 Row Corn Head 5' Hay Pickup & Direct Cut Hay Head
 NH 489 Mower Conditioner, Good Cond.

PLANTERS
 AC 333 4 Row, Air Champ., Dry Fertilizer
 AC 600 4 Row, Plate Planter, Dry Fertilizer, Fair Shape
 AC 600 9 Row, Plate Planter, 9 Row Monitor, Liquid Tanks

SPREADERS
 JD 680 Web Spreader, Tandem Axle, End Gate, Very Good
 NI 214 Web Spreader, Single Axle, End Gate

COMBINES
 JD 3300, Gas Combine w/10' Platform
 JD 4425, 378 Hrs., Also Loaded With Features, Has A New Factory Warranty, Call Today!
 JD 215, Flex Head, Black Reel
 JD 244 Corn Heads
 JD 6600 Side Hill Combine

SAVE MONEY AT BINKLEY & HURST BROS. WITH A GOOD TAX DEDUCTIBLE LEASE ON A NEW GEHL SPREADER! THE ONE SPREADER FOR A TWO-SPREADER FARM!

Handles All Kinds Of Manure - Liquid, Semi-Solid, Pen Packed, Even Frozen

Fewer Moving Parts, Fewer Breakdowns

Several Sizes In Stock:

- Model 309...1005 Gal./192 Bu.
- Model 315...1818 Gal./345 Bu.
- Model 312...1375 Gal./260 Bu.
- Model 322...2476 Gal./468 Bu.
- Model 329...3188 Gal./596 Bu.

A Gehl 300 Series Scavenger® II manure spreader handles all types of manure. It saves you time and money by bridging the gap between liquid and solid manure handling. It's the one tough, reliable machine built to cut right through your manure spreading problems. It's available in five sizes - from 912 to 2925 gallon capacities - so you can choose the one that best meets your operation's specialized needs.



Manure from confinement housing can be quickly and easily loaded and delivered to your spreader with a versatile Gehl skid loader. The heaviest loads are no problem with a Scavenger® II manure spreader. It's built with heavy duty chain drive and rugged construction throughout. Your first glance will tell you the Scavenger® II is unlike any spreader you've ever seen.



QUESTIONS ON OUR

LEASE WITH PURCHASE OPTION? CALL NOW:

CALL (717) 626-4705

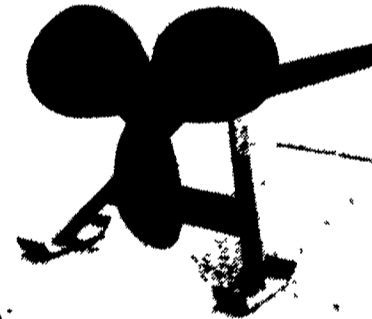
Is Your Storage Lagoon Full And Running Over? Get Quick Delivery On A New Husky Tanker From Binkley & Hurst Bros. Now! Call & Ask For Merv! Get An Easy Tax Deductible Lease!

MAKE SURE YOUR MANURE EQUIPMENT IS "HUSKY BUILT" The Name That Describes The Quality

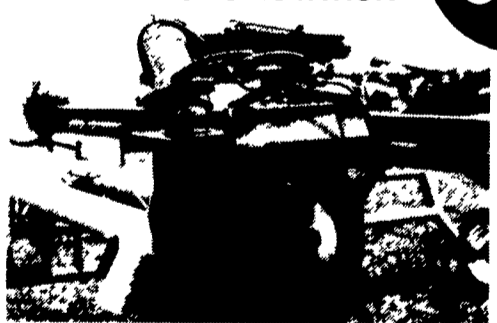
HUSKY PROPELLER



LARGE AGITATION FAN



VERTICAL AGITATOR & HYDRAULIC ROTATION



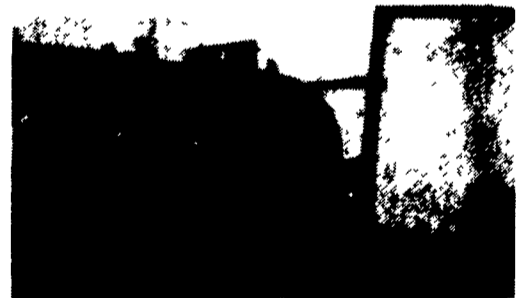
EQUIPMENT AVAILABLE

- Electric pump for transferring and flushing gutters
- K31 for hog and dairy up to medium size pits
- H5000 for dairy and poultry in large size pits
- Propeller for mixing up manure
- Tiger pump medium size lagoons
- Lagoon pump for large lagoons
- Spreaders vacuum, truck mount, bottom or top unload 1000 to 5000 imp gal sizes 5800 to 23000 litres sizes 1200 to 6000 U.S. gal sizes
- Front or rear mount soil injectors
- Barn cleaner replacement chain & parts
- Pintle type, super tough, hook & eye

See Us For All Your **PARTS & SERVICE NEEDS** Related To Vacuum Equip.!(We Stock Vacuum Pumps)



WHEN YOU BUY HUSKY VACUUM TANKERS YOU CAN LOAD WITHOUT LEAVING YOUR TRACTOR SEAT!



Call Us Now - Ask Merv For Details! (Automatic Loading A Feature In The Husky Line For Years!)

WE'LL MAKE IT!

Husky Built To Your Order

H5000 PUMP - 2300 LPM (6000 GPM) 20 TONS PER MIN., CAN BE CHANGED FROM "PUMPING" TO "AGITATING" AT FULL SPEED



TOP FILLS HUSKY LIQUID MANURE SPREADERS



For Fast Hauling Pick A Spreader Size To Suit Your Tractor. Every HUSKY TANK Is Made From Heavy Gauge Alloy Steel Carefully Lined With A Special Coal Tar Epoxy Liner.

HAULING TANKS - If You Have A Special Truck Or Flotation Vehicle



HUSKY Can Help To Make The Mounting Easy - Call Us Now!

BINKLEY & HURST BROS. INC.

133 Rothsville Station Rd. • Lititz, PA 17543
(717) 626-4705

Mon.-Fri. 7 AM - 5 PM;
 Sat. 7 AM-11:30 AM
 Sun. Closed - Lord's Day

Located 1/2 Mile No. Of Rothsville

After Closing Emergency Parts Dept.:
 717-626-0885
 717-626-5159
 717-859-8768

SALES — SERVICE — PARTS

HUSKY VACUUM TANKERS
 Vacuum Liquid Spreaders With 2 Fill Ports, 1 Rear And

1 Side - Call For A Super Deal! QUALITY BUILT-IN

See Our Replacement Pumps At Special Prices - Ask For Your Sizes & Prices - BUY NOW AT BIG DISCOUNTS!

5 Years Unconditional Axle Warranty

FEATURES

- 6mm tank with dished ends
- New tanker lined inside against rust with special coating
- Fully baffled
- Access hatch
- Level sight gauge
- 210 CFM vacuum pump, larger than normal size
- 6" (150mm) vac hose
- Secondary moisture trap
- Positive float shut off
- Vacuum pump supplied with high heat vanes