

# THE OLD FARMER'S ALMANAC

OCT. 15-21, 1990  
World Food Day, Oct. 16.

Oct 15, 1917, World War I spy, Mata Hari is executed Oct 17, 1933, Dr Albert Einstein flees the Nazi regime in Germany and arrives in the United States, making his home in New Jersey Oct 18, 1767, the boundary between Maryland and Pennsylvania, the Mason-Dixon Line, is settled by two English astronomers, Charles Mason and Jeremiah Dixon Oct 20, 1873, P.T. Barnum opens the Hippodrome in New York City, home of "The Greatest Show on Earth" *Mingle just a little folly with your wisdom*



**Ask the Old Farmer:** Is there any way to tighten-up a sagging cane-bottom chair? B W, Mo  
*Heat equal parts vinegar and water, wet the cane with this solution, and allow it to dry in the sun*  
**Home Hints:** When using gasoline to remove spots in clothing, eliminate the smell and the leftover ring by adding 10 drops of oil of sassafras and 1 teaspoon of salt to a quart of gasoline

## OLD FARMER'S WEATHER FORECAST

**New England:** Indian summer-like weather arrives, and it is glorious! A few showers begin the week in the north, then sunny, clear and warm rounds out the week  
**Greater New York-New Jersey:** Cloudy and somewhat dismal through midweek Clearing, sunny, and warm, with Indian summer-like weather to end the week  
**Middle Atlantic Coastal:** It's a soaker this week Heavy rain, mild Briefly sunny, then scattered showers Finally more rain for the weekend  
**Piedmont & Southeast Coastal:** A few cool and showery days, then a few bright and sunny days Heavy rain and a possible hurricane brewing for the weekend

## Leesport Livestock

Leesport, PA  
Oct. 10, 1990

**CATTLE 253...PDA...** Supply included 116 fat steers, and 11 head feeder cattle Cows strong to 3.00 higher. Few High Choice & Prime 1220/1360 lbs. slaughter steers 77.50-78.35, Choice 1050/1250 lbs. 74.75-77.50, Select 69.50-75.00; High Choice & Prime 1300/1570 lbs. Holsteins 72.00-74.85, Choice 1250/1475 lbs. 66.25-70.50, Select 64.50-67.50, few Standard 63.50-66.25. Few Select sl. heifers 59.75-64.00, few Standard 57.00-57.50. Breaking Ut. & Commercial sl. cows 54.75-58.75, Cutter & Boning Utility 49.75-57, few to 59.00, Canner & low Cutter 45.00-51.00, Shells down to 39.00. Few Choice sl. bullocks 67.25-72, one 76.25, Select 63.50-67.50, few 58.25-62.25. Few Yield Grade No. 1, 1100/1700 lbs. sl. bulls 62.50-67.00.

**CALVES 189...**Standard & Good 60/95 lbs. vealers 60.00-65.00, Utility 60/80 lbs. 40.00-58.00. Farm Calves: No. 1, Holstein Bulls few 130/145 lbs. 100.00-135.00, 85/125 lbs. 140.00-158, few 162.50, No. 2, 90/125 lbs. 100.00-145, few 77.00, few 80/90 lbs. 65.00-90.00; Holstein 100/115 lbs. heifers 182.50-190.00, few 80/95 lbs. 66.00-97.50. Beef cross 65/140 lbs. bulls & heifers 110.00-155.00, few 70.00.

**HOGS 166...**Barrows and gilts strong to 1.00 higher. US No. 1-2 230/255 lbs. 58.00-58.50, 1-3 220/245 lbs. 54.25-57.50,

lot 214 lbs. 53.50. Sows: .50 to 1.50 higher. US No. 1-3 310/600 lbs. sows 48.25-50.75. Boars 44.25-47.75.

**FEEDER PIGS 308...**Few US No. 1-3 20/40 lbs. feeder pigs 100.00-125.00, few 85.00, 40/60 lbs. 80.00-99.00, Utility 25/55 lbs. 50.00-76.00 --- all per hundred-weight; lot 1-3 15/20 lbs. 22.00 - per head.

**SHEEP 37...**Choice 65/105 lbs. slaughter lambs 52.00-56.00, few to 64.00, few 40/45 lbs. 137.50-157.50, few Good 70/90 lbs. 45.00. Slaughter sheep 13.00-24.00 - all cwt.

**GOATS 5...**Few Large adults 52.50-57.50, few Medium 37.50-50.00 --- all per head.

**1990 BUCKS COUNTY 4-H BEEF SALE** Champion 1165 lbs. 106.00, Reserve 1270 lbs. 110.00, remaining 13 head 910/1360 lbs. 83.00-95.00.

## Belknap Livestock

Dayton, PA  
Oct. 10, 1990

**CATTLE 70...**PDA...Couple Standard slaughter steers 57.00&57.75. Few low yielding Choice 785/1045 lbs. sl. heifers 60.75-62.50, one Select Holstein 61.00, one Standard 56.50. Few Breaking Utility & Commercial sl. cows 50.00-52.50, Cutter & Boning Utility 47.00-50.25, few high yielding 55.00, Canner and low Cutter 41.00-46.75, Shells down to 31.25. Few Yield Grade No. 1, 1200/1405 lbs. sl. bulls 60.25-65.75. Few Medium Frame No. 1, 515/690 lbs. steers 74.00-80.00. Medium Frame #1, 340/480 lbs. 69.00-74.50, 540/865 lbs. 61.75-72.50. few Medium & Large #2, 320/610 lbs. 60.00-65.00.

**CALVES 103...**Good vealers 76.00-93.00, one Choice 100.00, Standard and Good 60/85 lbs. 55.00-67.00. Farm Calves: No. 1, Holstein Bulls 90/125 lbs. 130.00-189.00, 75/85 lbs. 100.00-143.00, few No. 2, 85/120 lbs. 78.00-120.00; few

No. 1, Hol. Heifers 80/100 lbs. 100.00-165.00. Beef cross bulls & heifers 68.00-105.00, few 137.50-160.00.

**HOGS 215...**US No. 1-2 230/250 lbs. barrows and gilts 59.00-60.40, 1-3 235/260 lbs. 57.70-59.25, 2-3 230/270 lbs. 56.00-58.00, lot 1-3 220 lbs. 57.00. Few US No. 1-3 320/465 lbs. sows 44.00-50.25. Boars 40.00-44.00.

**FEEDER PIGS 64...**US No. 1-3 15/35 lbs. feeder pigs 16.00-28.00, 35/50 lbs. 27.00-37.50 - all per head.

**SHEEP 12...**Choice 75/85 lbs. wool slaughter lambs 44.00-45.00, one 55.00 - all Cwt.

**GOATS 2...**Small 28.00 - per head.

## Belleville Livestock

Belleville, PA  
Oct. 10, 1990

**CATTLE 144...**REPORT SUPPLIED BY THE AUCTION...Utility slaughter steers 60.50-68.50. Utility sl. heifers 55.75-66.50. Breaking Utility and Commercial slaughter cows 51.75-55.35, Cutter & Boning Utility 48.00-51.50, Canner & low Cutter 41.60-47.75, Shells down to 36.00. Yield Grade No. 2, slaughter bulls 59.00. Feeder Cattle: Steers 74.00-80.00 Heifers 65.00-74.00.

**CALVES 134...**Choice vealers 45.00-65.00. FARM CALVES: No. 1, 95/110 lbs. Holstein Bulls 150.00-190.00, 85/115 lbs. 100.00-147.50.

**HOGS 139...**US No. 1-2 215/250 lbs. barrows and gilts 59.00-59.60, 1-3 200/260 lbs. 58.10-59.00. US 2-3 sows 40.00-48.00.

**FEEDER PIGS 366...**US No. 1-3 feeder Pigs 15.00-25.50, 1-3 24.00-35.50 --- all per head.

**SHEEP 47...**Choice slaughter lambs 40.00-72.00. Slaughter sheep 17.00-26.00 - all Cwt.

**GOATS 30...**21.00-101.00 --- all per head.

**HOLSTEIN DAIRY COWS ...** --- PER HEAD.

## MULVANEY LIVESTOCK SERVICES



Tom Mulvaney, Jr.  
Easton, PA  
(215) 258-1670



OFFERING: Order Buying, Livestock Trucking To Leesport Sale In PA & Hackettstown Sale In NJ.

**TOP PRICES FOR DOWN & DISABLED CATTLE, Paid On Dressed Weight At Competitive Prices.**  
Also - Fat Cattle, Bulls and Steers.

NOW AVAILABLE! - Removal of Dead Cattle & Horses (Subject To Charge Based On Area)

PRESENTLY HANDLING THE FOLLOWING COUNTIES:

PA-Northampton, Lehigh, Bucks, Monroe, Part Of Berks, Carbon and Schuylkill. NJ- Warren, Hunterdon, Sussex  
Call (215) 258-1670

## CRIPPLED AND DISABLED COWS, STEERS & BULLS

Slaughter Under USDA Inspection

FREE CALL

1-800-234-COWS (2697)

215-286-9400

Wayne Taylor

Lebanon, Berks,  
Lancaster & Chester Co.

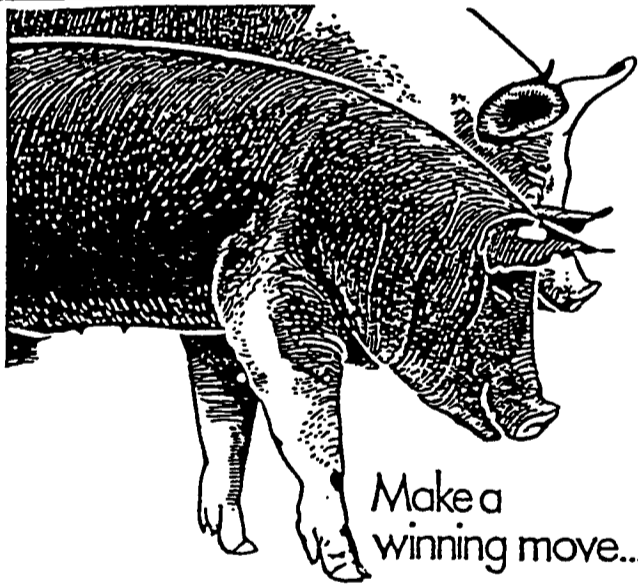
## HAY, STRAW & GRAIN SALE

Every Thursday at 1 p.m.  
Auction will continue all year long

Vintage Sales  
Stables, Inc.

(Rt. 30, 10 miles east of Lancaster in Paradise, PA)

For info. L. Robert Frame, Sr.  
717-442-4181 business president  
215-458-8518 home Glenn S. Frame  
Mgr.



Make a winning move...

\*\*\* Contract with Purina Mills, Inc.  
Now accepting new and existing sow herds

We Supply

- Quality Purina Feeds
- Sound Genetic Program
- A Service Representative To Assist You
- Competitive Contract Payment

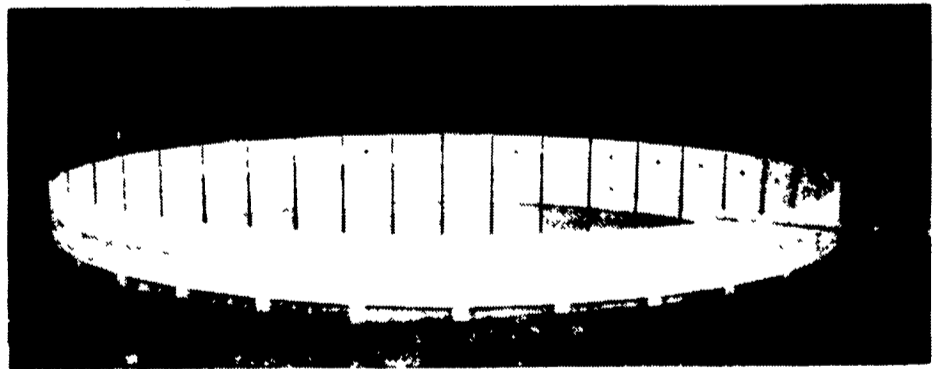
Call Us Today

1-800-873-5300

Purina Mills, Inc.  
Serving The Needs  
Of Agriculture

Manure management systems to match your kind of livestock, type of manure ...and economics

"PLAN NOW for 1990 Construction" Contact us to discuss your MANURE MANAGEMENT PLANS



## PRECAST CONCRETE - CIRCULAR TANKS

- \* 8' or 12' depth
- \* 24' thru 90' diameter
- \* Inground or above ground
- \* Exclusive: Tongue & groove vertical joints  
Continuous cable around tank  
Liquid tight closure pour at base
- \* 50 year service life



Sollenberger Silos Corp.

A Nitterhouse Company  
Box N Chambersburg, PA 17201 (717) 264-9588

SINCE BEFORE 1910

Office Number - 717-264-9588

For Upright Silos Call  
Bob Francis  
717-532-6848

For Bunker Silos & Manure Systems  
Call Tabb Justus or Mike Hair  
717-762-8663 717-263-0792