

**Central U.S. Carlot**

Beef Report  
Oct. 10, 1990

Report supplied by USDA

CENTRAL U.S. CARLOT BEEF REPORT (INCLUDES THE MAJOR PRODUCTION AREAS IN THE MIDWEST, TEXAS AND OKLAHOMA) AS OF 3 P.M.

COMPARED TO TUESDAY'S 3:00 P.M. REPORT: BREAKING AND BONDING UTILITY COW CARCASSES MOSTLY 1.00 LOWER, INSTANCES 2.00 LOWER; FEW SALES CUTTER COW CARCASSES 1.00-3.00 LOWER; BULL CARCASSES NOT ESTABLISHED. DEMAND LIGHT TO MODERATE, SUPPLIES AND OFFERINGS MODERATE.

**COW AND BULL CARCASSES FOB OMAHA BASIS 13 LOADS REPORTED**

UT, BRK 2-4, 450 & UP, 5 LOADS, RANGE 85.00-86.00, LATEST ESTB. MKT. 86.00.

UT, BNG 1-3, 400 & UP, 5 LOADS, RANGE 90.00-91.00, LATEST ESTB. MKT. 91.00.

CUTTER 1-2 350 & UP, 3 LOADS, RANGE 97.00-97.50, LATEST ESTB. MKT. 97.00.

BULLS 500/UP YG1 AND YG2 UNQUOTED.

**BONELESS PROCESSING BEEF/ BEEF TRIMMINGS 158 LOADS REPORTED**

90% LEAN 3 00-5.00 LOWER, 85% LEAN 1 00-3.00 LOWER, 75% LEAN WEAK IN LIGHT TEST, 65% LEAN 1.00-2.50 LOWER. DEMAND LIGHT TO MODERATE, SUPPLIES MODERATE. 50% TRIMMINGS LOWER ON LIGHT DEMAND AND MODERATE OFFERINGS.

**FOB OMAHA BASIS**

90% FRESH, 4 LOADS, RANGE 126.0, WT. AVG. 126.00.

90% FROZEN, 2 LOADS, RANGE 128.00, WT. AVG. 128.00.

85% FRESH, 5 LOADS, RANGE 118.0-120.0, WT. AVG. 118.70.

85% FROZEN, UNQUOTED

75% FRESH, 1 LOAD, RANGE 103.5, WT. AVG. 103.50.

75% FROZEN, UNQUOTED

65% FRESH, 3 LOADS, RANGE 82.0, WT. AVG. 82.00.

65% FROZEN, UNQUOTED.

50% FRESH, 58 LOADS, RANGE 49.00-53.00, WT. AVG. 50.81.

50% FROZEN, 34 LOADS, RANGE 54.50-55.50, WT. AVG. 54.81.

50% BOX, 3 LOADS, RANGE 53.00-54.00, WT. AVG. 53.33.

BULL 92-94, RANGE 148.0, WT. AVG. 148.00 C.

**FOB EAST TX AND OK**

90% FRESH, 24 LOADS, RANGE 125.0-127.0, WT. AVG. 125.52.

90% FROZEN, 7 LOADS, RANGE 128.5-129.0, WT. AVG. 128.71.

85% FRESH, UNQUOTED.

85% FROZEN, UNQUOTED.

75% FRESH, UNQUOTED.

75% FROZEN, UNQUOTED.

65% FRESH, 2 LOADS, RANGE 84.0, WT. AVG. 84.00.

BULL 92-94 UNQUOTED.

**CAF NORTHEAST AREAS**

90% FRESH, 12 LOADS, RANGE 126.0, WT. AVG. 126.00.

90% FROZEN, UNQUOTED.

85% FRESH, 3 LOADS, RANGE 117.0, WT. AVG. 117.00.

85% FROZEN, UNQUOTED.

75% FRESH, UNQUOTED.

75% FROZEN, UNQUOTED.

65% FRESH, UNQUOTED.

65% FROZEN, UNQUOTED.

**\*\*ABCDE AFTER QUOTES REPRESENTS DAYS SINCE LAST ACTUAL MARKET TEST. QUOTES ARE DROPPED AFTER 5 DAYS OF NO TEST OR BEFORE IF THEY NO LONGER REFLECT CURRENT MARKET CONDITIONS.\*\***

**Central U.S. Carlot**

Pork Report  
Oct. 10, 1990

Report supplied by USDA

CENTRAL U.S. CARLOT PORK REPORT FOB OMAHA BASIS INCLUDES MAJOR PRODUCTION AREAS IN MIDWEST AS OF 3 P.M.

COMPARED TUESDAY'S 3:00 P.M. CLOSE: FRESH PORK LOINS AND BOSTON BUTTS STEADY TO 1.00 LOWER; SKND HAMS STEADY TO 3.00 LOWER; SDLS. BELLIES 4.00 TO 6.00 LOWER. DEMAND MODERATE. MOVEMENT MODERATE ON MODERATE OFFERINGS.

**LOADS PORK CUTS**

50 LOADS TRIM PROCESS

PROCESS PORK, PORK CUTS

**17.5 LOADS**

**LOINS, REG., FRESH**

14-18 LBS., 8.5 LOADS, PRICE RANGE 112.00-116.00, WGHTD. AVG. 113.53.

1/2" TRIM, 14-18 LBS., 8.5 LOADS, RANGE 131.00-133.00, WGHTD. AVG. 132.35.

18-22 LBS., RANGE 115.00, WGHTD. AVG. 115.00 A.

1/2" TRIM, 18-22 LBS., RANGE 135.00, WGHTD. AVG. 135.00 A.

COMBOS 22/UP LBS., 1 LOAD, RANGE 94.00 WGHTD. AVG. 94.00.

**LOIN, BLS CTRCT**

5-7 LBS., RANGE 244.00, WGHTD. AVG. 244.00 A.

TNDRLN, MUSCLE OFF

.5 LOADS, RANGE 290.00, WGHTD. AVG. 290.00.

**BOSTON BUTT**

4-8 LBS. \* 2.0 LOADS, RANGE 82.00-85.50, WGHTD. AVG. 83.13.

1/2" TRIM, 2 LOADS, RANGE 98.00-104.50, WGHTD. AVG. 100.63.

COMBOS 8/UP LBS., RANGE 83.00, WGHTD. AVG. 83.00 B.

**SPARERIB, FRESH**

1.5-3.5 LBS., 1 LOAD, RANGE 104.00, WGHTD. AVG. 104.00.

3.5-5.5 LBS., RANGE 94.00, WGHTD. AVG. 94.00 A.

**SPARERIB, FROZEN**

1.5-3.5 LBS., RANGE 105.00, WGHTD. AVG. 105.00 D.

**LOIN BACKRIB (BOXED)**

**FRESH/FROZEN**

1.5/DN LBS., 1 LOAD, RANGE 254.00, WGHTD. AVG. 254.00.

1.75/DN LBS., .5 LOADS, RANGE 234.00, WGHTD. AVG. 234.00.

1.75-2.25 LBS., .5 LOADS, RANGE 204.00, WGHTD. AVG. 204.00.

**HAM, SKINNED, FRESH**

17-20 LBS., 7.0 LOADS, RANGE 100.00-102.00, WGHTD. AVG. 100.57.

20-26 LBS., 13.0 LOADS, RANGE 99.00-102.00, WGHTD. AVG. 100.15.

32/UP LBS., 1 LOAD, RANGE 95.00, WGHTD. AVG. 95.00.

**BELLY, SDLS**

**SKIN-ON, FRESH**

10-12 LBS., .5 LOADS, RANGE 53.00, WGHTD. AVG. 53.00.

12-14 LBS., 5.5 LOADS, RANGE 56.00, WGHTD. AVG. 56.00.

14-16 LBS., 5 LOADS, RANGE 56.00, WGHTD. AVG. 56.00.

16-18 LBS., 2 LOADS, RANGE 56.00, WGHTD. AVG. 56.00.

18-20 LBS., 1 LOAD, RANGE 52.00, WGHTD. AVG. 52.00.

20-25 LBS., RANGE 42.00 WGHTD. AVG. 42.00 A.

**PORK TRIMMINGS/ BONELESS PROCESSING PORK (CHEMICAL LEAN)**

COMBO 42% FRESH, 8.5 LOADS, RANGE 30.00-32.00, WGHTD. AVG. 31.29.

COMBO 72% FRESH, 8.0 LOADS, RANGE 83.00-87.00, WGHTD. AVG. 85.75.

**BONELESS PICNIC MEAT**

COMBO 72% FRESH, 1.0 LOADS, RANGE 90.00, WGHTD. AVG. 90.00.

NOTE: (\*) REFLECTS 1/2" TRIMMED PRODUCT BROUGHT BACK TO A REGULAR COMMODITY BASIS. ABCDE AFTER QUOTES REPRESENTS DAYS SINCE LAST ACTUAL MARKET TEST. QUOTES ARE DROPPED AFTER 5 DAYS OF NO TEST OR BEFORE IF THEY NO LONGER REFLECT CURRENT MARKET CONDITIONS.

NOTE: VALUE MAY CHANGE WITHOUT ADEQUATE TEST.



## LOOKING FOR EXTRA CASH FLOW FOR YOUR FAMILY FARM?

EXCELLENT CONTRACT AVAILABLE FOR HOGS & POULTRY

★ A STEADY MONTHLY INCOME

★ A GUARANTEED LONG TERM CONTRACT

*Check Our Prices On Quality Buildings And Equipment!*

Full Line Of Parts In Stock For Your Poultry & Hog Needs

WE SHIP UPS

SWINE & POULTRY SYSTEMS SPECIALISTS

### FARMER BOY AG.

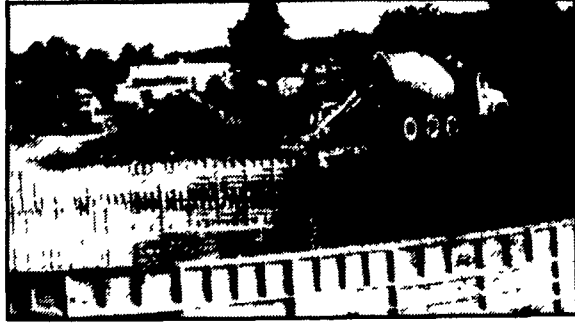
717 866 7565

# POURED SOLID CONCRETE STORAGE SYSTEMS

*17 Years Experience In Pouring Concrete Manure Pits!*



Far Left: 1-Million Gallon Circular Manure Storage Tank  
Far Right: 2 Silage Pits In-Barn Manure Receiving Pit



Construction Of Partially In-Ground Liquid Manure Tank - 400,000 Gallons

**CONCRETE PUMPING SERVICE AVAILABLE**



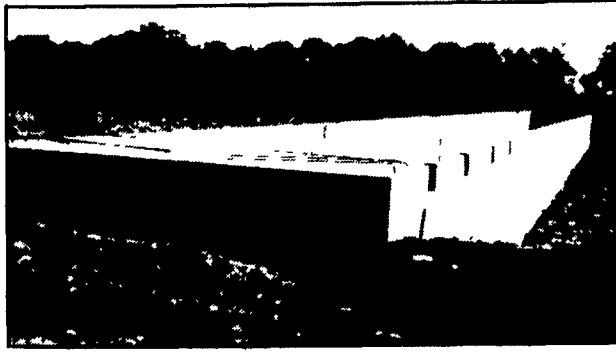
Mixer And Boom Trucks



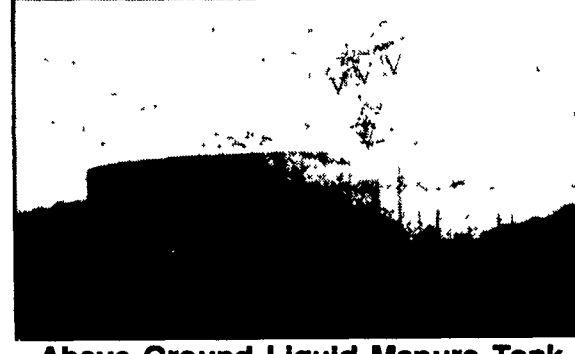
92' Boom Placing Concrete



Placing Concrete On Site



300' Long Manure Pit For Hog Confinement



Above Ground Liquid Manure Tank 425,000 Gallons

**Take the questions out of your new construction. Call Balmer Bros. for quality engineered walls.**

All sizes available round or rectangular

*Invest in Quality - It will last a lifetime.*

## Balmer Bros.

CONCRETE WORK, INC.

243 Miller Road  
Akron, PA 17501

(717) 733-0353  
6:30 AM - 3:30 PM

(717) 859-2074  
After 6:00 PM