

Lebanon Valley Livestock Auction

Fredericksburg, Pa.
Tuesday, October 2, 1990
Report Supplied by PDA

CATTLE 168...PDA...Compared with last weeks market: Slaughter cows steady to Standard 58.00-62.00. Two High Choice & Prime Choice sl. heifers 74.00&75.00, Choice 950/1165 lbs. 69.50-73.75, one Holstein 64.00, few Select & low Choice 61.00-67.00. Breaking Utility & Commercial sl. cows 53.75-55, few 58.00, low dressing down to 49.00, Cutter & Boning Utility 48.25-54, few high dressing 55.75, Canner & Low Cutter 43.75-47.75, few down to 49.25, Shells down to 32.00. Two Yield Grade No. 2, 1030/1155 lbs. sl. bulls 52.00&53.00, one No. 1, 1020 lbs. 59.50. Feeder Cattle: Few Large Frame No. 2, 515/715 lbs. steers and bulls 54.50-67.00.

CALVES 229...Vealers unevenly steady. Choice 88.00-98.00, few Good 88.00-89.00, Standard & Good 70/105 lbs. 65.00-73.00, Utility 50/80 lbs. 40.00-67.00. Farm Calves: Hol. Bulls No. 1, 90/135 lbs. 130.00-162, few down to 95.00, No. 2, 80/120 lbs. 97.00-147, few down to 70.00; Hol. Heifers 85/130 lbs. 130.00-180.00, No. 2, 80/115 lbs. 70.00-91.00. Few Beef cross 80/105 lbs. bulls and heifers 80.00-130.00.

HOGS 160...Barrows and gilts steady to weak. US No. 1-3 215/245 lbs. 58.00-58.25, 1-3 220/255 lbs. 57.50-58.25, 1-3 220/255 lbs. 57.50-58.25, 205/220 lbs. 53.25-54.50, 2-3 245/65 lbs. 55.75-56.50, 275/345 lbs. 50.25-61.60, fe 1-3 170/195 lbs. 48.00-50.00. Sows: US No. 1-3 280/615 lbs. sows 45.00-50.00, one 52.25, few Medium 340/410 lbs. 41.25-44.50. Boars 39.00-42.00, few Lt. weights 45.00-47.75.

FEEDER PIGS 0...No Market Test!
SHEEP 2...Lot Choice 100 lbs. wool slaughter lambs 53.00 - all cwt.
GOATS 0...No market test - all per head.

Leesport Livestock Auction

Leesport, Pa.
Wednesday, October 3, 1990
Report Supplied by PDA

CATTLE 301...PDA... Supply included 9 head feeder cattle and 82 head slaughter steers ..Compared to last Wednesday's

market: Slaughter steers about steady; Cows .50 to 2.00 lower. Choice 1100/1400 lbs. slaughter steers 74.00-76.25, Select 67.75-70.00; Prime Holsteins 72.00-73.75, Choice 67.75-71.25, Select 63.50-66.75. Few Choice sl. heifers 67.85-74.00, few Select 60.75-66.25. Breaking Ut. & Commercial sl. cows 51.50-54.50, couple 57.75, Cutter & Boning Utility 50.00-54.75, few to 57.50, Canner & low Cutter 45.00-49.00, Shells down to 42.00. Few Choice sl. bullocks 65.00-68.00, few Select 61.75-64.50. Yield Grade No. 1, 1250/1700 lbs. sl. bulls 61.00-67.25, few Yield Grade No.

2, 780/1320 lbs. 49.50-58.00. Feeder Cattle: One lot M-1, 300 lbs. heifers 75.00.

CALVES 179...Couple Prime vealers 112.00 & 115.50, Choice 85.00-107.00, Standard & Good 70/95 lbs. 58.00-65.00, few to 50.00. Farm Calves: No. 1, Holstein Bulls 90/125 lbs. 120.00-156.00, No. 2, 80/120 lbs. 70.00-115.00; Holstein 75/110 lbs. heifers 77.00-158.00. Few Beef cross 80/110 lbs. bulls & heifers 92.50-120.00.

HOGS 290...Barrows and gilts Highly uneven, steady to mostly 1.00 to 3.00 lower. US No. 1-2 220/245 lbs. 57.00-58.00, one lot 58.75, 1-3 225/265 lbs. 52.85-55.25, 205/210 lbs. 51.75-55.75. Sows: US No. 1-3 300/650 lbs. sows 46.50-50.00, mostly 48.00-49.00. Boars 41.50-45.25.

FEEDER PIGS 42...Few lots US No. 1-3 21/38 lbs. feeder pigs 105.00-125.00---all per hundredweight.

SHEEP 33...Choice 65/110 lbs. slaughter lambs 48.50-56.00, few 40/55 lbs. 85.00-130.00. Few Slaughter sheep 14.00-24.00 - all cwt.

GOATS 19...Few Large 35.00-72.50 ---all per head.

Carlisle Livestock Market

Carlisle, Pa.

Tuesday, Oct. 2, 1990

SLAUGHTER STEERS: SELECT 70.50-73.75.

SLAUGHTER COWS: STRONG DEMAND, ESPECIALLY EARLYBIRD COWS. BREAKING UTILITY AND COMMERCIAL 55.00-58.25; CUTTER AND BONING 52.00-56.00; CANNER AND LOW CUTTER 47.00-51.00; BIG MIDDLE 49.25-54.00; SHELLY 46.00 DOWN.

SLAUGHTER FAT BULLS, YIELD GRADE 2 - 65.00.

FEEDER CATTLE, GOOD DEMAND, FEEDER STEERS MEDIUM 85.00-97.00. LARGE 73.00-81.00; HOLSTEINS 69.00-105.00; FEEDER HEIFERS 650-950 LBS. MEDIUM 72.00-76.00. LARGE 65.00-70.00.

FEEDER BULLS: ALL WEIGHTS, MEDIUM #1 85.00-106.00; MEDIUM #2 71.00-81.00. HOLSTEINS 55.00-61.00; VEAL CALVES CHOICE 93.00-100.00; GOOD 80.00-92.00; STANDARD 70.00-78.00; LIGHT WEAK 69.00 AND DOWN.

FARM BULLS: 120.00-165.00; FARM HEIFERS 140.00-186.00.

HOGS, BARROWS AND GILTS 1.50 HIGHER: US#1-3 210-260 LBS. 57.50-58.35; OVER 270 LBS. 47.25-50.25; UNDER 200 LBS 48.50-49.50; 2's and 4's 55.25-57.25.

SOWS US #1 47.00-47.75; US #2 and 3's 44.00-46.50.

BOARS: HEAVY 43.25-44.25. UNDER 300 LBS. 48.50.

FEEDER PIGS: BY THE HEAD, ACTIVE, 20-25 LBS. 30.00-42.00; 30-50 LBS. 39.00-60.00.

SHOATS: 80-170 LBS. 58.00-92.00.

EWES AND BUCKS: 10.00-32.00.

LAMBS: GOOD ALL WEIGHTS 48.00-54.00; MEDIUM ALL WEIGHTS 41.00-47.00.

GOATS: BY THE HEAD, SMALL MEDIUM 25.00-53.00.

SALE EVERY TUES. EVE. RABBITS, POULTRY AND EGGS 5 P.M. LIVES-TOCK 7 P.M.

STATE-GRADED FEEDER PIG

SALE FRI. OCT. 12 AT 1:30 P.M. SPECIAL STATE-GRADED FEEDER CATTLE AND DAIRY HEIFER SALE FRI. OCT. 19 SALE TIME 7:00 P.M.

Valley Livestock

Athens, Pa.

Monday, Oct. 1, 1990

Report supplied by auction

HOLSTEIN HEIFER CALVES TO 197.50.

VEAL CALVES TO 90.00.

VEALER BULL CALVES TO 180.00.

SLAUGHTER CALVES 80.00 AND DOWN.

GRASSERS & FEEDERS 50.00-80.00.

LAMBS 50.00-54.00.

SHEEP 15.00-25.00.

HOGS 200 TO 250 LBS. 48.00-52.00.

SOWS 35.00-42.00.

BOARS TO 40.00.

PIGS NO MARKET TEST.

HEIFERS 50.00-64.00.

HOLSTEIN STEERS 53.00-65.00.

FEEDER STEERS 55.00-84.00.

BULLS 48.00-64.50.

COWS GOOD 50.00-54.50.

COWS MEDIUM 46.00-49.00.

COWS POOR OR SMALL 45.00 AND DOWN.

CATTLE MARKET UNSETTLED.

CALF MARKET STADY.

PONIES TO 130.00.

GOATS TO 47.50.

HORSE SALE OCT. 20.

Dewart Livestock Auction

Dewart, Pa.

Monday, October 1, 1990

Report Supplied by PDA

CATTLE 102...PDA...Compared with last weeks market: Slaughter cows uneven, about steady. Standard slaughter steers 61.00-64.50. Couple Select sl. heifers 64.25&68.00. Breaking Utility & Commercial slaughter cows 52.00-55.00, couple 56.75, Cutter & Boning Utility 50.75-54.75, Canner & Low Cutter 45.00-48.75, Shells down to 42.00. Few Yield Grade No. 1, 1375/1945 lbs. sl. bulls 58.00-65.75. Feeder Cattle: Few Medium Frame No. 1, 460/685 lbs. steers and Bulls 66.00-74.00. Few Medium Frame No. 1, 360/700 lbs. heifers 65.00-75.00.

CALVES 188...One Choice vealer 99.00, few Utility and low Standard 60/85 lbs. 62.50-72.50, couple down to 50.00. Farm Calves: Holstein Bulls No. 1, 90/130 lbs. 140.00-180.00, No. 2, 80/120 lbs. 75.00-135.00; Hol. Heifers 85/120 lbs. 137.50-200.00, No. 2, 80/100 lbs. 80.00-125.00.

HOGS 39...Few Lots US 1-2 210/215 lbs. barrows and gilts 56.50-57.00. One US No. 1-3 500 lbs. sows 48.00. One Boar 43.50.

FEEDER PIGS 60...Few Lots US No. 1-3 15/20 lbs. feeder pigs 24.00-29.00 ---all per head; lot 175 lbs. 51.00 Cwt.

SHEEP 3... Few Choice 60/70 lbs. wool slaughter lambs 42.00-44.00... - all cwt.

GOATS 2...Couple Large 60.00&75.00 - per head.

HAY, STRAW & GRAIN SALE

Every Thursday at 1 p.m.
Auction will continue all year long

Vintage Sales Stables, Inc.

(Rt. 30, 10 miles east of Lancaster in Paradise, PA)

For info. 717-442-4181 business 215-458-8518 home

L. Robert Frame, Sr. president
Glenn S. Frame Mgr.

CRIPPLED AND DISABLED COWS, STEERS & BULLS

Slaughter Under USDA Inspection

FREE CALL

1-800-234-COWS (2697)

215-286-9400

Wayne Taylor

Lebanon, Berks, Lancaster & Chester Co.

SPECIAL FEEDER SALE STOCKERS AND FEEDERS FRI. EVE., OCT. 12 7:00 P.M.

NEW HOLLAND SALES STABLES INC. THE ACTION AUCTION

SPECIAL HORSE SALE FRI. EVE. NOV. 2 7:00 P.M.

DAIRY SHOW AND SALE WEDNESDAY, OCTOBER 31

LIVESTOCK IS OUR ONLY BUSINESS

MONDAY

SLAUGHTER HOGS



EARLY BIRD HOG SALE 7:30 A.M.

Sell Your Hogs At New Holland Sales Stables, Inc. See them weighed, sold and pickup your check.

10:00 AM

HORSES MULES



1:30 PM

BEEF SALE



SHEEP



CALVES

WEDNESDAY

DAIRY 11:00 AM COW SALE 12:00 NOON COWS



We have the usual run of 50 to 100 Heifers, all ages. Loads of fresh cows and springers from our regular shippers. Also some local fresh cows and springers.

1:30 P.M. FEEDER PIG SALE

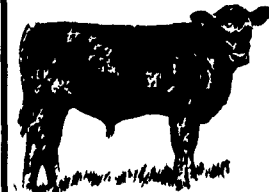


Pigs are accepted after 6:30 A.M. State graded from 8 to 12 Dairy Barn and Feeder Pig Barn are cleaned and disinfected weekly for your protection.

THURSDAY

Beef Auction 10:00 A.M.

BULLS STEERS BEEF COWS



STOCKERS & FEEDERS

1:30 P.M.

GOATS



CALVES



NEW HOLLAND SALES STABLES, INC.

12 Miles East of Lancaster Off Route 23, New Holland, Penna.

MANAGERS Norman & David Kolb - 717-397-5538

Field Representatives Luke Eberly - 215-267-6608 Homer Eberly - 215-267-30...

Sale Barn Officer Manager Roger Floyd - 717-354-4341

Order Buyer Paul Good - 215-445-6662

Feeder Pig Representative Mel Hoover - 717-354-8397