

Philadelphia Vegetables

Philadelphia, Pa.

Wednesday, October 3, 1990

ARTICHOKES CA ctn 36s 14.00 48s 11.00.
 ASPARAGUS ABOUT STEADY CA 15-lb crt exlge, lge & std few 20.00 CHILE 12-lb ctn jbo & exlge 16.00-18.00 lge 18.00 few hgr bchd 12s jbo 16.00-18.00 exlge 16.00-18.00 mos 17.00-18.00 one label 20.00 lge 18.00 few hgr one label 20.00 std & sml one label 20.00 PERU 5-kilo crt exlge bchd 12s 17.00-18.00 lge incl bchd 10s fair appear 12.00.
 BEANS LOWER various bu containers Round Green type unless otherwise stated NJ 12.00 fair qual low as 10.00 PA 10.00-12.00 mos 10.00 VA 12.00-13.00 few 14.00 fair cond 6.00-8.00 NC 12.00-13.00 CA poor cond 1.00.
 BEETS ABOUT STEADY NJ crt bchd 12s 6.00 topped bubkt few 8.00.
 BROCCOLI SLIGHTLY HIGHER CA ctn bchd 14s 11.00-12.00 mos 11.00 few 12.50 lse crowns 15.00 ME ctn bchd 14s 9.50-10.00 18s 10.00-10.50.
 BRUSSEL SPROUTS CA 25-lb ctn 16.00.
 CABBAGE ABOUT STEADY 1-3/4 buctn & crt med green unless otherwise stated NJ 3.50-4.50 mos 4.00 few 3.00 one label high as 5.00 Savoy type few 7.00 Red 7.00-8.00 PA 4-4.50 mos 4.00 Red 6.00 NY 50-lb sks lge 3.00.
 CARROTS ABOUT STEADY 48-1 lb film bags in film sacks CA med-lge 8.00 few 7.50 few 9.50 occ hgr MI med 5.00-7.00 few lwr 50-lb sacks loose jumbo CA 6.00-7.00 mos 6.00 MI 5.00-7.00 mos

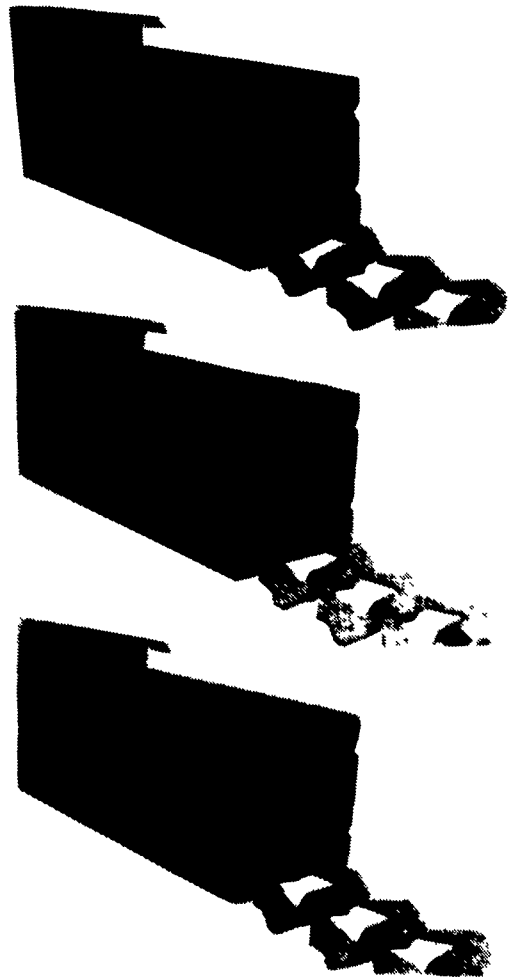
5.00 few lwr CANADA 5.50-6.00 ctn bchd 24s CA 10.00 miniature type OH ctn 20-12 oz film bags 7.00 CA ctn bchd 24s few 11.50.
 CAULIFLOWER ABOUT STEADY CA ctn film wrpd 12s 11.00-12.00 mos 11.50-12.00 some 13.00 few 10.00 one label 14.00 LI Llcrt Jacket Pack 12s 12.00.
 CELERY SLIGHTLY HIGHER CA ctn 1-1/2 doz 9.00 2 doz 9.00-11.00 ord cond 4.00-5.00 2-1/2 doz 9.00-10.50 ord cond 4.00-5.00 film wrpd 2-1/2 doz 12.00 Hearts film wrpd 18s few 11.50 MI ctn 2-2-1/2 doz 5.00.
 CHINESE CABBAGE OH celery crt 10.00 Nappa few 10.00 NJ 1-3/4 buctn Bok Choy 10.00 CA 50-lb ctn Nappa 17.00 fair cond 8.00-10.00 Bok Choy few 18.00.
 CORN ABOUT STEADY wirebound crt approx 4-1/2 doz NY Yellow 6.50-7.00 NY Yellow 8.00 White preferred variety 10.00 fair qual 7.00-8.00 GA White 9.00-10.00.
 CUCUMBERS LOWER 1-1/9 buctns & ctns waxed medium unless otherwise stated NY 7.00-8.00 fair qual 4.50-5.00 few 6.00 GA 7.00-8.00 fair qual 4.50-6.00 mos 5.00 NJ fair qual 4.00-5.00 few 6.00 fair cond 3.50 sml 4.00-5.00 few 6.00 Pickles unwaxed bubkt lge 6.00 VA 7.00-8.00 fair qual 5.00-6.00 mos 5.00 sml 5.00-6.00 Pickle, unwaxed med ord cond 5.00
 DAIKON CA 40-lb crt few 14.00.
 EGGPLANT ABOUT STEADY NJ 1-1/9 buctn & ctn wrpd med 6.00-7.00 fair qual 5.00 few 6.00 1/2 bubkt Italian type 7.00-8.00 GA 1-1/9 buctn wrpd med 7.00-8.00.
 ENDIVE ABOUT STEADY OH 1-1/9 buctn & ctn 5.00-6.00 NJ 1-1/9 buctn & ctn 5.00-6.00 mos 5.00 CA ctn 24s 10.00 BEL-

GIUM 10-lb ctn Witloof type 24.00.
 ESCAROLE ABOUT STEADY OH 1-1/9 buctn & ctn 5.00-6.00 NJ 1-1/9 buctn & ctn 5.00-6.00 mos 5.00 CA ctn 24s 10.00.
 GARLIC New Crop CA 30-lb ctn per lb Super Colossal 1.07 Colossal 1.02 exjbo .92 CHINA 22-lb ctn Super jbo .73.
 GREENS ABOUT STEADY crt & ctn approximately 1-1/2 bu bchd unless otherwise stated PA Collards 6.00 Mustard & Turnip Tops 6-6.50 Kale 5.50-6.00 Rape 6-6.50 mos 6.00 NJ Collards 5.00-6.00 Mustard & Turnip tops 5.00-6.50 Kale 5.00-6.00 Rape 6-6.50 Dandelion & Swiss Chard 7.00 OH Collards & Kale 5.00-6.00 CA 24s Red Kale 13.00 20-lb ctn Broccoli Rabe 21.00.
 LEEKS ABOUT STEADY NJ crt bchd 12s 8.00 CA ctn bchd 12s 10.00-11.00.
 LETTUCE ICEBERG ABOUT STEADY ctn 24s unless otherwise stated CA 17.00-19.00 few 16.00 fair cond 12.00-14.00 film wrpd 17.00-18.00 mos 17.50 30s 15.00 NJ 11.00-13.00 mos 12.00 few 14.00 few 10.00 ROMAINE HIGHER CA 24s ctn 14.00-17.00 mos 15.00-17.00 crt 18.00-19.00 Red type ctn 24s ord cond 4.00-5.00 NJ ctn 24s 8.00-9.00 crt 24s fair appear 5.00-6.00 BIG BOSTON CA ctn 24s 9.50-10.50 few best hgr BIBB SUPPLIES INSUFFICIENT TO QUOTE
 LEAF CA ctn 24s 15.00-17.00 mos 16.00-17.00 few 14.00 Red 15.00-17.00 few 14.00 occ 18.00 NY ctn 24s incl Red 6.00.
 MUSHROOMS STEADY PA 4-qt bkt med-lge 5-5.50 sml-med 4-4.50 10-lb ctn med 9-9.75 mos 9.00 lge 11.00-11.50 mos 11.00 packages 10-12 oz 9-9.50 3-lb ctn Shiitake 17.00-18.00 fair qual

10.00-12.00.
 OKRA GA 5/9 buct sml-med 7.00.
 ONIONS-GREEN ABOUT STEADY ctn bchd 48s NJ 9-9.50 CA 12.00-14.00 MEXICO 9.00-10.00 mos 9.00 CANADA 7.00-8.00.
 PARSLEY ABOUT STEADY bchd 5 doz Curly unless otherwise stated OH crt 9.00 Plain 10.00 NJ bubkt 8.00 CA ctn 10.00-11.00 mos 10.00.
 PEAS-GREEN SUPPLIES LIGHT CA buct few 22.00.
 PEAS-SOUTHERN SUPPLIES INSUFFICIENT TO QUOTE.
 PEAS-SUGAR ABOUT STEADY 10-lb ctn per lb CA 1.70 fair appear 1.40 GUATEMALA 1.80-2.00.
 PEPPERS ABOUT STEADY 1-1/9 buctns & ctns Calif Wonder type Green unless otherwise stated NJ lge 6.00-7.00 med 4.00-6.00 Mixed Red lge 4.00 Red med 7.00 PA exlge 7.00 lge 6.00 med 4.50-5.00 Mixed Red lge 4.50 Red med 8.00 Cubanelle med-lge 5.00 Longhots 1/2 buctn 5.00 Mixed Red 4.00 VA lge 6.00 some 7.00 10-lb ctn Jalapeno 5.00 CA lge incl fair cond 8.00 fair qual 5.00-7.00 med incl fair cond 6.00-7.00 fair qual 4.00-5.00 ord cond 2.00 15-lb ctn Red lge fair qual 8.00 NY lge fair qual 4.50-5.00 CANADA sml 4.00-5.00.
 RADISHES ABOUT STEADY ctn Red 30-6 oz film bags unless otherwise stated OH 4.00-5.00 mos 4.50 few 3.00 14-1 lb film bags 4.75 bchd 24s 6.00-8.00 mos 7.00 MN 4-4.25.
 RHUBARB NO SUPPLIES.
 RUTABAGAS SUPPLIES INSUFFICIENT TO QUOTE.
 SPINACH SLIGHTLY LOWER NJ

Savoy type bubkt 7.00-8.00 mos 8.00 fair appear 5.00-6.00 CA Flat type bchd 24s ctn 10.50 crt 11.00-11.50.
 SQUASH YELLOW STRAIGHT-NECK LOWER, ZUCCHINI ABOUT STEADY 1/2 & 5/9 buctns & ctns unless otherwise stated GA Zucchini sml-med 7.00-8.00 few 10.00 med 5.00-6.00 Yellow Straightneck sml-med 8.00-10.00 few lwr med 5.00-6.00 VA Yellow Straightneck sml-med 8.00-9.00 NJ Zucchini sml-med few 6.00-7.00 med 5.00-6.00 NC Zucchini sml-med 6.00-8.00 fair cond 4.00-5.00 Yellow Straightneck sml-med 10.00-12.00.
 SWEET POTATOES ABOUT STEADY NC 40-lb ctn US#1 uncured Jewel type 7.00-8.00 mos 8.00 fair qual 4.00 lge 4.00 NJ 1/2 buctn uncured Yellow Jersey 6.00-8.00 mos 7.00-8.00 fair qual 4.00-6.00 Red Jersey 11.00-12.00 fair qual 7.00.
 TOMATOES HIGHER 25-lb ctn Pink to Light Red 85% or better US#1 qual unless otherwise stated FL 5x6s 9.50-10.00 VA 5x6s 9.50-10.00 6x6s 8.50-9.00 NY fair qual 5x6s fair cond 3.00-5.00 mos 3.00-4.00 6x6s & 6x7s fair cond 2.00-4.00 PA 6x6s 8.00 NJ vineripe no grade mark lge 6.00-7.00 med 4.00 REPACKED LOCAL- LY VA & NY 5x6s 11.00 6x6s 10.00 6x7s 9.00 PLUM TYPE SUPPLIES INSUFFICIENT TO QUOTE
 CHERRY TYPE flats 12-1 pint trays CA 12.00-13.00 NY 12.00 PA 9.00.
 TURNIPS Topped PA 25-lb film bags sml-med 5.00 NJ 25-lb mesh sacks sml-med 4.00.

SOMETIMES GREAT IDEAS WORK!



Big Dutchman.

FEEDER OF THE PAST

Big Dutchman.

FEEDER OF THE PRESENT

Big Dutchman.

FEEDER OF THE FUTURE

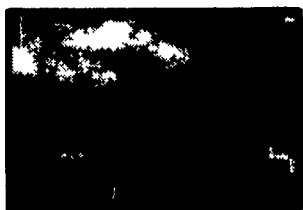
BIG DUTCHMAN CHAIN FEEDING HAS OVER 40 YEARS OF EXCELLENT RESULTS AGAINST WHICH ALL OTHER CAGE FEEDERS HAVE BEEN JUDGED. BUT OUR "GREAT IDEA" DOESN'T JUST WORK - IT GETS RESULTS. THE BEST FEED CONVERSION RECORDS IN THE INDUSTRY ARE STILL FROM FLOCKS FED BY BIG DUTCHMAN CHAIN FEEDERS. RECORDS HAVE BEEN SET WHICH COMPETITORS HAVE BEEN UNABLE TO REACH!

WANT RESULTS?

BUY



Big Dutchman.



SHEY EQUIPMENT COMPANY, INC.

Designers of Quality Systems for Poultry, Swine and Grain Handling

SYCAMORE IND. PARK
 255 PLANE TREE DRIVE
 LANCASTER, PA 17603
 (717) 393-5807

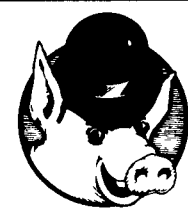
Route 30 West at the Centerville Exit.

Leesport Farmers' Market, Inc.
 Leesport, Pa. (215) 926-1307

SPECIAL FEEDER CATTLE SALE
 • Consignments Welcome

FRIDAY, OCT. 26, 1990
 7:30 P.M. Bill Weist

For The Selective Buyer...
STRATFORD Coal Stoves at
DUSSINGER'S QUALITY STOVES
 2533 OLD PHILA. PIKE, RT. 340, Smoketown, PA
 Tues., Thurs. & Fri. 10-8; Wed. & Sat. 10-5
 (717) 397-7539
 * SEE OUR NEW EFFICIENT EPA WOOD STOVES



BOSS HOG WOVEN WIRE
 They're Talking About Boss Hog!



- MOST ECONOMICAL**
- MOST DURABLE**
- REDUCES SCOURS**
- NON-SKID FOOTING**

The wire with the BUMP!

It's More Than A Sales Gimmick. It's Proof That You Are Getting Genuine Boss Hog Woven Flooring. So Look For The "Bump" To Be Sure You're Getting The Best...
 Boss Hog Woven Wire!

Our Great New "Boss Hog" Super Heavy 3 8x2, 5-16 Gauge Galvanized - Woven Wire To Fit Your Needs!

Tired Of Replacing Woven Wire...
SEE US NOW! Other Gauges Also Available.

We Ship UPS Check Our Warehouse Prices
 Swine & Poultry Systems Specialists
FARMER BOY AG.
 410 E. Lincoln Ave., Myerstown, PA 17067
 PH. (717) 866-7565 24 Hour Service
 Hours: Mon.-Fri. 7-5 Sat. 7:30-11:30