

PUBLIC SALE
OF
REAL ESTATE, FINE CHINA & GLASSWARE, ANTIQUES & HOUSEHOLD GOODS
BRICKERVILLE
SATURDAY,
OCTOBER 6, 1990
AT 9 A.M. REAL ESTATE AT 2 P.M.

Located at 436 East 28th Division Highway (Rt 322), Brickerville, Lancaster Co., PA

ALUMINUM SIDED RANCHER
Call 626-5289 or 626-8167.

FURNITURE
Oak Chest of Drawers, Dresser, Oak Buffet, Boston Rocker; Living Room Suite; Half Spindle Chairs, Nursing Rocker, Corner Cupboard, Cherry Table; 25" Color TV; Refrigerator & Stove, Maytag Wringer Washer; China Closet, Kindig Small Decorated Chest, Oak Parlor Tables & Cupboard; Goose-neck Rockers; Child's Rocker & Stools, High-chair; Sofa Bed; Rug; Oriental Type Room Rug, Sewing Machine; Gilded Picture Frames; Gone w/Wind Parlor Light.

CHINA & GLASSWARE

PEACOCK SPATTER CUP & SAUCER; Dark & Marigold Carnival Bowls; Adams (Tunstall); Pink, Green & Yellow Depression Glass, Creamers, Majolica; Damaso China; Glass Candy Lantern & Car, Ruby Glass, Fruit & Flower Bowls, Gooftus Glass, Fostoria; Earthen Bowls; Moose Creamers, Cut Glass; Pressed & Pattern Glass; Peanut Butter Glasses; Opalescent Hobnail, Cookie Jars; Green & Blue Glassware; Lustre Creamer; German Berry Set, China & Glass Baskets; Bavaria China; Blue Sponge Spatter Pitcher; Salt Jar; Soft Paste; Feather & Flow Blue, Antique Cups & Saucers; Bisque Figurines, Royal Winton Teapot; Celtic, Scinde Plates, Pink School House Cup & Saucer, Figurines, LEHN SUGAR BUCKET; Baskets; Agate; TIN; Taft Political Plate, Bank; Brass Hand Bells, Bucket, Iron Dog, Redware; Iron Kettle; S.S. Cookware; McCoy Planters, Crooksville China

LINENS: Fancywork; Fine Lap Robe; **ANTIQUÉ CLOTHING;** 40 Hooked & Braided Rugs, Yarn & Material, Celluloid Dresser Set, Moravian Star; Pencil Boxes, Valentines, Postcards, Games; Jewelry Boxes

TOYS: Antque Rocking Horse; **BLACK DOLL,** Soap Baby & China Dolls, Cloth Cat; Teddy Bear

TOOLS: Wooden Boxes; Remington Hunting Knives; Pocketknives, Dated Sword

COINS: 1883 FIVE DOLLAR GOLD PIECE; 2-1868 Three Cent Pcs.; 10¢ & 25¢ Currency, and many other items to be sold!

Terms By:
LILLIAN T. EBERLY ESTATE
717-626-5289 or 717-626-8167

Eaby & Eaby, Attys.
Mark Eaby & Thelia Eaby

HORST AUCTS.
T. Glenn AU438L
Timothy G. 859-1331 — 738-1245
Thomas A. "VOICES OF EXPERIENCE"

Public Auction Register
Closing Date Monday 5:00 P.M.
of each week's publication

SAT. SEPT. 29 - 9:30AM, 6 Air Nailers, Crew Cab Masonry, Carpenter Tools, Pick up, HD Trailer, Port-

Public Sale

OF VALUABLE REAL ESTATE
2 Separate Dwellings Situated on a Large Lot Approx. 175' of Road Frontage by 225' Antiques, Household Goods, Furniture, Guns, Watches, Coins, Tools, Riding Mower, Roto Tiller

Saturday,
October 13, 1990
9:30 A.M. Real Estate 2 P.M.
757 Strasburg Pike, Strasburg, PA, West Lampeter Twp. From Lancaster, east on Rt. 462, turn right on Strasburg Pike. Continue approx. 4 miles. Sale on left.

Dwelling #1: 1½ Story Frame with Aluminum Siding. First Floor: Eat-in kitchen w/ Modern Cupboards, Living Room, 2 Bedrooms, Full Bath. Second Floor: One Large Bedroom and Storage Area. Concrete Basement, Oil-Fired Furnace with Hot Air Wood Stove Back Up, Elec. Water Heater.

Dwelling #2: 1½ Story Frame with Vinyl and Asphalt Siding with Attached Utility Room. First Floor: Eat-in Kitchen with Cupboards, Dining Room, Living Room. Second Floor: 2 Bedrooms, Full Bath. Concrete Basement with Oil-Fired Hot Air Furnace, New Water Heater.

Both dwellings have storm windows and doors, partial wall-to-wall carpet, closets, on-site water and sewer, 1 story storage shed 18'x24'. Property has permanent shade in a country setting.

OPEN HOUSE: Saturday, September 29, 1-3 p.m.; or call auctioneer for appointment 687-6857.

TERMS: 10% down, balance on or before December 3, 1990.

Sale for:
E. MARK LEACHEY
Attorney: Harry B. Yost
Appel, Yost & Sorrentino
Miller & Siegrist Auctioneers
717-687-6857 AU-1723-L

able Lima Generator w/ Diesel Engine, located in Lanc. Co., PA on Mt. Vernon Rd. 3 mi. NE of Gap, 3 mi. S. of White Horse, from Rt. 340 go S on Mt. Vernon Rd., from Rt. 30 go north, Amos K and Rachel Stolfus, owners, Steve and Steve, Jr Petersheim, Aucts.

SAT SEPT. 29 - 9:30AM, Valuables, HH Goods, Quilts, Lots of Jewelry, Lionel Train, Coins, 1989 Chevrolet, Auto, located at Cly Baseball Field along Cly Rd., Cly, PA, Estate of

Louise A Yinger, Little Ike Eichelberger, Aucts
WED AUG 29 - 10AM New Lumber, Roofing, Doors and Supplies, located along East Earl Rd., East Earl, PA, for Farmer's First Bank, E. M. Murry Associates, Aucts

SAT SEPT 29 - 10AM, Spring Hollow Farm, 10 Acre Farmette, Personal Property, located from Morgantown take Rt 23 E to Rt 82, turn right onto Rt 82 S go approx 14 mi to

property on left, Robert and Virginia Hicks, owners, Kline, Kreider and Good, Aucts
SAT SEPT 29 - 10AM, Real Estate, 1978 Buick Electra, etc, located 1 mi N of Churchtown along Hammertown Rd next to Pebble Rock Campground, in Caernarvon Twp., Lanc Co., PA, Arlington Reider, owner, LeRoy S Horst, Aucts.

SAT SEPT 29 - 10AM, Brick Rancher, HH Goods, Coins, located at 228 Marlou Ave., Talmage, W. Earl Twp., Lanc. Co., PA, Lizzie Mae Martin, owner, Paul E Martin and John D Stauffer, Aucts.

SAT. SEPT 29 - 10AM, Consignment Farm Machinery Sale, Newark Valley, NY, Goodrich Auction Service.

SAT. SEPT 29 - 10AM, Estate of the late Tom Snow of Duke Center, PA - Furniture, Farm Equip., New Parts for Jeeps, sale held at Rt 246, Pixford, PA 7 mi from Eldred, 37 mi from Coudersport, PA, 13 mi From Olean, NY, 12 mi from Bradford, PA, Si Pepperman, Auct

SAT. SEPT. 29 - 10AM, Jeff Barge Sheep and Equipment Auction, located 251, Mendon, NY, Roy Tetsworth, Inc., Aucts

SAT. SEPT 29 - 10:30AM, 9 Acre Farm, Personal Property, located 1 mi SW of Pitman, 1 mi E of Rt 125 at Jack's Spot Cafe, 7 mi N. of Hegins, John H Stover and Minam W Stover, owners, Mike and Geo Deibert, Aucts

SAT. SEPT 29 - 10:30AM, Forklifts, Pay Loader, Trucks, Sawmill & Equip., located F & S Lumber Co., RD 2, Lycoming Co., Linden, PA approx 4 mi W of Williamsport along US Rt 220 near Linden, Seller in Repossession - Williamsport National Bank, Scott Younkin, Auct

SAT. SEPT 29 - 11AM, Farm Equipment and HH Goods, located from Shippenburg take Rt 174 E to Goodhart Rd., turn right, follow to High Rd., turn left, first farm on right, Cumberland Co., PA, John and Eva Reiff, owners, Lamar Sensenig, Auct

SAT SEPT 29 - 11AM, Sully's Garage Auction, located at the garage on Mile Lane, 1½ mi W of Rt 220, Exit #1 (Sayre Exit), Howard W Visscher, Auct Nichols, NY

SAT SEPT 29 - 1PM, Country Real Estate-3 Bdr Ranch Style Home, located approx 6 mi S of Mifflintown, along Rt 35, The Estate of Jane L Moyer, Long's Auction Service, Aucts

SAT SEPT 29 - 1PM, 42 Bred Cows, 16 Bred Heifers, 17 Open Heifers, 5 Polled Bull Calves, 15 Simmental Steers, located at the farm, Rt 38, N of Butler, PA, Rolling Ridge Farms, owners, Stough Livestock Services, Sale Mgrs

SAT. SEPT 29 - 7:30PM Fall Feeder Cattle Sales, at Friend's Stockyard, Inc., Accident, MD on Rt 215, near Keyzers Ridge.

SUN SEPT 30 - 1PM, HH Goods & Business Equipment, located at 649 Kansa Ave., Piney Ridge Development, 1 mi W of Pine Grove Mills, PA, along Rt 45, Ronald J Gilligan, Auct

OCTOBER
MON OCT. 1 - 10AM 75 Acre Dairy Farm. Located midway between Mt. Joy & Manheim, PA. 2948 Back Run Road. Sale by: Harry G. Hess. Aucts., Raymond Miller & Jim Hershey.

MON. OCT. 1 - 10AM, Annual Fall Farm Equipment Sale at Ridnick's, Rt 213, Galena, MD, Harry Rudnick and Sons, Inc., Aucts

AUCTION AUCTION

Auctioning the largest known inventory of Scorpion Snowmobile parts, accessories, repair, service & price manuals in the East for Mr. William "Silver Fox" McKinley of Felton, Pa., former Scorpion dealer, plus a large assortment of antique, mechanic, woodworking & farm tools for Mr. McKinley; for Mr. Paul Helfrich of Dallastown, Retired International truck mechanic, and several other consignors.

SATURDAY,
OCTOBER 6, 1990
8:30 A.M.

To be held within Chanceford Community Building, Brogue, PA. I-83 to York Exit #6S. Take Rt. 74 south thru Spry, Dallastown & Red Lion and continue on approx. 8 mi. to Brogue Post Office. Turn right and go ¼ mi. to hall on left.

SNOWMOBILE PARTS, FILES, PARTS BINS & ACCESSORIES, ETC.

Large inventory of Scorpion Snowmobile parts 1969-82. Engine parts for Rockwell (JLO), Cuyuna, CCW & Kiroz. Small parts to be sold in bulk lots Service equipment - tuning, fuel, etc. Seats, hoods, bumpers, slide rail assys, para rail assys, trunks, fuel tanks, windshields, Elec start kits, mufflers, accessories, some clothing & helmets, plus lots of good used hard-to-get parts New Chaparral Firebird SSX & Thunderbird track w/clips 1976-77 Scorpion used Para Slide track - like new

ANTIQUÉ TOOLS, SHOP EQUIPMENT, MECHANIC TOOLS, ETC.

Stanley #191, #113 planes, and a new #148 tongue & groove plane; other metal planes; 25+ wooden planes; spokeshaves; spoke bevel; handsaws-sharpened and in excell. cond; crosscut saws; bucksaws; 1 hp air compressor; 2 oxy-acetylene outfits; hydraulic jacks; large complete tap & die set; skil disc sander/grinder; finishing sanders, elec. grinders; tube flaring sets; paint sprayguns; 110 volt-1000 watt generator for tow trucks & emerg. vehicles; Sears 110 volt generator for car or truck or gas engine; pipe threader; pipe wrenches; lg. assortment of wrenches, sockets, mechanic tools, pullers, drills, reamers, special tools, etc. used by Mr. Helfrich, mech toolboxes, B&D saw, drills & sander; railroad jack; horse harness & hames; single & double trees, antique 6 volt Motorola car radio-complete; 20 lb. propane cylinders, heavy duty power cords; machinist tools; and much more

FARM, LAWN & GARDEN TOOLS, TRUCKING ITEMS, SAILBOAT, GUNS, ETC.

Snapper 4 hp. mower w/elec. start - like new, used 4 times; Sunbeam elec. mower, lawn roller, lawn sweeper, new 16 ft. alum. ext ladder, alum. step ladders; heavy & med. block & tackles, mounted circular saw for Farmall H or M; endless belts; snowplow frame for Jeep, two 30 gal. oil tanks w/pumps; 12 - 3 ft. sections of stainless steel chimney flue; 8 sets tire chains; new 10.00x20 truck chains; log chains, tow chins of all sizes; HD ratchet chain binders; clevises; come-along; New rattle for Gleaner "G" combine; 20, 30, 40, 50 & 70 series drag chain; hydraulic cyl w/hoses & extensions; coils of wire & cable, plow parts, points, shins, etc.; elec. fences -110v & 6v; 2 new elec. brake controls for trailer; wheelbarrow; hand trucks; 3 gal. sprayer; deep well submersible pump w/fiberglass tank; 15 gal. drum of car wash compound; cyclone seeder; portable air tank, jackstands, car mats - new & used, creepers, shovels, rakes; tampers; thatcher, picks, mattocks, scythe, pry bars, splitting mauls, wedges, cant hook, chain hoist, TV tower, Mossberg 410 gal bolt-action shotgun - 3" chamber, Mossberg 22 cal rifle w/ tube magazine, Remington Scopemaster 22 rifle - clip magazine w/scope, 10 ft. Snark sailboat w/sail, boat oars, 6" reflecting telescope, fishing rods, push mower, folding captain's chairs, lots of parts, hardware, nuts & bolts, etc. and many items not listed

TERMS: Cash to strangers; checks w/acceptable I.D.

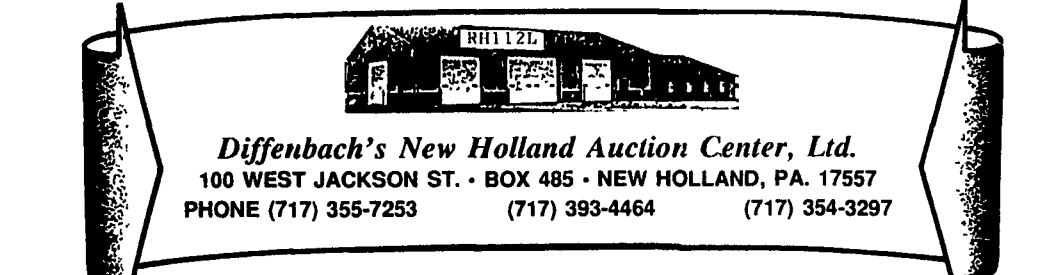
BOB & TOM SECHRIST,
Auctioneers Lic. No. 820 & 821
Andersons & Sechrists, Clerks

Delicious home-cooked soups & pies, smoked hotdogs, etc. by Chanceford Volunteers!

FAWN GROVE, PA. 302-4370 **BOB & TOM SECHRIST** **RED LION, PA. 244-2875**
Auctioneers
"Total AUCTION Service"
Lic. Nos. #20 & #21

SPECIAL EQUIPMENT SALE

At



Diffenbach's New Holland Auction Center, Ltd.
100 WEST JACKSON ST. • BOX 485 • NEW HOLLAND, PA. 17557
PHONE (717) 355-7253 (717) 393-4464 (717) 354-3297

FRIDAY, OCTOBER 12, 1990
9:00 A.M.

Tractors & Horse-Drawn Farm Equipment- Supplies- Small Items

Consignments still being accepted. A list of your sale items must be in our office by Tuesday, October 2, to be included in our complete listing in the Saturday, October 6 issue.

For More Information Contact Abe Diffenbach At 717-355-7253.

New Customers and out of state buyers must have current bank letter of credit with guaranteed amount or cashier checks.

Diffenbach's Aucts. 225L
Bonded Licensed Livestock Dealer And Order Buyer

NEXT FARM EQUIPMENT SALE FRIDAY, NOVEMBER 9