

Shenandoah Valley Livestock

Harrisonburg, Va.
Sept. 15, 1990

Report supplied by auction

STEERS M&L-1 300-500 LBS. 98.00, 107 00, 115.00; 500-700 LBS. 82.00-93 00, 700-1000 LBS 75.75-87.00; HOLSTEIN 300-1000 LBS. 63.50-80.00. S-L & M&L-2. 500-700 LBS. 75 00-84 50; 700-1000 LBS 72.00-77.50 FEEDER BULLS. 300-500 LBS 85.00-105.50; 500-700 LBS. 79.00-98 50, 700-800 LBS. 62.00-71 00. HEIFERS: 300-500 LBS 81 00-89.50, 500-700LBS. 76.00-84.50; 700-1000LBS 65.00-72.00. S-L & M&L-2 300-500 LBS. 72 00-80 25; 500-700 LBS 65.00-70.50 STOCK COWS BEEF PAIRS 625 00-950 00, SPRINGERS 400 00-500 00, BABY CALVES BY THE HEAD 85.00-150 00, CWT. 95 00-136.00 SLAUGHTER COWS: UTILITY AND COMMERCIAL 2-4 48.50, 51 75, 55 75, CANNERS AND CUTTERS 1-3 45.75-50 50 SLAUGHTER BULLS 1&2 62 00-66 50 LAMBS. BLUE O HIGH CHOICE AND PRIME 48 25, RED O CHOICE 47 25, FEEDER LAMBS CHOICE 53 00-54 00, SLAUGHTER EWES 12 00-14 75. BOARS 1 HEAD, 40 25 SLAUGHTER CALVES GOOD AND CHOICE 250-500 LBS 74 50-91 50

Valley Livestock

Athens, Pa.

Monday, Sept. 17, 1990

Report supplied by auction

HOLSTEIN HEIFER CALVES TO 205 00 VEAL CALVES TO 98.00 VEALER BULL CALVES TO 180 00 SLAUGHTER CALVES 80 00 AND DOWN GRASSERS & FEEDERS 50 00-88 00 LAMBS 50 00-58 00 SHEEP 14 00-30 00 HOGS 200 TO 250 LBS 48 00-51 00 SOWS 38 00-45 00 BOARS 39 00-42 00 PIGS 15 00-38 00 HEIFERS 52 00-60 00 STEERS NOT ENOUGH FOR MARKET TEST FEEDER STEERS 50 00-79.00 BULLS NO TOP BULLS, MEDIUM BULLS 53 75-57 00. COWS GOOD 55.00-58 75 COWS MEDIUM 48 00-52 00. COWS POOR OR SMALL 50 00 AND DOWN CATTLE MARKET STRONG CALF MARKET STEADY HORSES UP TO 560.00 EACH.

PONIES TO 110.00. GOATS UP TO 60.00. FOR SEPT. 24 SALE, ENTIRE FLOCK OF SHEEP, 60 YOUNG EWES, 60-70 EWE LAMBS.

New Holland Dairy

New Holland Sales Stables

Wednesday, Sept. 19, 1990

Report supplied by auction

REPORTED RECEIPTS OF 37 COWS, 106 HEIFERS, AND 4 BULLS. COW MARKET STRONGER; HEIFER MARKET STEADY. PA FRESH COWS. 1000.00-1750.00 PA FRESH COWS, PUREBRED AND GRADE COWS: 1225.00-2300.00, SPRINGERS 1150.00-1750.00. PA FRESH COWS. 850.00-1600.00. PERRY COUNTY FRESH COWS: 1025.00-1650.00 WISCONSIN FRESH COWS. 2000 00-2075 00 LOCAL SPRINGING HEIFERS 810 00-1200 00 SHORTBRED 760 00-1150.00. BREEDING AGE OPEN 640 00-825 00 SMALL OPEN. 375 00-510.00. BULLS 340 00-740 00 VACCINATED HEIFERS BRING A PREMIUM LOCAL COWS 830.00-1410 00

St. Louis Cattle, Hogs

Thursday, Sept. 20, 1990

OPENING MID-SESSION WEEKLY CLOSE CATTLE AND CALVES: 600 (0 SLTR, 600 FDRS) RECEIPTS CONSISTS OF FEEDER CATTLE AND COWS FOR REGULAR THURSDAY AUCTION NO SALES REPORTED ON SLAUGHTER. SLAUGHTER CLASSES. COWS CUTT, UTIL, COMM BULK SALES HI-DRESS % LO-DRESS % BREAKING 2-4 BONING 1-2 LOW TO AVG CUTTER RECEIPTS THIS WEEK 1,500 WEEK AGO 1,300; YEAR AGO 1,500 FOR THE WEEK, SLAUGHTER STEERS 1 50-2 00 HIGHER SLAUGHTER HEIFERS FULLY 1 00, INSTANCES 1 50 HIGHER COW FIRM TO 1 00 HIGHER BULL WEAK TO 1.00 LOWER. SLAUGHTER SUPPLY MAINLY CHOICE STEERS AND HEIFERS WITH SEVERAL LOTS YG 2-3, AROUND 10% COWS AND LIGHT SUPPLY HOLSTEIN STEERS.

Isennock Auction

New Park, Pa

Monday, Sept. 17, 1990

Report supplied by auction

SLAUGHTER COWS: GOOD 52.00-55.00; LOW TO GOOD 51.00 AND DOWN VEAL CALVES 115-125 LBS. 100.00-140.00; 100-110 LBS. 110.00-140.00; 90-95 LBS. 90.00-132.00;

75-85 LBS. 79.00-125.00; WEAK 79.00 AND DOWN. HOLSTEIN HEIFERS. 80-140 LBS. 122.00-187.00. FEEDER CATTLE, STEERS: HOLSTEINS 945-1030 LBS 59.75-60.00; 1 AT 430 LBS. 82.50; BULLS 450-630 LBS. 64.00-77 00. SOWS: GOOD 410-600 LBS 44.00-46.25; OTHERS 42.00 AND DOWN. BOARS: 440-650 LBS. 40.00-41.00 GOATS: MEDIUM 42.00-48.00 HEAD; SMALL 25.00-35.00 HEAD.

Buffalo Produce

Mifflinburg R3

Sept. 17, 18, and 20, 1990

Report Supplied by Auction

APPLES: RAMBO, YELLOW DELICIOUS, MACINTOSH 6.00-12.00 BU. BEETS: 4.00-6.50 1/4 BU. CABBAGE: 3.00-6.00 50 LBS. CANTALOPES: 1.05 EACH. CORN: .75-1.60 DOZ. GOURDS: 3.50-7.00 1/4 BU. SQUASH: BUTTERNUT 4.00-6.00 BU.; ACORN 4.00-6.00 BU. PUMPKINS: NECK 1.00-1.85 EACH; FACE 25-1.95 EACH. PEACHES: 12.50 BU. PEPPERS: 3.00-7.00 FOR LARGE; 3 00-6 00 FOR MEDIUMS; RED 3 00-9 00, YELLOW 6.00-10.00, ALL 1 1/9 BU. TOMATOES 3.00-11.75 25 LB. 1/4 BU. WATERMELONS: SEEDLESS 85-1 55 EACH; CRIMSON AND MIRAGE 50-2.00 EACH. ZUCCHINI: 5.00 1/4 BU. GREEN BEANS: 3.50-9.00 1/4 BU. YELLOW BEANS: 4.00-10.00 1/4 BU. CUCUMBERS: 7.00-13.00 1 1/9 BU. INDIAN CORN: .15-.50 EAR. AUCTION DATES NEXT WEEK ARE MONDAY, TUESDAY AND THURSDAY. WATCH FOR CHRISTMAS TREE AUCTION TUES. NOV. 20, AND TUES. DEC. 4.

Pennsylvania Livestock Auction

Waynesburg, Pa.

Thursday, Sept. 20, 1990

Report Supplied by PDA

CATTLE 570 COMPARED WITH LAST THURSDAY'S MARKET, SL COWS 50 MOSTLY 1 00 HIGHER BREAKING UT. & COMMERCIAL SL COWS 50 00-55 00, HIGH YIELDING COMMERCIAL 55 50-60.00, CUTTER & BON UT 48 00-52 00, CANNER & LO CUTTER 42 00-48 25, 25 HD BRED STOCK COWS SOLD RETURN TO FARM 55 00-61 00 YIELD GRADE NO

Greencastle Livestock

Greencastle, Pa.

Thursday, September 20, 1990

Report Supplied by PDA

CATTLE 292. COMPARED WITH LAST THURSDAY'S MARKET, SL COWS STRONG MOSTLY .75-2.00, CHOICE ONE 1100 LBS. 73.75, FEW SELECT 66 85-70 00, ONE SEL HOLSTEIN 61 25 BREAKING UT. & COMMERCIAL SL COWS 53.50-58 00, FEW BB 64.50, CUTTER & BON UT 53.00-58.85, FEW 60.25, CANNER & LO CUTTER 46.75-52 25, SHELLS DOWN TO 40.00. YIELD GRADE NO. 1 960-1890 LBS. SL BULLS 61.00-69.10 FEEDER CATTLE: STEERS FEW M-1 400-475 LBS. 74.00-79.00, FEW L-2 380-400 LBS. 70.00-76 00. HEIFERS FEW M-1 300-615 LBS. 66.50-76 00 CALVES 557 FEW CHOICE 91 00-96.00. STAND & GD. 70-95 LBS 66 00-74.00. UT. 60-85 LBS. 54 00-65.00 NO. 1 HOLSTEIN BULLS 90-130 LBS 135.00-172.00, FEW 180 00, NO. 2 80-120 LBS. 75.00-130.00. NO. 1 HOL. HEIFERS 85-110 LBS. 140.00-227.50, NO. 2 65-100 LBS. 70.00-145.00. BEEF CROSS 80-110 LBS. BULLS 100.00-145 00, 80-100 LBS HEIFERS 70.00-105.00.

Manwiller Grabs Champion Denver Steer

DENVER (Lancaster Co.) — "Buster," a 1,157-pound purebred Polled Hereford, took top beef championship at the Denver Fair last week.

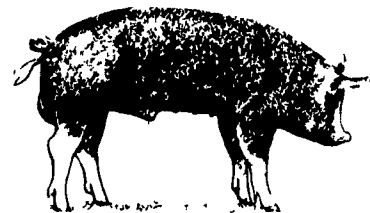
It was a first for Jeremy Manwiller, 14, of Robesonia. Manwiller has been exhibiting 4-H steers for five years, and this is his first grand championship.

The steer was sold to Wilmer Kreider of Stauffer's of Kissel Hill for \$1,358.64, or \$1.02 per pound.

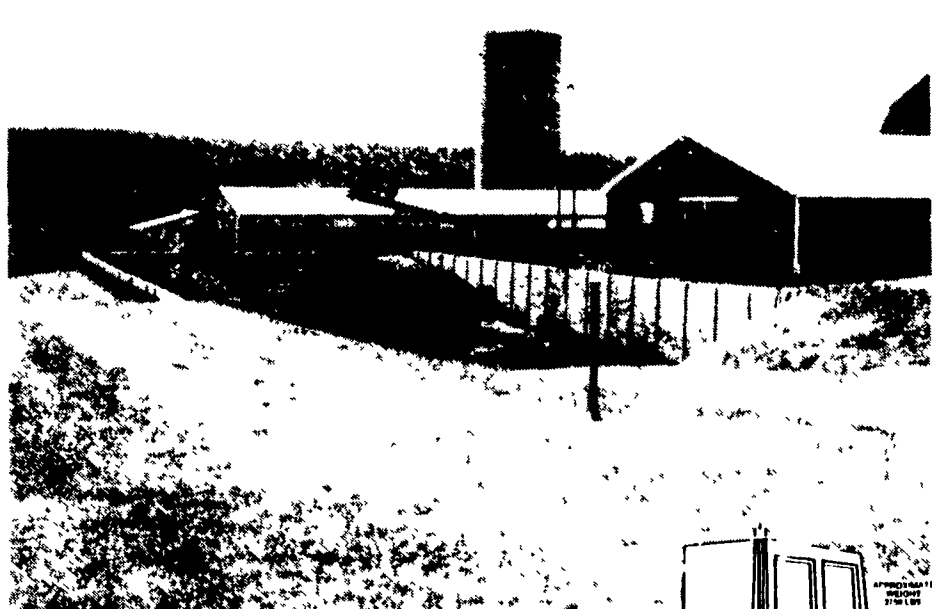
Traci Gelsinger, 18, exhibited the senior showmanship award at

the fair. She exhibited "Southern Comfort," a 1,095-pound Simmental purebred. Amy Eshelman, 16, Gouglersville, took the reserve showing with her 1,253-pound steer.

Jodie Weaver took the market steer division's reserve champion honors with "Abie," a 1,455-pound Angus. Blue Ball National Bank paid 91 cents per pound, or \$1,324.05 for the animal. The remaining market steers sold for an average of 85 cents per pound.

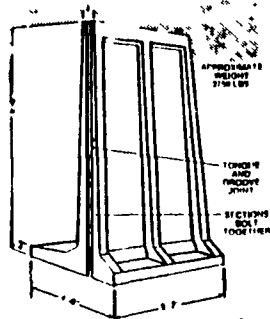


Manure management systems to match your kind of livestock, type of manure ...and economics



8' PRECAST CONCRETE WALLS

- * Tongue & groove vertical joint
- * All units bolted together
- * Rectangular or square tanks
- * Access ramp capabilities
- * Allows customer to pour floor & save \$\$\$



Sollenberger Silos Corp.

A Nitterhouse Company
Box N Chambersburg, PA 17201 (717) 264-9588

SINCE BEFORE 1910

Office Number - 717-264-9588

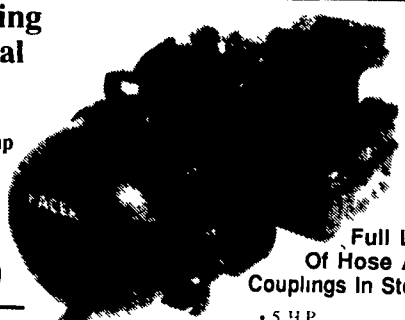
For Upright Silos Call Bob Francis 717-532-6848 Evenings
For Bunker Silos & Manure Systems Call Tabb Justus 717-762-8663 or Mike Hair 717-263-0792



Your Complete Headquarters For Sprayers And Parts

Self-Priming Centrifugal Pumps

• 'S' Series Pedestal Pump 1 1/2" or 2" Ports
Reg \$125 00
SPECIAL \$110.00



PACER PUMPS

Features:
• Self-priming to 20 feet
• Total heads to 120 feet
• Capabilities to 200 U.S. GPM
• Built in check valve
• Equipped with 1 1/2" or 2" female threaded connections, NPT

• 3 HP 'S' Series 1 1/2" Or 2" Ports
Reg \$205 00
SPECIAL \$179.00

• 5 HP 'S' Series 2" Ports
Reg \$242 00
SPECIAL \$210.00

• 5 HP 'S' Series With I/C Briggs Engine 2" Ports
Reg \$305 00
SPECIAL \$275.00

Full Line Of Hose And Couplings In Stock!

We Also Stock A Complete Line Of:

TeeJet
Sprayer Nozzles And Accessories

Hyprow
Pumps And Accessories

• Sprayer Hose
• Ball Valves
• Nylon Fittings
• Poly Tanks

PAUL B. ZIMMERMAN, INC.

295 Woodcorner Rd., Little, PA 17543
1 Mile West of Ephrata

HOURS
Mon, Tues, Fri 7-8:30
Wed, Sat 7-9:30
Sun 7-4:00

HARDWARE • FARM SUPPLIES • CUSTOM MANUFACTURING • CRANE SERVICE