

## 27th Annual Pennsylvania Suffolk Ewe Sale

Sat., Oct. 6, 1990  
At 6 P.M.

Keystone International Show  
Harrisburg, Pennsylvania  
Farm Show Complex  
65 Head

Bred Yearling Ewes &  
Open Ewe Lambs  
Consigned By

Leading Breeders  
Catalogs On Request  
Pennsylvania Suffolk  
Association

R2 Hunter Road, Stoneboro, Pa. 16153  
814-786-7768

## Belleville Livestock Market Wednesday, September 26, 1990

1:30 P.M.

### Complete Milking Herd Dispersal

Selling 32 head from Western Penna. of registered and grade Holstein cows including: 29 registered, 6 recently fresh, 13 due next 3 months, the rest in all stages. Health charts, pregnancy checked.

A good herd of young cows in full production.

For more information call:  
Gene Glick  
717-667-2703

## Dairy and Livestock Sales

### Public Auction Register

Closing Date Monday 5:00 P.M.  
of each week's publication

SAT. OCT 20 - 9AM, 8 Acres, RE, Antiques, HH Goods, located at 275 Whitehall Rd, W. Cocalico Twp, Lanc Co, PA, Eugene S Harting and Arlene G Harting, owners, T Glenn Horst and Sons, Auctions

Duncannon, PA off Rt. 274 on Roseglen Rd, 1/4 mi first farm on left, Charlotte Fuller Estate, King's Auctions, Inc, Auctions

SAT OCT 20 - 9:30AM, RE-12 30, Very Nice Approx 45 Acre Farm and Buildings, Approx 42 Acres Tillable plus Approx 55 Acres Mountain Ground, Woodshop Tools, Tractors

SAT OCT 20 - 9AM Sharp! Real Estate-55 Acre Farm, located 4 mi W of

and HH Goods, located 1/4 mi E of Aaronsburg, PA, off Rt 45, To See Call Ron 814-237-0189, Elizabeth Burd and the Late James L Burd, owners, Ron Gilligan, Auct

SAT OCT 20 - 10AM, Farm Tractors & Equipment, Lawn & Garden Tractors and Guns, located on Laurel Hill Road, RD 2, Mt Pleasant Mills, PA, just off Dresslers' Ridge Rd, Juniata Co., Elwood (Woody) C Flowers, owner, Longacre and Lauver, Auctions

SAT OCT 20 - 10AM, RE, Antiques, Farm Equip, Tools & HH, located Manada Bottom Rd, RD 7, Box 1375, Harrisburg, E Hanover Twp, Dauphin Co, PA, Est Earl F Elliott, Ebersole and Shoop, Auctions

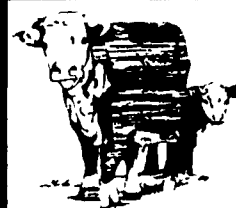
TUES OCT 23 and WED OCT 24 - 9AM both days, Quilts, Crafts, & Buggies, Diffenbach's New Holland Auction Center, Ltd, 100 West Jackson St, New Holland, Pa 17557 Diffenbach's Auctions

WED OCT 24 - 10AM, Antiques and HH Goods, located at 1335 Landis Rd, E Cocalico Twp, Lanc Co, PA, Paul H Fox, owner, T Glenn Horst and Sons, Auctions

THURS OCT 25 - 9:30AM, Construction Equip, Antique Tractors, Hit & Miss Engines and Tools, located 52 Pitney Rd., E Lampeter Twp, Lanc, PA, A L Sheaffer, owner, Miller and Siegrist Auctions

THURS OCT 25 - 1PM, 92 Acre Dairy Farm, located Rt 1, Box 2104 Jonestown, Swatara Twp, Leb Co., PA, Abe and Ruth Lefever, owners, Harry H Bachman, Auct

FRI OCT 26, State Graded Feeder Pig Sale, Exit 12 East off I-81, Carlisle Livestock Market, 717-249-4511



## FEEDER

### CATTLE SALE

Expecting  
300 Head

WEDS.,  
SEPT. 26  
7:30 P.M.

- \* Clean Local Cattle
- \* Super Clean Yards
- \* Weighed on Arrival Until 5 P.M.
- \* Quick Settlement
- \* Quick Unloading
- \* Quick Loading Out

### QUALITY REPUTATION!

We have the experience and we work hard for you! Cattle are sold in the order received.

**FOUR STATES'**  
Livestock Sales  
For information or for FREE advertising for:

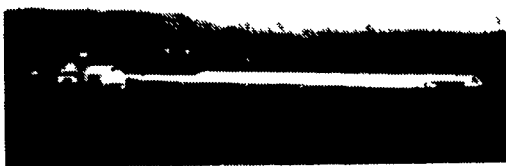
(301) 733-8120  
in Hagerstown  
since 1935

Other Sales  
Sept. 26,  
Oct. 10 & 24  
Nov. 7

## PUBLIC AUCTION

107.4 ACRE DAIRY &  
POULTRY FARM

SAT., OCTOBER 6, 1990  
AUCTION TIME- 1:00 P.M.



**DIRECTIONS:** From PINE GROVE take Route 443, east approx. 5 miles, turn left toward ROEDERSVILLE, 1/2 mile to T road, turn left to first farm on left. Washington Township, Schuylkill County, PA.

### 3 STORY FRAME HOME

Includes lg. kitchen w/built-in cabinets, living room, family room, 1 1/2 baths, 4 bedrooms. Coal fired hot water baseboard heat, wood stove hook-up.

### FRAME BANK BARN

W/34 stanchions, Surge pipeline milker w/auto. washer, new barn cleaner, Zero milk tank. 2 wells on property. 14'x52' concrete silo w/unloader - trench.

BLOCK GARAGE & SHOP - HEIFER & DRY COW STALLS, TWO 44'x400' 2 STORY BROILER HOUSES.

100,000 total capacity, well maintained, in good operating condition. Presently on contract w/Wenger's Feeds. Also includes 65 K.V.A. automatic generator.

Approx. 80 ACRES TILLABLE, 8 AC. PASTURE, 15 AC. WOODLAND, having sandstone type soil w/gentle slope in high state of cultivation. Spring fed pond, stream.

**NOTE: VERY GOOD INCOME FROM POULTRY HOUSE CONTRACT. Plus dairy & farm land. Call auctioneer now for information on contract income, expenses, etc.**

**TERMS:** 10% down day of auction. Balance at final settlement March 15, 1991. For private appointment to see this fine farm, or assistance to obtain financing call Paul E. Martin, Auct., 717-733-3511.

**OPEN HOUSE: SATURDAY, SEPTEMBER 15, 12:00 Noon-3:00 P.M. or by appt. Balance of farm may be seen any time. All herein information is believed to be accurate but is being used for advertising purposes only.**

Auction By:

**J. EARL ZIMMERMAN  
RICHARD A. ADAMS, ATTY.**

Auction Conducted By:

**J&P Auctions  
Paul E. Martin, Auct. AU-001601-L  
Ephrata, PA 717-733-3511  
John D. Stauffer, Auct. AU-001509-L  
Manheim, PA 665-5099**

## FEEDER CATTLE Consignment Sale

Tuesday, Oct. 2, 1990  
8:00 P.M.

PENNS VALLEY  
LIVESTOCK AUCTION

Centre Hall, PA.  
At The Intersection Of  
Rt. 45/144  
814-349-8760 —  
814-364-1796

TERMS: Cash Restaurant Open

\* Weekly Livestock Auction Every Tuesday-7:00 P.M.

## PUBLIC SALE OF REAL ESTATE, ANTIQUES & HOUSEHOLD GOODS ROTHSVILLE

SAT., SEPTEMBER 29,  
1990

At 9 A.M. REAL ESTATE AT 2 P.M.

Located at 1227 E Newport Road, Warwick Township (Rothsville), Lancaster Co., PA (Directions Rt 772 to Rothsville, turn west onto E Newport Rd)

### RANCHER - ALUM. SIDED ATTACHED 2-CAR GARAGE

Call 215-267-6726, 626-7759 or 626-8965  
Antique Corner Cupboard; Walnut Wash Stand, Walnut Cottage Bureau; Round Oak Extension Table; Oak Dresser; Blanket Chest, Walnut Drop Leaf Table; Oak Knock Down Wardrobe, 5 Leg Cherry Drop Leaf Table, Slant Desk (Bookcase Top, Claw Feet), Depression Bedroom Suite; Oak Buffet, Empire Bureau; Walnut Parlor Table; Cradle; Parlor Table & Rocker, Cedar Chest; Oak Library Table; Living Room Suite; G.E. Washer & Dryer; Freezer, Refrigerator; Electrolux; Air Conditioner; Safe, Pedestal Table; Oak Pressed Back Chair; Taborette, Quilting Frame; Iron Crib, Brass Clothes Tree, Lamps

Flow Blue China, Ironstone Teapot; Majolica, Austrian China, Fruit & Flower Bowls; Noritake; Pink E M & Co., Antique & Collector Plates; Pressed & Pattern Glass, Lead Crystal, Silverware; Iron Fry Pan; Decorated Tinware; Pictures, Baskets; Brass Urn  
LINENS Quilts, Comforts, Tablecloths; Counterpanes, Braided Rugs; Quilting Patches  
BOOKS 2 - History Church of Brethren; Children's Books

TOOLS, COINS Silver Dollars; Large Indian Head Cents, "V" Nickels

Terms By:

**ANNA E. FORNEY**

John Gibbel, Atty

Food By Middle Creek Women's Fellowship

## HORST AUCTS.

T. Glenn AU438L  
Timothy G. 717-858-1331 — 717-738-1248  
Thomas A. VOICE OF EXPERIENCE

No Out Of State Checks Unless Accompanied By A Current Bank Letter.

## PUBLIC AUCTION

VALUABLE REAL ESTATE  
& FARM EQUIPMENT  
SAT., OCTOBER 20, 1990  
9:00 A.M.

Located in Penn Township, Lancaster Co., PA. From Litz follow 501 north to traffic light at Newport Rd. go west onto Newport Rd. 2 miles to Evans Road turn left, go to first farm on right.

### FARM 81 ACRES M/L

Real Estate will be offered at 11:00 A.M. and consists of 81 acres M/L located in Penn Township, Lancaster County, Pa. Thereon erected a large frame bank barn with tobacco curing shed attached. Spacious garage, utility shed, frame farm house with three bedrooms, 1 1/2 baths, living room, large kitchen and dining area, summer kitchen attached. This farm in good state of cultivation and conservation. Open house will be Friday, Sept. 21, 4:00 P.M. till 6:00 P.M. or Oct. 6, 12:00 (noon) till 4:00 P.M. or by appointment with auctioneer (717) 626-2636. Terms - 10% down day of auction, balance on or before January 15, 1991.

Farm Equipment & Personal Property consists of the following items, 1410 Case diesel tractor, 3200 hrs., recent overhaul, I.H. 504 Standard tractor, I.H.C. 444 tractor with 1850 loader 2 buckets, John Deere 40 tractor with cultivator, 6343 roll over plow, New Idea P.T.O. spreader, 10' Brillion cultipacker, 3 section spring harrow, J.D. 225 offset disc, 9' cultipacker, 3 pt. sprayer, New Idea 7' mower, 30' Zimmerman elevator, corn drag, I.H.C. 510 grain drill, 14' Cardinal grain elevator, 479 New Holland haybine, 3 pt. hitch carry all, 3 pt. fertilizer spreader, spike harrow, Neimeyer tedder, I.H. 2 row tobacco planter, 2 McCurdy bin wagons, J.D. & N.H. chassis, New Holland 69 baler, New Idea wheel rake, potato plow, 3 pt. seeder, 5 h.p. pump, small compressor, 2 fuel tanks/pumps, rotary cutter, 8000 tobacco lath, tobacco wagons, tobacco presses, 7' Landell chisel plow, 3 pt. bale lift, hog feeders, WIN-Par generator continued KW's, Stiehl chain saw, jacks, New Idea field chopper, various iron water troughs, hog troughs, water tank, 3 point scraper, 3 pt. post hole digger, 2 flat wagons, ropes, chains, anvil, potato plow, fence wire, electric fence posts, 1930's Ford wrenches, milk cans, chicken coops, wheelbarrow, feed cart, harness, feed supplement, barley 2 ton M/L, ear corn 12 ton M/L, one hole corn sheller, bunk feeder, pickup truck rack, pump trough, roll top desk, baskets, kitchen cabinet, chest freezer, carriage lantern, jars, misc. utensils, also numerous items of value not listed.

AUCTION FOR:

**BETTY J. EITNIER  
PAUL EITNIER- DECEASED**

E.M. Murry Associates

Auctioneers

AU-648L

Young & Young Attys.

*E.M. Murry Associates*

10 S. Broad St.  
Litz, PA 17543  
Elmer Murry 626-2636  
Richard Murry 626-8175  
Ken Miller  
Professional Auctioneers,  
Appraisers and Advisors  
Since 1953  
AU-00648-L