

**N.E. Chicken Parts**  
Sept. 12, 1990

Trucklot buying interest was mixed and selective. Supplies of skinned boneless breasts were irregular but generally cleared well at higher price levels. Whole breasts, particularly line run were a bit more available on yellow product; however, white supplies were generally no more than adequate. Leg items were at least adequate, especially leg quarters which traded in some instances as low as 32 cents. Yellow wings were in light supply and easy to place. Giblets were in demand for the religious holiday and supplies were limited.

**TODAYS NEGOTIATED SALES AS OF 11:30 A.M., PRICES PAID PER POUND ON ICE PACKED PARTS DELIVERED IN POOL TRUCKLOT AND TRUCKLOT QUANTITIES:**

**ITEM CURRENT NEGOTIATED TRADING BREASTS SKINNED BONELESS 210 RIBS ON 101-102 LINE RUN 101 LEGS 42-43 LEG QUARTERS 33-34 THIGHS 33-34 DRUMSTICKS 35 WINGS 68-69 BACKS & NECKS 10-12 LIVERS 30-35 GIZZARDS (HEARTS) 30-35**

Includes New York City Metropolitan area, Northern New Jersey, Massachusetts, Connecticut and Rhode Island.

**PRICES PAID PER POUND ON ICE PACKED PARTS DELIVERED IN POOL TRUCKLOT AND TRUCKLOT QUANTITIES: CURRENT ITEM NEGOTIATED TRADING\* WEIGHTED AVG \*\* VOLUME/LBS. BREASTS SKINNED BONELESS 210 208.35 198,000 RIB ON 101-102 106.18 313,200 LINE RUN 101 104 08 451,800 LEGS 42-43 48 68 210,600 LEG QUARTERS 33-34 35.00 376,200 THIGHS 33-34 32 67 16,200 DRUMSTICKS 35 37.00 43,200 WINGS 68-69 72 78 280,800 BACKS & NECKS 10-12 11 33 21,600 LIVERS 30-35 35.50 21,600 GIZZARDS (HEARTS) 30-35 35 30 18,000**

**\*TODAY'S NEGOTIATED SALES AS OF 11:30 A.M. \*\*WEIGHTED AVERAGE PRICE OF ALL GRADES AND BRANDS OF PRODUCT SHIPPED, OR TO BE SHIPPED FROM PROCESSORS AS OF 2:00 P.M. DAY OF REPORT (INCLUDES NEW YORK CITY METROPOLITAN AREA, NORTHERN NEW JERSEY, MASSACHUSETTS, CONNECTICUT AND RHODE ISLAND)**

**Leesport Livestock Auction**

Leesport, Pa.  
Wednesday, September 12, 1990  
Report Supplied by PDA

**CATTLE 269...PDA... Supply included 20 feeder cattle ...Compared to last Wednesday's market: Slaughter steers steady to weak; Cows grading Breaking Utility and Commercial steady to weak, Canner to Boning Utility steady to 1.00 higher. Few High Choice & Prime 1100/1640 lbs. slaughter steers 75.25-76.85, Choice 1050/1215 lbs. 72.50-75.25, Select 69.50-73.25, few Standard 60.25-66.75; Choice 1150/1450 lbs. Holsteins 66.50-70.50, one 71.25, few Select 62.50-64.25, few Standard 56.00-59.25. Few Choice 1000/1340 lbs. sl. heifers 69.25-71.50, one 73.75, one Prime 76.00, Select 66.25-69.50, few 62.25. Breaking Ut. & Commercial sl. cows 53.00-57.25, one 58.00, Cutter & Boning Utility 51.00-56.25, couple 57.00, Canner & low Cutter 47.25-51, few 45.00, Shells down to 30.00. Choice sl. bullocks 67.00-69.50; few Select & Choice Holsteins 61.75-64.00. Few Yield Grade No. 1, 1350/1765 lbs. sl. bulls 63.00-68.25, few No. 2, 900/1500 lbs. 55.00-59.50. Feeder Cattle: Few Medium Frame No. 1-2, 550/850 lbs. steers 64.50-68.50, few Large #2, 700/975 lbs. 59.00-65.00, one lot 255/290 lbs. 75.00. Few Medium Frame No. 1, 440/715 lbs. heifers 63.50-69.00, Large #2, 670/940 lbs. 58.00-69.50.**

**CALVES 219...Couple Choice 98.00&102.00, one Prime 120.00, Standard & Good 80/105 lbs. 65.00-72, few 75.00, few 65/75 lbs. 60.00-65.00, few Utility 55/85 lbs. 50.00-62.00. Farm Calves: No. 1, Holstein Bulls 90/125 lbs. 155.00-174.00, No. 2, 90/115 lbs. 80.00-155.00, few 80/90 lbs. 75.00-102.00; Holstein 95/115 lbs. heifers 167.50-222.50, few No. 2, 80/115 lbs. 95.00-145.00. Few Beef cross 80/105 lbs. bulls 120.00-162.50, few Beef cross 75/105 lbs. heifers 75.00-105.00.**

**HOGS 336...Barrows and gilts 1.50 to 2.50 higher. US No. 1-3 215/255 lbs. 53.00-54.00, few 2-3 230/250 lbs. 51.50-53.25, lot 2-4 260 lbs. 51.00, few 1-3 145/185 lbs. 40.00-50.00. Sows .50 to 1.50 lower. US No. 1-3 285/470 lbs. sows 43 75-46.00, 490/615 lbs. 45.50-47.00, Medium 300/430 lbs. 40.00-44.00. Boars**

39.50-41.75.  
**FEEDER PIGS 282...US No. 1-3 35/60 lbs. feeder pigs 79.00-95.00, few 85/135 lbs. 59.00-66.00, lot 2-3 48 lbs. 66.00, few Utility 20/40 lbs. 75.00-80.00 --- all per hundredweight.**

**SHEEP 58...Few Choice 70/90 lbs. spring slaughter lambs 60.00-64.00, few 40/45 lbs. 95.00-131.00, few Good & Choice 40/60 lbs. 70.00-85.00. Slaughter sheep 8.00-48.00, mostly 15.00-34.00 - all cwt.**

**GOATS 17...Large 44.00-62.50, one 95.00, few Medium & thin 25.00-35.00, few Large Kids 40.00-57.50 --- all per head.**

**Belknap Livestock Auction**

Dayton, Pa.  
Wednesday, September 12, 1990  
Report Supplied by PDA

**CATTLE 105...PDA...Compared with last Wednesday's market: Individual Standard slaughter steers 62.50. Few Choice 885/1020 lbs. sl. heifers 65.00-69.00, few Standard 57.25-60.00. One Breaking Utility and Commercial sl. cows 54.50, Cutter and Boning Utility 46.00-50.75, Canner and Low Cutter 40.0-46.25, Shells down to 30.00. Few Yield Grade No. 1, 1010/2115 lbs. sl. bull 62.00-65.75, few No. 2, 1320/1540 lbs. 55.00-59.75. Feeder Cattle: Few Medium Frame No. 1, 500/610 lbs.**

steers 79.00-82.25. Medium Frame #1, 315/570 lbs. heifers 65.00-76.00, Med. & Large #1, 620/880 lbs. 57.75-66.75, few Medium #2, 525/600 lbs. 57.50-63.00. Medium Frame No. 1-2, 570/715 lbs. bulls 63.00-70.00.

**CALVES 152...Couple Good vealers 79.00&84.50, Standard and Good 90/120 lbs. 74.00-79.00, 60/85 lbs. 67.00-75.00. Farm Calves: No. 1, Holstein Bulls 90/130 lbs. 100.00-140.00, 80/85 lbs. 78.00-112.50, No. 2, 95/115 lbs. 78.00-110.00; few Holstein Heifers 80/85 lbs. 100.00-148.00, few 105/140 lbs. 176.00-185.00. Beef Cross 75/135 lbs. bulls and heifers 77.00-140.00.**

**HOGS 173...US No. 1-2 235/250 lbs. barrows and gilts 53.30-54.10, couple small lots 54.40&56.00, 1-3 225/265 lbs. 52.00-53.40, 2-3 255/265 lbs. 50.60-51.00. US No. 1-3 370/660 lbs. sows 40.25-45.25. Boars 36.750-38.75.**

**FEEDER PIGS 115...US No. 1-3 20/35 lbs. feeder pigs 20.00-32.00, 35/50 lbs. 32.00-47.50, lot 60 lbs. 49.50, lot Utility 30 lbs. 13.00 --- all per head.**

**SHEEP 12...Few Choice & Prime 85/115 lbs. spring slaughter lambs 45.00-47.00. Few Slaughter sheep 10.00-21.00 --- all cwt.**

**GOATS 10...Medium 24.00-38.00, one Small 17.00 --- all per head.**

**Belleville Livestock Auction**

Belleville, Pa.  
Wednesday, September 12, 1990  
Report Supplied by PDA

**CATTLE 117...REPORT SUPPLIED BY THE AUCTION...Compared with last weeks market: Few Utility slaughter steers 56.25-68.35. Breaking Utility and Commercial slaughter cows 53.00-56.25, Cutter & Boning Utility 51.25-54.85, Canner & low Cutter 46.00-49.85, Shells down to 41.00. Yield Grade No. 1, sl. bulls 69.50-73.00.**

**CALVES 128...Standard and Good vealers 64.00-77.00, Utility 50.00-65.00. FARM CALVES: No. 1, Holstein Bulls 130.00-169.00, No. 2, 80.00-127.50.**

**HOGS 95...US No. 1-2 215/250 lbs. barrows and gilts 53.85-55.25, 1-3 200/290 lbs. 51.25-53.60. US 2-3 sows 42.00-49.00. Boars 39.00-43.00.**

**FEEDER PIGS 128...US 1-3 feeder pigs 17.00-43.00 --- all per head.**

**SHEEP 43...Choice spring slaughter lambs 42.00-55.00, Slaughter sheep 10.00-22.50 - all cwt.**

**GOATS 20...Large 26.00-80.00 --- all per head. HOLSTEIN DAIRY COWS - \$560.00-\$1510.00 - PER HEAD.**

**SAWDUST & KILN DRIED WOOD SHAVINGS**

- \* Delivered To Your Farm
- \* Excellent Dairy Bedding
- \* Economical
- \* Year Around Supply

Call For Price

*J.D. Martin inc.*

Lancaster, PA  
717-653-5935



Every Wednesday  
At 11:00 A.M.

**GOOD'S AUCTION**  
111 Maple Ave.  
Leola, PA 17540  
717-656-8911  
717-656-9554

**DAIRY SHOW AND SALE WEDNESDAY, OCTOBER 31**

**NEW HOLLAND SALES STABLES INC. THE ACTION AUCTION**

**FALL HEIFER SALE SATURDAY, SEPTEMBER 22**

LIVESTOCK IS OUR ONLY BUSINESS

**MONDAY**

**SLAUGHTER HOGS**



**EARLY BIRD HOG SALE 7:30 A.M.**

Sell Your Hogs At New Holland Sales Stables, Inc. See them weighed, sold and pickup your check.

**10:00 AM**

**HORSES MULES**



**1:30 PM**

**BEEF SALE**



**SHEEP**



**CALVES**

**WEDNESDAY**

**DAIRY 11:00 AM COW SALE 12:00 NOON COWS**



We have the usual run of 50 to 100 Heifers, all ages. Loads of fresh cows and springers from our regular shippers. Also some local fresh cows and springers.

**1:30 P.M. FEEDER PIG SALE**

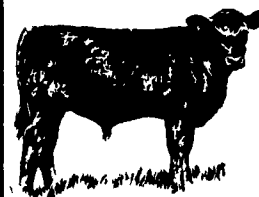


Pigs are accepted after 6:30 A.M. State graded from 8 to 12 Dairy Barn and Feeder Pig Barn are cleaned and disinfected weekly for your protection.

**THURSDAY**

**Beef Auction 10:00 A.M.**

**BULLS STEERS BEEF COWS**



**STOCKERS & FEEDERS**

**1:30 P.M.**

**GOATS CALVES**



**NEW HOLLAND SALES STABLES, INC.**

12 Miles East of Lancaster Off Route 23, New Holland, Penna.

**MANAGERS**

Norman & David Kolb - 717-397-5538

**Field Representatives**

Luke Eberly - 215-267-6608 738-1865

Homer Eberly - 215-267-3047

**Sale Barn Officer Manager**  
Roger Floyd - 717-354-4341

**Order Buyer**

Paul Good - 215-445-6662

**Feeder Pig Representative**

Mel Hoover - 717-354-8397