

1951 Spartan Royal Mansion 32'x8' aluminum trailer. Seldom used, always garaged, excellent condition, birch cabinets and interior, gas stove, electric refrig., kerosene heater, sleeps six.

Phone
717/386-3554

1970 Ford Lewisville
36,000 GVW, 70,000
Miles, 16' Grain Body,
Like New.

\$15,000
(215) 255-5410

GMC BRIGADERE
33,500 GVW, 16' Eby
aluminum dump body.
6V 53 Detroit diesel,
radial tires.

\$10,500
215/383-6818

**CHEVY
MOTORS**
New & Rebuilt
350, 366,
427, 454
Will install
Roll Back Service
(at cost)
717-762-6415

1974 Mack
R Model, single axle, fully equipped and in
extra nice condition. 237 Maxidyne with 5
spd.
1982 45' Landoll
Haul All Machinery Trailer. All hyd. with
winch.
717/265-9014



Hostetler Truck Bodies & Trailers

Rt. 322 Milroy, PA 17063 800-441-5161

towing systems



**CLASS III
HITCHES**

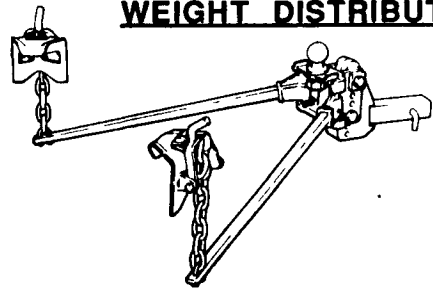


**HUSKY
HITCHES**
**CLASS III
HITCHES**

Fits Most Full Size Chevy, Ford, & Dodge Pick Ups
#34, 36, 38 \$\$\$ 84.95
'88-'89 Chevy 1-Ton Dually's and '89 Chevy 3/4-Ton
w/ H D Suspension \$117.95

SPECIALTY APPLICATIONS:
Automobiles, Vans, & Mini Trucks
\$\$\$ 127.95

WEIGHT DISTRIBUTING HITCHES



1000 LBS.
Welded...
\$132.00
1000 LBS.
Adjust...
\$179.00



**OPTIONAL PLATE W/ASSY.
\$220**



**BALL MOUNTS
WITH PIN & CLIP**
#33 #1 \$15.50
#44 #2 \$16.50
#55 #3 \$23.95

C1	1- 7/8 x 3/4	\$8.00
C2	2 x 3/4	\$8.00
C3	1- 7/8 x 1	\$8.00
C4	2 x 1	\$8.00
C5	2- 5/16 x 1	\$9.00

Other
Sizes
Available

EBY **ALUMINUM
GRAIN BODY**

**CONSTRUCTED FOR YEARS OF
MAINTENANCE-FREE SERVICE.**

Look over these outstanding features.

- **Less weight.** Eby aluminum bodies weigh up to 30% less than comparable steel and wood construction.
- **Less maintenance.** Aluminum construction won't rust or rot - never needs painting.
- **Long-life durability.** Heavy-duty structural components and hollow-tube frame combine with aluminum floor and sides to stand up to years of hard work.

For more information or prices, call us in Blue Ball, PA at
(717) 354-4971
M.H. EBY, INC.
P O Box 127 Blue Ball, PA 17506
(717) 354-4971

Mark VII - Pickups - Broncos - Bronco II - Stake Body - Crew Cab -

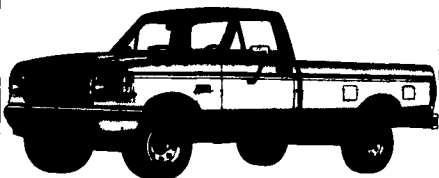
For All Your Farming And Recreational Transportation Needs!

BRONCOS DIESEL PICKUPS CHASSIS CAB CARGO VANS 4x4 RANGERS PICKUPS
BRONCO II SUPER CAB CREW CAB STAKE BODY BOX VANS XLT CUSTOM VANS



**'90 RANGER
XLT 4x2**
Two-Tone, Man. Trans., 17 To
Choose From
NOW ONLY \$8,499*

'90 FORD F-150 4x2
XLT, 503 Pkg, AT, AC
\$11,999*



6 To Choose From!



**WORK TRUCKS IN
STOCK TO SUIT
EVERY NEED!**

**5 NEW
CENTURION
CREW CABS
TO CHOOSE FROM!**



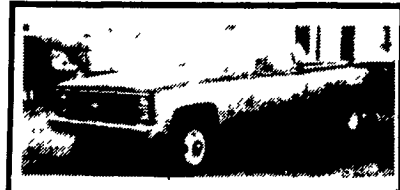
**'88 F-350
CREWCAB DUALY**
460, V-8, 5 Spd., PS, PB, AC, Dual
Tanks, AM/FM, Two-Tone, Tilt,
Cruise, Like New In And Out
DON'T MISS THIS ONE!



**'89 FORD F-250
SUPERCAB XLT**
460 V8, AT, PS, PB, AC, AM/FM,
Tilt, Cruise, Excellent Condition
**STOP BY AND DRIVE
THIS ONE!**



'88 F-250 4x4
460 V-8, AT, PS, PB, AM/FM,
Dual Tanks, Over 8600 GVW
**READY FOR YOUR
TOUGH JOBS!**



**'89 CHEVY
CREW CAB**
454 V8, AT, PS, PB, AC,
AM/FM, Only 11,00 Miles
SEE IT TODAY!

* Price Includes
Applicable Rebates

Unless This Emblem Is On Your Car Or Truck You Probably Paid Too Much

SHEEHY LEBANON

9-9 Daily
9-5 Sat.
717-272-7671

Parts Dept. Open
Daily 8-5
Sat. 8-12
717-273-8168

SHEEHY FORD LINCOLN MERCURY INC.

20th & Cumberland St., Lebanon



Tempo - Cougar - Continental - Town Car - 4x4 - Box Van - Rangers -

Custom Vans

XLT

Grand Marquis

Marquis

Linn

Topaz

Diesel Pickups

Mustang

T Bird