

35 TRUCKS & TRAILERS

GMC crewcab one ton dually New 454 motor, 1980 no rust \$5,000 814-364-9912

FOR SALE 1969 4x4 K5 Chevy Blazer, PS, PB, AT Meyers snow plow Body excellent condition, mechanical excellent condition Garage kept No rust Absolute Excellent Condition Lanc Co 215-484-4581.

ROLLBACK 75 International, 2070 rollback, 290 Cummins, 13 speed, 44,000 Rockwells, 26' Danco construction bed, 10 ton wench, good condition, \$17,500. (717)399-9974 ask for Chuck

Royal Automotive TRUCK SALES & LEASING

Coopersburg, Pa. Rt. 309 Just Off I-78, Between Allentown & Quakertown

215-282-4090



1980 CHEVY H.D. 12' Gruman Alum Step Van, Service Tk., 350 V8, 4 Spd. Trans, 12,000 GVW, 45,000 Orig. Miles, PS, PB, Built In Kohler 7.5 KW Generator 120/240 Volts, Air Comp, Lights And More, Sale Or Lease



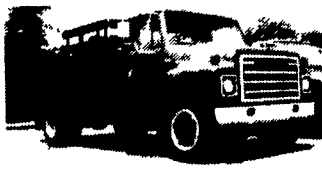
88 PETERBILT 13-210 With A 22' Del. Delta Ref. Body With Stand-By Cummins, 210 HP Eng, Fuller Trans. And Much More Available For Sale Or Lease



RARE - 1984 CHEVY Gruman Alum Tk & 25' Det. Gooseneck Trailer, 350 V8, AT, PS, 35,000 Orig. Miles, Full Swing Doors & Side Door & Lots More, Call For Details Avail For Sale Or Lease



81 GMC 3500 1 Ton Fully Inclosed Red Utility Tk 350 V8-4 Sp Trans - PS Only 34,000 Orig Miles, Exc. Cond Available For Sale Or Lease Royal Truck Sales & Leasing, 215-282-4090



79 INT. 14' Stake Body With Sides, 4 Sp. Trans, V8, 49,000 Orig. Miles, 20,000 GVW, Ready To Go To Work \$3,950



84 FORD LN8000 24' Stake Body w/Tuck Away Lift Gate, 3208 CAT Del., 5 Spd/2 Spd Rear, 28,000 GVW, Fleet Maintained In Brand New Condition For Sale or Lease At \$976 00 Down, 46 Months @ \$488 00.

TWO ACRES OF ALL TYPES USED TRUCKS. "IF WE DON'T HAVE IT, WE'LL GET IT"

18 CHEVY MEDIUM DUTY'S IN STOCK



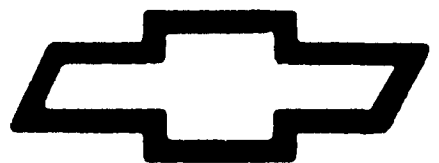
18,000# TO 54,000# GVW's!!

- Dumps
- Stakes
- Vans
- Grain

We Also Have Used Medium Duty's In Stock!

LEFEVER BROS. DILLSBURG

CALL (717) 432-9611



Quality Dealer Since 1921
406 U.S. Route 15 • Dillsburg, PA 17019

HAMILTON GMC TRUCK



"A COMMITMENT TO EXCELLENCE"

Something A Little Different

Sales • Service • Parts (717) 665-2271

E. High St., 55 Doe Run Rd., Manheim, Pa. 17545



Lancaster County's ONLY Certified GM Medium Duty Dealer!

GMC NEW & USED LIGHT & MED. DUTY TRUCKS

It's Worth The Trip To Hamilton GMC!

CARGO VANS
4.3 Auto, #176 \$12,999

V8 AUTO.
Stock #9535 \$15,499

MEDIUM DUTY
C5
C6
C7
IN STOCK-READY FOR DELIVERY

V8 AUTO
w/Stake Bed
Stock #191 \$13,925

454 Auto A/C
Stock #193 \$17,999



86 GMC 1500, 4x4, Sierra Classic, V8, Auto, Air, Tilt, Cruise, PW, PL, Dual Tanks, #246A, Was \$9,995 Now \$9,495



83 Ford Bronco XLT, 4x4, 302 V8, Auto, Air, AM-FM, PS, PB, #1028A, Was \$9,995 Now \$9,495



88 Chevy R30 Dump, 350 V8, 4 Speed, Radio, Like New, #5082, Was \$15,995 Now \$15,495



75 Int. Travelall, V8, Auto, AM-FM, PS, PB, Air, Tilt, Cruise, 82,000 Miles, Very Nice, #9674A, Was \$3,495 Now \$2,995



New 89 S15 Pickup, 4x4, PS, PB, Air, AM-FM Cass., Sliding Rear Window, Sierra Classic, 5 Speed, Long Bed, #9411, Was \$14,750 Now \$10,990



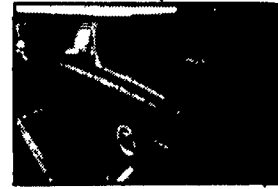
88 Chevy S10 Blazer, 4.3 V6, Auto, Sport Pkg, AM-FM Cass, PW, PL, Tilt, Cruise, #1018A, Was \$13,995 Now \$12,995



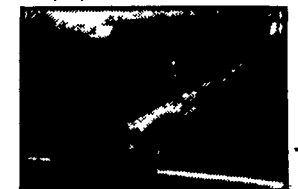
87 GMC Sierra 2500 3/4 Ton, V8, AT, PS, PB, AM-FM, 31,000 Miles #5058, Was \$10,995 Now \$10,495



85 Chevy K10, 4x4, Sierra, V8, AM-FM Cassette, PS, PB, #9441A, Was \$9,495 Now \$8,995



87 3/4 Ton High Sierra, 350 V8, Auto, 8600 GVW, PS, PB, #7107, Was \$9,995 Now \$9,495



86 Ford Ranger 2.9 V6, 5 Speed, AM-FM PS, PB, AC, Tilt #165A, Was \$6,995 Now \$5,995



87 Step Vans - Low Miles!, 4 Cyl Cummins, As Low As \$12,500



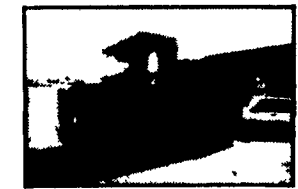
82-86 GMC C-70's, 366 & 5 Speeds 18 to 24' Bodies, As Low As \$5,995



72 F600, 174" WB, 19,200 GVW, 4 Speed, 2 Speed Rear, 12 Ft. Grain Body Dump, #6219A, Was \$4,495 Now \$3,995



88 Ford 4x4 F150 Super Cab, 351 V8, Auto, Air, PW, PL, Tilt, Cruise, Loaded, 30,000 Miles, #219A, Was \$14,995 Now \$14,495



78 Ford LN-8000 Dump, 3208 Cat, 31,000 GVW, #6122, Was \$21,900 Now \$18,999