

Kutztown Market Swine

(Continued from Page A34)
16 AND 17

1 Mark Lazarus, 2 Brian Lazarus, 3 Wendy Lazarus
GRAND CHAMPION SHOWMAN
Mark Lazarus
RESERVE
Steve Wessner
9 AND UNDER
1 Brian Eshbach, 2 Jeremy Wisser, 3 Julie Hess
10 AND 11
1 Calvin Lazarus, 2 Amy Wehr, 3 Bryan Cooper
12 AND 13
1 Lynn Lazarus, 2 Laura Lazarus 3 Grant Lazarus
14
1 Steven Wessner, 2 Richard Kerper, 3 Jason Keller
15
1 Ben Lazarus, 2 Bruce Snyder, 3 Sherry Lazarus
16 AND 17
1 Mark Lazarus, 2 Wendy Lazarus, 3 Brian Lazarus

MARKET SWINE
GRAND CHAMPION
Amy Wehr
RESERVE CHAMPION
Brian Eshbach
LIGHTWEIGHT CHAMPION
Chris Blatt
RESERVE
Mark Gelsinger
MIDDLEWEIGHT CHAMPION
Brian Eshbach
RESERVE
Todd Rabenold
HEAVYWEIGHT CHAMPION
Amy Wehr
RESERVE
Elizabeth Wisser
123-137 Lbs.
1 Brian Gougler, 2 Valerie Hunter, 3

Christine Hunter
140 - 156 Lbs.
1 Mark Gelsinger, 2 Randy Balthaser, 3 Mark Gelsinger
158-173 Lbs.
1 and 2 Chris Blatt, 3 Jason Balthaser
176-189 Lbs.
1 Brian Lazarus, 2 Eric Keller, 3 Wendy Lazarus
190-199 Lbs.
1 Brian Eshbach, 2 Todd Rabenold, 3 Brian Lazarus
200-215 Lbs.
1 Laura Lazarus, 2 Wendy Lazarus, 3 Lynn Lazarus
215-234 Lbs.
1 Brian Eshbach, 2 Sherry Lazarus, 3 Jason Balthaser
237-248 Lbs.
1 Tim Eschbach, 2 April Lazarus, 3 Bryan Cooper
252-301 Lbs.
1 Amy Wehr, 2 Elizabeth Wisser 3 Amy Wehr

BREEDING SWINE
CHAMPION BERKSHIRE
Daniel Hartman
RESERVE
Cheryl Bennecoff
CHESTER WHITES
CHAMPION
Daniel Hartman
RESERVE
Daniel Hartman
CHAMPION HAMPSHIRE
Jennifer Rabenold
RESERVE
Todd Rabenold
CHAMPION POLLAND CHINA
Cheryl Bennecoff
RESERVE
Cheryl Bennecoff
CHAMPION DUROC
Daniel Hartman

Public Auction Register

Closing Date Monday 5:00 P.M.
of each week's publication

Hunting and Fishing, owner, Wm. F. Comly & Son, Auctions

THURS. SEPT. 13 - 4.30PM, Wholesaler's Clearance, Lawn & Garden Supplies, Pesticides, Herbicides & Tools, at Pen Embryo Warehouse, corner of 322 and Reidenbach Rd., New Holland, PA, New Holland Supply Co., owner, Miller and Siegrist, Auctions.

FRI. SEPT. 14 - 11AM Sharp, Short Notice Indiana Co. Dairy Herd Dispersal, located at Kish Valley Dairy Sales on the corner of S Walnut St. and the Front Mtn. Rd., Belleville, PA, Sherman Glick, owner, Bryan D. Imes, Auct

SEPTEMBER

TUES. SEPT 11 - 9AM, Antiques, Collectibles, Lots of Glassware, Old Chests, Furniture, HH Goods, located St Peter's UCC Church, Knauertown, Elaine Rittenbaugh, Auct
TUES SEPT 11 - 10AM, 65 Fur Coats & Jackets, Jeans, etc., located 1825 E. Boston Ave, Phila, PA, Wm F Comly & Son, Auctions.
TUES SEPT. 11 - 12Noon, 102 Cattle, at Whitney

Point Sale Barn, Whitney Point, NY, Ed and Loise Henderson, owners, Charlie Manasse, Auct

TUES SEPT. 11 - 5PM, Antique Radios & Accessories, Rare Hors-drawn Sleigh, Furniture & Oriental Rugs, located Mt. Bethel Fire Hall, Mt. Bethel, PA, Robert C. Teel, Auct.

WED SEPT. 12 - 10AM, Bankruptcy Auction of Hunting, Fishing, Archery Equip, Supplies & Fixtures, located 16 W. Rt. 70, Marlton, NJ, Stratton's

Ed Henderson Auction

• 102 CATTLE •

MAIN BARN LOST BY FIRE

Whitney Point Sale Barn, Exit 8, I-81, Rt. 22,
Whitney Point, NY.

Tuesday, September 11 • 12 Noon

DHI- Over 16,000 lb. Herd Ave.

50 Head due Sept.-Dec. About 40 - 1st & 2nd calf, Beautiful Uddered, Top Dairy Animals.

Individuals milking to 90 lbs. a day. 14 NICE BRED HFRS. TB and Blood Tested, Preg. Checks, cows were in tie stalls, milked in parlor. 1 Big, tall "Super Nice" Red Factor Cow. Many fresh June, July.

Machinery from a neighbor: Farmall H, Farmall SM, Ford 530 Baler, 2 wagons, Pony Sulky cart, hay elevator.

Food - Donna and Bert
Info: Ron Vandeburg

Owner:

Ed & Louise Henderson
607/692-3009

Auctioneer:
Charlie Manasse
607/692-3516

"CHARLIE SEZ"

"The fire was rosey red and Ed and Louise are blue. They didn't want to sell their cows but decided to. The bunk feeder and silos are fine, so by keeping the open heifers, they'll have another herd in due time.

Buildings and machines we can replace, but no one was hurt thanks to the Lord's Grace."

"See Ya" Tuesday Noon, September 11 at the W.P. Sale Barn.

RESERVE
Daniel Hartman
CHAMPION LANDRACE
Steven Wisser
RESERVE
Steven Wisser

OUTSTANDING PUBLIC SALE
80 YEAR COLLECTION OF FINE ANTIQUES - HISTORY BOOKS - YORK CO. & FAMILIES- MUSICAL INSTRUMENTS-EDISON VICTROLAS - CYLINDERS - RECORDS - RADIOS - FURNITURE - QUILTS - AGATEWARE - TINWARE POSTCARDS - TOYS - ETC.

SATURDAY, SEPTEMBER 29, 1990
At 8:00 A.M.

Location: Take Route #74 3-miles north of York to Davidsburg Road (Brooks Drugstore) thence west 8/10-mile to Admire Road, then south-west 2-miles to sale.

OR
Take Route #234 2 miles east of East Berlin to Admire Road, there turning Northeast 5-miles to sale in York County, Pa.

(Sale Signs Posted)
HARRY L. WEHLER
Owner

3655 Admire Rd.
Dover, PA 17315

Clair R Slaybaugh, Auctioneer
PA Lic. 859L



PUBLIC AUCTION

SAT., SEPT. 15, 1990

AT 9:00 A.M.

LOC.: Along River Hill Rd., Conestoga Twp., Lancaster Co., PA. (Dir.: From Main Street, Conestoga (at Post office) South on River Corner Rd. Left on River Rd. Right on River Hill Rd. to 1st farm right.)

APPLIANCES. GIRARD PIANO.
FURNITURE: Depress. style: 4 pc & 5 pc bdrm sets, 9 pc din set, 4 pc Waterfall set Oak: Fine ice box w/orig hdw., (3) high chests, high back dbl bed, S roll only, Singer treadle sew mach, clothes trees (as is), sev. pr back & misc. plank chrs, etc. (2) Empire chests, fine set 8 decor lyre back plank chrs., (2) dovetailed & grned blanket chests, grned. flour chest, jelly cupbd. & Victrola (as is), pie crust library, end & gateleg tble, dbl. lid wood box, (2) rope beds, early wood bench, single Victorian style bed, iron & wood cribs, bunk bed, 3 pc. uph. lv. set, fine gold uph. power lift chair, love seat, gooseneck rocker, fold. & lawn chrs, misc picture frames, table & floor lamps, iron floor lamp, etc

COLLECTIBLES: Brass ice crm. scoop, wicker ferneries & coach, Wood: Fine dbl. "W" butter mold, dry rack, cheese box, long handle bread tools, apple butter stirrers, canes, nice sm. & lg egg crates. Glass butter churn, Stoneware, Cowden and lot other puddin & pickle crocks. Fine lg. copper kettle. Iron: Fine Enterprise sausage stuffer, early meat slicer & food chopper, butter scales w/wghts, sev. sad irons, #12 Erie fry pan, wrought fork, sev. egg baskets, boot jack, ice tongs, hog & pump troughs, Home Town ice crms. Tin: Cookie cutters, puddin pans, gardner's tongs. 1837 "Lampeter Square" coverlet (in pcs), sev. new & early hand quilts, 1908 beaded pin cushion, Dietz, Aladdin & B&H kero lanterns, gold nm granny glasses, razor strap, lot 78 records, Firestone rubber ash tray, early wringer, Tonka toys, Lincoln logs, stuffed animals, Chain globe, sled.

GUNS, WATCHES, etc., GLASSWARE, HOUSEHOLD GOODS, LOTS OF SILVERWARE, etc.

FARM ITEMS & TOOLS: Fine Fuller & Johnson 2 H.P. Hit & Miss engine, (2) Lawn Boy and (1) Snapper 21" push mowers, Echo weed eater, 1933 Chevy wheels, grindstone, bench vise, 4309 Bulldozer fencer, battery charger, Home-light 16" chain saw, alum. stepladder, bag wagon, lot 11"x22" slates, sm. air compr., ext. cords, square, set end wrenches, wedges, log chains, plumb. axe, hand saws, crowbars, pitch forks, shovels, brooms, rakes, hoes, dig. iron, other hand tools, misc. wood doors, lot berry & bushel boxes & crates, lot chunk wood, etc.

Partial listing. Food served. No out of state checks. Not responsible for accidents day of auction.

SALE BY
MRS. CLARENCE (ELIZABETH) WARFEL
ROY C. PROBST, AU000730L
& **ERIC R. PROBST,**
Auctioneers, 464-3190 - 464-3700

Shipley

DUROCS & LARGE WHITES

FALL BRED GILT & PRODUCTION SALE

NEWARK, OHIO

Sat., September 22, 1990

7:00 P.M.

At the Farm

Pig Roast Supper Served at 5:30 P.M.

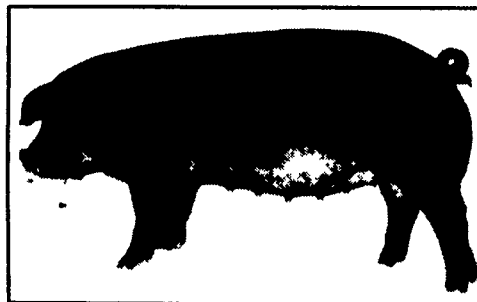
Sale Phones: (614) 745-2328 or 745-2911

If you cannot attend the sale we offer a Free Buying and Delivery Service.
Your Satisfaction Guaranteed!



125 BRED GILTS SELL!

40 Duroc Bred Gilts
bred Duroc, due Oct.-Nov.
50 Large White Bred Gilts
bred Large White, due Oct.-Nov.
10 Hamp Bred Gilts
bred Swedish Hamp or Swedish LW
10 Swedish Hamp Bred Gilts
bred Hamp or Swedish LW,
due Oct.-Nov.
25 Cross Bred Gilts
bred Swedish Hamp or Swedish LW
25 Duroc Tested Boars
25 LW Tested Boars
25 LW Open Gilts
50 Duroc Open Gilts



GUARANTEE: All white bred gilts are guaranteed to farrow at least 8 pigs. Duroc gilts guaranteed to farrow at least 6 pigs.

MR. COMMERCIAL MAN: Bred gilts are normally a cheap way to buy boars and gilts for the future.

We will be offering an excellent set of Duroc and LW tested boars in this sale.

DIRECTIONS: From Columbus- SR 62 NE to Johnstown, continue past Johnstown on 62 approx. 8 mi. to SR 657, turn right. Sale barn is 4 mi. on the left. From Mt. Vernon- 661 South approx 10 mi., cross SR 62, go approx. 3 mi. more, turn left on 657. Sale barn is 2 mi. on left. From Newark- SR 13 North approx 3 mi. to SR 657, turn left, go approx. 6 mi. Sale barn is on right

SPECIAL ATTRACTIONS

• **LARGE WHITES** Many of the LW bred gilts are bred to the Swedish Large White boars we imported from Sweden. These boars are big, long, lean, and heavy-muscled (18 high quality nipples.) The Swedish Large White boar's dam averaged 12.2 weaned in 11 litters, the Swedish Large White boar's granddam averaged 13.2 weaned in 17 litters.

• **DUROCS.** Many of the Duroc bred gilts are bred to (RALLEY), the super heavy-muscled, super lean Duroc board of the 1990's. BF's on entire litter were 6 and below, (Revival 27-1), the breeding boar of the 1990 World Pork Expo, (7.69 LEA); (EXPRESS II), 141 days to 230, 61 BF, 6 61 LEA, 14 high quality nipples. Big, lean, super productivity, heavy-muscled.

S-I-D-N-E-Y - R-A-N-D-Y

SHIPLEY

LARGE WHITES • DUROCS
8086 Marion Rd. • Newark • Ohio • 43055
614-745-2328 • 614-745-2911

For more information or a fact-filled catalog write or call collect.