

S.W. Virginia Livestock
Wytheville, VA
August 21, 1990

SLAUGHTER HOGS 27 HEAD - NO TRENDS REPORTED. BARROWS AND GILTS US 1-3, 200-250 LB. 53.00 US 1-3, 180-200 LB. 47.00 SOWS US 1-3, 500 LBS. & OVER 42.50 BOARS 300-600 LB. 40.50
SLAUGHTER CATTLE 91 HEAD - NO TRENDS REPORTED
SLAUGHTER COWS 80 HEAD CUTTER & BONING UT 1-3 48.00 - 56.00 BREAKING UT. & COMM. 2-4 47.00 - 54.00 CANNER AND LOW CUTTER 1-2 42.00 - 48.00
SLAUGHTER BULLS 11 HEAD Y.G. 1-2, 900-1300 LB. 62.00 - 64.00 Y.G. 1 2, 1300-1600 LB. 64.00 Y.G. 1-2, 1600 LBS. & OVER 65.00 - 70.50
LAMBS TOTAL RECEIPTS 241 HEAD - NO TRENDS REPORTED. SLAUGHTER LAMBS 168 HEAD SPRING CHOICE AND PRIME, 95-125 LB. 47.00 CHOICE, 85-125 LB. 44.00 WOOLED GOOD AND LOW CHOICE, 75-90 LB. 46.00 FEEDER LAMBS 11 HEAD CHOICE AND FANCY, 60-70 LB. 45.50 EWES & RAMS 62 HEAD EWES ALL GRADES 14.00 - 20.00 RAMS ALL GRADES 23.00 4 GOATS \$24.00-57.00 PER HEAD

FEEDER CATTLE 416 HEAD - NO TRENDS REPORTED. STEERS MEDIUM 1 LARGE 1 SMALL 1 MED & LARGE 2 300-400 97.00-105.00 98.00-108.00 - 86.00- 96.00 400-500 95.00-101.00 96.00-102.00 81.00- 86.00 86.00- 94.00 500-600 88.00- 95.00 90.00- 96.50 82.00- 85.00 79.00- 84.00 600-700 83.00- 92.00 90.00- 94.50 78.00- 84.00 79.00- 85.00 700-800 79.00- 82.00 - - 75.00- 80.00 800-900 74.00- 80.00 - - - HOLSTEIN STEER MED & LARGE 2 300- 500 80.00- 94.50 500- 700 75.00- 80.00 700- 900 64.00- 70.00 900-1100 64.00 1100 & OVER 55.00
HEIFERS MEDIUM 1 LARGE 1 SMALL 1 MED & LARGE 2 300-400 85.00- 89.00 90.00- 92.00 80.00 81.00- 84.00 400-500 80.00- 84.50 81.00- 84.00 74.00 75.00- 81.00 500-600 75.00- 81.00 78.00- 81.00 - 74.00- 77.00 600-700 74.00- 82.00 76.00- 83.00 - 75.00 700-800 72.00- 78.00 - - - BULLS MEDIUM 1 300-400 85.00- 90.00 400-500 80.00- 85.00 500-600 77.00- 83.00 600-700 74.00- 84.00 COWS WITH CALVES AT SIDE 5 PAIR; M-1&2, 6-9 YR OLD 800-1050 LBS WITH CALVES 125-300 LBS \$590.00-730.00 PER PAIR. BABY CALVES RETURNED TO FARMS 45 HEAD NEWBORN TO 4 WK OLD \$65.00-150.00 MOSTLY \$80.00-110.00 PER HEAD.

Four States Livestock

Hagerstown, Md.
Wednesday, Aug. 22, 1990
Report supplied by Auction

SLAUGHTER COWS: UTILITY 52.00-57.00; HIGH DRESSING 57.00-59.00, CANNERS 48.00-53.00; SHELLY 48.00 DOWN.
BULLS: YG#1 2060 LBS. AT 68.00; YG#2 1500 LBS. AT 61.50.
FED STEERS: HIGH CHOICE TO PRIME 1150-1550 LBS. 75.00-77.25; CHOICE 72.00-75.00.
FED HEIFERS: LOW CHOICE HOLSTEINS 62.00-63.00.
VEAL CALVES: CHOICE 150-250 LBS. 95.00-110.00; GOOD 80.00-95.00; CULLS 85-120 LBS. 65.00-75.00; 50-80 LBS. 63.00-70.00; WEAK AND ROUGH 63.00 DOWN.
FARM CALVES, HOLSTEIN BULLS: #1 90-120 LBS. 145.00-170.00; #2 85-110 LBS. 90.00-140.00.
HOLSTEIN HEIFERS: 90-120 LBS. 180.00-240.00; 75-90 LBS. 140.00-160.00; BEEF X BULLS UP TO 145.00.
BUTCHER HOGS: #2 AND 3 215-260 LBS. UP TO 54.25.
SOWS: #1 AND 3 300-500 LBS. 48.00-50.25; 500-600 LBS. 48.00-51.25.
BOARS: UP TO 44.75.
STOCK CATTLE, STEERS: 300-400 LBS. 85.00-94.00; 500-700 LBS. 80.00-90.00; 700-900 LBS. 70.00-75.00;

900-1050 LBS. 68.00-72.00; HOLSTEINS 450 LBS. AT 77.00.
HEIFERS: 300-500 LBS. 78.00-91.00; 500-700 LBS. 73.00-83.00.
HOLSTEINS: 200-400 LBS. 100.00-117.00; 400-700 LBS. 75.00-90.00.
BULLS: 300-500 LBS. 90.00-101.00; PUREBRED ANGUS 1050 LBS. AT 74.00, PUREBRED HOLSTEIN 1215 LBS. AT 67.50.
DAIRY REPLACEMENTS: SPRINGERS, 800.00-950.00; FRESH UP TO 910.00; JERSEYS UP TO 560.00; REGISTERED BULL AT 910.00.
LAMBS: CHOICE 95-115 LBS. 53.00-54.50; FEEDERS 45.00-48.00.
GOATS: MEDIUM UP TO 43.00; SMALL UP TO 20.00.
PIGS AND SHOATS: BY THE HEAD, 15-30 LBS. 21.00-34.00; 30-50 LBS. 30.00-46.50; 1 LOT 70 LBS. AT 51.00; BY THE POUND, 100-150 LBS. 55.00-59.00; 160-190 LBS. 50.00-54.00.
STOCK BOARS: 200-260 LBS. UP TO 48.50.

Frederick Livestock Auction

Frederick, Md.
Monday, Aug. 20, 1990
Report Supplied by Auction
SLAUGHTER COWS: UTILITY 51.00-56.25; HIGH DRESSING INDIVIDUAL AT 61.75; CANNERS 48.00-52.00; SHELLY 48.00 DOWN.
BULLS: YG#2 1600 LBS. 61.75-63.75.
FED STEERS: LOW CHOICE 1230 LBS. 70.50; SELECT 1050-1200 LBS. 63.00-69.00.
FED HEIFERS: 1 SELECT 990 LBS. AT 64.50.
VEAL CALVES: CHOICE, NONE; GOOD 150-300 LBS. 85.00-92.00; CULLS 85-120 LBS. 68.00-75.00; 50-80 LBS. 64.00-70.00; WEAK/ROUGH/THIN 63.00 DOWN.

FARM CALVES: HOLSTEIN BULLS, #1 90-120 LBS. 145.00-167.00; #2 85-110 LBS. 90.00-140.00.
HOLSTEIN HEIFERS: 80-90 LBS. 100.00-150.00; 90-125 LBS. 160.00-200.00; BEEF X BULLS TO 155.00; HEIFERS TO 137.00.
BUTCHER HOGS: US#1-3 220-260 LBS. TO 57.00; 200-220 LBS. TO 55.50; 300-400 LBS. 45.00-50.00.
SOWS: 300-500 LBS. 48.00-50.00; 500-700 LBS. 50.00-51.25; #2 AND 3, ALL WEIGHTS, 44.00-47.00.
STOCK CATTLE, STEERS: FEW OFFERED.
HEIFERS: 350 LBS TO 77.50; 700-900 LBS. 66.00-72.00.
BULLS: FEW 180-250 LBS. 85.00-91.00; 350 LBS. TO 96.00; PUREBRED HOLSTEIN 1060 LBS. AT 69.00; DAIRY REPLACEMENTS, SPRINGERS, SMALL 625.00-810.00; FRESH COWS 850.00.
LAMBS: CHOICE 95-115 LBS. 51.00-55.00; 1 130 LB. AT 47.50.
SHEEP: 19.00-23.00.
GOATS: LARGE 85.00-87.00; MEDIUM 44.00-57.00; FLESHY KIDS TO 40.00.
PIGS AND SHOATS, BY THE HEAD: 35-45 LBS. 29.00-35.00; 50-65 LBS. 39.00-46.00; 2 HEAD, 100 LBS. 59.00. BY THE POUND, 125-165 LBS. 54.00-56.00; 185 LBS. AT 52.00.
BOARS: 285 LBS. AT 47.50.

Peoria Sheep

Peoria, IL
August 21, 1990
SHEEP: 100 TRADING MODERATE. COMPARED WITH LAST TUESDAY SLAUGHTER LAMBS WEAK TO 1.00 LOWER
SLAUGHTER LAMBS: CHOICE AND PRIME 110-125 LBS. 47.00-49.00, 90-110 LBS. 45.00-47.00

STORAGE BARNS & GAZEBOS
Custom Made To Order



If You're Looking For Quality At A Good Price, Contact
B & B STRUCTURES

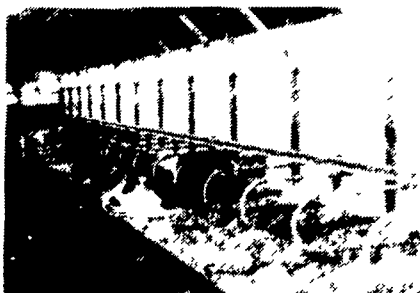
DELIVERY AVAILABLE

Henry K. Blank
RD 1, Bird-In-Hand, PA 17505
(717) 656-0783
Dealer Inquiries Invited



LOOP STALLS

All Loop Stalls Are Coated With Baked On Thermoset Epoxy Powder Coating After Fabrication



- Super Tough Finish
- Protection From Rust & Corrosion
- Superior Electrical Insulation
- Chip Resistant
- Resists Acid & Chemicals
- Smoother Finish Stays Cleaner

Zimmerman Loop Stalls Are Constructed of:

- 2 3/8" Outside Diameter High Yield Steel Tubing With A 12 Gal. (.108) Wall
- Spray Arc Transfer Method Used On Welds

PAUL B. ZIMMERMAN, INC.

Hardware • Farm Supplies
Custom Manufacturing
Crane Service

295 Woodcorner Rd.
Lititz, PA 17543
1 Mile West of Ephrata

Phone:
717-738-1121

KEYSTONE MILLS

"MAXI-SIL"

*Proven By Research
And Local Farm
Results
To Provide:*

- Faster fermentation...Promotes rapid drop in pH, which causes natural lactic acid producing organisms to grow at a higher rate.
- Less spoilage... Silage on exposed face of trench or pit silos remains palatable over a longer period of time.
- Flexible... Can be used in trench, pit, bag, or upright silos and with any forage crops used for silage.
- Cost Efficient... 1 lb. of free-flowing Purina Maxi-Sil will treat a ton of silage.
- Non-corrosive... Will not damage equipment.
- Longer lasting... No refrigeration required and can be stored in any type facility.

KEYSTONE MILLS
—Serving Agriculture—Since 1894—

R.D. 3
Ephrata, PA 17522
(717) 354-4616

1975 Route 336
Romulus, NY 14541
(315) 549-2578

Quality Products...Quality Service

* Trademark Ralston Purina Company