

Philadelphia Fruit Market

Philadelphia, Pa.

Wednesday, August 15, 1990

GRAPEFRUIT STEADY CA ctn Red 23-27s 11.00-12.50 32s 12.00-13.00 mos 12.50 36s 11.50-13.00 mos 12.00 40s 11.50 48s 11.00 56s 9.00-10.00 fair qual 36-48s 9.00-10.00.

LEMONS ABOUT STEADY CA ctn 140s 26.00 165s 22.00-23.50 200s 17.50-18.00 fair qual 95-115s 20.00 140s 14.00-15.00 165s 13.00-14.00 200s 12.00 ord qual 95s 15.00 115s 16.00 140s 13.50 165s 12.50 200s 11.50 FL 4/5 buctn 95-115s 16.00 140s 15.00 BAHAMAS 4/5 buctn fair qual 95-140s 10.00-12.00 165s 10.00-13.00 200-235s 9.00.

LIMES ABOUT STEADY 10-lb ctn Persian Seedless Type FL 48-63s 5.00-6.00 few 6.50.

ORANGES ABOUT STEADY CA ctn Valencia 56s 16.00-17.50 some 14.00 72s 13.00-14.00 mos 14.00 one label 15.50 88s 11.50-13.50 mos 12.00 113s 10.00-11.50 138s 9.00-10.50 fair qual 56s 11.00-12.00 72-88s 12.00 113s 10.50-11.00 138s 9.50. TANGELOS NO SUPPLIES.

APPLES ABOUT STEADY CONTROLLED ATMOSPHERE STORAGE ctn tray pack WA Red Delicious WAExFcy 72s 17.00 80s 17.00-18.00 mos 17.50 one label 18.50 88s 17.00-18.00 mos 17.50-18.00 preferred labels 18.50-21.00 100s 17.50-18.00 one label 18.50 USEXFcy 72s 15.00-18.00 64s 15.00-16.00 80-113s 16.00-18.00 few 15.00 125s 15.00-17.00 138s 15.00-16.00 Golden Delicious WAExFcy 88s 23.00 100s incl USEXFcy 21.00-23.00 Granny Smith WAExFcy 100s 22.00 NEW CROP ctn cell pack NY Jersey Mac Comb USEXFcy & USFcy 80s & 100s 16.00 120s 14.00 McIntosh Comb USEXFcy & USFcy 120s 14.50 ctn 12-3 lb film bags 2-1/4" min NY McIntosh US#1 9.00 ctn tray pack ARGENTINA Granny Smith 90s 18.00 100s 18.00-19.00.

APPLE-PEARS CA 1-lyr flats Kosu 18s 12.50 Shinseiki 18s 15.50 2-lyr flats Kosu 48s 14.50.

APRICOTS ID 18-lb ctn US#1 1-5/8 min Royal Orange 16.00.

AVOCADOS ABOUT STEADY CA 2-lyr ctn Hass 40s 51.00-52.00 FL flat ctn Various Greenskin varieties 8-9s 9.00-10.00 10s 9.00-10.00 few 10.50 12s 9.00-10.00 mos 10.00 few 10.50 14s 9.00-10.00 CHILE 2-lyr ctn Hass 45-50s 40.00.

BANANAS Imports ctn approximately 40-lb 12.25 fair qual 10.75 film wrpd 11.75

Institutional pack Petite 150s 11.00.

BLACKBERRIES OR flats 12-1/2 pt film wrpd cups via air 10.00 ord cond 3.00 NC flats 12-1/2 pt film wrpd cups fair cond 10.00-12.00 NJ flats 12-1 pt film wrpd cups 12.00-15.00 mos 12.00 ord cond 6.00. BLUEBERRIES SUPPLIES LIGHT NJ flats 12-1 pt film wrpd cups sml-med 13.00 MI flats 12-1 pt film wrpd cups med 12.00. CHERRIES NO SUPPLIES.

COCONUTS DOMINICAN REPUBLIC sacks 40s few 14.00.

FIGS SUPPLIES INSUFFICIENT TO QUOTE.

GRAPES-TABLE ABOUT STEADY CA 23-lb lug & ctn Thompson Seedless 12.00-15.00 mos 13.00-14.00 fair qual 10.00-11.00 one label 17.00 Flame Seedless 13.00-15.00 mos 14.00-15.00 one label 16.00 Exotics 13.50-14.00 mos 14.00 Superior Seedless 12.00-14.00 Black Seedless 18.50 Cardinal 11.00-12.00 21-lb film bags Thompson Seedless 15.00 Flame Seedless 13.00-15.00 best mos 14.00-15.00 fair cond 10.00-11.00 ord cond 8.00 12-1 quart bkt Concord 8.00-10.00.

KIWIFRUIT STEADY NEW ZEALAND 1-lyr flat 36s 7.50 39s 8.00 42s 7.50.

MANGOS MEXICO flat ctn Tommy Atkins 12s 6.50-7.00 Kent 9-10s 6.50-6.75 12s 6.50-7.00 mos 6.50.

NECTARINES STEADY CA 25-lb ctn Fantasia 56-64 sz 15.00 80 sz 13.00 Royal Giant 64 sz 13.00-16.50 72-80 sz 13.00-14.90 Sparkling Red 64 sz 16.50 72s sz 14.00-15.00 80 sz 14.00-14.50 July Red 56 sz 16.00 2-lyr ctn 42s 15.00-16.50 48s 16.50 56s 16.

PAPAYAS HAWAII ctn via air 12s 15.00.

PEACHES ABOUT STEADY NJ & PA NO SALES REPORTED CA 25-lb ctn 25-lb O'Henry 64 sz 13.00-14.00 2-lyr ctn O'Henry 36s 15.50-16.00 48-50s 14.50 ord cond 4.00-6.00 Red Globe 48s 10.00-12.00.

PEARS STEADY CA Bartlett US#1 36-lb ctn 90s 22.00 100s 20.00 110 sz 19.00 120 sz 16.50 135 sz 15.50 Bosc 90s 30.00 100s 28.00 110s 26.00 120s 24.00 4/5 buctn wrpd US#1 Bartlett 90s 27.00 100s 25.00 120s 23.00-24.00 120s 19.00-21.00 135s 18.00-19.00 150s 16.00 Bosc 90s 34.00 100s 32.00 110s 30.00 120s 28.00 NY 4/5 buctn US#1 2-1/2" & up Clappe 10.00.

PERSIMMONS NO SUPPLIES.

PINEAPPLES HAWAII ctn via air 6s 11.75-12.00 DOMINICAN REPUBLIC 2-lyr ctn 10s 8.50-9.00 COSTA RICA 2-lyr ctn fair qual 8-16s 6.00.

PLUMS STEADY CA 28-lb ctn Laroda 3x4 sz 12.00-13.00 4x4 sz 14.50 Friar 2x2 sz 17.00-18.00 some incl fair cond loos 16.00 2x3 sz incl fair cond 15.00-17.50 mos 15.00-17.00 2x3x3 sz 13.00-16.00 mos 14.00-15.00 fair cond 10.00 3x3 sz 13.50-14.50 2x3x4 sz 11.00-12.00 3x4 sz 11.00-12.00 some 13.50 ord cond 7.00 3x4x4 sz 13.00 fair cond 10.00 Grand Rosa 2x2 sz fair cond 8.00-10.00 3x4 sz 14.00-15.00 3x4x4 sz 13.00 Royal Diamond 2x2 sz & 2x3 sz 22.00 2x3x3 sz 20.00 3x3 sz 19.00 3x4 sz fair cond 12.00-14.00 4x4 sz fair cond 11.00-13.00 Queen Ann 3x4 sz fair cond 12.00-14.00 Wickson 3x4 sz 13.50 El Dorado 3x4x4 sz 10.00 Catalina 3x4 sz 10.00-11.00.

PRUNES WA 30-lb ctn WA#1 Early Italian type 1-1/4" min 9.50 OR 30-lb ctn OR#1 Italian type 1-1/4" min 9-9.50 (CORRECTION FOR YESTER-DAY'S REPORT: SHOULD HAVE READ 9-9.50).

POMEGRANATES NO SUPPLIES.

RASPBERRIES CA flats 12-1/2 pt film wrpd cups Red one label 16.00 OR flats 12-1/2 pt film wrpd cups via air Red fair cond 10.00.

STRAWBERRIES LOWER CA flats 12-1 pint bkt med-lge 8.00-9.00 some hias 11.00 preferred labels 13.00.

CANTALOUPS ABOUT STEADY CA 1/2 ctn 12s 7.00-8.50 mos 8.00 some 9.00 fair cond 5.00 15-18s 8.00-9.00 few 7.00 TX 1/2 ctn fair cond 15-18s 5.50-6.00 AZ 1/2 ctn 12s fair cond 7.00 NJ 1-lyr ctn 6s 4.00-5.00 7-9s 4.00 14s 3.00.

HONEYDEWS LOWER CA 2/3 ctn 5s 5.00-6.00 6s 5-5.25 8s 6.50 TX 2/3 ctn poor cond 4-6s 2.50-3.00.

MISC MELONS CA 2/3 ctn Orange Flesh 5s 10.00.

WATERMELONS STEADY avg weight per melon TX Jubilee 38-lb 5.50-6.00 34-1/2 lb 5-5.50 MD Crimson Sweet 20-lb 1.50-1.75 NJ Crimson Sweet 28-lb 3-3.50.

Southern Maryland Regional Farmers Market Wholesale Produce Auction

Cheltenham, Md.
Sale Days: Fri., Mon., and Wed., 11:30 a.m.
1-301-372-1066
Price Summary For Aug 10, 13 & 15
Report Supplied by Auction
GREEN BEANS: 3.00-11.25 BU.
LIMA BEANS: 8.50-16.00 BU.

YELLOW WAX BEANS: 1.00-6.50 BU.

CUCUMBERS: SMALL .50-6.00; SMALL TO MEDIUM 2.50-12.00; LARGE 9.00-10.50, ALL 1 1/9 BU
EGGPLANT: 3.00-9.00 1 1/9 BU.
OKRA: 8.00-11.00 1/2 BU.
PEPPERS: GREEN AS FOLLOWS, MEDIUM 2.50-10.00, LARGE 2.75-9.00, EX.LGE. 7.00-8.25, ALL 1 1/9 BU.; RED, MED. 4.00, LGE. 4.50-6.25; HOT CAYANA 4.00-8.00 1/2 BU.; JALAPENO 1.00-8.00 1/2 BU.; HOT HUNGARIAN 5.00 1/2 BU.; CHERRY 5.50 1/2 BU.

PICKLES: SMALL 7.00-10.00 1/2 BU.; MED. 19.00; LARGE 10.50 1/2 BU.

POTATOES: RED 3.50 1/2 BU.; 4.50-7.50 BU.; WHITE 2.00-8.00 BU.; 1.25-3.00 1/2 BU.

SQUASH: PATTYPAN 1.75-5.75 1/2 BU., YELLOW 2.00-6.00 1/2 BU., ZUCCHINI 2.00-6.00 1/2 BU.; ACORN 4.50 1 1/9 BU.

SWEET CORN: BULK .50-2.05 DOZ., 2.005 DOZ. BOX; 2.00-2.70 2 DOZ. BAG.

TOMATOES: SM. 2.00-10.50; MEDIUM 1.25-11.00; LARGE 2.75-12.00, XLGE. 5.50-11.75, ALL 25 LBS.; BY THE BUSHEL, MEDIUM 9.00; LARGE 9.00; CHERRY 3.50-5.50 12 PT. FLAT; ITALIAN PASTE 4.00 25 LBS.

APPLES: 1.00-2.00 1/2 BU. MEDIUM. CANTALOPES: BULK, SM. .25 EACH; MED. .35-4.50 EACH; LGE 30-140 EACH; MIXED SIZES BULK .35-1.00; 8 CT. BOX 4.00-8.00; 10 CT. BOX 3.00-6.50; 12 CT. BOX 4.00-9.50.

NECTARINES: LARGE 13.00 1/2 BU PEACHES: LARGE 9.00-11.00 1/2 BU PEARS: LARGE 4.00-7.50 1/2 BU.

PLUMS: ITALIAN PRUNE 8.00-10.00 1/2 BU.

WATERMELONS. BULK SMALL 50-140; MEDIUM 45-225; LARGE 45-1100 (75-85 LBS. IN THE 11.00 CATEGORY).

CUT FLOWERS (ASTERS, COX-COMBS, DAHLIAS AND ZINNIAS) 1.50-17.00 BUNCH.

Kutztown Produce Auction

Fleetwood, PA
10 a.m. Aug. 13-16
Report Supplied by Auction
APPLES: .50 3 LB. BAG; 5.00-10.00 BU.; RAMBOS 2.75-6.00 BU.
BLACKBERRIES: .40 1/2 PT.
BEANS: 5.00-11.00 BU.
RED BEETS: 3.00-6.00 1/2 BU.
CABBAGE: 1.75-5.00 BOX.

Lancaster Farming, Saturday, August 18, 1990-A15

CANTALOPES: LARGE 1.00-1.30; MEDIUM .55-.95; SMALL .45-.60 EACH.
CUCUMBERS: 1.00-6.50 BU
CUT FLOWERS: GLADIOLI 20-30 EACH, BOUQUETS 1.10-1.70 EACH.
HERBS: 60 BUNCH.
HONEYDEWS: 1.40 EACH.
EGGS: .65 DOZ.
LIMA BEANS: 5.50-9.50 1/2 BU.
MUMS: .70 POT.
MUSHROOMS: 6.00-7.50 10 LBS.
NECTARINES: 7.50-11.50 1/2 BU.
PEACHES: 3.00-9.00 1/2 BU.
PEARS: 1.75-7.75 1/2 BU.
PEPPERS: 1.00-8.00 BU.
PICKLES: 3.00 1/2 BU.
POTATOES: NEW .50-1.00 5 LBS.; 2.50 10 LBS.

PUMPKINS: .15-1.10 EACH.
SPRING ONIONS: .20-30 BUNCH.
STRAWBERRIES: .20 PINT.
SQUASH: WINTER .75-6.00 BU.; YELLOW 1.25-5.00 BU.

SWEET CORN: 50-1.10 DOZ.; SILVER QUEEN .70-1.55 DOZ.

TOMATOES: LARGE 1.50-9.00; MEDIUMS 1.00-6.00, PLUM 1.00-2.50, ALL 25 LBS.

WATERMELONS: REG. .40-1.50 EACH; SEEDLESS .80-2.70; LARGE YELLOW 1.90-2.50; MEDIUM SUGAR BABY .35-1.00, ALL EACH.

ZUCCHINI: .50-3.75 BU.
NEXT WEEK'S AUCTION DAYS ARE MONDAY THROUGH FRIDAY, 10 A.M. SATURDAY 9 A.M.

Leola Produce Auction

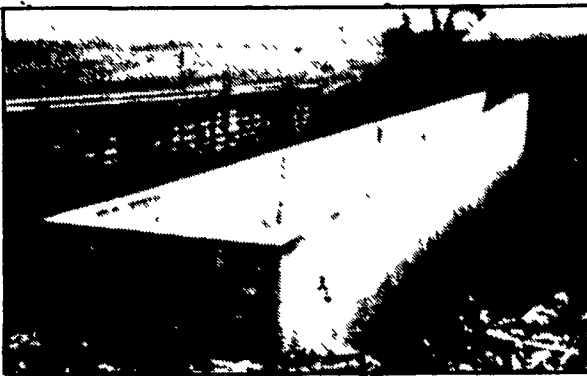
Leola, PA
Aug. 14, 1990
Report Supplied by Auction
APPLES: EARLY VARIETIES 3.00-4.25 1/2 BU.
GREEN BEANS: 12.00-17.00 1 1/9 BU.
YELLOW WAX BEANS: 12.00-20.00 1 1/9 BU.
LIMA BEANS: 20.00-25.00 1 1/9 BU.
BROCCOLI: 2.75-4.00 12-14 CT.
CABBAGE: GREEN .15-20 HEAD, 2.50-3.25 CRATE.
CUCUMBERS: 6.50-10.50 1 1/9 BU.
CANTALOPES SMALL TO MEDIUM .40-.54 EACH; LARGE TO EXTRA LARGE .65-1.20 EACH.
EGGPLANT: 6.00-9.00 1 1/9 BU.
NECTARINES: 8.00-11.00 1 1/9 BU.
ONIONS: 6.75-9.75 50 LBS.
PICKLES: 4.00-10.00 1/2 BU.
(Turn to Page A17)

POURED SOLID CONCRETE STORAGE SYSTEMS

17 Years Experience In Pouring Concrete Manure Pits!



Above-ground Liquid Manure Tank For Dairy Operation - 235,000 Gal.

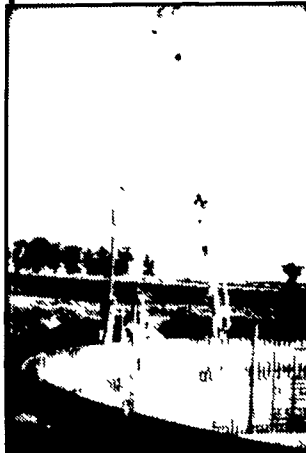


Hog House-Liquid Manure Pit

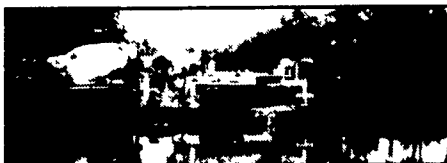


In-ground Liquid Manure Tank For Hog Operation - 324,000 Gal.

Construction Of In-ground Liquid Manure Tank- 425,000 Gallons.



CONCRETE PUMPING SERVICE AVAILABLE



Mixer And Boom Trucks



92' Boom Placing Concrete



Placing Concrete On Site

Take the questions out of your new construction. Call Balmer Bros. for quality engineered walls.

All sizes available round or rectangular

Invest in Quality - It will last a lifetime.

Balmer Bros.

CONCRETE WORK, INC.

243 Miller Road Akron, PA 17501

(717) 733-0353
6:30 AM - 3:30 PM

(717) 859-2074
After 6:00 PM