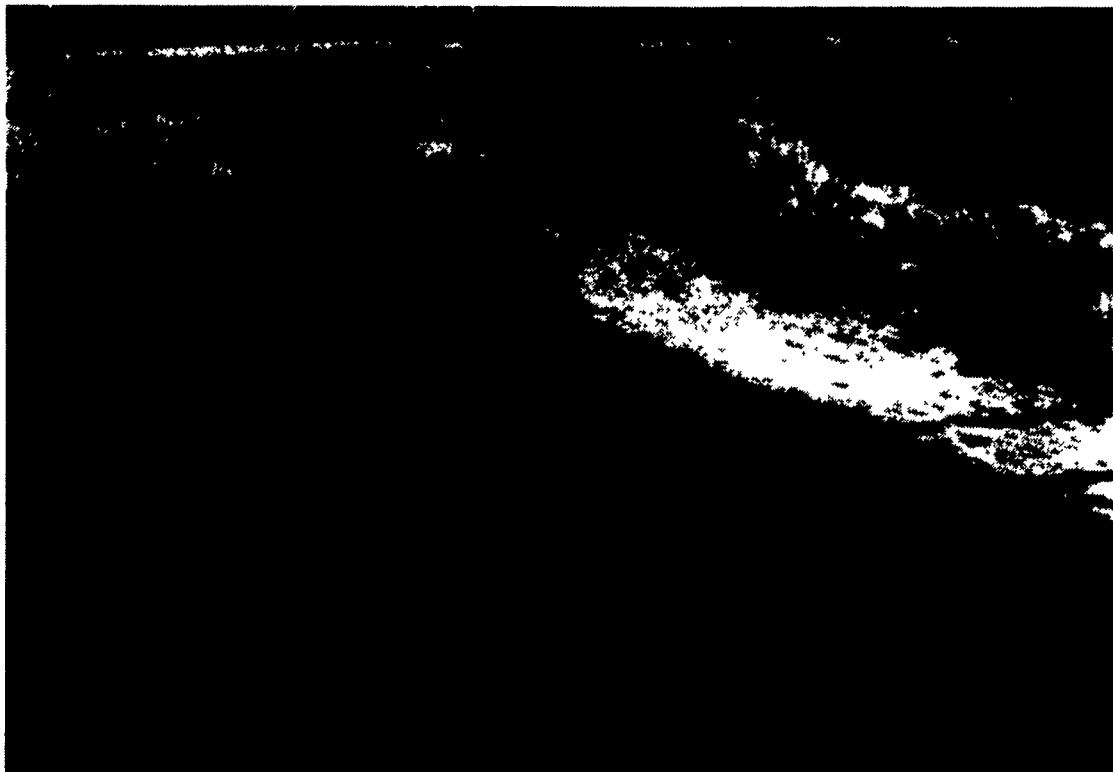


Precise Flush System Cleans Dairy



Agpro's Superflush Valve provides "one touch" air operation for precise control, with valve open time ranging from 20 to 30 seconds for fast, efficient cleaning. In the "flush" position, the valve rises from the floor to provide total cleaning with the capability of delivering 4,000-6,000 gpm in a uniform sheet of water.

PARIS, Texas — Planning to construct a new dairy facility, freestall barn, or add new feed lanes to your existing dairy facility? Agpro's Superflush Valve provides one of the best flush cleaning systems available.

"One-touch" air operation provides precise control, with valve open times ranging from 20 to 30 seconds for fast, efficient cleaning. There were no exposed plumbing or tanks always in the way.

When the unit is not in use, the valve sets flush with the floor to allow cattle and vehicle passage (operators can even scrape over it in adverse weather conditions).

In the "flush" position, the valve rises from the floor to provide total cleaning with the capability of delivering 4,000-6,000 gallons per minute in a uniform sheet of water.

For more information, contact Agpro, Inc., (800) 527-1030.

Egg Producers Demand More SE Research

WASHINGTON, D.C. — The Northeast United Egg Producers (NUEP) recently released a list of "suggested research topics" and asked all private and public researchers and those controlling funding to put Salmonella Enteritidis (SE) at the top of their priorities.

From NUEP's headquarters in Washington, D.C., Al Wenger, SE spokesperson, said, "Although the incidence of SE outbreaks is low and usually involves handling

abuse, producers don't want anyone to get sick from eating our product. We are willing to go to great lengths to control SE, but there are too many unknowns preventing us from getting ahead of the problem".

The producers strongly believe that the industry needs a better grasp of what's causing the disease and what the effects of measures such as refrigeration and competitive exclusion are. Many proposals brought forth are expensive to carry out and their effectiveness arguable.

For further information, contact Mac McLaurin, general manager, at (202) 296-8248.

A
ADJUSTABLE
FEED DEPTH

B
BEST FEED
CONVERSIONS

C
CHAIN CARRIES
FEED IN TROUGH

D
DIRECT DRIVE
OR BELT DRIVE

E
ENERGY EFFICIENT
MOTORS

F
FLAT CHAIN
FEEDING

G
GREAT RESULTS
PRODUCERS EXPECT

H
HIGH LIP FEED
TROUGH

I
IDEAL FEEDING
SYSTEM


J
JUDGED "BEST"
BY PRODUCERS

K
KEEPS WORKING
YEAR AFTER YEAR

FROM

A to Z

**THE VERY
BEST CAGE
FEEDER
AVAILABLE**



Big Dutchman.

Z
"ZERO DEFECTS"
GOAL IN
MANUFACTURING

Y
YOURS IF YOU BUY
FROM HERSHEY

X
X-PANSION IN
FUTURE EASIER

W
WORLDWIDE CUSTOMER
ACCEPTANCE

V
VIRTUALLY
TROUBLE-FREE

U
UNDERSIZED EGGS
KEPT TO A MINIMUM

T
THOROUGHLY PROVEN
DESIGN

S
SOFT-START FOR
INCREASED MOTOR LIFE

R
RUNS EVEN WITH
WET FEED

Q
QUALITY WORKMANSHIP
AND MATERIALS

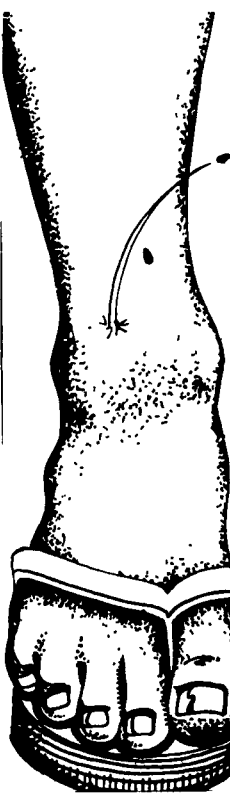
P
PEAK EGG
PRODUCTION ACHIEVED

L
LARGE EGG PRODUCTION
MAINTAINED LONGER

M
MINIMAL MAINTENANCE REQUIRED

N
NO SEPARATION OF FEED
INGREDIENTS

O
OPTIMUM PERFORMANCE



Ehrlich gets the jump on fleas.

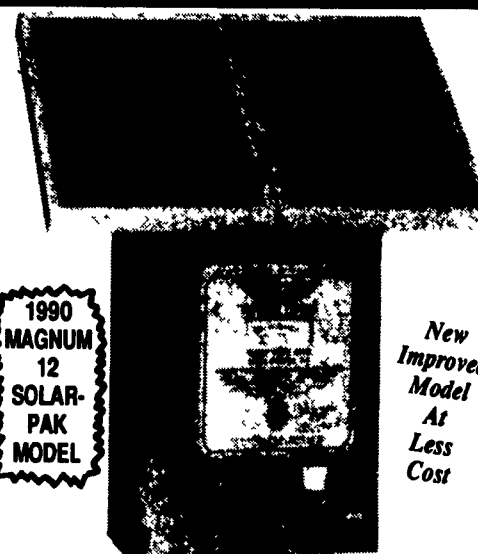
Fleas feed only on blood. Prior to biting humans they may have fed on skunks, rats, or deer. Fleas don't care.

Adult fleas can go two years without a meal but prefer to eat often. They usually bite humans on the legs but will jump onto beds and chairs if given a chance. This can be more than just irritating. Fleas are among the most notorious disease carriers in the world.

Allowed to roam your home, one female flea will lay about 450 eggs. Get the jump on fleas before they jump on you. Call Ehrlich for a free inspection, no obligation.

The Bug Stops Here.
Ehrlich Since 1928

1278 Loop Rd.
Lancaster, Pa.
17604
717-397-3721



1990 MAGNUM 12 SOLAR-PAK MODEL

New Improved Model At Less Cost

Parmak Technology Brings You This Powerful, Low Impedance, Advanced 12-Volt Fence Charger... With Ferrite 100% Solid State Inverter Circuitry With Built-In Performance Meter.

- Warranted for 2 years
- UL listed
- 12-volt Gel battery warranted 1 year

Magnum 12 Solar-Pak eliminates battery recharging, thereby saves your time and money. The Sun's energy charges the fence by day, and a sealed 12-volt battery powers the fence at night.

PARMAK
Made in U.S.A.

SALES AND SERVICE
PEQUEA BATTERIES
103 A N. Ronks Rd., Ronks, PA 17572
Distributor & Warranty Station For Parmak



H **ERSHEY EQUIPMENT COMPANY, INC.**

Designers of Quality Systems for Poultry, Swine and Grain Handling

SYCAMORE IND. PARK
255 PLANE TREE DRIVE
LANCASTER, PA 17603
(717) 393-5807

Route 30 West
at the
Centerville Exit.