

WENGBERS INC.

HOURS:
MON-FRI 7:30 To 5:00
SAT 7:30 To NOON

251 SOUTH RACE STREET, MYERSTOWN, PA. 17067

PH: 717-866-2130

1-800-552-5080

FAX 717-866-4300

NIGHTS
PHONE
717-866-7147
or
717-273-9089



1979 Case 450B 6 Way Dozer ROPS w/ Sweeps, New Paint.

Was ~~\$18,500~~
Now **\$14,500**



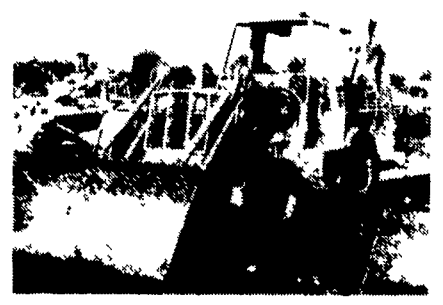
Petibone PT18 Skidder, GM Diesel, Runs & Operates, Fair Condition.

Only ~~\$5,900~~
Reduced To **\$3,900**



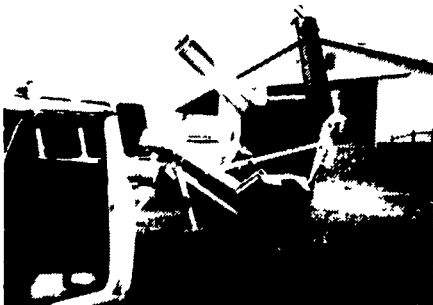
1978 Waldon 6000 Diesel Rubber Tired 4WD Loader With Backhoe, 57 Horsepower 4 Cylinder Perkins.

Good Buy For Only
\$9,900 With Hoe
\$7,900 Less Hoe



1978 Dynahoe 190 Series 3 Tractor-Loader-Backhoe- New Paint, GM Diesel, Runs & Operates Decent.

Only **\$16,500**



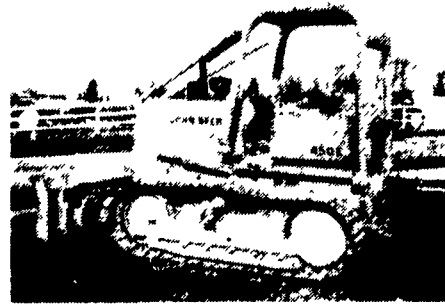
Vemmer TS 44 Tree Spade On Old IH 4x4 Truck.

Tree Spade **\$7,000**
Truck **0**
Package **\$7,000**



Cat 922B Rubber Tired Loader, Diesel, Cab, Operating.

\$9,500 Less Hoe
\$10,500 With Hoe



1986 John Deere 450E Dozer, 6 Way Hydraulic's, 6 Post ROPS, New Paint, Good Undercarriage, Runs Good.

Only **\$29,500**



1983 JD 455 Crawler Loader, Cab, 4 In 1, New Paint.

Only **\$19,500 With Hoe**
\$18,500 Less Hoe



1953 Chevy Pickup, 6 Cylinder, 3 Speed, Runs Good, Some Rust.

Was ~~\$2,800~~
Now **\$1,200**



1984 Sellick 247T Teleporter 4WD Forklift, Diesel, 21' Lift, New Paint, Runs Good.

\$22,500



1976 Cat D4D Dozer, Powershift, Cab, Very Good Undercarriage, 20" Pads, Straight Blade With Tilt Cylinder.

Was ~~\$18,500~~
Reduced To **\$14,500**



NEW 1990 TRAILERS ON SPECIAL

- 2 Axle, 5 Ton, 14 Ft. \$1,795
- 2 Axle 5 Ton, 16 Ft. \$1,895

MISC. CONSTRUCTION NEW EQUIPMENT

- | | |
|--|---|
| (100+) Used Hoe Buckets.. Come Look | Boom Poles.....\$125 |
| (75) Loader Buckets.. Come Look | King Kutter Scraper Blades 6', 7' And 8' \$225-\$995 |
| (75) Self Forklift Forks..... Come Look | Seeders- Broadcasters- 3 Pt.\$395 |
| Ford 4500 Frost Tooth.....\$395 | King Kutter Stone Rakes 4', 5', 6', 7' & 8' \$395-\$595 |
| Gearamatic 8G Winch.....\$500 | King Kutter Post Hole Diggers 6", 9" And 12" Augers.....\$435 |
| 3 Pt. Hitch For Case 580.....\$695 | King Kutter Discs 5 1/2' And 6 1/2' - 3 Pt. \$495-\$595 |
| Cargo C3 Winch...\$1000 | King Kutter Grading Boxes 4', 5 1/2', 6', 7' & 8'. \$495-\$595 |
| JD 640B Log Skidder Blade...\$1000 | King Kutter Rotary Mowers 4', 5' And 6' 3 Pt. And Pull Type. \$495 & Up |
| Root Rake 7'\$1400 | Aerator 5'- 3 Pt.....\$695 |
| Ripper.....\$1500 | King Kutter Finish Mowers 4', 5', 6' & 7'- 3 Pt. \$995-\$1295 |
| (3) Tree Planters .. \$350-\$1500 | Long Rototillers 55", 63", & 71"..... \$1495-\$1995 |
| (2) Tree Shearer. \$1500-\$3500 | |
| 1 Ton Roller.....\$2000 | |
| Giant Leaf Vacuum's- 2 For \$2000 | |
| MM 3 Pt. Woodchipper....\$3000 | |
| Sheepsfoot Roller..\$3900 | |
| Schramm 160 Air Comp.....\$3900 | |
| Snowblower For Big Loader.....\$3900 | |
| Wayne Stump Grinder.....\$3900 | |
| (2) Sweepers\$600 to \$2900 | |
| 1-2 Ton Vibratory Roller.....\$4900 | |
| Huber Maintainer ..\$4900 | |
| Sheepsfoot Roller..\$4900 | |
| AG D Grader.....\$4900 | |
| Jeager 175 Diesel Compressor.....\$4900 | |
| Petibone 5 Ton Yard Crane.....\$5900 | |
| Vermeer Tree Spade 44' On 4x4 Truck.....\$7000 | |
| Construction Ramp.....\$8500 | |
| JD 760 Scraper..\$13,700 | |

(14) DOZERS

- (2) IH 500 Diesel 6-Way.... \$3500-\$8900
- JD 440\$6500
- JD 350B.....\$8900
- Case 450.....\$12,500
- (2) Cat D4D \$9500-\$13,500
- (2) Case 450B-6 Way. \$14,500-\$18,500
- JD 450D-6 Way..\$25,000
- Cat D5B.....\$29,500
- JD 450E.....\$29,500
- IH TD 25C w/Ripper\$49,500
- Case 450B 6 Way LGP 1980 Call

(8) FORKLIFTS

- White 4000 lb.....\$3900
- IH 2504.....\$4900
- White 40 LP.....\$5900
- JD 480B-21'\$9500
- Clark 8000 lb. Gas.....\$11,500
- Komatsu FG40 1980 8000 Lb. & Triple Mast.....\$14,500
- Case 586C.....\$18,500
- Sellick Teleporter- 1984 247T. 4WD.....\$22,500

(20) CRAWLER LOADERS

- MF 400-4 In 1.....\$5900
- Case 350.....\$7900
- (2) JD 450\$8900 to \$9900
- JD 350B w/Winch.....\$10,500
- (2) Case 450 \$5900-\$10,900
- IH 125C.....\$10,900
- Case 1150B.....\$11,900
- Cat 931-Cab.....\$12,900
- JD 450 w/Hoe.....\$12,900
- JD 455-Cab-Hoe.....\$19,500
- JD 555.....\$19,500
- Case 850B.....\$19,500
- Cat 941B.....\$21,500
- Cat 955L.....\$23,500
- Case 455C.....\$29,500
- Case 855C.....\$29,500
- Cat 977L-Ripper.....\$36,500

(6) LOG SKIDDERS

- Tree Farmer.....\$2900
- JD 440.....\$3900
- Petibone PT 18....\$3900
- Tree Farmer C5D..\$4900
- JD 440A.....\$7500
- JD 540B.....\$14,500

(22) BACKHOES

- (9) Rigid Hoe Attachments\$2500 & Up
- (7) 3 Pt. Hoe Attachments\$2500 & Up
- Case 530CK.....\$3900
- Ford 4500.....\$3900
- Case 530CK.....\$4900
- MF 300 Gas.....\$4900
- Case 580CK.....\$5900
- JD 2010.....\$5900
- Case 480CK.....\$5900
- IH 2504-Gas.....\$6900
- Kubota KH10D Mini Excavator.....\$9500
- IH 3600 Ext.....\$10,500
- (2) Case 580B-Cab.....\$10,500
- JD 510.....\$12,500
- Case 580C.....\$12,500
- (2) JD 410\$12,500 to \$13,500
- Dynahoe Series 3 190\$16,500
- JD 410-4WD-1984-Cab.....\$18,500
- JD 310B 1986 ROPS.....\$18,500
- Case 580 Super E\$22,500
- Case 480E-Cab...\$22,500
- Case 580 Super E.....\$24,500

(15) TRAILERS

- Hudson 6 Ton Tag-A-Long.....\$1700
- 1989 2 Axle 5 Ton.....\$1795
- New 4 Ton Dump Trl.....\$1800
- New 5 Ton Dump Trl.....\$2100
- 1972 Fruehauf 43' Flat\$3500
- 1983 Eager Beaver 11 Ton.....\$3900
- 35 Ton Lowboy.....\$4250
- New 11 Ton Tag.....\$6900
- New 25 Ton Tag w/Air.....\$10,800
- Cat 983 w/Cab.....\$39,500

(5) TRACTORS WITH LOADERS

- Ferguson 20.....\$3000
- MF 40.....\$5900
- Ford 3400.....\$7900
- Ford 335.....\$8500
- IH 260A.....\$9500

(10) TRUCKS

- (4) 1953 to 1960 Chevy Pickups..From \$1200
- 1971 IH 1X Dump..\$3900
- 1972 Chevy 35' Bucket Truck...\$4800
- 1985 Jeep Cherokee 4x4\$7500
- 1986 Jeep Cherokee 4x4\$8900
- 1985 Ford E350 Mini Bus.....\$11,750
- 1970 GMC Astro w/24' Rollback.....\$15,000

(8) RUBBER TIRED LOADERS

- Waldon.....\$7,900
- Cat 922B-Cab-Diesel.....\$9,500
- Ford A62\$17,500
- Cat 920\$19,500
- Ford A64\$19,500
- JD 544B 1980-Cab-New Tires.....\$24,500
- Cat 930\$24,500
- Ford-A66..... Call

HUNDREDS OF CRAWLERS & BACKHOES FOR SALVAGE

EXCELLENT SELECTION OF AFFORDABLE USED EQUIPMENT