

Ag Progress Days

(Continued from Page A46)
 predicting which pesticides will have the best chance of success against insects that have developed resistance to certain classes of insecticides. If successful, this

technique could take the form of a small field kit that a grower could place some of the target insects in from his field and see which insecticides the insects are resistant to and which they are susceptible to.

Rabbits Bring Highest Price,

(Continued from Page A29)
 ers, this year's sale saw a noticeable increase in participants and observers, with 94 bidders registered.

Another first for this year's livestock sale was the awarding of a \$1,000-a-year college scholarship by H.J. Smith & Sons, of Annville.

The first recipient of the scholarship is Kevin Goss, who is to attend Millersville College and pursue a degree in art education. Goss is currently a member of the county 4-H dairy club.

The scholarship is to be awarded

annually, and those who remain eligible and maintain a minimum 2.50 cumulative grade point average, can continue to receive a \$1,000 scholarship for up to four years.

Overall, compared to last year's sale, most prices and numbers were higher.

In 1989, champions sold, per pound, at: steer \$1.90, lamb \$4, hog \$4.10, carcass hog \$350, carcass lamb \$100.

On the average, hogs sold this year at \$1.68 a pound, steer \$1.07, lamb \$2.05, rabbit \$7.98.

More effective control and less money wasted would be the result.

Improved inoculants for legume seeds are being developed. These inoculants will contain "super" strains of rhizobia that will allow legumes to be even more efficient in fixing nitrogen from the air. We may also see a new way that the famous biological insecticide *Bacillus thuringiensis* is used. By incorporating a gene from Bt into an endophytic fungus and then infecting seed corn with the endophyte, the toxin from the Bt spreads throughout the corn plant as it grows. The

corn then has a built-in insecticide to use against the pesky European cornborer.

A great bit of news has been generated regarding applications of biotechnology in plant genetics. And rightly so, since about half of biotechnology research is going to this type of work. Varieties of crops resistant to certain herbicides are under development, allowing for increased use of these "environmentally friendly" herbicides. Manipulation of genes to produce more pest resistant crops may lead to reduce reliance on

pesticides, less applicator exposure, and less chance of environmental impact. You may even see the day when there are varieties of wheat that can fix their own nitrogen like alfalfa and soybeans do. Don't hold your breath for that one, though. One estimate recently placed having that capability in possibly five years in a laboratory situation and maybe 20 years from now for a commercially available variety.



ABS
 AMERICAN
 BREEDERS
 SERVICE

Committed to earning your business

29H4710 JAMAICA
 7% CE @ 2590 Calvings
 +208 Protein Dollars
 +1808 Milk
 +1.18 PTA Type
 T. Jason x. Valiant
 Stud Sampled
 94% REL (USDA)

\$15.00 Per Unit

7-90 USDA/HA

1-800-ABS-STUD

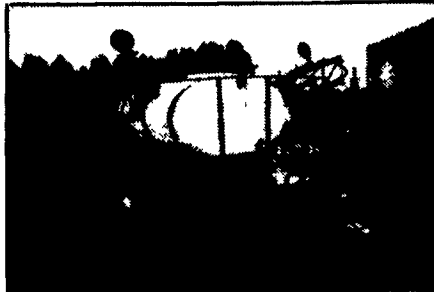
THE LELY CORPORATION

PO Box 1060 • Wilson, NC 27893 • 919 291 7050 • FAX 919 291 6183

Be sure to visit our display at
Ag Progress Days Loc: W. 4th

Lely Corporation
 Hwy. 301 South, PO Box 1060
 Wilson, NC 27894-1060
 919/291-7050

NOBODY has a larger
 selection of sprayers, parts
 and accessories in stock...
...NOBODY



- Pull behind the 502TP...A rugged sprayer with leaf spring suspensino boom.

OR



- Turn your pick-up into a sprayer with the SK400. Now with a newly designed suspension boom.

OR



- For more versatility from your tractor, we have, 360 to 500 gal. saddle tank systems available for most tractors.

See Us At
Ag Progress Days
 on
West 1st St.

We have parts & accessories from leading companies available for all our sprayers:

Hydro	Spraying Systems	Rotec Tanks
Ace	Raven	Solo
DeLavan	Scot	Flo Couplings
Banjo	Greenleaf	McKenzie
		Fill-Rite

From The Makers Of Terra-Gator!



ag·chem
 EQUIPMENT CO. INC.

**Call Today For Our Current Catalog
 And The Dealers Nearest You**

(717) 569-2610

Serving The Farming Industry For Over 25 Years.
 1188 Enterprise Rd., East Petersburg, PA 17520