

ROLLING ON...IN THE 90's



MEETS THE CHALLENGE

# The "Quality Crafted" Line Better Seedbeds...Better Stands!

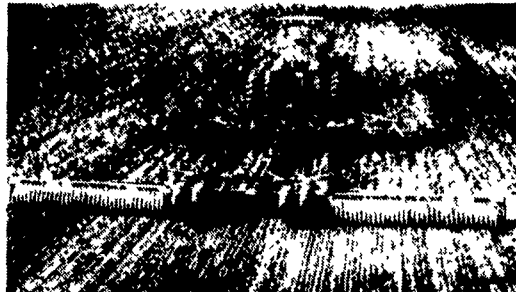
Visit With Us During Ag Progress Days  
Located On E. 5th Street

## P10 PULVERIZERS



**P10 SERIES TRANSPORT CONCEPT** Brillion's transport concept is new to the industry. Machine weight is hydraulically rotated over the wheels for transport. This reduces drawbar hitch weight considerably and provides ample clearance for transporting. 10 ft. thru 16 ft. AVAILABLE WITH 20" DUCTILE WHEEL.

## X-FOLD PULVERIZERS



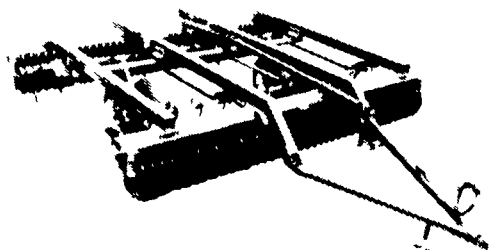
The X-Fold pulverizers are designed to meet the needs of today's larger acreage farmers and Brillion offers them in two models and 11 sizes from 19' through 36'

## XXL PULVERIZER



The XXL is designed to match large-sized tillage tools. Working widths are 38, 40, 42, 44 and 46 feet, yet the XXL folds down to only 16 feet 5 inches for transport. Brillion's lighter weight, 20-inch ductile iron roller wheels make it possible to widen the machine without drastically increasing the weight.

## ML SERIES PULVI-MULCHERS



**PULVI-MULCHERS** Build a firm clod-free seedbed — one that lets all the seeds germinate at one time. 12 ft., 13 ft., 8" & 15 ft. Available w/20-inch ductile iron roller wheels.

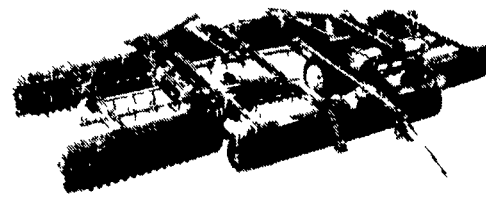
## 20 INCH DUCTILE

### ROLLER WHEELS



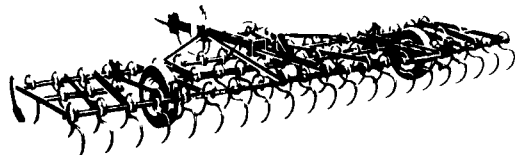
The fact that Brillion leads the industry in the sale of Pulverizers and Pulvi-Mulchers is because all Brillion Roller Wheels are made in Brillion's own modern foundry. This directly affects the cost and quality of these machines and gives Brillion a considerable advantage over the competition. Brillion's newest design, a 20", six spoke ductile iron notched wheel, carries a FIVE-YEAR LIMITED WARRANTY AGAINST BREAKAGE.

## WLS PULVI-MULCHERS



The latest example of how Brillion has met the challenge of the earth and the competition. The front rollers break up surface clods. "C" shaped ribbon teeth or "S" spring tine teeth break up the soil to 6" in depth and pulls clods to the surface. 21 ft. 8", 25 ft. & 30 ft. Available with 20-inch ductile iron roller wheels.

## SPRINGTOOTH HARROWS with "INSTANT" TRANSPORT



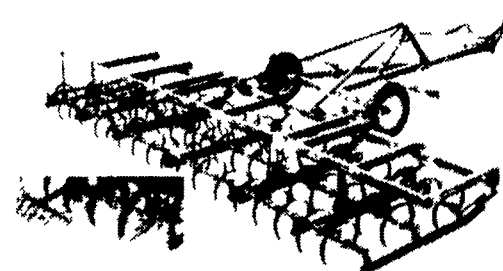
STS and STR series have low profile design with heavier tooth mounting bars, longer wheel wells and PRE-SET depth control. STR models have "C" shaped or ribbon teeth. STS models are equipped with spring tines. 8 to 20 ft.

## 88-INCH PULVI-MULCHERS



This 88" Pulvi-Mulcher was originally designed for the European market, to meet transport limits. However, this new width has found a home among American operators who have limited width requirements.. like truck farmers, nurserymen, fruit and vegetable growers.

## CART HARROWS



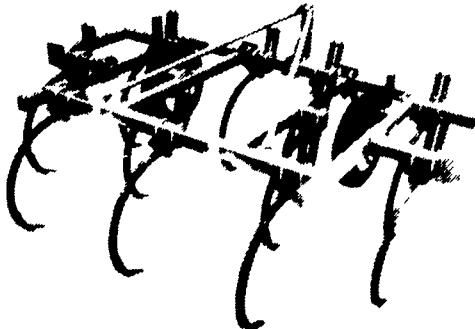
**CART MOUNTED HARROWS** Allows each section of the harrow to follow the contour of the ground but also has a cart that converts the machine for easy transport. 16 ft., 20 ft. & 24 ft.

## FLAIL SHREDDERS



**FLAIL SHREDDERS** Heaviest gearbox on the market eliminates the number one cause of downtime. 12 ft. & 15 ft.

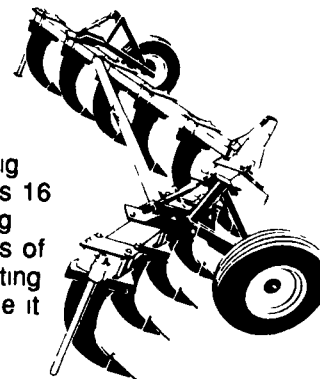
## MOUNTED CHISEL PLOWS



The CPP series of mounted models enables you to turn short and fast... to transport easily, utilizing your tractor's hydraulic system. 7, 9, 11, 13 or 10, 12, 14, 16 ft.

## SUB-SOILERS

The husky, curved shanks of the Sub-Soiler dig down as deep as 16 inches, shattering compacted layers of plow sole and lifting the hardpan while it is being broken. 3, 5, 7, 9, 11 shanks.



## CONTACT YOUR BRILLION DEALER FOR DETAILS

**PENNSYLVANIA**  
ADAMSTOWN EQUIP., INC.  
Box 456,  
Adamstown

GEORGE N. GROSS, INC.  
5261 Davidsburg Road  
Dover

C.B. HOOBER & SON  
Intercourse

CLUGSTON FARM  
EQUIPMENT  
HCR 80 - Box 22  
Needmore

GRUMELLI FARM  
SERVICE  
Robert Fulton Highway  
Quarryville

DEERFIELD AG & TURF  
CENTER, INC.  
RD 2 Box 212  
Watsonstown, PA 17777

WALTER G. COALE, INC.  
2849-53 Churchville Rd.  
Churchville

REED BROTHERS  
EQUIPMENT  
Petticoat Bridge Rd.  
Columbus

MILLER EQUIP. CO.  
Rt. 1  
Bechtelville

GEORGE V. SEPLE  
VanBuren Road  
Easton

LANDIS BROTHERS, INC.  
1305 Manheim Pike  
Lancaster

A.B.C. GROFF, INC.  
110 S. Railroad Avenue  
New Holland

WALTERMYER'S  
S & S INC.  
RD #3, Box 43-B  
Red Lion

S.G. LEWIS & SON, INC.  
352 N. Jenneraville Rd.  
West Grove

FINCH SERVICES, INC.  
PO Box 565  
Westminster

POLE TAVERN EQUIP.  
SALES CORP  
RD #, Box 85A  
Elmer

IVAN J. ZOOK FARM  
EQUIPMENT  
Box 5, Star Route  
Belleville

MESSICK FARM  
EQUIPMENT CO.  
Rt. 283, Rheama Exit  
Elizabethtown

UMBERGER'S OF  
FONTANA  
RD #4, Box 132  
Lebanon

PEOPLE'S SALES  
& SERVICE  
Oakland Mills

SUMMIT MACHINERY, INC.  
PO Box 325  
Somerset

YINGLING IMPLEMENT  
3291 Taneytown Rd.  
Gettysburg, PA 17325

**NEW JERSEY**  
FUSCO MACHINERY, INC.  
799 Rt. 202 & Summer Rd.  
Flemington, NJ

CALDWELL TRACTOR &  
EQUIPMENT  
480 US Route 46W  
Fairfield

CH. RINEHMER & SONS  
RD 1, Berwick

400 N. Atrim Way  
Greencastle

GUTSHALL'S, INC.  
RD 2, Rt. 850 West  
Loyeville

PIKEVILLE EQUIPMENT,  
INC.  
Oley

CHARLES SNYDER, INC.  
RD #3  
Tamaqua

**MARYLAND**  
AG INDUSTRIAL  
EQUIPMENT  
1207 Telegraph Road  
Rising Sun

LESLIE FOGG  
RD #3, Box 179  
Bridgeton

SHORE TRACTOR CO.  
RD #1 - Rt. 9  
Freehold

GUTSHALLS, INC.  
Rt. 34, 1201 Spring Rd.  
Carlisle  
RD 2, Rt. 850 West  
Loyeville

FINCH SERVICES-  
HANOVER, INC.  
515 Frederick Street  
Hanover

N.H. FUCKER & SONS,  
INC.  
Maxatawny

ANGELO'S FARM  
EQUIPMENT  
RD #1 - Box 303  
Perryopolis

M.S. YEARSLEY & SONS  
West Chester