

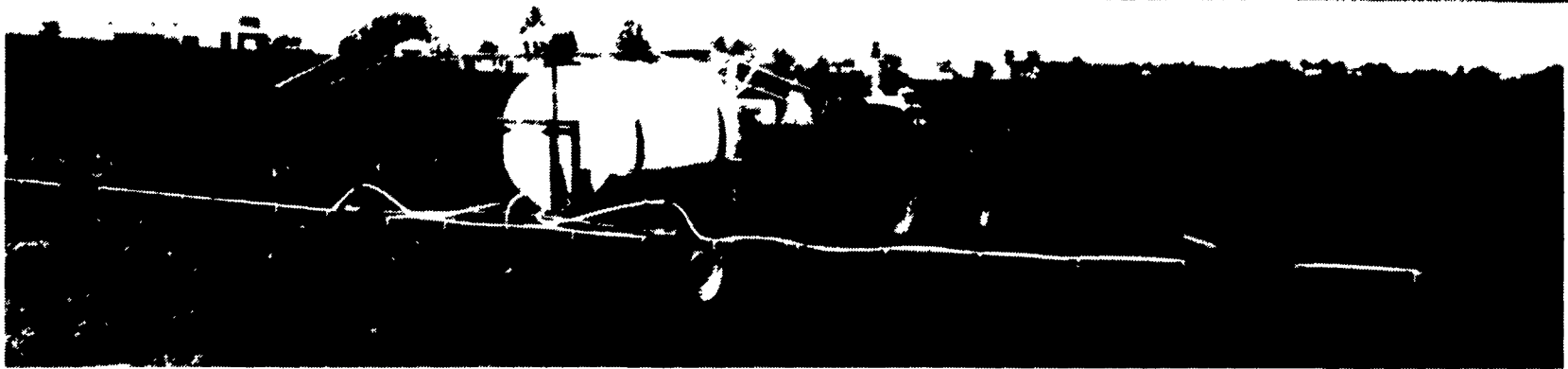
PAUL B. Zimmerman INC.

SPRAYING EQUIPMENT

200, 300 and 500 GALLON TRAILER SPRAYERS

STANDARD FEATURES ON TRAILER-TYPE SPRAYER

- All Welded Steel Main Frame
- Adjustable Width Wheel Spacing
- Hitch Jack
- High Crop Clearance
- Adj. Boom Height
- Poly Tank
- Selector Valve
- Low Overall Height



RAVEN[®] POLY TANKS

25 To 1600 Gal. Vertical and Horizontal



ROUND BALE MOVERS



The Same Unit Can Be Used With One Prong For Center Of Bale Or Two Prongs For Under Bale.

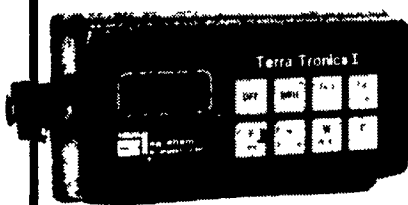
Front End Loader Forks



- Can be mounted on loader bucket in minutes
- No special attachment needed

TERRA-TRONICS I

Electronic Monitor Measures Working Acres And Ground Speed

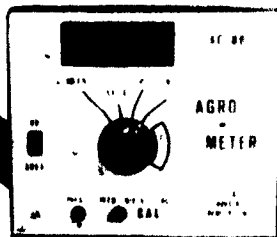


- Easy-to-see digital readout
- Easy-to-operate touch sensitive keys
- Operates with any field implement requiring acre measurement - pulled, mounted, or self-propelled sprayers, combines, etc.

AGRO METER

- Measure Speed, Area, And Distance
- Calculate "On The Go" Pressure Changes
- Large LED Display

Includes Speed Sensor



We Also Stock A Complete Line of **TeeJet** Sprayer Nozzles And Accessories

Hypro[®] Pumps And Accessories

- Sprayer Hose
- Ball Valves
- Nylon Fittings

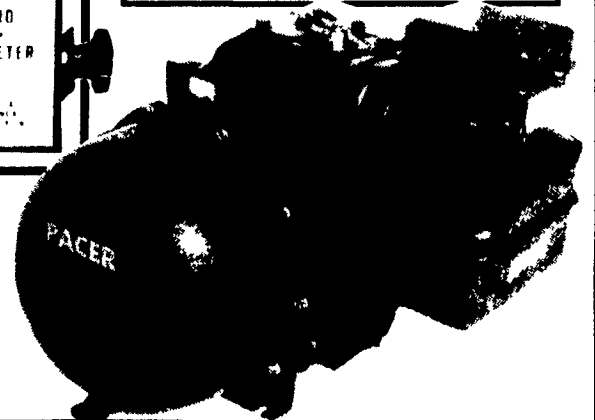
Pacer Self-Priming Centrifugal Pumps For Agriculture

Features:

- Self-priming to 20 feet (6.1 meters)
- Total heads to 80 feet (24.4 meters)
- Capacities to 200 U.S. GPM (628 liters per minute)

- Built in check valve
- Equipped with 2" female threaded connections, NPT

'S' Series 5 HP



'S' Series 3 HP

Visit Us During AG PROGRESS DAYS And See All This Equipment On Display

Located On W. 9th Street

PAUL B. ZIMMERMAN, INC.

Manufacturers - Distributors

295 Wood Corner Rd., Lititz, PA 17543

(717) 738-1121