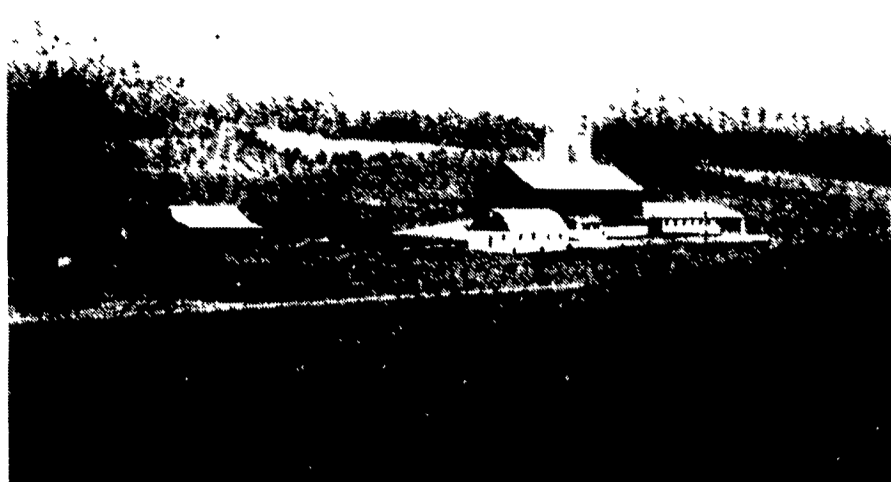


Mifflin County



William and Michael Ammon are father and son partners in this Dairy of Distinction farm located near Lewistown. They farm 300 acres on two farms and have 70 cows and 75 helpers and calves. The herd average is over 20,000 lbs. of milk. Michael is the fifth generation of Ammons on the farm and he has two sisters, Ellen, a freshman at Lancaster Bible College and Cristine, in high school.



The top herd in Mifflin County last year was the registered Holstein herd of Russell and Debra Kline located near McVeytown. The 100 head of dairy cows and young stock are identified by the prefix, Vern-Lee and produce over 23,000 lbs of milk and 900 lbs of butterfat. The Kline family moved from Lancaster County in 1984.



LaRue and Faylene Maurer, have a milking herd of 45 Holsteins (mostly registered) and 30 helpers and calves. They have owned the farm since 1973 and have combined their names to form their prefix, La-Fay Farm. The most recent herd average was 19,446 lbs. of milk and 711 lbs. of butterfat. The farm is located near Lewistown in Mifflin Co.

Congratulations ADC Members

Atlantic Dairy Cooperative congratulates all members awarded the 1990 Dairy of Distinction Award. We are proud of your efforts in maintaining a high quality farm appearance. We are equally proud of your commitment to promoting the wholesomeness of your milk products.

William K. & Michael W.
Ammon, Ammon Farms,
Lewistown, Pa.

Dalton & Vickie Biehl,
Kutztown, Pa.

Delaware Valley College,
Doylestown, Pa.

Lynn Eberly, Mt. Pleasant
Farm, Fayetteville, Pa.

Robert & Rhodena Eckelme,
Mercersburg, Pa.

Dale R. Hershey, Gap, Pa.

John & Bonnie Hess,
Gettysburg, Pa.

Junge Farms Inc.,
New Tripoli, Pa.

Noah N. Martin,
Kirkwood, Pa.

Terry & Rebecca Mauser,
Terlin Farms,
Elizabethville, Pa.

Byron & Delma Over,
Martinsburg, Pa.

William, Anna Mae & Kevin
Peoples, Will-Mae Acres,
Mifflintown, Pa.

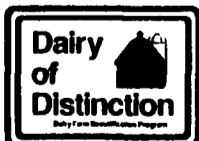
M. Thomas Sheaffer,
Carlisle, Pa.

John F. Stamy III,
Mechanicsville, Pa.

Gary Stoltzfus,
Elverson, Pa.

Franklin Atkinson, Jr.
Bridgeton, N.J.

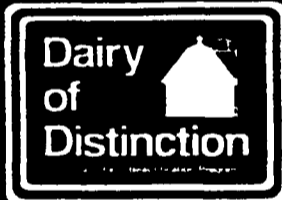
Paul Bryan, Trenton, N.J.



Atlantic Dairy Cooperative

1225 Industrial Highway, Southampton, Pa. 18966

(800) 888-MILK



Congratulations Dairy Of Distinction Award Winners!

NEW VOLUMASTER® SILAGE DISTRIBUTOR UNLOADER

A
Rainbow
Of
Features



The Volumaster® silage distributor/unloader offers all the best performance features in one machine. Only the Volumaster® system uniformly packs more silage in and gets it out faster than ever. Plus all components are easy-to-get-at for convenient service, and are designed to last longer with less maintenance.



LAPP'S BARN EQUIPMENT

5935 OLD PHILADELPHIA PIKE, GAP, PA 17527

PHONE: 717-442-8134 • FAX 717-442-3112
SALES & SERVICE