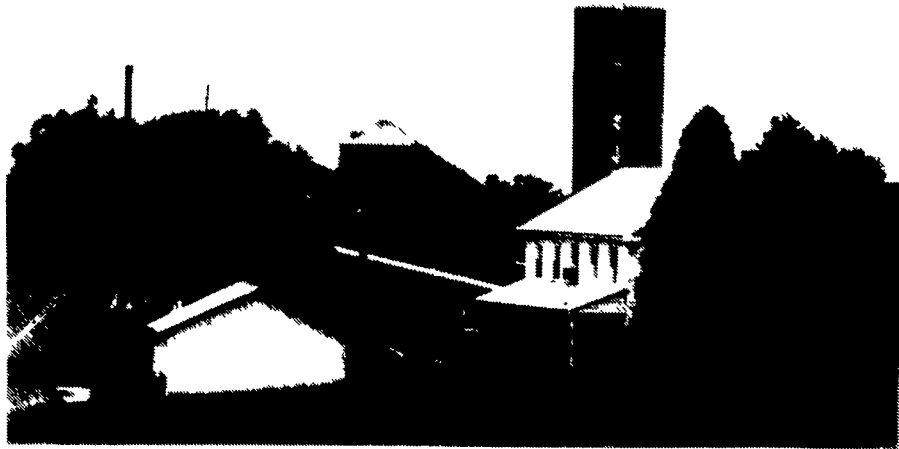


Juniata County



Charles and Ruby Wochley, Mt. Pleasant Mills, farm three farms for a total of 420 acres. They have 60 Holstein milk cows and raise all their calves--the heifers for replacement in the milking herd and the bulls for steer beef. Charles was a boy when his father bought the farm 45 years ago. The Wochleys have three married daughters, Colleen Ritter, Jeanett Kauffman and Diann Sheaffer.

Lawrence County



Lawrence-Haven Holsteins are behind this Dairy of Distinction located near New Castle. Owned by Paul and Penny Lawrence, the 60 milk cows produce over 18,000 lbs. of milk and are housed in a new barn. A fire destroyed the old barn last spring. The farm has been the family for 15 years and they sell jug raw milk at the farm. Since they are the only farm family in their school district, they have many opportunities to host school children on visits to their farm. They try to do their part to promote dairy products right at home. Paul and Penny have five children, Matthew, 14; Jess, 12; Greg, 9; Mark, 5; Eric 3, and Amy 1.

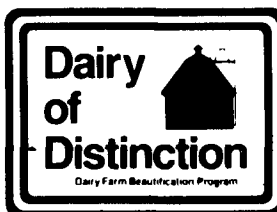
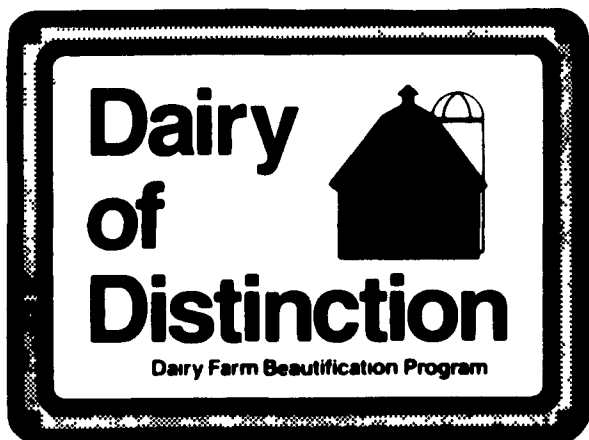


Lawrence County

Dave and Dewayne McConnell operate this 300-acre dairy farm in Volant, Pennsylvania, which includes 52 head of Holstein and 50 young stock. Although the farm is not on DHIA, approximate herd average is 15,500 to 16,000 pounds. They operate milking tie stalls, have added three stalls and an additional 45 freestalls. The farm has been in the family about 40 years and is operated by Dave, Dewayne, and father Richard, in addition to Dave's wife Virginia and daughters Danielle, 10 and Valerie, 8. Virginia said that not enough credit goes to Dave, who, despite having multiple sclerosis, continues to farm "because farming is in his blood," she said.

**PIONEER HI-BRED
CONGRATULATES**

**THE PENNSYLVANIA
DAIRY OF DISTINCTION
AWARD WINNERS**



**Congratulations
Award Winners!**

Since 1944, we have provided
distinctive genetics
through professional service
at affordable prices.

We are proud to be an important part
of today's herd improvement programs
for dairymen striving toward a more
profitable future.



headquarters: 1575 Apollo Drive
Lancaster, PA 17601

Visitors always welcome; stop and see us at Ag Progress Days.

24-hour toll-free phones:
Long Distance — 800/444-6456
Lancaster local — 569-0411